

POTATO LAKE HOME • 150' LAKESHORE • 6+ ACRE WOODED LOT • 220' LAKESHORE

**PARK RAPIDS
MINNESOTA
REAL ESTATE**

AUCTION

**Another
Jokela
Auction**

Park Rapids, MN, take State Hwy 34 West 3 miles to 109th Ave, go North 1/4 mile to farm auction site.

Saturday, September 7, 2019

AUCTION STARTS AT 10:00AM

LUNCH AVAILABLE



Note: To settle the Estate of Oscar & Phyllis Vaadeland, we will sell the following personal property and Potato Lake Real Estate. Everyone knew Oscar as he was a former 4th grade teacher at the Osage Elementary School for many years. He had a wonderful personality and loved to visit with everyone! Don't miss this auction, something for everyone or just come to visit with the Vaadeland Family!

Real Estate sold Online visit JokelaAuction.com
Online bidding Sept 7th - Sept 17th. Visit our website for details



Potato Lake wooded lot on Gazelle Trail, 6.28 acres, 220' lake frontage, beautiful building site with absolutely gorgeous views from the highest point in this area of Potato Lake! There is also a back lot for a pole building 1/12 Interest in Common Lot, Tract 4. Parcel ID 02.26.00621.

Broker Participation invited

For questions, call Jokela Auctions or David L. Veo Realty 218-280-9796

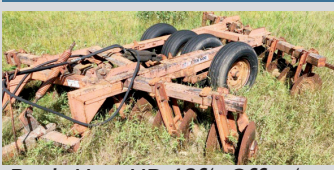
Real Estate Terms & Conditions: \$10,000.00 down payment day of auction for each parcel. The successful bidder shall enter into a non-contingent "As Is" purchase agreement on the day of auction prepared by David L. Veo Realty, Broker and pay non-revocable down payment to be held in escrow. The balance will be due at closing, approximately 45 days. The seller will furnish marketable title to said property. The Real Estate will be considered sold when all parties have signed the purchase agreement. Bidding increases will be in such increments at the sole discretion of the auctioneer. Property is not subject to prior sale and is sold "As-Is with All Faults". All announcements made by the auctioneer take precedence over any previous advertising or oral statements. Jokela Auction Co. and David L. Veo Realty represent the seller in this transaction. Square footage dimensions and acreage amounts are based upon information provided by the seller and are believed to be correct; however, purchaser shall bear the responsibility to confirm all calculations prior to the auction. All information contained in this brochure was derived from sources believed to be correct but is not guaranteed. Jokela Auction Co. & David L. Veo Realty are not responsible for errors or omissions. Buyer's Premium: A 5% Buyers Premium will be added over and above the high bid. This will equal the contract price.

JD & OTHER TRACTORS

John Deere 4430 Tractor, w/cab, dual hyd, PS, 3Pt. (diesel), reads 1,413 hrs), exc rubber;
John Deere 3020 Tractor, 3Pt. (gas, reads 7,157 hrs, like new rear rubber;
John Deere 3010 Tractor, 3Pt. (gas, WF, reads 5,406 hrs)
John Deere "Utility 850" Tractor, 3Pt., turf rubber (diesel), reads 2,517 hrs);
Ford 600 Tractor, 3 Pt., Live power w/Hyd Loader, bucket;
International Super A Gas Tractor w/mounted belly sickle mower;
Allis Chalmers WD Tractor (for parts), other parts tractors;



MACHINERY



Bush Hog HD 10ft. Offset Brush Disc, hyd lift, dual rubber;
John Deere 14ft. tandem disc, hydraulic lift;
John Deere Model 1219, 9' Haybine;
John Deere 9-wheel, wide, side delivery Rake w/hydraulic lift;
Massey Ferguson 410 Combine with 17ft. Straight Combine Header, stored inside;
International Harvester 6-wheel Side Delivery Rake;
John Deere 8' Pull Type Cultivator;
International 4000 Swather;
Melroe Harrow 25ft.;
MN 6T. Farm Wagon, 8x16 rack w/lift;



International Harvester HD 16' tandem disc, dual rubber, hydraulic lift;
Pull Type Sickle Mower;
(2) Roto-packers, 5', pull-type;
(2) Farm wagons with flare boxes;
JD Manure Spreader;
(2) Dump Rakes;
MM Grain Drill;
Field Cultivator;
Windrowers;
Vintage Road Grader 8ft on steel, (Township model);
JD 3-Bottom Plow on rubber & others;
Vintage Machinery (discs, drags, plows, 10' & 11' John Deere grain drills);
Much more!

BOATS • CAMPER • SPORTS



Weeres 20' Pontoon w/Yamaha 25HP OB motor, elec start, tandem trailer (approx. only 50 hrs);
Shoremaster Model 40120

Aluminum Pontoon lift, 4000# cap. with 27'x10' alum framework w/12' support boards & canopy, needs fabric;
Lund "Pike 16" Aluminum Fishing Boat with steering console, Evinrude 35HP long shaft OB motor, Minnkota trolling motor, Eagle fish locator & ShoreLand'r trailer, excellent pkg;
Hewitt Aluminum Boat Lift w/18' alum canopy frame, needs fabric;

2006 Forest River 30ft. Camper, tandem axle w/range, frig, bathroom, gas furnace, Queen bed, sleeps 4, barely used!

HD Boat Trailer; (2) Steel Jet Ski Lifts; Paddleboat; Arctic Cat "ZR 500" Snowmobile, 3764 mi, good; Arctic Cat Eltigr 5000 Snowmobile, vintage; Snow Jet "440 SS" Snowmobile, vintage; 6x8' Tilt Bed Snowmobile Trailer Ice House; 8'x38' Snowmobile Trailer; 2007 Polaris Sportsman 450 ATV; Kawasaki 400 4x4 ATV w/racks & winch; Honda 125 3-Wheeler ATV; Bulldog snowmobile jack, 800# cap; Otter II Ice Fishing Sled (4 1/2'); Pair of Oars;

SKIDSTEER LOADER

Melroe Bobcat "642" gas with material bucket,, 3313 hrs;



FARM

10-Ton Trailer; (2) HD 6T Jack Stands; (2) Handy Man Jacks; Railroad Track 4ft; (10) Pig Farrowing Crates; Baler Twine; Cattle Panels & Gates; Ground leveler, approx. 9'; Fencing Supplies (wire, posts, insulators); (10) Chisel Plow Teeth 16"; Horse Tack, Harnesses, Bridles, Halters, Collars; Vintage Platform Scale; (2) old MN Farm Trailers; Engine Lift on wheels w/ball hitch; Pickup box trailer;

MISCELLANEOUS

Asst. Rough Cut Lumber Building Lumber
Fully & partially carved & cut Wooden Décor & Toys;
Outdoor Nativity (stable w/lighted figures);
Christmas Décor (indr & outdr); (12) Metal Shed Panels (12');
6 Large Freezers Full of Scrap Steel (on blocks);
A lot of Other Scrap Iron;

PICKUPS

2001 Chevy S10 Pickup, automatic, extended cab, needs engine;
1995 Chevy S-10 Pickup, automatic, runs (needs trans or front-end work);
1965 International Step-side Pickup, needs restoration, no title at this time;

LAWN AND GARDEN

John Deere X520 garden tractor w/mower, bagger, snowblower, 133 hrs (mower was never used); (2) John Deere LX 178 Garden Tractors; John Deere 210 Garden Tractor; Yard Machines Walk Behind Snowblower (21", 123 CC); Utility Trailers; John Deere wagon; Wards 5HP Garden Tiller; Craftsman 5HP Wood Chippers-shredders (like new); Gas 31cc Hand Tiller; AC Lawn mower; 4ft pull behind garden packer; Jonsered 21" Chainsaw; Home Lite 12" Elec Chain Saw; (2) Poulan 20" Chain Saws; Garden Tiller; AgriFab Leaf Picker (pull behind); Ariens 6HP Walk Behind Weed Whip; Leaf Blower; Outdoor Nativity (stable w/lighted figures); B&D 16" Hedge Trimmer (new in box); Truper wheelbarrow, like new, 3 others; Lawn Furniture; Fire Pit Ring; Planters & Pots; Dog House & Kennel (10 x10); Hand Tools (rakes, shovels, pot picker, hoes, etc)

SHOP/TOOLS

Forest King 22T. Log Splitter (never used); Craftsman Port Generator (1.1 HP, 150 PSI, 17-gal); Homelite 3500w Generator; Briggs & Stratton 5500w Generator; Sanborn Magna Force 1HP Air Compressor; Elec & Antique Wood Splitters; Wood Furnace (never used); DeWalt Wood Planer;

ESTATE OF OSCAR & PHYLLIS VAADELAND

Personal Reps, Keith Mikus, 218-252-1444, Tom Swenson, 218-849-3246



David L. Veo
Sold Over
9000 Auctions
In 9 States



Jolene Jokela-Veo
2008 MN State
Champion
Auctioneer

E. Randy Jokela 03-10 • Jolene Jokela-Veo 03-29 • David L. Veo 03-45 • Licensed & Bonded Auctioneers
218-538-6508 • 218-280-9797 • email: Sold@JokelaAuction.com
Northern Minnesota's Premier Real Estate Auction Company Celebrating 70 Years in the Auction Industry
56129 County Highway 42 • Park Rapids, MN 56470

FOR MORE PHOTOS & UPCOMING AUCTIONS VISIT JokelaAuction.com

TERMS: No property to be removed unless settled for on day of auction. Bank letter of credit must accompany all personal and company checks, except those issued from local financial institutions. Not responsible for accidents. All guarantees are between buyer and seller. All items are sold as is, where is. While descriptions are believed correct, the Auction Company makes no guarantees as to the genuineness, authenticity or defect of any item and will not be held responsible for advertising discrepancy or inaccuracies. The auctioneer has the sole discretion of selling auxiliary components as a unit or separate. Buyer is responsible for any items immediately after making bidding purchase. Sales tax if applicable, no buyers premium.