



LIQUIDATION

**LOCOMOTIVE CRANES, REVOLVER PORTAL CRANES,
METAL BUILDINGS FOR REMOVAL, RAIL-MOUNTED FABRIC BUILDINGS
AVAILABLE FOR SALE BY PRIVATE TREATY**

Surplus to the Needs of Inland Marine Equipment, Jeffersonville, Indiana



**Additional information is available at www.pmi-auction.com.
For inspection information, availability and pricing
contact Bud Moore at 1-314-780-2189**



AVAILABLE IMMEDIATELY!

Read Partial Terms and Conditions on Back Page of Brochure

Sale Conducted By:

PLANT & MACHINERY INC.

AUCTIONEERS • APPRAISERS • LIQUIDATORS • REAL ESTATE

HOUSTON • DALLAS • ST. LOUIS

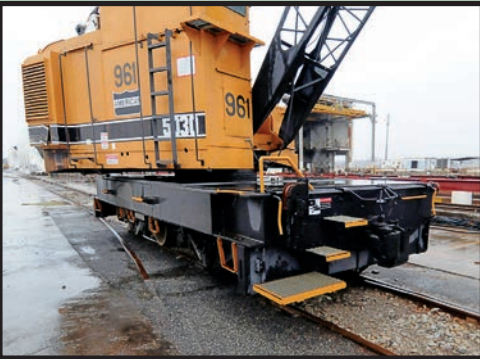
E-MAIL: pmi@pmi-auction.com • WEBSITE: www.pmi-auction.com

Headquarters:

**1304 Langham Creek Drive, Suite 454
Houston, Texas 77084**

PHONE: (713) 691-4401

FAX: (713) 672-7905



LOCOMOTIVE CRANES

(9) AMERICAN MDL 5030 DIESEL-ELECTRIC: (as new as 2005) 60,000-lb. rated cap., 60' lattice boom w/9' jib, block and ball arrangement, 56-1/2" rail gauge, traction motor drive, Cummins N-855 diesel engine, elevated temperature controlled cab.

Crane #7, S/N CR-5267, Factory Remanufactured in 2005

Crane #5, S/N CR-5268-2, Factory Remanufactured in 2005

Crane #93, S/N CR-5222, New 1993

Crane #19, S/N L-4297, New 1981

Crane #18, S/N L-4296, New 1981

Crane #96, S/N L-4252, New 1980, Factory Remanufactured in 1996

Crane #17, S/N L-4272, New 1980

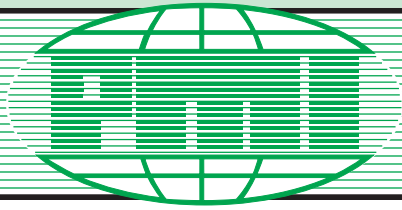
Crane #961, S/N L-4199, New 1978, Factory Remanufactured in 1996

Crane #962, S/N L-4113, New 1976, Factory Remanufactured in 1996

These cranes have been well-maintained and are available for inspection under power at your convenience. A large host of new, refurbished, and used component parts are available at additional cost. Detailed specification sheets are available for viewing on our website at: www.pmi-auction.com

Detailed specification sheets are available for viewing on our website at www.pmi-auction.com





LIQUIDATION

LOCOMOTIVE CRANES, REVOLVER PORTAL CRANES, METAL BUILDINGS FOR REMOVAL, RAIL-MOUNTED FABRIC BUILDINGS **AVAILABLE FOR SALE BY PRIVATE TREATY**

Surplus to the Needs of Inland Marine Equipment, Jeffersonville, Indiana



REVOLVER PORTAL CRANES

(2) CLYDE MDL. 24-E-140-10: 109,000-lb. rated cap. @ 40' radius, 140' boom length, 15' fly jib, self-propelled, 480 v. electric operation, 25' rail gauge, approx. 30' under traveling frame.

Crane #23, S/N CW-3816, New 1960, Extensive Reconditioning in 2014

Crane #1, S/N CW-3821, New 1961

CLYDE MDL. 20-DE-125-20: 109,000-lb. rated cap. @ 40' radius, 125' boom length, 15' fly jib, self-propelled, 480 v. electric operation, 25' rail gauge, approx. 30' under traveling frame, S/N CW-3964, new 1971, Crane #95

AMERICAN MDL. 203: 120,000-lb. cap., 140' boom length, 6' fly jib, self-propelled, 408 v. electric operation, 25' rail gauge, approx. 30' under traveling frame, S/N R1119, new 1970, extensive reconditioning 2014, Crane #80



These cranes have been well-maintained and are available for inspection under power at your convenience. A large host of new, refurbished, and used component parts are available at additional cost. Detailed specification sheets are available for viewing on our website at: www.pmi-auction.com

Detailed specification sheets are available for viewing on our website at www.pmi-auction.com

PLUS: CRANE PARTS INVENTORY



2006

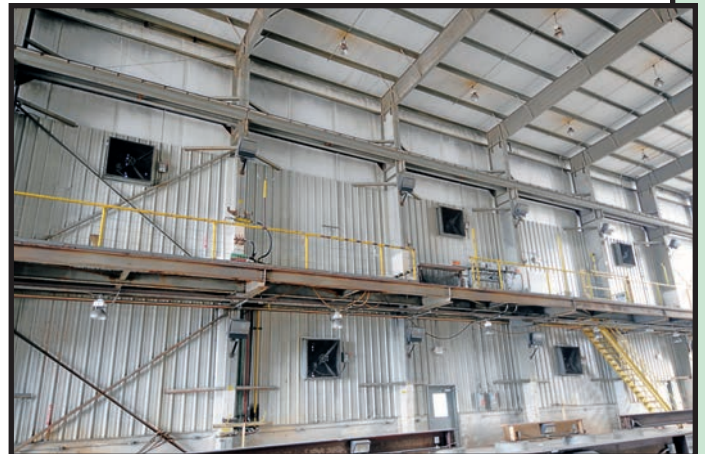


METAL BUILDINGS FOR REMOVAL

(2) USA STRUCTURES:
58'W. x 222'L. x 46'H. clear span, (new 2006), 12,876 sq. ft. per building.

Building 1: Open ends, fully insulated, ventilation, lighting and electricals, metal roof, 11' wide full-length mezzanine set on each side at 16'-7" ht., 34'-3" to top of crane beam, various man doors and side roll-up doors.

Building 2: used as a paint building, columns arranged for cranes, (2) full width/ht. roll-up metal doors, fully insulated, ventilation, lighting and electricals, metal roof, 11' wide full-length mezzanine set on each side at 16'-7" ht., 34'-3" to top of crane beam, various man doors and side roll-up doors.



2015



RAIL-MOUNTED FABRIC BUILDINGS

(2) BIG TOP STRUCTURES: 70'W. x 308'L. x 51'H., clear span, (new 2015), 21,560 sq. ft., 37' side wall ht., 30" heavy-wall galvanized steel-chord trusses, 18-oz. translucent flame-retardant fabric cover, (56) wheels and keepers for structure movement on rails, fully insulated.



LOCOMOTIVE CRANES, REVOLVER PORTAL CRANES, METAL BUILDINGS FOR REMOVAL, RAIL-MOUNTED FABRIC BUILDINGS AVAILABLE FOR SALE BY PRIVATE TREATY

Surplus to the Needs of Inland Marine Equipment, Jeffersonville, Indiana

**Additional information is available at www.pmi-auction.com.
For inspection information, availability and pricing
contact Bud Moore at 1-314-780-2189**

PLANT & MACHINERY INC.

AUCTIONEERS • APPRAISERS • LIQUIDATORS • REAL ESTATE

P.O. Box 218568
Houston, TX 77218-8568

DATED MATERIAL – PLEASE DELIVER



**ATTENTION: PLANT MANAGER
OR EQUIPMENT BUYER**



Presorted
First Class Mail
U.S. Postage
PAID
Eugene, Oregon
Permit No. 17

**LOCOMOTIVE CRANES,
REVOLVER PORTAL CRANES,
METAL BUILDINGS FOR
REMOVAL, RAIL-MOUNTED
FABRIC BUILDINGS**

**AVAILABLE FOR SALE
BY PRIVATE TREATY**

Surplus to the needs of Inland Marine
Equipment, Jeffersonville, Indiana



PARTIAL TERMS & CONDITIONS

Plant & Machinery, Inc. (PMI) is acting as sales agent for the Seller. All equipment is offered subject to prior sale. All items are sold "AS IS, WHERE IS, WITH ALL FAULTS", WITH NO EXPRESS OR IMPLIED WARRANTIES, whether with respect to FITNESS OF PURPOSE, MERCHANTABILITY, OR OTHERWISE. Although all information has been obtained from sources deemed reliable, neither PMI, as sales agent, nor the Seller, shall be liable for any errors or for the correctness of the descriptions. The contents of this brochure, together with any similar information supplied to potential buyers either orally or in writing by the employees or agents of PMI or Seller, are to be considered a guide only and in every instance subject to confirmation by potential buyers based upon their own inspection of the items for sale.

(10) UPCOMING AUCTIONS & SALES

**BIDS START CLOSING:
WEDNESDAY, MARCH 27
10:00 A.M.**

**MULTI-LOCATION
TIMED ONLINE ONLY**

CNC MACHINE TOOLS • FAB. & TEST EQUIP.
HEAT TREAT • FORKLIFTS • AEROSOL FILLING • MORE!

**TUESDAY, APRIL 2 • 10:00 A.M.
APPLIED MACHINERY CORP.**

6545 North Eldridge, Houston, TX 77041
CNC MACHINE TOOLS • FAB EQUIP.
FORKLIFTS • OILFIELD EQUIP.

**BID OPENING:
TUESDAY, APRIL 16
SEALED BID SALE**

UNUSED THERMATOOL (INDUCTOTHERM)
PIPE MFG. INDUCTION HARDENING & TEMPERING LINE

AUCTIONEER: Ron Moore, TX Lic. # 7314

**WEDNESDAY, APRIL 3
10:00 A.M.**

APPLIED MACHINERY CORP.

7605 Wright Rd., Houston, TX 77041
CNC & MANUAL FAB. EQUIP. • WELDERS
CRANES • FORKLIFTS

**THURSDAY, APRIL 4
10:00 A.M.**

APPLIED MACHINERY CORP.

14737 Firetower Rd., Conroe, TX 77306
FAB. EQUIP. • DRILLING RIG • CRANE
FORKLIFTS • MORE!

**WEDNESDAY, APRIL 24
10:00 A.M.**

SCHILL STEEL SERVICES

3001 W. 11th, Houston, TX 77008
(5) PLASMA & OXY CUTTING SYSTEMS
FAB. EQUIP. • MACHINE TOOLS • OVERHEAD
CRANES • FORKLIFTS • MORE!

**THURSDAY, APRIL 25 • 10:00 A.M.
CHALLENGE MACHINE & FAB.**

6460 Aldine Bender Rd., Humble, TX 77396
PRECISION MACHINE SHOP & FAB. FACILITY CLOSING!

TUESDAY, APRIL 30 • 10:00 A.M.

Surplus to the Ongoing Operations of

**SALAMANDER ADVANCED
HEATER SOLUTIONS**

5521 Gasmer St., Houston, TX 77035
OILWELL DOWNHOLE DRILLING SUPPORT EQUIP. • TUBE
WELDERS & FURNACES • ELECTRICAL SWITCH GEAR •
GENERATORS & MORE!

**THURSDAY, MAY 2 • 10:00 A.M.
CHICKASHA MANUFACTURING**

5501 Hwy. 81 South, Chickasha, OK 73018
CNC & MANUAL MACHINE TOOLS • FABRICATING EQUIP.

**THURSDAY, MAY 16 • 10:00 A.M.
CHAPARRAL MANUFACTURING CO.**

311 Hwy. 69 South, Trenton, TX 75490
PRECISION CNC MACHINE SHOP CLOSING!

DOWNLOAD BROCHURES at www.pmi-auction.com