



# AUCTIONS

**3 DAYS • 1 LOCATION • ELMORE CITY, OKLAHOMA**

Surplus to the Ongoing Operations of  
**FORUM ENERGY TECHNOLOGIES**

**22568 HIGHWAY 29  
ELMORE CITY, OKLAHOMA 73433**

*(See Directions on Back Page)*

**AUCTION: MAY 22, 23, 24 • 10:00 A.M.**

**PPE REQUIRED FOR ESCORTED INSPECTION**

Monday, May 21, 9:00 A.M. to 4:00 P.M. All inspecting parties will be required to bring PPE (hardhat, safety shoes, safety glasses, ear protection). All inspecting parties will sign in at the guard shack and wait for an escort. Prior inspection by appointment only, call (713) 691-4401.

**BUYER'S PREMIUM:**

**15% ON-SITE  
18% WEBCAST**

**2011**



IMCAR TANK FABRICATION SYSTEM

**2013**



MANITOU 26,400-LB. CAP. TELEHANDLER

**DJ TRAILERS TANDEM AXLE TANK HAULING TRAILERS**



**17  
AVAILABLE**

**DAY 1: MAY 22-ON-SITE  
& WEBCAST AUCTION**

**HIGH-VOLUME STORAGE TANK  
MANUFACTURING FACILITY:**

Featuring: (2) Imcar Vertical Systems for Tank Production as New as 2011; Imcar 4-Roll CNC Plate Roll; Upenders; Air Compressors; (34) Miller Welders; Welding Positioners; (35) Tank Hauling Trailers, Step Deck & Gooseneck Trailers, Manitou Telehandler Lift, & Much More!



IMCAR 10' X 5/8" 4-ROLL HYD. PLATE ROLLING MACHINE

**2011**

**DAY  
2 & 3**

**MAY 23 & 24-ONLINE TIMED AUCTION OF INVENTORY**

**FEATURING: HUGE \$5,000,000.00 PLUS INVENTORY OF TANK COMPONENTS, FINISHED TANKS, SEPARATORS, PIPE FLANGES, ELLIPTICAL & HEMISPHERICAL TANK HEADS, BLIND FLANGES, THIEF HATCHES, & OTHER DRILL SITE COMPONENTS!**



**On-Site Bidding in Elmore City, OK or Bid Via Webcast at [BidSpotter.com](http://BidSpotter.com)**

Read Partial Terms & Conditions on  
Back Page of Brochure

*Sale Conducted By:*

**PLANT & MACHINERY INC.**  
AUCTIONEERS • APPRAISERS • LIQUIDATORS • REAL ESTATE

**HOUSTON • DALLAS • ST. LOUIS**

**Headquarters:**  
**1304 Langham Creek Drive, Suite 454**  
**Houston, Texas 77084**

**PHONE: (713) 691-4401**

**FAX: (713) 672-7905**

**E-MAIL: [pmi@pmi-auction.com](mailto:pmi@pmi-auction.com)**  
**WEBSITE: [www.pmi-auction.com](http://www.pmi-auction.com)**

2011



IMCAR TANK FABRICATION SYSTEM

## VERTICAL TANK FABRICATION SYSTEMS

**IMCAR**, new 2011, consisting of: Imcar Mdl. Decoil 25 vert. coil reel, 50,000-lb. cap., 78" max. coil width, hyd. hold-down, interchangeable mandrels, S/N B4332, Imcar Mdl. TSIHV2000 vert. bending roll, 78.7" max. bending length, S/N B4333, Imcar vert. plasma cutting station, S/N B4334, Imcar seam welding station w/Miller Axxess 450 MIG welding system, S/N B4335, adj. dia. pwr. ring rolling unit w/idler rolls. **(SEE THIS MACHINE UNDER POWER ON MONDAY, MAY 21 FROM 1:00 TO 3:00 P.M.)**

**IMCAR**, new 2007, consisting of: Imcar Mdl. Decoil 25 vert. coil reel, 50,000-lb. cap., 78" max. coil width, hyd. hold-down, interchangeable mandrels, S/N B3896, Imcar Mdl. TSIHV2000 vert. bending roll, 78.7" max. bending length, S/N B3898, Imcar vert. plasma cutting station, S/N B3899, Imcar seam welding station w/Miller Axxess 450 MIG welding system, S/N B3893, adj. dia. pwr. ring rolling unit w/ idler rolls. **(SEE THIS MACHINE UNDER POWER ON MONDAY, MAY 21 FROM 1:00 TO 3:00 P.M.)**

**IMCAR**, new 2007, bending station, 78" bending rolls, integrated decoiler, ring roller raceway, plasma cut-off station, MIG welding station, (Note: This unit is currently out of service and has been used for parts).

## GIRTH SEAM WELDING SYSTEMS

**(3) IMCAR**, new 2007, 12' and 15.5' fixture rings, hyd. driven rotation, self-contained hyd. system and controls, internal and external adj. ht. welding stands, S/N B3901, S/N B3902, S/N B3903.



HEAVY COIL LIFTERS

## COIL UPENDER

**CALDWELL MDL. 88-30-72, 30 T. CAP.**, new 2012, 72" max. coil width, 72" max. coil dia., V-block option.

## COIL LIFTERS

**LETELLIER 60,000-LB. CAP.**, new 2008, adj. width up to 60", S/N 103116-DALC6072.

**PEERLESS 50,000-LB. CAP.**, new 2011, adj. width up to 60", S/N 222945.

2011



## 4-ROLL HYDRAULIC PLATE BENDING ROLL

**IMCAR 10' x 5/8" MDL. 4RH20/5**, new 2011, 13' top roll dia., 11.8" pinch roll dia., 9.5" lateral roll dia., cone rolling cycles, Siemens Simatic PLC control, S/N B4257.

2012



48" CAP.

## 4-AXIS CNC PIPE CUTTING MACHINE

**WATTS SPECIALITY MDL. W484**, new 2012, CNC control programming station, 6"-48" nominal cap., 20' max. cutting length, 40,000-lb. load cap., manual programming station, Hypertherm high performance HRP400XD plasma pwr. supply w/Power Pierce Technology, Hypertherm chiller, 20' infeed conveyor and 20' off-loading conveyor w/hyd. kick-off arms, 20' pwr. exit conveyor, adapter rollers for 3"-6" pipe, oxy/fuel cutting head, S/N 1147. **(SEE THIS MACHINE UNDER POWER ON MONDAY, MAY 21 FROM 1:00 TO 3:00 P.M.)**

2011



CALDWELL 30 T. CAP. COIL UPENDER





**BUG-O (CYPRESS)  
CIRCULAR  
WELDING MACHINE**

**2015  
UNUSED**



**WELDIRE 20,000-LB. CAP.  
WELDING ROTARY TABLE**

**LPI PNEUMATIC  
PAINT LIFT UNIT**



**ECOPURE  
SOLVENT STILL**

**2014**

## PPE REQUIRED FOR ESCORTED INSPECTION

Monday, May 21, 9:00 A.M. to 4:00 P.M. All inspecting parties will be required to bring PPE (hardhat, safety shoes, safety glasses, ear protection). All inspecting parties will sign in at the guard shack and wait for an escort. Prior inspection by appointment only, call (713) 691-4401.

**DAY 1 ESCORTED INSPECTION:** Monday, May 21, 9:00 A.M. to 4:00 P.M. & Morning of Sale

**On-Site Bidding in Elmore City, Oklahoma  
or Bid Via Webcast at [BidSpotter.com](http://BidSpotter.com)**

**DAY 1 ON-SITE  
& WEBCAST  
AUCTION:  
TUESDAY,  
MAY 22  
10:00 A.M.**

Surplus to the Ongoing  
Operations of  
**FORUM ENERGY  
TECHNOLOGIES**  
22568 HIGHWAY 29  
ELMORE CITY,  
OKLAHOMA 73433  
(See Directions on Back Page)

## PROGRAMMABLE CIRCULAR WELDING MACHINE

**BUG-O (CYPRESS) MDL. CW0-1700**, new 2015, 6"-24" weld dia., 60-lb. max. wire spool, .2-2.2 RPM, 500 AMP rated w/lathe chuck and expandable chuck, MIG welding torch, S/N 61115107001-B (unused condition).

## WELDING MANIPULATOR

**CUSTOM APPROX. 6 X 6**, spider base, rotating column, no welding equipment.

## WELDING TURNTABLES

**WELDIRE 20,000-LB. CAP. MDL. WFT20 WELDING TURNTABLE**, 60" dia. table w/control pendant, S/N 1086459.

**(2) IMCAR MDL. R18 WELDING TURNTABLES**, new 2011, 59" dia. rotating tbl., 4" center hole, heavy fabricated steel base, S/N B4276, S/N B4277.

## COLUMN MOUNTED JIB CRANES

**(4) ABELL HOWE 3 T. CAP. X 18' REACH**, Harrington 3 T. elec. chain hoist, pendant control.

## AUTOMATED CRANE HOOKS

**ELEBIA MDL. E10**, 10,000 kg, pwr. supply, charger, integrated CCD camera, remote control, S/N 10202; **ELEBIA MDL. E5**, 5,000 kg, pwr. supply, charger, S/N 06266 and S/N 06267 w/integrated CCD camera and remote control, S/N 06268 no camera.

## DIGITAL CRANE SCALE

**CASTON III 60,000-LB. CAP.**, new 2012, 20-lb. increments, battery pwr., cradle stand, S/N TH10605931.

## 3-AXIS PAINT LIFT

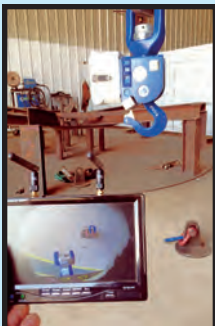
**LPI MDL. LP2-2210LS006564**, new 2016, 600-lb. platform cap., 22' max. platform ht., 114" platform extension, variable travel spd. to 470 IPM, all pneu. operation, including installation rails, S/N 4632.

## SOLVENT STILL

**ECOPURE MDL. SR60**, new 2014, 240 v., singl. phase, 60 liter boiler cap., 22 liter thermic oil cap., S/N T191X20204.

## POWER TURNING ROLL SETS

**CUSTOM APPROX. 15 T. CAP.**, pneu. pwr. drive for use in painting applications, (5) pwr. rollers and (2) idlers, skid mtd., air drive motors and connections.



**VIEW OF ELEBIA  
CRANE HOOK  
W/CAMERA SYSTEM**



**CASTON 60,000-LB. CAP.  
DIGITAL CRANE SCALE**



**PNEUMATIC POWER TURNING ROLLS**



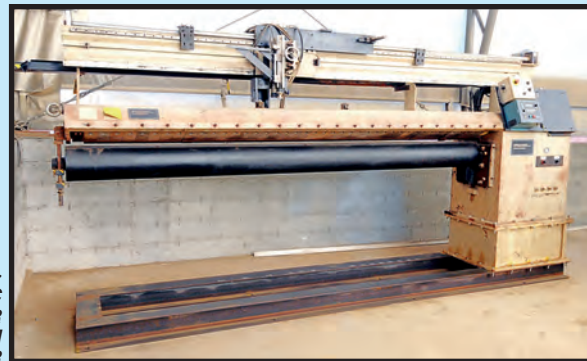
**ELEBIA 10,000 KG  
AND 5,000 KG CAP.  
AUTOMATED CRANE HOOKS**

**4  
AVAILABLE**

**DON'T MISS THESE AUCTIONS**



<  
**RETRO  
SYSTEMS  
MEGA  
HORNET  
CNC  
PLASMA  
SHAPE  
CUTTING  
MACHINE**



>  
**WELDLOGIC  
LINEAR  
SEAM  
WELDER**



**PROFAX WELDING POSITIONERS**

**3  
AVAILABLE**



**MILLER DIMENSION 452 MIG WELDERS**

**11  
AVAILABLE**



**MILLER DIMENSION 652 MIG WELDERS**

**3  
AVAILABLE**



**RIDGID 535 PIPE THREADERS**

**2  
AVAILABLE**

## **GAINESVILLE TEXAS EQUIPMENT**

**Auctioneer's Note:** These items on pages 4 & 5 with Green headings are from the Forum Gainesville, Texas facility and have been recently relocated within the Elmore City location for disposition.

### **CNC SHAPE CUTTING MACHINES**

**RETRO SYSTEMS MEGA HORNET 12' X 40' MDL. MGH120-LBR5D**, new 2008, Hypertherm touchscreen CNC control system, Hypertherm Hi-Performance plasma HPR260HD pwr. supply, plasma contour bevel head, slave carriage w/(3) oxy. fuel heads arranged for beveling, water tbl. w/integrated rails, S/N 2153.

**RETRO SYSTEMS ULTRA HORNET 8' X 20' MDL. UH96-EP5D82906**, new 2006, Hypertherm CNC control, plasma cutting head, (2) oxy. fuel torches, Hypertherm Hi-Speed HT2000HLF plasma pwr. supply, water tbl. w/integrated rails, S/N 2074.

### **LINEAR SEAM WELDER**

**WELDLOGIC**, 10' nominal cap., 11' horn length, currently arranged for approx. 48" max. dia. parts, 15-3/4" riser block, Weldlogic carriage control system, 2-axis slide, no weld equipment currently mtd., S/N 9627.

### **COIL UPENDERS**

**(2) CALDWELL MDL. 88-30-72 30 T. CAP.**, 72" max. coil width, 72" max. coil dia., V-block option, (1) unit is currently inoperable.

### **PIPE THREADERS**

**(2) RIDGID MDL. 535**, 1/8"-2" cap., pipe reamer and cut-off, on roller stand, cutting fluid reservoirs, S/N EBC03514-1010, S/N EBC03517-1010.

### **HORIZONTAL BANDSAW**

**JET 1"**, miter base, blade spds.: 100-350 FPM, 10" rd. cap., 10" x 17" rect. cap., skid base.

### **WELDING POSITIONERS**

**(3) PROFAX MDL. WP1000**, 1,000-lb. cap. vert., 1,750-lb. cap. horiz., 24-1/2" dia. tbl., tilt angle from 0-135 deg., spds.: .2-2 RPM, 15-3/4" dia. 3-jaw universal chuck, S/N WP101889, S/N's N.A.

**ALLOY WELDING SUPPLY 500-LB. CAP. MDL. JOYP500**, manual tilt, variable spd. rotation, 28" dia. platen, S/N 309-606.

### **WELDING MACHINES**

**(3) MILLER MDL. DIMENSION 652 MIG WELDING MACHINES**, 650 amps @ 44 v., 100% duty cycle, 70 Series dual station variable wire feeders.

**(2) MILLER MDL. DIMENSION 452 MIG WELDING MACHINES**, 450 amps @ 38 v., 100% duty cycle, 70 Series dual station variable wire feeders.

**(11) MILLER MDL. DIMENSION 452 MIG WELDING MACHINES**, 450 amps @ 38 v., 100% duty cycle, Miller 22A variable spd. wire feeder.

**(4) MILLER MDL. DELTAWELD 452 MIG WELDING MACHINES**, 450 amps @ 38 v., 100% duty cycle, Miller 22A variable spd. wire.

**(6) MILLER MDL. XMT350 MIG WELDERS**, 350 amps @ 34 v., 60% duty cycle, running gear, (1) w/Miller 70 Series dual station wire feeder, (5) w/Miller 70 Series wire feeder.

**(13) MILLER MDL. DELTAWELD 452 WELDING POWER SUPPLIES.**

### **MISCELLANEOUS WELDING EQUIPMENT**

**(3) MILLER MDL. COOLMATE CHILLER UNITS; (6) MILLER WELDING CARTS; (2) MANIPULATOR POWER COLUMN ROTATION BASES** w/pwr. controls, 48" sq. heavy steel base w/pwr. column rotator and lifting rings.



**DAY 1 ON-SITE & WEBCAST  
AUCTION: TUESDAY,  
MAY 22 • 10:00 A.M.**



< **SULLAIR  
150 HP  
VARIABLE  
SPEED  
ROTARY  
SCREW  
AIR  
COMPRESSOR**

**2008**



**2008/  
2011**

**SULLAIR 100 HP VARIABLE SPEED ROTARY SCREW  
AIR COMPRESSOR**



**VIEW OF CATERPILLAR DIESEL FORKLIFTS**



**VARIABLE SPEED ROTARY SCREW  
AIR COMPRESSORS**

**(2) SULLAIR S-ENERGY MDL. 7509/A**, new 2011 and 2008, 444 ACFM rated output, 100 HP, air cooled, variable spd., S/N 200806260042 (2008), S/N 201102160029 (2011).

**SULLAIR MDL. VCC200S-150HA**, new 2008, 683 ACFM rated output, 150 HP, 135 PSI max. pressure, skid mtd., air cooled, S/N 200803290003.

**REFRIGERATED AIR DRYERS**

**SULLAIR MDL. SRL1400**, new 2008, 1,400 CFM, S/N 3525970001.

**ZEKS MDL. 1200NCFA400**, new 2008, 1,200 CFM, S/N 504983.

**MISCELLANEOUS SHOP  
& WAREHOUSE EQUIPMENT**

**TCI 20 T. CAP. H-FRAME SHOP PRESS; BANDING CART w/tools; 48" CIRCULATOR FAN.**

**FORKLIFTS**

**CATERPILLAR 11,000-LB. CAP. MDL. DP50K-D**, 11,000-lb. cap. @ 24 L.C., 189" lift ht., 96"L. forks, dual cushion tires, side shift, S/N AT28B60372 (currently inoperable).

**CATERPILLAR 7,600-LB. CAP. MDL. DP40K1**, diesel pwr'd., 7,600-lb. cap. @ 24" L.C., 187" lift ht., 96"L. forks, side shift, cushion tires, S/N AT19C01773 (currently inoperable).

**CLARK APPROX. 5,000-LB. CAP.**, diesel, side shift, large dia. cushion tires, S/N N.A.



**2013**

**TELEHANDLER**

**2013 MANITOU MDL. MHT10120**, 26,400-lb. lift cap. @ 24" L/C, 17,600-lb. cap. @ 48" L/C, 31.5' max. lift, crab steering, 175 HP Mercedes diesel engine, 96"L. forks, 98"W. fork carriage, 17.3" ground clearance, 178" turning radius, enclosed temp. controlled cab, 17.5-25 rough terrain tires, 4,041 H.O.M. run time, S/N 763382.

**ROUGH TERRAIN  
CRANE**

**GROVE 28 T. CAP. MDL. RT528C**, new 1996, 70' 3-section boom, 25' swing-away jib, Cummins diesel, Pat Mdl. DS350GW boom monitor, hyd. outriggers, enclosed heated cab, General 20.5-25 24-ply rough terrain tires, 9,163 H.O.M., S/N 82945.

**PPE REQUIRED FOR ESCORTED INSPECTION**

Monday, May 21, 9:00 A.M. to 4:00 P.M.

All inspecting parties will be required to bring PPE (hardhat, safety shoes, safety glasses, ear protection). All inspecting parties will sign in at the guard shack and wait for an escort.

Prior inspection by appointment only, call (713) 691-4401.



AS NEW AS  
2012

DJ TRAILERS TANDEM AXLE  
TANK HAULING TRAILERS

15  
AVAILABLE



XL SPECIALIZED  
MDL. XL-80MDE  
EXTENDABLE  
DOUBLE DROP TRAILER

2  
AVAILABLE

2014



FOINTAINE  
"VELOCITY"  
STEP DECK TRAILER

2  
AVAILABLE

2014

DAY 1

LIVE/WEBCAST AUCTION

AUCTION: TUESDAY, MAY 22 • 10:00 A.M.

DAY 1 ESCORTED INSPECTION: Monday, May 21, 9:00 A.M. to 4:00 P.M. & Morning of Sale

### TANK HAULING TRAILERS

(15) DJ TRAILERS 63' AND 53' TANDEM AXLE, as new as 2012.

(2) SHOP BUILT 60' LOW-BOY TANDEM AXLE, new 2010.

### TRAILERS

(2) 2013-2014 XL SPECIALIZED MDL. XL-80MDE EXTENDABLE DOUBLE DROP, 80,000-lb. overall cap. (closed), full width mech. detachable gooseneck, Extend-A-Trac stretch deck, 29'-50'4" deck size, 48' closed length, 20" deck ht., tandem axle w/Mdl. XL24F flip axle, flip neck option, OK Lic. No. 8094LG, VIN 4U3J04821EL013465, VIN 4U3J04821FL013466.

(2) 2012 XL SPECIALIZED MDL. XL-70MDE EXTENDABLE DOUBLE DROP, 70,000-lb. overall cap. (closed), full width mech. detachable gooseneck, Extend-A-Trac stretch deck, 29'-50'4" deck size, 48' closed length, 20" deck ht., tandem axle w/Mdl. XL24FA flip axle, OK Lic. No. 1017KD, VIN 4U3J04825-DL012415, VIN 4U3S00510DL012640.

(2) 2014 FONTAINE "VELOCITY" STEP DECK, Mdl. HAVSD22TAF 100,000-lb. frame rating, 105,600-lb. G.V.W.R., triple axle, stake pockets, rub rails, landing gear, OK Lic. No. 8767LA, VIN 13N253306F1567559, VIN 13N253302F1567560.

(2) 2012 DORSEY "STEEL GIANT" TRIPLE AXLE DROP DECK, 90,000-lb. G.V.W.R., drop deck, triple axle, stake pockets, rub rails, landing gear, OK Lic. No. 1014KD, VIN 5JYDF5339DE084882, OK Lic. No. 1013KD, VIN 5JYDF-5335DE08488.

2007 FONTAINE 48' "VELOCITY" TANDEM AXLE STEP DECK, landing gear, stake pockets, rub rails, OK Lic. No. 9768JP, VIN 13N24830371544323.

2007 DOONAN 53' TANDEM AXLE STEP DECK, Mdl. 532DB16, 90,000-lb. G.V.W.R., stake pockets, rub rails, landing gear, OK Lic. No. 9769JP, VIN 1D9B-G532871609062.

(3) 2005-2001 TRANSCRAFT 48' TANDEM AXLE STEP DECK, Mdl. DTL2100, 80,000-lb. G.V.W.R., OK Lic. No. 9751JP, VIN 1TTE-4820421068261, new 2001, OK Lic. No. 9752JP, VIN 1TTE4820521068222, new 2002, OK Lic. No. 9747JP, VIN 1TTE4820851075718, new 2005.

2006 DJ TRAILERS 40'L. GOOSENECK, stake pockets, rub rails, tandem axle, landing gear, OK Lic. No. 9748JP, VIN 1D9BU40216W365117.

2008 DJ TRAILERS 25'L. GOOSENECK DOVETAIL, tandem axle, ramps, stake pockets, rub rails, wood deck, landing gear, OK Lic. No. 9755JP, VIN 1D9BU2598W365169.

2007 DJ TRAILERS 20'L. GOOSENECK DOVETAIL, tandem axle, landing gear, stake pockets, rub rails, fold-down ramps, OK Lic. No. 9761JP, VIN 1D9BU25267W365273.

2008 DJ TRAILERS 24'L. X 97"W. FLATBED, tandem axle, wood deck, front pintle hitch, landing gear, OK Lic. No. 9765JP, VIN 1D9VU24298-W365190.

2008 CARGOC 24'L. CARGO, tandem axle, front entry door, full size rear swing door, VIN 4D6EB24278C018537.

### DAY CAB TRACTOR

FORD MDL. 3902, 23,000-lb. rear/12,000-lb. front G.V.W.R., Cummins 6-cyl. turbo diesel engine, 7-spd. trans., snl. axle, sliding 5th wheel, tool-box, Sturdy-Lite headache rack, ODO: 147,000 miles, OK Lic. No. 661642, VIN 1FTYN80E5WVA24806 (currently unlicensed).

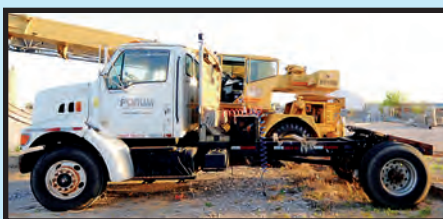
### PICKUP TRUCK

CHEVROLET SILVERADO 2500HD 4X4 CREW CAB, new 06/2006, Duramax diesel engine, 8' bed, VIN 1GCHK23D47F100892, OK Lic. No. V76-121.



XL SPECIALIZED MDL.  
XL-70MDE EXTENDABLE  
DOUBLE DROP TRAILER

2  
AVAILABLE



FORD DAY CAB TRACTOR



CHEVROLET SILVERADO CREW CAB  
4X4 PICKUP

## OFF-SITE ITEMS LOCATED IN GUTHRIE, OK

Please Inspect at Forum Plant,  
3110 W Noble Ave., Guthrie, OK 73044

To be sold by photo in Elmore City on May 22

2006 40' LEGEND GOOSENECK TRAILER, Tag 9522EV, VIN 5D3BG402X6E102687. (Sold by photo Guthrie, OK)

2000 30' ROAD BOSS GOOSENECK TRAILER, Tag 6477DM, VIN 5C3HH3023Y1001371. (Sold by photo Guthrie, OK)

2006 FORD F-250 FLATBED TRUCK, Tag 45095Y, VIN 1FTSX20PX6ED57078. (Sold by photo Guthrie, OK)

2004 FORD F-450 CAB ON FRAME, out of service, VIN 1FDXF46P34EA50209. (Sold by photo Guthrie, OK)



**DAY  
2 & 3**

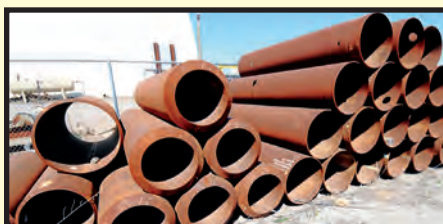
**ONLINE TIMED AUCTION OF INVENTORY:  
WEDNESDAY & THURSDAY, MAY 23 & 24 • 10:00 A.M.**



**BID AT** [\*\*BidSpotter.com\*\*](https://www.bidspotter.com)



**FEATURING: HUGE \$5,000,000.00 PLUS INVENTORY OF TANK COMPONENTS, FINISHED TANKS, SEPARATORS, PIPE FLANGES, ELLIPTICAL & HEMISPHERICAL TANK HEADS, BLIND FLANGES, THIEF HATCHES, & OTHER DRILL SITE COMPONENTS!**



**PPE REQUIRED FOR ESCORTED INSPECTION**

Monday, May 21, 9:00 A.M. to 4:00 P.M. All inspecting parties will be required to bring PPE (hardhat, safety shoes, safety glasses, ear protection). All inspecting parties will sign in at the guard shack and wait for an escort. Prior inspection by appointment only, call (713) 691-4401.

# PLANT & MACHINERY INC.

AUCTIONEERS • APPRAISERS • LIQUIDATORS • REAL ESTATE

P.O. Box 218568  
Houston, TX 77218-8568

## DATED MATERIAL – PLEASE DELIVER

### DAY 1: ON-SITE & WEBCAST AUCTION HIGH-VOLUME STORAGE TANK MANUFACTURING FACILITY

Featuring: (2) Imcar Vertical Systems for Tank Production as new as 2011; Imcar 4-Roll CNC Plate Roll; Upenders; Air Compressors; (34) Miller Welders; Welding Positioners; (35) Tank Hauling Trailers, Step Deck & Gooseneck Trailers, Manitou Telehandler lift, & Much More!

### DAY 2 & 3: ONLINE TIMED AUCTION OF INVENTORY

FEATURING: HUGE \$5,000,000.00 PLUS INVENTORY OF TANK COMPONENTS, FINISHED TANKS, SEPARATORS, PIPE FLANGES, ELLIPTICAL & HEMISPHERICAL TANK HEADS, BLIND FLANGES, THIEF HATCHES, & OTHER DRILL SITE COMPONENTS!



## ATTENTION: PLANT MANAGER OR EQUIPMENT BUYER

Presorted  
First Class Mail  
U.S. Postage  
PAID  
Eugene, Oregon  
Permit No. 17



## DIRECTIONS

Elmore City is Approx. 64 Miles South of the Oklahoma City Airport off of Interstate Highway 35.

## LODGING

Motels are Available in Nearby Paul's Valley, Oklahoma.

## UNABLE TO ATTEND?

Bid on-line in real time at **BidSpotter.com**  
TO PARTICIPATE YOU MUST:

1. Register at [www.BidSpotter.com](http://www.BidSpotter.com). Use the link to BidSpotter on PMI's website calendar. **DO IT NOW.**
2. Either send wire transfer, or, overnight delivery service a cashier's check deposit in the amount of \$3,000 (U.S. Bidders) or \$10,000 (Foreign Bidders) to: Plant & Machinery Inc.

1304 Langham Creek Dr., Suite 454, Houston, TX 77084

Wire transfer instructions can be found at [pmi-auction.com](http://pmi-auction.com). You must be registered and have your deposit in the hands of Plant & Machinery, Inc. at least 24 hours prior to the start of the auction. Failure to register and/or failure to send your deposit to Plant & Machinery, Inc. may disqualify you from bidding. **DON'T WAIT.**

If you need assistance, don't hesitate to call (713) 691-4401. **ALL WEBCAST BIDS ARE SUBJECT TO AN 18% BUYER'S PREMIUM.**

## PPE REQUIRED FOR ESCORTED INSPECTION

Monday, May 21, 9:00 A.M. to 4:00 P.M.  
All inspecting parties will be required to bring PPE (hardhat, safety shoes, safety glasses, ear protection). All inspecting parties will sign in at the guard shack and wait for an escort. Prior inspection by appointment only, call (713) 691-4401.

## FINANCE YOUR AUCTION PURCHASE

Conserve Your Cash & Increase Your Bidding Power

**AuctionLea\$e Provides M&E Financing  
With Approvals from \$5,000  
to \$999,000**

**(800) 438-1470**

**Apply Online:**

[www.AuctionLease.com](http://www.AuctionLease.com)

## PARTIAL TERMS & CONDITIONS

A 15% Buyer's Premium Will Apply On-site.

An 18% Buyer's Premium Will Apply to Webcast Bids. See Above Rules for Participation.

Everything will be sold to the highest bidder or bidders for cash in accordance with the auctioneer's Customary Terms of Sale, copies of which will be posted on the premises.

**ALL PAYMENTS MUST BE MADE BY CASH, CASHIER'S CHECK, WIRE TRANSFER OR COMPANY CHECK WITH BANK LETTER GUARANTEEING PAYMENT TO PLANT & MACHINERY INC.**

Here is an example of what your letter should be: *Mr. "Customer Name" is a customer of this bank. This bank will guarantee unqualified payment to PMI on the account listed herein up to the amount of \$\_\_\_\_\_. This letter is good until June 21, 2018.*

In default of payment of bills in full within the time therein specified, the Auctioneer in addition to all other remedies allowed by law, may retain all monies received as deposit or otherwise, as liquidated damages. All items must be removed by the time announced at the start of the sale.

Lots not paid for and/or removed within the time allowed may be resold at public or private sale without further notice, and any deficiency, together with all expenses and charge of resale, will be charged to the defaulting purchaser.

The buyer acknowledges that he or an agent has inspected all of the assets upon which he will be bidding and/or does purchase.

Buyer agrees to accept assets purchased **"AS IS," WITH "ALL FAULTS" AND "WITH REMOVAL AT BUYER'S RISK AND EXPENSE."** THE AUCTIONEER EXPRESSLY DISCLAIMS ON THE

PART OF THE AUCTIONEER AS AGENT AND THE SELLER, ANY WARRANTY AS TO FITNESS OR USABILITY OF ALL THE ASSETS, AND THE BUYER EXPRESSLY WAIVES ANY CLAIM IN RESPECT TO ANY POSSIBLE FUTURE USE OF ANY ASSET PURCHASED FOR ANY PURPOSE WHATSOEVER.

The buyer does hereby assume and does agree to indemnify and hold the auctioneer harmless from any future claim which shall pertain to the fitness or use of that asset as being purchased. Riggers, movers, electricians and buyers performing work at the Auction Site must provide PMI with evidence of insurance. The insurance coverage must be at a level acceptable to PMI and to the seller. PMI reserves the right to withdraw items, alter the order of the sale, accept bids from the seller, and group lots as it may deem appropriate. This auction may include consignment items.

Although all information has been obtained from sources deemed reliable, the auctioneer and seller make no warranty or guarantee, expressed or implied, as to the accuracy of the information herein contained, or contained in our catalog. It is for this reason that buyers should avail themselves of the opportunity to make inspection prior to the auction. Although it is not likely, auction sales are subject to cancellation or postponement. Kindly contact auctioneer prior to attendance.

These terms and conditions may be modified or supplemented by language in the catalog available at the sale site or by announcement at the start of the sale. Bidders should be attentive to those announcements and to the catalog language.