

# PMI AUCTION

## TREMENDOUS SELECTION OF ITEMS IN (11) LOCATIONS IN TX, LA, & AL TO BE SOLD IN ONE DAY

Featuring: **Unused** Drill-Quip Downhole/Subsea Tree Components; Unused Oil State Subsea Pipeline Products; Reel & Umbilical Cables; Mooring Rope & Components; Many Other Items of Used and Unused Subsea Drilling Equip. & Fabricated Components from Major Manufacturers

**UNUSED**



< (1 OF 2) SUBSEA  
TREES IN GOMEZ  
PACKAGE

> WELLSTREAM 30'  
DIA. REEL AND  
OCEANEERING  
UMBILICAL CABLE  
LOCATION 10



**UNUSED**

By Order of the United States Bankruptcy Court for the Southern District of Texas Houston Division, Janet S. Casciato-Northrup Chapter 7, Trustee Case No. 16-35930 for the Estate of

**BENNU OIL & GAS et al**

**THEATER STYLE BIDDING** To be Conducted at the

**OMNI HOUSTON HOTEL WESTSIDE**

**13210 KATY FWY., HOUSTON, TX 77079**

(On Eldridge on the North Side of I-10) (Directions on Back Page)

**TUESDAY, DECEMBER 11 • 10:00 A.M.**

**INSPECTION:** By Appointment.  
See Details Inside.

**BUYER'S PREMIUM:**  
15% ON-SITE • 18% WEBCAST

**Theater Style Bidding in Houston, TX or Bid Via Webcast at**

**BidSpotter.com**

< DRILL-QUIP  
13-5/8"  
TUBING  
WELLHEAD  
IN MIRAGE  
PACKAGE

> 20" HANGAR  
ON 20"  
OD CASING  
IN GOMEZ  
PACKAGE



**UNUSED**



**UNUSED**

< (1 OF 2) OIL STATES  
PIPELINE PRESSURE  
CAP ASSEMBLIES

> SAMPLE VIEW OF  
CONTAINER W/  
SUBSEA PIPELINE  
AND UMBILICAL  
CONNECTORS



**UNUSED**

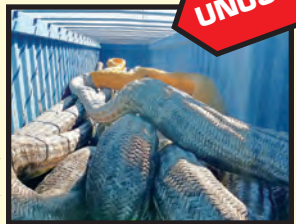


**UNUSED**



< PARTIAL VIEW  
OF 150,000-LB.  
CAP. GAS  
TENSIONER  
BOTTLES

> SAMPLE VIEW  
OF (OVER  
8,000') OF POLY  
MOORING ROPE



**UNUSED**

Read Partial Terms & Conditions on Back Page

Sale Conducted By:

**PLANT & MACHINERY INC.**

AUCTIONEERS • APPRAISERS • LIQUIDATORS • REAL ESTATE

Ron Moore, Texas Lic. #7314

HOUSTON • DALLAS • ST. LOUIS

Headquarters:

1304 Langham Creek Drive, Suite 454  
Houston, Texas 77084

PHONE: (713) 691-4401

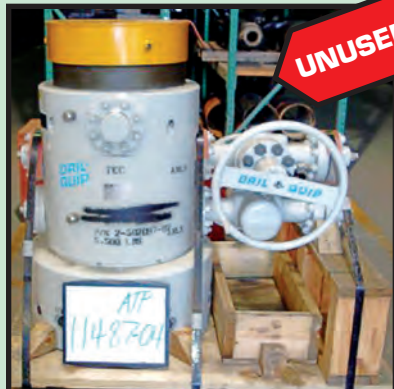
FAX: (713) 672-7905

E-MAIL: [pmi@pmi-auction.com](mailto:pmi@pmi-auction.com)  
WEBSITE: [www.pmi-auction.com](http://www.pmi-auction.com)



**LOCATION #1**  
**DRIL-QUIP, INC.**  
 6401 N. Eldridge Pkwy.,  
 Houston,  
 Texas 77041-3505

**INSPECTION:**  
 By Appointment Only.  
 Contact Chris Oganoskie at  
 (713) 939-0047, Ext. 7711



DRIL-QUIP 13-5/8" TUBING WELLHEAD IN MIRAGE PACKAGE



SKID FOR 12-3/8" MULTI PURPOSE TOOL, JET SUB AND MILL AND FLUSH TOOL

**UNUSED**



(1 OF 2) SUBSEA TREES IN GOMEZ PACKAGE



36" WELLHEAD HOUSING RIGID LOCKDOWN/ ANNULUS SHUT-OFF IN MIRAGE PACKAGE

**MULTI-MILLION \$ INVENTORY OF  
 DRIL-QUIP DOWNHOLE/SUBSEA  
 TREE COMPONENTS TO BE SOLD  
 IN LARGE PACKAGES COINCIDING  
 W/THE OFFSHORE DRILLING  
 PROGRAMS ORIGINALLY  
 PLANNED BY BENNU OIL & GAS**

**PACKAGE #1: "MIRAGE":** (377) line items, including valves, casing hangers, wellhead housings. Most items are unused and stored at the Dril-Quip Aftermarket Services facility in Houston. See detailed inventory spreadsheet on our website.

**PACKAGE #2: "GOMEZ":** (74) line items including (2) unused Subsea Trees, unused tubing and casing hangers and much more. See detailed inventory spreadsheet on our website.

**PACKAGE #3: "TITAN":** (25) line items including torque and test tools. Tie back stingers, test funnels, dog segments and more. See detailed inventory spreadsheet on our website.

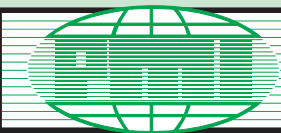
**PACKAGE #4:** (19) line items of miscellaneous items not associated w/the big three above incl. casing hangers, lock rings, ROV panels, and more! See detailed inventory spreadsheet on our website.



36" WELLHEAD HOUSING RIGID LOCKDOWN/ANNULUS SHUT-OFF IN GOMEZ PACKAGE



20" HANGAR ON 20" OD CASING IN GOMEZ PACKAGE



**AUCTION**

**UNUSED**



RISER HANDLING TOOL COMPONENT IN MIRAGE PACKAGE



RUNNING TEST TOOL FOR 10-3/4" TENSIONER ADAPTER JOINT AND 3-5/8" WELLHEAD IN MIRAGE PACKAGE



## LOCATION 2

### OIL STATES INDUSTRIES

6120 E. Orem Drive, Houston, Texas 77048

INSPECTION: By Appointment Only.  
Contact Bob Galloway at (713) 445-2382

#### SUBSEA PIPELINE PRODUCTS

(2) OIL STATES PART #RA-086565 PRESSURE CAP ASSEMBLIES, unused, 4-1/16" dia. cap., 15,000 API, S/N 21274, S/N 21275.

(2) OIL STATES PART #RE-086463 REMOTE ARTICULATING CONNECTOR ASSEMBLIES, unused, female, 4-1/16", 10,000 API w/gooseneck weld neck fitting, and each equipped w/Oil States clamp assembly/lift support gooseneck 4" nominal. (RAC S/N 19549 is paired w/clamp ASSY RA-086809 S/N 9691.01.0003-02. RAC S/N 19550 is paired w/clamp ASSY RA-086808 S/N 9691-01-003-01).

(2) OIL STATES PART # RA-080085 REMOTE ARTICULATING CONNECTOR ASSEMBLIES, female, 4-1/16" 10,000 API, 3.4638" bore, S/N 18884, S/N 18883. Needs refurb.

OIL STATES PART # RI-075786 REMOTE INLINE CONNECTOR ASSEMBLY, female, 4-1/16" 10,000 API, 3.4638" bore, S/N 18884, S/N 18883. Needs refurb.



(1 OF 2)  
OIL STATES PIPELINE  
PRESSURE CAP ASSEMBLIES



(1 OF 2) OIL STATES  
REMOTE ARTICULATING  
CONNECTOR ASSEMBLIES



**Do You Have  
Surplus to Sell?  
Call 1-800-AUCTION**

## LOCATION 3

### OIL STATES INDUSTRIES

16730 Jacintoport Blvd., Houston, Texas 77015

INSPECTION: By Appointment Only. Contact Bob Galloway at (713) 445-2382



#### SUBSEA PIPELINE PRODUCTS

(8) PIPELINE PRESSURE CAP., Oil States Part #RA-062005 pressure cap assembly, 4-1/16" dia. cap., 10,000 API, remote articulating connector, S/N 16116, S/N 16185, S/N 16209, S/N 16210, S/N 16216, S/N 16457, S/N 16876, S/N 16878. All need refurb.

(3) PIPELINE PRESSURE CAP., Oil States Part #RI-075788 pressure cap assembly, remote inline connector, 5-1/8" dia. cap., 10,000 API, S/N 18390, S/N 18391, S/N 19088. All need refurb.

(2) PIPELINE PRESSURE CAP., Oil States Part #RI-076460 pressure cap assembly, remote inline connector, 4-1/16" dia. cap., 15,000 API, S/N 18399, S/N 18400. Both need refurb.

## LOCATION 4

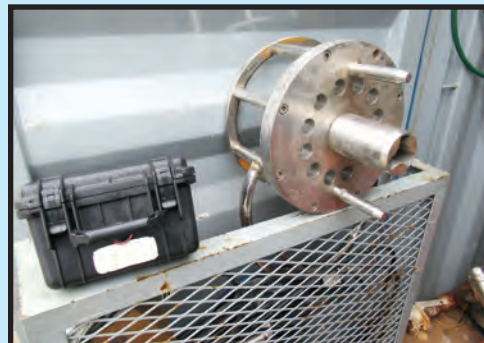
### OCEAN EDGE SERVICES

6720 Theall Road,  
Houston, Texas 77066

INSPECTION: By Appointment Only.  
Contact Matt Rodriguez at (832) 604-7245

#### CONTAINER WITH SUBSEA RELATED CONTENTS

8' X 4' CONTAINER W/CONTENTS: SUBSEA CONNECTORS; UMBILICAL CONNECTORS INCL. MSCM MALE AND FEMALE CONNECTORS FOR HYDRAULIC FLYING LEADS (HFLS); MSCM PLATES; ELECTRICAL FLYING LEAD COMPONENTS (EFLS); UNITECH ITEMS USED ON PIPELINE END TERMINALS (PLET); ODI PLUGS; MORE.



**TUESDAY, DECEMBER 11 • 10:00 A.M.**

Theater Style Bidding in Houston, TX or  
Bid Via Webcast at **BidSpotter.com**

**LOCATION 5  
GULF ISLAND  
FABRICATION**

**567 Thompson Road,  
Houma, Louisiana 70363**

**INSPECTION:**

By Appointment Only.  
Contact Barry LeBouef  
at (985) 850-4577



PARTIAL VIEW OF 150,000-LB. CAP.  
GAS TENSIONER BOTTLES



SEVERAL CONTAINERS FULL OF  
VALVES OR OTHER SUPPLIES

**STABILIZATION COMPONENTS, MISCELLANEOUS PARTS**

150,000-LB. CAP. TENSIONER PRESSURE BOTTLES; SEVERAL CONTAINERS W/VARIOUS CONTENTS INCL. TENSIONER PARTS; BALLAST PARTS; TROLLEY PARTS; WIRE ROPE; STAINLESS STEEL SPOOLS; VALVES; MORE.



SAMPLE VIEW OF PRESSURE CAPS



MANY PIPELINE RELATED FABRICATED  
COMPONENTS: PLETS AND MORE

**LOCATION 6  
PERFORMANCE ENERGY  
SERVICES**

**250 North American Court,  
Houma, Louisiana 70363**

**INSPECTION:**

By Appointment Only.  
Contact Dirk Dempster at  
(985) 850-9537

**PIPELINE END TERMINATION COMPONENTS & MORE**

SEA CONTAINER W/CONTENTS INCL. (4) 4-1/16" PLET-18 HUB PRESSURE CAP ASSEMBLIES; PLET-22 HUB FEMALE; 10K W/TRANSITION ADAPTOR; MORE.

PLET W/YOKE, ROV Panels; HOLD BACK ANCHOR.

MANY OTHER ITEMS INCL. ANODES; HOLD BACK ANCHOR PLATES; PULL IN BEAMS; SLEEVE SUPPORTS; I-BEAMS; STIFFNER PLATES; RISER GUARD, RTJ BALL VALVES; FLANGES; HEAVY WALL PIPE; DRIFT TOOLS; VALVE ASSEMBLY; MORE.

**LOCATION 7  
INTERMOOR, INC.**

**540 Dudley Bernard Road,  
Golden Meadow,  
Louisiana 70357**

**INSPECTION:**

By Appointment Only.  
Contact Wayne St. Pierre  
at (985) 396-2410



SAMPLE VIEW OF (OVER 8,000') OF POLY  
MOORING ROPE



POLY-TO-POLY AND POLY-TO-CHAIN H-LINKS

(5) 40' CONTAINERS CONTAINING VARYING LENGTHS OF POLY DEEP WATER MOORING ROPE UP TO 2,067 LONG.  
POLY TO POLY H-LINKS AND POLY TO CHAIN H-LINKS.  
PLUS: MOORING BALL GRAB; PLUGS FOR MUD MATS.



## LOCATION 8 SUPREME SERVICES

204 Industrial Avenue C,  
Houma, Louisiana 70364

**INSPECTION:** By Appointment Only.  
Contact Brandy Theriot at (985) 655-3040

**SUBSEA PIPING COMPONENTS:** SHUNT LINE PIPING; STABBING GUIDES; SLIP JOINT CAPS; PUP JOINTS; SUBS; COFLEX HOSE; GOOSENECKS; MORE.

**PIPELINE RIGGING:** LATCH MANDRELS; TRANSPORT SLINGS; TRANSFER SHACKLES.

**MISC. RIGGING:** 1/2" CHAIN; CHAIN BINDERS; SHACKLES; SLINGS; CHAIN HOISTS.

**MANY OTHER ITEMS—SEE CATALOG – PLEASE INSPECT**



**BARRELS OF CHAIN AND OTHER RIGGING SUPPLIES**



**PARTIAL VIEW OF SUBSEA PIPING COMPONENTS**

## LOCATION 9 SUPREME SERVICES

501 E. Main Street, Lockport, Louisiana 70474

**INSPECTION:** By Appointment Only.  
Contact Brandy Theriot at (985) 655-3040

**3500' LENGTH OF TEC CONTROL LINE:** Unused, on spool.

**SCREENS:** 175 Micron Prod. screens; SLHT screens; CS Delt screens.

**PIPE:** Schlumberger blank pipe in various sizes.

**UMBILICAL CLAMPS:** (Approx. 91) 6-5/8" x 1-3/4".

**PIPELINE RIGGING:** Transfer slings and shackles; Latch Mandrels; More.



**SAMPLE VIEW OF ASSORTED SCREENS**



**PORTED SLICK JOINTS, LATCH MANDRELS AND MORE**

**UNUSED**

**UNUSED**

## LOCATION 10 CORE INDUSTRIES

2640 Claudia Lane, Theodore, Alabama 36582

**INSPECTION:** By Appointment Only.  
Contact Richard Gaal at (251) 431-8831

**REEL:** Manufactured by Wellstream, 30' dia.

**UMBILICAL CABLE:** Manufactured by Oceaneering. Currently on third party reel so Umbilical must be transpooled onto wooden reel. Umbilical related parts in crates stored inside.

**ALSO: (1) MUDMAT; (1) CASSETTE,** Misc. Subsea components in crates.



**WELLSTREAM 30' DIA. REEL AND OCEANEERING UMBILICAL CABLE**

**UNUSED**

## LOCATION 11 SOUTHERN SOLID WASTE

6036 Farm Road, Iowa, Louisiana 70647

**INSPECTION:** By Appointment Only.  
Contact Cheyenne Boudreaux at (337) 426-1840

### UMBILICAL

**UMBILICAL ON WOODEN SPOOL,** 9-Nitronic 19D Tube (.625 x .065" wall) w/2-quad, fluid type – TransAqua, 10,000 PSA, w/deep down Cobra-Head each end; Parker Umbilical cross section DWG #CSP-1991-B1B Rev A.



**ADDITIONAL LOCATIONS MAY BE ADDED.  
CHECK ONLINE VIRTUAL BROCHURE FOR UPDATED INFORMATION.**

# PLANT & MACHINERY INC.

AUCTIONEERS • APPRAISERS • LIQUIDATORS • REAL ESTATE

P.O. Box 218568  
Houston, TX 77218-8568

**DATED MATERIAL – PLEASE DELIVER**



**PUBLIC INVITED**

**THURSDAY, DECEMBER 11 • 10:00 A.M.**



## TREMENDOUS SELECTION OF ITEMS IN (11) LOCATIONS IN TX, LA, & AL TO BE SOLD IN ONE DAY

Featuring: Unused Drill-Quip Downhole/  
Subsea Tree Components; Unused Oil State  
Subsea Pipeline Products; Reel & Umbilical  
Cables; Mooring Rope & Components;  
Many Other Items of Used and Unused Subsea  
Drilling Equip. & Fabricated Components  
from Major Manufacturers



**ATTENTION: PLANT MANAGER  
OR EQUIPMENT BUYER**

Presorted  
First Class Mail  
U.S. Postage  
PAID  
Eugene, Oregon  
Permit No. 17

### DIRECTIONS

**FROM THE GEORGE BUSH INTERCONTINENTAL AIRPORT:** Proceed south on JFK Blvd. to Beltway 8. Turn right (west) onto Beltway 8 and enter onto the Sam Houston Tollway/Beltway 8. This will become a toll road. Proceed counterclockwise around Houston on the Sam Houston Toll Road until you come to Interstate Highway 10. Proceed west on I-10 (towards San Antonio) and take the exit for Eldridge a short distance ahead. Turn right on to Eldridge and the hotel will be on your left. Follow the signs to the ballroom.

### LODGING

**OMNI HOUSTON HOTEL WESTSIDE** (the sale site)  
13210 Katy Freeway ..... (281) 558-8338

### UNABLE TO ATTEND?

Bid on-line in real time at  
**TO PARTICIPATE YOU MUST:** **BidSpotter.com**

1. Register at [www.BidSpotter.com](http://www.BidSpotter.com). Use the link to BidSpotter on PMI's website calendar. **DO IT NOW.**
2. Either send wire transfer, or, overnight delivery service a cashier's check deposit in the amount of \$3,000 (U.S. Bidders) or \$10,000 (Foreign Bidders) to:

**Plant & Machinery Inc.**

**1304 Langham Creek Drive, Suite 454, Houston, TX 77084**

Wire transfer instructions can be found at [pmi-auction.com](http://pmi-auction.com)

You must be registered and have your deposit in the hands of Plant & Machinery, Inc. at least 24 hours prior to the start of the auction.

Failure to register and/or failure to send your deposit to Plant & Machinery, Inc. may disqualify you from bidding. **DON'T WAIT.**

If you need assistance, don't hesitate to call (713) 691-4401.

**ALL WEBCAST BIDS ARE SUBJECT TO AN 18% BUYER'S PREMIUM.**

### FINANCE YOUR AUCTION PURCHASE

Conserve Your Cash & Increase  
Your Bidding Power

**AuctionLea\$e Provides  
M&E Financing**

**With Approvals  
from \$5,000  
to \$999,000**

**(800) 438-1470**

**Apply Online:**  
[www.AuctionLease.com](http://www.AuctionLease.com)

### PARTIAL TERMS & CONDITIONS

A 15% Buyer's Premium Will Apply On-site. An 18% Buyer's Premium Will Apply to Webcast Bids. See Above Rules for Participation.

Everything will be sold to the highest bidder or bidders for cash in accordance with the auctioneer's Customary Terms of Sale, copies of which will be posted on the premises.

**ALL PAYMENTS MUST BE MADE BY CASH, CASHIER'S CHECK, WIRE TRANSFER OR COMPANY CHECK WITH BANK LETTER GUARANTEEING PAYMENT TO PLANT & MACHINERY INC.**

Here is an example of what your letter should be: *Mr. "Customer Name" is a customer of this bank. This bank will guarantee unqualified payment to PMI on the account listed herein up to the amount of \$\_\_\_\_\_.* This letter is good until January 11, 2019.

In default of payment of bills in full within the time therein specified, the Auctioneer in addition to all other remedies allowed by law, may retain all monies received as deposit or otherwise, as liquidated damages. All items must be removed by the time announced at the start of the sale.

Lots not paid for and/or removed within the time allowed may be resold at public or private sale without further notice, and any deficiency, together with all expenses and charge of resale, will be charged to the defaulting purchaser.

The buyer acknowledges that he or an agent has inspected all of the assets upon which he will be bidding and/or does purchase.

Buyer agrees to accept assets purchased **"AS IS," WITH "ALL FAULTS" AND "WITH REMOVAL AT BUYER'S RISK AND EXPENSE."** THE AUCTIONEER EXPRESSLY DISCLAIMS ON THE PART OF THE AUCTIONEER AS AGENT AND THE SELLER, ANY WARRANTY AS TO FITNESS OR

**USABILITY OF ALL THE ASSETS, AND THE BUYER EXPRESSLY WAIVES ANY CLAIM IN RESPECT TO ANY POSSIBLE FUTURE USE OF ANY ASSET PURCHASED FOR ANY PURPOSE WHATSOEVER.**

The buyer does hereby assume and does agree to indemnify and hold the auctioneer harmless from any future claim which shall pertain to the fitness or use of that asset as being purchased. Riggers, movers, electricians and buyers performing work at the Auction Site must provide PMI with evidence of insurance. The insurance coverage must be at a level acceptable to PMI and to the seller. PMI reserves the right to withdraw items, alter the order of the sale, accept bids from the seller, and group lots as it may deem appropriate. This auction may include consignment items.

Although all information has been obtained from sources deemed reliable, the auctioneer and seller make no warranty or guarantee, expressed or implied, as to the accuracy of the information herein contained, or contained in our catalog. It is for this reason that buyers should avail themselves of the opportunity to make inspection prior to the auction. Although it is not likely, auction sales are subject to cancellation or postponement. Kindly contact auctioneer prior to attendance.

These terms and conditions may be modified or supplemented by language in the catalog available at the sale site or by announcement at the start of the sale. Bidders should be attentive to those announcements and to the catalog language.