

# GLOBAL WEBCAST AUCTION

## CLOSURE OF PRECISION STAINLESS TUBE MANUFACTURING FACILITY

Laser Tube Mills with Rafted Stands, Tube Recut Machines and Plant Support Equipment

Online Only Webcast | No On-Site Bidding



**PLYMOUTH TUBE CO** USA®

**WEDNESDAY, FEBRUARY 15<sup>TH</sup> @ 11:00AM ET**

**PREVIEW & INSPECTION:** By Appointment Only

**LOCATION:** Plymouth Specialty Mfg. – 107 Fieldview Drive, Versailles, KY 40383

**2012**



KUSAKABE Rafted Pipe Mill with Tooling

**2004**



KUSAKABE Rafted Pipe Mill with Tooling

**2008**



3" HAVEN 873 Recut Machine with End Finishing/Deburring



TOYOTA 5,750 Lb. Capacity Electric Forklift

**2 Available**

**FOR FURTHER INFORMATION CONTACT:** Ken Planet at 248.238.7988 or email [Kplanet@maynards.com](mailto:Kplanet@maynards.com)

SALE CONDUCTED BY:

**Maynards**  
SINCE 1902

AUCTIONS | LIQUIDATIONS | APPRAISALS

17177 N. Laurel Park Drive, Suite 236  
Livonia, MI 48152

**248.569.9781 | [maynards.com](http://maynards.com)**

SALE IN PARTNERSHIP WITH:

**GALAXIE**  
CORPORATION  
Worldwide Metalworking Equipment Dealer





## 2012 KUSAKABE RAFTED PIPE MILL WITH TOOLING

- **2012 - 2.5" (63.5mm) x .078" (2mm) Kusakabe Stainless Pipe Mill with Rafted Stands**, Tube Diameter Range .413" – 2.50" (10.5 mm – 63.5 mm), Wall Thickness Range .031" - .078" (.8 mm – 2 mm), Line Speed 6' – 98'/min (2-30 m/min), Line Direction R to L, Kent Uncoiler w/Peeler Hold Down, Kent Shear/End Welder, Lincoln Welding Power Supply, Kent Vertical Accumulator; Entry Edge Guides, 7 Forming Stands – Rafted, 5 Side Roll Stands; Rofin DC060+W Profile Welding System with Optical Cabinet, 6 kW Output; 4-Roll Weld Box; De-Oxidizing Chamber; XIRIS Weld Monitorizing Camera; Polishing Section with Polishing & Brushing Heads; Caterpillar Drive w/2 x 22 kW motors (Kusakabe Design); Modular Sizing Mill; Pruftechnik Mdl. Eddychek 5 Eddy Current Tester; Turks Head; Printer; Rotary Flying Cut-Off; End Table; Spare Parts; **Tooling Sets for Sizes:** 17 mm, 25.4 mm, 28.6 mm, 35 mm, 38.1 mm, 42.7 mm, 54 mm, 57.15 mm, 60.5 mm.







## **2012 KUSAKABE RAFTED PIPE MILL WITH TOOLING (Continued)**



**FOR FURTHER INFORMATION CONTACT:** Ken Planet at 248.238.7988 or email [Kplanet@maynards.com](mailto:Kplanet@maynards.com)





## 2004 KUSAKABE RAFTED PIPE MILL WITH TOOLING

- **2004 - 2.5" (63.5mm) x .078" (2mm) Kusakabe Stainless Pipe Mill with Rafted Stands**, Tube Diameter Range .413" – 2.50" (10.5 mm – 63.5 mm), Wall Thickness Range .031" - .078" (.8 mm – 2 mm), Line Speed 6' – 98'/min (2-30 m/min), Line Direction L to R, Uncoiler w/Peeler Hold Down, Shear/End Welder, Panasonic Tig Mate Power Supply, Vertical Accumulator; Entry Edge Guides, 7 Forming Stands – Rafted, 5 Side Roll Stands; Rofin DC 060 Laser Welder, 6 kW Output, New Welding Head 2021; 4-Roll Weld Box; De-Oxidizing Chamber; XIRIS Weld Monitorizing Camera; Polishing Section with Polishing & Brushing Heads; Caterpillar Drive w/2 x 22 kW motors (Kusakabe Design); Seam Annealer; Modular Sizing Mill; Pruftechnik Mdl. Eddychek 5 Eddy Current Tester; Turks Head; Printer; Rotary Flying Cut-Off; End Table; Spare Parts; **Tooling Sets for Sizes:** 17 mm, 25.4 mm, 28.6 mm, 35 mm, 38.1 mm, 42.7 mm, 54 mm, 57.15 mm, 60.5 mm.





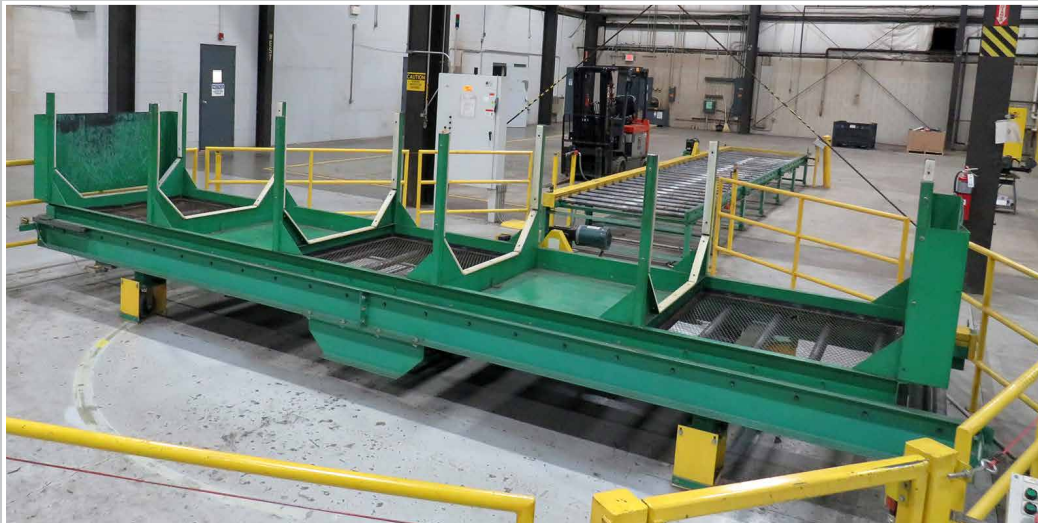


## 2004 KUSAKABE RAFTED PIPE MILL WITH TOOLING *(Continued)*



### **TUBE BUNDLE TURNER, TENSILE TESTER & FLARE TESTER/FLATTENERS**

- Commonwealth Material Handling Tube Bundle Turning Machine
- Maekawa Mdl. MRA-50-F2 Tensile Testing Machine, Capacity 300 kN, S/N 9393
- 2012 – Soco Mdl. EF-AC/80 Tube Chamfering Machine, Capacity 80 mm, S/N 0212EF80CO35
- (2) 50-Ton Capacity Hydraulic Flattening Test Presses
- SK Hydraulic Tube Expanding Tester



**COMMONWEALTH** Material Handling Tube Bundle Turning Machine



**BECKWOOD** Tube Expanding Press



**MAEKAWA** MRA-50-F2 Tensile Testing Machine



**2012**  
**SOCO** EF-AC/80 Tube Chamfering Machine



**SK** Hydraulic Tube Expanding Tester

**FOR FURTHER INFORMATION CONTACT:** Ken Planet at 248.238.7988 or email [Kplanet@maynards.com](mailto:Kplanet@maynards.com)



## TUBE & BAR RECUT MACHINES

- (2) 2004 - 2" Kusakabe Rotary Tube Recut Machines, Tube Diameter .413" – 2.00", Wall Thickness .031" - .078", Linear Measuring System, ID/OD Chamfering Both Ends, Vacuum Lifter, Auto Index into Rotary Cut-Off, Blow Out, Production 2000 Parts/Hour
- 2008 - 3" Haven Mdl. 873 Recut Machine with End Finishing/Deburring, Tube Diameter .50" – 3.00", Max Wall Thickness .125", Double Blade Shear, S/N 7116; Haven Mdl. 918 End Finisher, ID/OD End Finishing, Auto Index, S/N 7117
- 2013 - 3-1/4" Modern Mdl. 3S Tube & Bar Recut Machine, Max Tube/Bar Diameter 3.25", Max Length 120", Capacity Approx. 185 Pieces/Hour, Servo Lathe Cut-Off, OD & ID Chamfering, Deburring, Auto Load/Index, Tube Blow Out, S/N 35-3612
- 2016 - 4.5" Bardons and Oliver Rotary Cut Off with Haven End Finishing Machine, Tube Diameter .50" – 4.50", Wall Thickness .02" – 1.00", Part Length Range 3.93" – 120", Stock Length Range 10' – 24', ID/OD Chamfering, S/N M-5749; Haven Double End Chamfering Capacity: Diameter .50" – 3.00", Wall Thickness .028" – 1.20"; Haven Mdl. 939 Auto-Load Machine



**2004**



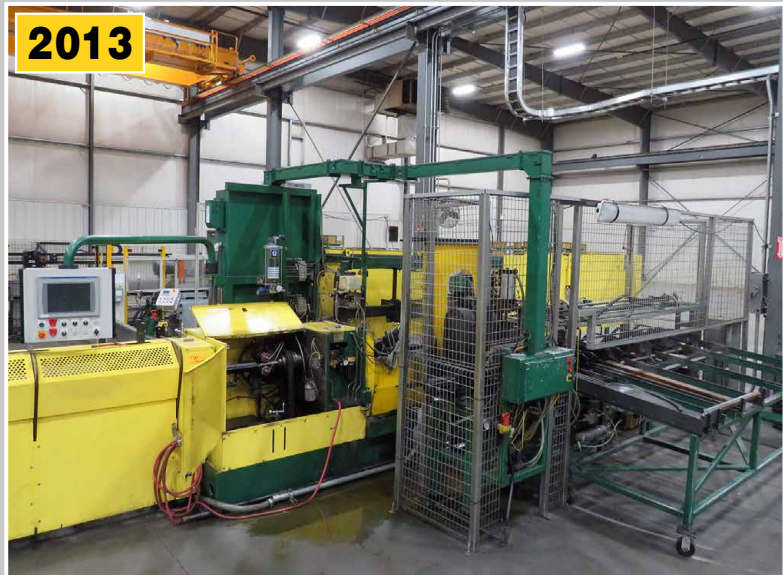
**2 Available**

2" KUSAKABE Rotary Tube Recut Machines



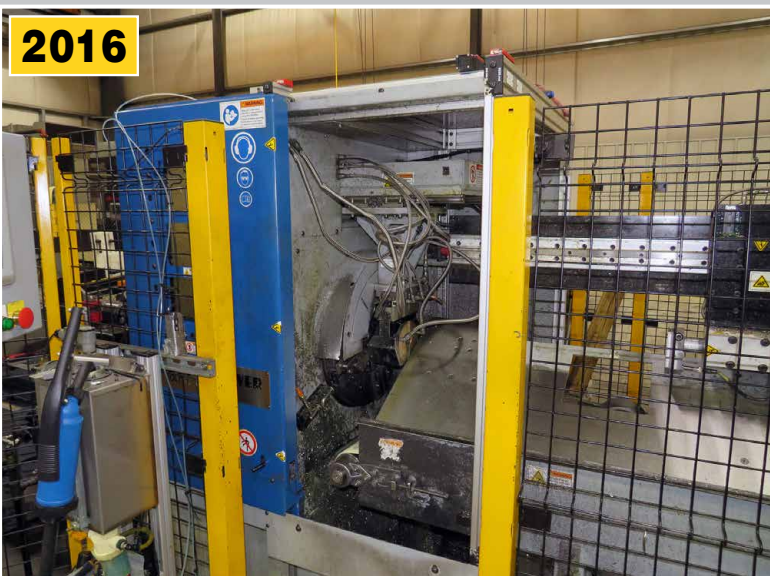
**2008**

3" HAVEN 873 Recut Machine with End Finishing/Deburring



**2013**

3-1/4" MODERN 3S Tube & Bar Recut Machine



**2016**

4.5" BARDONS & OLIVER Rotary Cut Off with Haven End Finishing Machine



HAVEN Double End Chamfering Machine





## CNC TURNING CENTER

- 2004 - Mazak Quick Turn Nexus 250 CNC Turning Center, 12 Position Turret, Programmable Tailstock, Jorgenson Chip Conveyor, Mazatrol 640T Nexus CNC Control, S/N 171360

**2004**



**MAZAK** Quick Turn Nexus 250 CNC Turning Center

## LAB EQUIPMENT

- Mitutoyo / Akashi Mdl. HV-113 Digital Hardness Testing Machine, Code 810-981A, S/N 720185
- Olympus Mdl. GX 71F Metallurgical Microscope, S/N T2 No. 4A21603
- Buehler Mdl. ElectroMet 4 Power Source & Buehler Mdl. EM4 Electropolisher Cell Module, S/N 675-E4P-01092
- 2017 - Buehler Mdl. EcoMet 250 Grinder-Polisher, Model 49-7200, S/N E25G-02522
- (3) Mitutoyo Mdl. CD-40" C Absolute Digimatic Calipers
- Mitutoyo Mdl. 293 Coolant Proof Digimatic Micrometers, Capacity to 10"
- Micrometer Mdl. 103 OD Micrometers
- Mitutoyo Bore Gauge



**MITUTOYO / AKASHI** HV-113 Digital Hardness Testing Machine

## ROLLING STOCK

- (2) Toyota 5,750 Lb. Capacity Electric Forklifts, Model 7FBCU32, Side Shift, Max Lift 187", S/N 64390 & 61567
- EnerSys Enforcer Mdl. HF IQ Charger
- General Battery Mdl. MX3-18-1000 Charger



**TOYOTA** 5,750 Lb. Capacity Electric Forklift

**2 Available**



**BUEHLER** ElectroMet 4 Power Source & **BUEHLER** EM4

**2017**



**BUEHLER** EcoMet 250 Grinder-Polisher





## PLANT SUPPORT EQUIPMENT

- (2) Air Cleaning Technology Mdl. ACT2-8 Dust Collectors
- (750) Lift-All Tuff Edge Type EE2-804T Eye-Eye 4" W x 11' L Polyester Web Slings
- Quantities of Piccola Mfg./Master Engineering Steel Fabricated Tube/Pipe Storage Racks & Coil Storage Racks
- Thermal Dynamics Mdl. Cutmaster 51 Plasma Cutter, S/N 3110054
- Jet Mdl. J-8201K – 14" Wood/Metal Vertical Band Saw, S/N 13012431
- Jet Horizontal Band Saw, S/N E310262
- Jet Mdl. JDP-15M Drill Press, S/N 3110054
- Kalamazoo Chop Saw
- Baldor Pedestal Grinder
- Baldor Belt Sander
- Banding Carts
- Zebra Mdl. ZT230 Printer
- Adam Equipment Mdl. LBK6a Scale
- Pallet Racking
- Storage Shelves & Cabinets
- Flammables Storage Cabinets
- Steel Shop Tables & Hand Tools



**LIFT-ALL** Tuff Edge Eye-Eye 4" W x 11' L Polyester Web Slings



Tube Storage Racks



**THERMAL DYNAMICS** Cutmaster 51 Plasma Cutter



**JET** J-8201K – 14" Wood/Metal Vertical Band Saw



Banding Carts

**TERMS & CONDITIONS | PAYMENT:** Full payment within 24 hours. Payment is Cash, Cashier's check, Certified Check, or Wire Transfer. No other forms of payments will be accepted. Full Payment Must be Made before removal of Purchase. Everything is Sold "As-Is, Where-Is". All Sales Final. Cost and Responsibility for Removal of Purchase Remains with the Purchaser. Every Effort will be Made to Facilitate Removal. While Qty. and Descriptions are Believed to be Accurate, the Auctioneer, Owners or Counsel Make no Warranties or Guarantees Either Expressed or Implied as to Authenticity, Genuineness of, or Defects in Any Lot and will not be Held Responsible for any Advertising Discrepancies or Inaccuracies. No Warranties Whatsoever are Made as to Condition Merchantability or Fitness for Use of Any Item. May we Suggest you Take Full Advantage of the Preview and Inspection Period. **Sale Subject to Additions, Deletions and Prior Sales. Please Check Availability of Equipment.**

**AN ONLINE BUYER'S PREMIUM OF 18% WILL BE CHARGED ON ALL SUCCESSFUL BIDS.**