



AUCTION

HUGE PIPE FABRICATING FACILITY CLOSING

Featuring: Plate Rolls Up to 20'W. Cap. & Up to 2.5" Thick; O.D. & I.D. Pipe Welding Systems; Gas Fired Car Bottom Furnace; Side Beam Welder; Manipulators; Turning Roll Sets; Fit-Up Rolls; Positioners; (30+) Welders; Plate Edge Burning System; Wire & Flux; 24" Bandsaw; Sand Blast; Air Compressors Up to 150 HP; Forklifts Up to 55,000-Lb. Cap.; Cranes; Grader; Boom Lift; Shop Tools; Huge Qty. of M.R.O. Items; Much More!

PLUS Items in OK City to Be Sold by Photo (See Pgs. 10 & 11) and Real Estate in Wagoner OK for Sale by Private Negotiation (See Pg. 9).



BOLDRINI 20' X 1-1/2" DOUBLE PINCH PLATE ROLL



HUBER GAS FIRED CAR BOTTOM FURNACE



BERTSCH 10' X 2-1/2" MDL. 30 INITIAL PINCH PLATE BENDING ROLL



**< (2) RANSOME
SHD 12' X 21'
WELDING
MANIPULATORS**



**> TAYLOR
33,000-LB.
CAP. DIESEL
FORKLIFT**

Read Partial Terms and Conditions on Back Page of Brochure

At the Premises of
K-2 PIPE & STEEL, LLC
(Formerly LA Barge & MRC Global Facility)
**1300 NORTH LA BARGE AVENUE
WAGONER, OKLAHOMA 74467**
(See Directions on Back Page)

**AUCTION: TUESDAY,
APRIL 10 • 10:00 A.M.**

INSPECTION:

Monday, April 9,
9:00 A.M. to 4:00 P.M.
& Morning of Sale

BUYER'S PREMIUM:

**15% ON-SITE
18% WEBCAST**

**On-Site Bidding in
Wagoner, Oklahoma
or Bid Via Webcast at**

BidSpotter.com

Sale Conducted By:

PLANT & MACHINERY INC.
AUCTIONEERS • APPRAISERS • LIQUIDATORS • REAL ESTATE
HOUSTON • DALLAS • ST. LOUIS

E-MAIL: pmi@pmi-auction.com • WEBSITE: www.pmi-auction.com

Headquarters:
1304 Langham Creek Drive, Suite 454
Houston, Texas 77084

PHONE: (713) 691-4401

FAX: (713) 672-7905

INSPECTION:

Monday, April 9, 9:00 A.M. to 4:00 P.M.
& Morning of Sale



BOLDRINI 20' X 1-1/2" DOUBLE PINCH PLATE ROLL

DOUBLE PINCH PLATE BENDING ROLL

BOLDRINI 20' X 1-1/2" MDL. PSIR, pwr'd. lower rolls, 24" top roll dia., 22" bottom roll dia., spare 26" interchangeable top roll, variable spd. roll drive, digital roll position indicators, variable rolling spds., portable control pulpit, 75 kW roll adj. motors, 175 kW main drive motor, S/N 2818.



LARGER QUANTITY OF REPLACEMENT PARTS FOR THESE PLATE ROLLS AVAILABLE. CONTACT AUCTIONEER.

INITIAL PINCH PLATE BENDING ROLLS

BERTSCH 10' X 2-1/2" MDL. 30, 28" lower rolls, 26" top roll, 8" max. daylight, 60 HP 2-spd. lower roll adjustment, hyd. top roll drive for plate feeding, 125 HP main drive motor, hyd. digital position readout, pedestal control, S/N M10328.

WEBB 10' x 1-3/16" MDL. 18L2, 19" top roll dia., air drop end, pwr. roll adj., control pedestal, digital roll position indicator, S/N 7197.



BERTSCH 10' X 2-1/2" MDL. 30 INITIAL PINCH PLATE BENDING ROLL



WEBB 10' X 1-3/16" INITIAL PINCH PLATE BENDING ROLL



CAR BOTTOM FURNACE

HUBER, gas fired, 11'-6"W. x 8'-10"H. x 24'D. internal dims., pwr'd. car w/refractory bed, ceramic wool lining, (6) Eclipse gas burners and manifold, Honeywell digital controls and strip chart recorder.

At the Premises of
K-2 PIPE & STEEL, LLC
(Formerly LA Barge & MRC Global Facility)
1300 NORTH LA BARGE AVENUE
WAGONER, OKLAHOMA 74467
(See Directions on Back Page)

AUCTION: TUESDAY, APRIL 10
10:00 A.M.



EXTERNAL PIPE WELDING SYSTEMS

RANSOME MDL. 12X12, 12'L. adj. ht. stinger boom w/external welding head, twin wire sub-arc arrangements w/Lincoln Mdl. AC1200 pwr. source, S/N AC505408 and Lincoln Mdl. DC1000 pwr. source, S/N U1050321197, Lincoln Mdl. NA-3S and Mdl. NA-4 sub-arc weld controls, flux tank and box, digital spd. readouts, Ransome 15 T. cap. Mdl. PMCAR pwr. motion roller car, 5 T. load cap., welding spds.: 7-200 IPM, flux vacuum, flux hopper, car track and related accessories, dual wire arrangement, S/N 6628082.

RANSOME MDL. 12X12, 12'L. adj. ht. stinger boom w/external welding head, twin wire sub-arc arrangements w/Lincoln Mdl. DC1000 pwr. source, S/N AC768137, Lincoln AC1200 pwr. source, S/N AC505403, Lincoln Mdl. NA-3S and Mdl. NA-4 sub-arc weld controls, flux tank and box, digital spd. readouts, Ransome 15 T. cap. Mdl. PMCAR pwr. motion roller car, 5 T. load cap., welding spds.: 7-200 IPM, flux vacuum, flux hopper, car track and related accessories, dual wire arrangement, S/N 6628085.



INTERNAL PIPE WELDING SYSTEMS

RANSOME MDL. 12X12, 12'L. adj. ht. stinger boom w/internal welding head, twin wire sub-arc arrangements w/Lincoln Mdl. AC1200 and Mdl. DC1000 pwr. sources, Lincoln Mdl. NA-3S sub-arc weld controls, flux tank and box, digital spd. readouts, Ransome 15 T. cap. Mdl. PMCAR pwr. motion roller car, welding spds.: 7-200 IPM, flux vacuum, car track and related accessories, S/N 6628083.

RANSOME MDL. 12X12, 12'L. adj. ht. stinger boom w/internal welding head, twin wire sub-arc arrangements w/Lincoln Mdl. DC1000 pwr. source, S/N U1981205742, Lincoln AC1200 pwr. source, S/N AC505395, Lincoln Mdl. NA-3S and Mdl. NA-4 sub-arc weld controls, flux tank and box, digital spd. readouts, Ransome 15 T. cap. Mdl. PMCAR pwr. motion roller car, 5 T. load cap., welding spds.: 7-200 IPM, flux vacuum, flux hopper, car track and related accessories, dual wire arrangement, manipulator, S/N 6214202, pipe mill car, S/N 628084.



SIDE BEAM WELDER

WEBB MDL. U-10 CANTILEVER DESIGN, 44' rail length, approx. 78" reach, adj. rail ht. x center drive screw, hyd. transverse adjustment, (2) manual saddles, approx. 11' max. ht. under rail, S/N 7198.

**DON'T
MISS THIS
SALE!**

**PLANT
& MACHINERY INC.
APPRAISAL DIVISION**
Confidential Industrial Machinery
& Equipment Appraisals
Call **1-800-282-8466**





RANSOME SHD (SUPER HEAVY DUTY) 12' X 21' WELDING MANIPULATOR



RANSOME 12' X 15' WELDING MANIPULATOR



PRESTON EASTIN 12' X 12' HD WELDING MANIPULATOR



RANSOME 12' X 12' WELDING MANIPULATOR

WELDING MANIPULATORS

(2) RANSOME MDL. SHD12X21 (SUPER HEAVY DUTY), new 2001, 12' vert. travel, 21' horiz. travel, Lincoln Mdl. Idealarc DC1000 welding pwr. source, flux tank, Lincoln Mdl. NA-3S sub-arc weld controller, digital boom spd. indicator, Weldhead flux box, pendant control, rotating column, S/N 010849, S/N 010848.

RANSOME MDL. 1212RF, new 1997, 12' horiz. travel, 12' vert. travel, rotating column base w/steel pad, sub-arc welding head, Lincoln Mdl. NA-3S DC sub-arc controls, S/N 6234004, Lincoln Mdl. DC1000 pwr. source, pendant control, S/N U1961201791.

RANSOME MDL. 1212RF, 15' horiz. travel, 12' vert. travel, rotating column base w/steel pad, Lincoln Mdl. NA-3S sub-arc weld controller, Lincoln Mdl. Idealarc DC1500 pwr. supply, weld head, flux tank and box, ride-on welders chair, S/N 6226771.

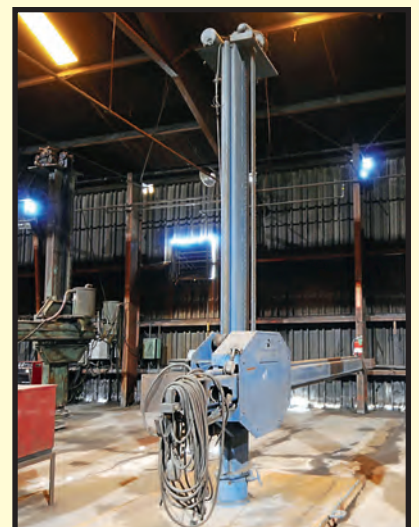
RANSOME MDL. 1212RF, new 1997, 12' horiz. travel, 12' vert. travel, rotating column base w/steel pad, Lincoln Mdl. NA-3S sub-arc weld controller, Lincoln Mdl. Idealarc DC1000 pwr. supply, S/N U1921006934, weld head, flux tank and box, ride-on welders chair, S/N 6234606.

PRESTON EASTIN MDL. MA1212HD, new 1999, 12' vert. travel, 12' horiz. travel, Lincoln Mdl. NA-3S sub-arc weld controller, Lincoln Mdl. Idealarc DC1000 pwr. supply, S/N AC845669, weld head, flux tank and box, S/N MC1212HD112.

PRESTON EASTIN MDL. 10X12, digital boom spd. indicator, rotating column w/sq. steel base, variable spd., pendant control, S/N N.A.

PRESTON EASTIN MDL. 12X12, rotating column w/sq. steel base, sub-arc welding head, Lincoln Mdl. NA-3S weld controllers.

PRESTON MDL. 6X6, partial weld controls, rotating column w/sq. steel base.



PRESTON EASTIN WELDING MANIPULATOR



BOWERS 60 T. POWER TURNING ROLL SET



PANDJIRIS 34 T. POWER TURNING ROLL SETS



PANDJIRIS 34 T. POWER TURNING ROLL SETS



RANSOME 15 T. POWER TURNING ROLL SET



PRESTON EASTIN POWER TURNING ROLL CARTS



POWER TURNING ROLL CARTS

POWER TURNING ROLL SETS

(2) BOWERS APPROX. 60 T. CAP. POWER TURNING ROLL SETS, 18" dia. x 6" triple rubber tires w/overload discs, H.D. right angle gear box design, adj. centers from 26" to 82", pendant control.

(3) PANDJIRIS 34 T. CAP. MDL. PR100 POWER TURNING ROLL SETS, 100,000-lb. turning cap., 20" x 5" rubber tires, 3 HP, variable spd., 12"-21" dia. cap., pendant control, S/N 41-0668-1.

PANDJIRIS 34 T. CAP. MDL. PR100 POWER TURNING ROLL SET, 100,000-lb. turning cap., fixed centers for pipe turning, w/idler roll, S/N 41-0668-2.

PANDJIRIS APPROX. 34 T. CAP. POWER TURNING ROLL SET, 10" x 20" rubber tires, variable spd. drive, pendant control w/idler, adj. centers.

RANSOME APPROX. 15 T. CAP. POWER TURNING ROLL SET, 20" dia. x 7" rubber tires, variable spd. drive, on roller cart.

(2) WEBB APPROX. 5 T. CAP. POWER TURNING ROLL SET, 12" dia. x 3"W. quadruple wheel design.

ARONSON 5 T. CAP. POWER TURNING ROLL SET, 12" dia. x 4" rubber tires w/overload discs, fixed wheel center, on roller cart, 47" pitch V rail set.

(4) PRESTON EASTIN 5 T. CAP. MDL. 1PA41CU5 POWER TURNING ROLL SETS, new 1999, mtd. to pwrdr. roller cart, approx. 78" track gauge, pendant control, adj. centers.

CUSTOM APPROX. 5 T. CAP. SELF-CENTERING POWER TURNING ROLL SET, w/idler and pendant control.

RANSOME 5 T. CAP. MDL. 4A1RR IDLER ROLL SET, dual 15" x 2-1/2" rubber tires, adj. centers.

(5 SETS-10 PC.) SHOP FABRICATED/CUSTOM APPROX 5 T. CAP. IDLER STANDS, 14" dia. x 4" rubber wheels, 25" wheel centers.

At the Premises of

K-2 PIPE & STEEL, LLC

(Formerly LA Barge & MRC Global Facility)

1300 NORTH LA BARGE AVENUE

WAGONER, OKLAHOMA 74467

(See Directions on Back Page)

AUCTION:
TUESDAY, APRIL 10
10:00 A.M.

INSPECTION:

Monday, April 9,
9:00 A.M. to 4:00 P.M.
& Morning of Sale

On-Site Bidding in Wagoner,
Oklahoma or Bid Via Webcast
at BidSpotter.com



PRESTON EASTIN POWER TURNING ROLLS



PRESTON EASTIN POWER TURNING ROLLS



**2
AVAILABLE**

CUSTOM POWERED FIT-UP ROLL SET



RANSOME 10,000-LB. CAP. WELDING POSITIONER



WORTHINGTON 25,000-LB. CAP. WELDING POSITIONERS



MILLER AND LINCOLN WELDERS UP TO 100 AMP CAP.



LARGE QUANTITY OF SUB-ARC WELDING WIRE

PLANT & MACHINERY INC. APPRAISAL DIVISION

Confidential Industrial Machinery & Equipment Appraisals
Call **1-800-282-8466**

**ARE YOU SELLING YOUR PLANT?
CALL 1-800-282-8466 FOR A
CONFIDENTIAL CONSULTATION**

At the Premises of
K-2 PIPE & STEEL, LLC
(Formerly LA Barge & MRC Global Facility)
**1300 NORTH LA BARGE AVENUE
WAGONER, OKLAHOMA 74467**

(See Directions on Back Page)

**AUCTION: TUESDAY,
APRIL 10 • 10:00 A.M.**

**On-Site Bidding in
Wagoner, Oklahoma
or Bid Via Webcast at**

BidSpotter.com

POWERED FIT-UP ROLLS

CUSTOM POWER FIT-UP ROLL, 24" roll centers, 158" x 14" roll dia., (3) sets of rolls, 40' overall length, sgl. end drive, right angle gear boxes,.

CUSTOM POWERED FIT-UP ROLL, 28" and 38" adj. centers, 84"L. x 12" dia. rolls, (2) independent pwr. drives, 33' ttl. length, (5) roll sections.

WELDING POSITIONERS

RANSOME 10,000-LB. CAP. MDL. 100P, S/N 216337.

(2) WORTHINGTON 2,500-LB. CAP. SIZE 25P, w/55" sq. platen, w/32" sq. platen and 3-jaw chuck, S/N 56690, S/N 55766.

SHOP FABRICATED/CUSTOM 500-LB. CAP., 24" dia. rd. platen.

MIG WELDERS

(6) MILLER MDL. CP300, 300 amps @ 32 v. rated output, 100% duty cycle, roller cart, (1) w/Miller Mdl. S54A wire feeder, (5) w/Miller Mdl. S60 wire feeder.

(4) MILLER MDL. CP302, 300 amps @ 32 v. rated output, 100% duty cycle, Miller S60 wire feeder, on portable cart, S/N LB102949, S/N KJ068445, S/N's N.A.

ARC WELDERS

(6) LINCOLN MDL. IDEALARC DC1000, 1,000 amps @ 44 v. rated output, 100% duty cycle, Air Arc welding leads, S/N U1050310945, S/N U1030304492, S/N U1020800251, S/N U1981205739, S/N U197091361, S/N U1961201781.

(3) HOBART MDL. MEGA MIG 650.

MILLER MDL. GOLDSTAR 452, 450 amps @ 38 v. rated output, 60% duty cycle, DC stick welding leads, S/N LH400637C.

MILLER MDL. DELTAWELD 452, Miller Mdl. S60 wire feeder, S/N KG113500.

(2) MILLER MDL. MP45E, 450 amps @ 38 v. rated output.

(5) LINCOLN MDL. IDEALARC 250, welding leads and stand.

(2) AIRCO MDL. 2.5DTR-224A DC, 250 amps @ 35 v. rated output, 100% duty cycle.

WELDING WIRE & FLUX.

LINCOLNWELD 1/8" MDL. L-50 WELDING WIRE, (54) boxes per pallet, on (7) pallets; **LINCOLN MDL. L9807-SUG001 WELDING FLUX**, (64) bags per pallet, on (3) pallets.



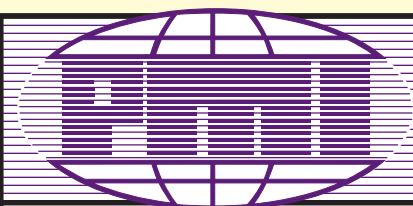
LINDE PLATE EDGE BURNING MACHINE



W.F. WELLS 24" x 24" HORIZ. BANDSAW



INGERSOLL RAND VSD 150 HP ROTARY SCREW AIR COMPRESSOR



AUCTION

INSPECTION: Monday, April 9, 9:00 A.M. to 4:00 P.M. & Morning of Sale

PLATE EDGE BURNING MACHINE

LINDE, 40' max. burning length, dry type fabricated cone table, (2) cutting saddles w/oxy. fuel cutting heads.

SEMI-AUTOMATIC HORIZONTAL BANDSAW

W.F. WELLS MDL. QJ-24, adj. blade tension, hyd. outboard clamp, H.D. infeed/outfeed roller conveyor, 24" sq. cap., S/N A170Q16849.

ROTARY SCREW AIR COMPRESSORS

INGERSOLL RAND MDL. R110N NIRVANA VSD, new 2011, 150 HP variable spd. motor, 145 PSIG max. discharge pressure, air cooled, S/N VN1227U11320.

INGERSOLL RAND MDL. PA125V, 125 HP motor, air cooled, separate cooler unit, S/N 97179U77833.

GARDNER DENVER MDL. ESNE-EAOPNB, 125 HP motor, air cooled, skid mtd., S/N 735403 (currently not in operation).

SAND TOWER & BLAST SYSTEM

FABRICATED STEEL APPROX. 5 T. CAP., (2) blast pots, blast hose.

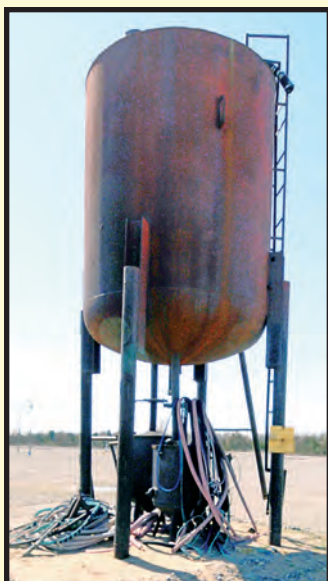
PISTON PUMPS

KERR MDL. KM3250 MUSTANG, 10,000 PSI @ 1" plunger, 8,400 PSI @ 1-1/4" plunger, 40 HP motor, skid mtd., S/N 852B.

KERR MDL. 3M3250 MUSTANG, 2,500 PSI @ 1" plunger, approx. 25 HP drive motor, high pressure hoses and controls, skid mtd., used for hydrostatic testing, S/N 9473.

MISCELLANEOUS SHOP & WAREHOUSE EQUIPMENT

WIDE SELECTION OF PEDESTAL FANS, 16", 18" and 20" dia.; (2) PHOENIX DRY ROD TYPE 300 ROD OVENS; APPROX. (15) LPG HEATERS; DAYTON INFRARED GAS HEATERS; ELITE STEAM CLEANER w/roller cart base; KOIKE CIRCULAR PIPE CUTTER w/chain track; BUG-O MDL. HOB-O CIRCULAR FLAME CUTTING UNIT; BUG-O GO-FER III TRACH TORCH w/large assortment of track; BUG-O TRACK TORCH; WIDE ASSORTMENT OXY./AC. CUTTING TORCHES; KOIKE MDL. IK-12 TRACK TORCH w/track; 48" DIA. CIRCULAR BURNING SADDLE; INGERSOLL RAND 6" RIGHT ANGLE GRINDERS; PNEUMATIC CHISELS; PNEUMATIC STRAIGHT GRINDERS; SIOUX AND INGERSOLL RAND H.D. IMPACT WRENCHES up to 1" drive.



SAND TOWER AND BLAST POTS



PNEUMATIC POWER TOOLS



KERR 10,000 PSI PISTON PUMP



HUGE QTY. OF REPAIR PARTS AND MAINTENANCE PARTS FOR THIS FACILITY, incl.: bearings, gears, electrical contactors, relays, switches, new wire on rolls, pipe fittings, conduit fittings and fasteners.



KALMAR 55,000-LB. CAP. FORKLIFT



TAYLOR 33,000-LB. CAP. DIESEL FORKLIFT



CASE RUBBER TIRED LOADER W/FORKS



GALION MDL. 118 ROAD GRADER

FORKLIFTS

KALMAR 55,000-LB. CAP. MDL. DC25, new 1989, diesel pwr'd., 55,000-lb. cap. @ 48" L.C., 133"/128" mast, 96" forks, solid tires, fork positioner, approx. 13,500 H.O.M.

TAYLOR BIG RED 33,000-LB. CAP MDL. THD-330M, diesel pwr'd., 2-stage mast, 33,000-lb. cap. @ 24" L.C., 25,575-lb. cap. @ 36" L.C., 180" max. lift, 96"L. forks, dual front pneu. tires, side shift, 6,656 H.O.M., S/N S-T5-28175.

HYSTER 25,000-LB. CAP. MDL. H250E, Detroit diesel engine, 24,750-lb. cap. @ 24" L.C., 22,100-lb. cap. @ 30" L.C., 146" max. lift, 96"L. forks, dual front pneu. tires, S/N B0077P0-8586V (forklift currently has engine problems and requires repair).

CASE MDL. 721B RUBBER TIRED LOADER W/FORKS, new 1998, includes bucket, engine runs, tires good, glass good, (needs transmission repair).

TOYOTA 3,000-LB. CAP. MDL. 6FGCU25, LP pwr'd., 3,000-lb. cap. @ 24" load center, 189" max. lift, side shift, cushion tires, dock lights, S/N 74852.

ELECTRIC SELF-PROPELLED BOOM LIFT

JLG MDL. 40 ELECTRIC Z-BOOM STYLE, 40' max. platform ht., 20'-6" max. reach, 500-lb. basket cap., 48 v. battery, 2,718 H.O.M., S/N 018372.

ROAD GRADER

GALION MDL. 118 SERIES B, adj. scarifier.

FREE STANDING PEDESTAL JIB CRANE

RELIABLE 1 T. X APPROX. 16' REACH, approx. 10' ht. under, Yale 1 T. cap. elec. chain hoist.

CARRY DECK CRANE

BRODERSON 26,000-LB. CAP. MDL. RTR1601AS, 6' boom radius, S/N 150H (crane is currently inoperable).

MATERIAL HANDLING EQUIPMENT

PLATE LIFTING CHAINS; PLATE CLAMPS up to 3"; **MULTI-LEG CHAINS; SLINGS; HEAVY BRAIDED STEEL SLINGS; HOOKS.**



1 T. FREE STANDING JIB CRANE

PLANT & MACHINERY INC. APPRAISAL DIVISION

Confidential Industrial
Machinery & Equipment
Appraisals

Call **1-800-282-8466**

**ARE YOU SELLING
YOUR PLANT?
CALL 1-800-282-8466
FOR A CONFIDENTIAL
CONSULTATION**



JLG SELF-PROPELLED BOOM LIFT

**On-Site Bidding in Wagoner, Oklahoma
or Bid Via Webcast at BidSpotter.com**

FOR SALE OR LEASE

FULLY CRANED MANUFACTURING FACILITY ON RAIL

1300 NORTH LABARGE AVENUE

Wagoner, Oklahoma 74467

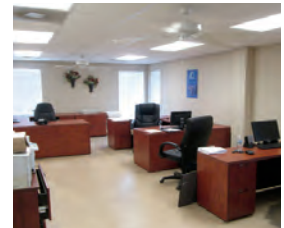


*Source: Owner



PROPERTY HIGHLIGHTS

- + 35± Acre Fully Compacted Site with 800' Rail Spur (Expandable to 2,000')
- + Former Rolled to Welded Pipe Operation with X-Ray Booths & Six Oversized Drive-In Doors
- + 10 Crane Systems – Two (30T), Two (15T), Two (10T), Two (7.5T), One (3T) & One (2T) plus Two Gantry Cranes Over Future Rail Line; 19'–44' Clearance; 20'–22' Hook Height
- + 1,500 Amps (480V/3 Phase); Compressed Air & Gas Lines Throughout with 20± Welding Stations



CONTACT US

SHAWNA HALE, CCIM

+1 918 392 7251

shawna.hale@cbre.com

JOHN WATCHOUS

+1 918 392 7216

john.watchous@cbre.com

© 2018 CBRE, Inc. All rights reserved. This information has been obtained from sources believed reliable, but has not been verified for accuracy or completeness. You should conduct a careful, independent investigation of the property and verify all information. Any reliance on this information is solely at your own risk.

www.cbre.us/tulsa

CBRE

*****ITEMS LOCATED
OFF-SITE AND WILL BE
SOLD BY PHOTO AT
K2 AUCTION IN
WAGONER, OKLAHOMA*****

The Items on This Page Are Located At:

INTERNATIONAL PIPE & SUPPLY

**3300 ALUMA VALLEY DRIVE
OKLAHOMA CITY, OKLAHOMA 73121**



CATERPILLAR 33,000-LB. CAP. FORKLIFT



NASCO 14,000-LB. CAP. FORKLIFT

OKLAHOMA CITY INSPECTION:

Monday–Friday,
April 2–6,
& Monday, April 9,
From 9:00 A.M.
to 3:00 P.M.
Appointment
not necessary.
Go to receptionist.

**AUCTION:
TUESDAY,
APRIL 10
10:00 A.M.**



CATERPILLAR 20,000-LB. CAP. FORKLIFT

FORKLIFTS

CATERPILLAR 33,000-LB. CAP. MDL. DP150, new 1995, approx. 5,000 H.O.M., no leaks, body in good condition, mast, rams and forks good. (needs transmission repair) (sold by photo – located offsite).

CATERPILLAR 20,000-LB. CAP. MDL. V200C, new 1992, 11,500 H.O.M., mast appears in good shape, no leaks (currently needs engine repair, tires, battery) (sold by photo – located offsite).

NASCO 14,000-LB. CAP., new 2002, engine starts and runs, 9,189 H.O.M. (needs transmission work, rear tires are bad) (sold by photo – located offsite).

DON'T MISS THIS SALE!

**On-Site Bidding in
Wagoner, Oklahoma
or Bid Via Webcast at
BidSpotter.com**



CASE MDL. 821B RUBBER TIRED BUCKET LOADER

RUBBER TIRED BUCKET LOADERS

CASE MDL. 821C, new 2000, bucket, 9,245 H.O.M., runs okay, good tires. (sold by photo – located offsite).

CASE MDL. 821B, new 1998, bucket, engine runs, tires fair, hours unknown, no leaks, (needs transmission repair) (sold by photo – located offsite).



CASE MDL. 821C RUBBER TIRED BUCKET LOADER

TRAILER

1987 LUFKIN 45'L. X 96"W., steel fabricated, dunnage rack, tires good/spring axle, needs some deck boards replaced (sold by photo – located offsite).



ITEMS LOCATED OFF-SITE AND WILL BE SOLD BY PHOTO AT K2 AUCTION IN WAGONER, OK

The Items on This Page Are Located At:

INTERNATIONAL PIPE & SUPPLY

3300 ALUMA VALLEY DRIVE
OKLAHOMA CITY, OKLAHOMA 73121

OKLAHOMA CITY INSPECTION:

Monday-Friday, April 2-6, &
Monday, April 9, From
9:00 A.M. to 3:00 P.M.
Appointment not necessary.
Go to receptionist.



CUSTOM 20" HYDRAULIC PIPE STRAIGHTENER



CUSTOM 6" HYDRAULIC PIPE STRAIGHTENER

HYDRAULIC PIPE STRAIGHTENERS

CUSTOM 20", up to 20" pipe cap., hydraulic, 10 HP/240 v. elec. motor, operational (sold by photo – located offsite).

CUSTOM 6", up to 6" pipe, hydraulic (needs repair) (sold by photo – located offsite).

PIPE CLEANING MACHINES

PERRAULT 20", up to 20" O.D., gasoline pwr'd. (needs repair) (sold by photo – located offsite).

CRC 6", gasoline pwr'd. (needs repair) (sold by photo – located offsite).



PERRAULT 20" PIPE CLEANING MACHINE



CRC 6" PIPE CLEANING MACHINE

PORTABLE AIR COMPRESSOR

ATLAS COPCO, new 1999, 4,596 H.O.M., trailer mounted, runs good. (sold by photo – located offsite).



WATER TRUCKS

MDL. P2000 MILITARY TYPE, 1,000 gal. cap., ODO reads: 32,495 miles (needs repair, battery, tires) (sold by photo – located offsite). NO TITLE – YARD USE ONLY.

FORD MDL. F500, 1,000 gal. cap., ODO: 35,271 miles (currently in need of repair) (sold by photo – located offsite) NO TITLE – YARD USE ONLY.



PLANT & MACHINERY INC.

AUCTIONEERS • APPRAISERS • LIQUIDATORS • REAL ESTATE

P.O. Box 218568,
Houston, TX 77218-8568

DATED MATERIAL – PLEASE DELIVER

HUGE PIPE FABRICATING FACILITY CLOSING

Featuring: Plate Rolls Up to 20'W. Cap. & Up to 2.5" Thick; O.D. & I.D. Pipe Welding Systems; Gas Fired Car Bottom Furnace; Side Beam Welder; Manipulators; Turning Roll Sets; Fit-Up Rolls; Positioners; (30+) Welders; Plate Edge Burning System; Wire & Flux; 24" Bandsaw; Sand Blast; Air Compressors Up to 150 HP; Forklifts Up to 55,000-Lb. Cap.; Cranes; Grader; Boom Lift; Shop Tools; Huge Qty. of M.R.O. Items; Much More!

PLUS Items in OK City to Be Sold by Photo (See Pgs. 10 & 11) and Real Estate in Wagoner OK for Sale by Private Negotiation (See Pg. 9).



PUBLIC INVITED

AUCTION: TUESDAY, APRIL 10 • 10:00 A.M.



**ATTENTION: PLANT MANAGER
OR EQUIPMENT BUYER**

Presorted
First Class Mail
U.S. Postage
PAID
Eugene, Oregon
Permit No. 17

LOCATION

The nearest major airport is in Tulsa, OK. Wagoner is approx. 45 minutes southeast of Tulsa.

LODGING

In addition to lodging in Wagoner, various hotels are available in Broken Arrow (30 minutes away towards Tulsa), and in Muskogee (25 minutes south of Wagoner).

PLANT & MACHINERY INC. APPRAISAL DIVISION

Confidential Industrial Machinery & Equipment Appraisals
Call **1-800-282-8466**

UNABLE TO ATTEND?

Bid on-line in real time at **BidSpotter.com**

TO PARTICIPATE YOU MUST:

1. Register at www.BidSpotter.com. Use the link to BidSpotter on PMI's website calendar. **DO IT NOW.**

2. Either send wire transfer, or, overnight delivery service a cashier's check deposit in the amount of \$3,000 (U.S. Bidders) or \$10,000 (Foreign Bidders) to:
Plant & Machinery Inc.

1304 Langham Creek Drive, Suite 454, Houston, TX 77084

Wire transfer instructions can be found at pmi-auction.com

You must be registered and have your deposit in the hands of Plant & Machinery, Inc. at least 24 hours prior to the start of the auction. Failure to register and/or failure to send your deposit to Plant & Machinery, Inc. may disqualify you from bidding. **DON'T WAIT.**

If you need assistance, don't hesitate to call (713) 691-4401.

ALL WEBCAST BIDS ARE SUBJECT TO AN 18% BUYER'S PREMIUM.

FINANCE YOUR AUCTION PURCHASE

Conserve Your Cash &
Increase Your Bidding Power

**AuctionLeaSe Provides
M&E Financing**

**With Approvals from
\$5,000 to \$999,000**

(800) 438-1470

Apply Online:

www.AuctionLease.com

PARTIAL TERMS & CONDITIONS

A 15% Buyer's Premium Will Apply On-site.

An 18% Buyer's Premium Will Apply to Webcast Bids. See Above Rules for Participation.

Everything will be sold to the highest bidder or bidders for cash in accordance with the auctioneer's Customary Terms of Sale, copies of which will be posted on the premises.

ALL PAYMENTS MUST BE MADE BY CASH, CASHIER'S CHECK, WIRE TRANSFER OR COMPANY CHECK WITH BANK LETTER GUARANTEEING PAYMENT TO PLANT & MACHINERY INC.

Here is an example of what your letter should be: *Mr. "Customer Name" is a customer of this bank. This bank will guarantee unqualified payment to PMI on the account listed herein up to the amount of \$_____. This letter is good until May 10, 2018.*

In default of payment of bills in full within the time therein specified, the Auctioneer in addition to all other remedies allowed by law, may retain all monies received as deposit or otherwise, as liquidated damages. All items must be removed by the time announced at the start of the sale.

Lots not paid for and/or removed within the time allowed may be resold at public or private sale without further notice, and any deficiency, together with all expenses and charge of resale, will be charged to the defaulting purchaser.

The buyer acknowledges that he or an agent has inspected all of the assets upon which he will be bidding and/or does purchase.

Buyer agrees to accept assets purchased **"AS IS," WITH "ALL FAULTS" AND "WITH REMOVAL AT BUYER'S RISK AND EXPENSE." THE AUCTIONEER EXPRESSLY DISCLAIMS ON THE**

PART OF THE AUCTIONEER AS AGENT AND THE SELLER, ANY WARRANTY AS TO FITNESS OR USABILITY OF ALL THE ASSETS, AND THE BUYER EXPRESSLY WAIVES ANY CLAIM IN RESPECT TO ANY POSSIBLE FUTURE USE OF ANY ASSET PURCHASED FOR ANY PURPOSE WHATSOEVER.

The buyer does hereby assume and does agree to indemnify and hold the auctioneer harmless from any future claim which shall pertain to the fitness or use of that asset as being purchased. Riggers, movers, electricians and buyers performing work at the Auction Site must provide PMI with evidence of insurance. The insurance coverage must be at a level acceptable to PMI and to the seller. PMI reserves the right to withdraw items, alter the order of the sale, accept bids from the seller, and group lots as it may deem appropriate. This auction may include consignment items.

Although all information has been obtained from sources deemed reliable, the auctioneer and seller make no warranty or guarantee, expressed or implied, as to the accuracy of the information herein contained, or contained in our catalog. It is for this reason that buyers should avail themselves of the opportunity to make inspection prior to the auction. Although it is not likely, auction sales are subject to cancellation or postponement. Kindly contact auctioneer prior to attendance.

These terms and conditions may be modified or supplemented by language in the catalog available at the sale site or by announcement at the start of the sale. Bidders should be attentive to those announcements and to the catalog language.