

EWALD
AUCTIONS

Lisc. RE Broker - AB3381 - AU1340

* E s t a t e *
O N - L I N E O N L Y

AUCTION

Opens: September 19 @ 1pm
AUCTION CLOSES: September 27 @ 6pm

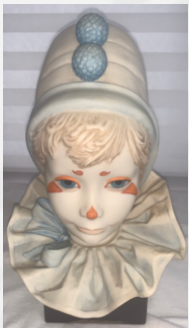
ASSETS LOCATED IN downtown Orlando, Florida

In order to settle the estate of Sallie L. Douglas, Ewald Auctions has been authorized to sell the following assets to the **HIGHEST BIDDER, REGARDLESS OF PRICE!!!**

Antique Furniture, Collectibles and other items

Antique Furniture and Accessories Collection

Dressers, dining table and chairs, glass front buffet, drop leaf table and tea cart, secretary desk, embroidered chairs and bench, glass ware, perfume bottles, mantle clock, mirrors and various artwork, and more...



407-275-6853
www.ewaldauctions.com

TERMS and CONDITIONS

- ALL items sell to the **HIGHEST BIDDER, REGARDLESS OF PRICE!**
- 15% ON-LINE Buyer's Premium.
- Everything sells on as "**AS IS, WHERE IS**" basis.
- Payment is in full immediately following the auction by MC, Visa, Amex or Discovery. Card on file with Proxibid will be charged at close of auction.
- Removal at buyer's expense by appointment ONLY.** Items in downtown Orlando, Florida.
- All items out by October 2 (NO Exceptions!)**
- Inspection by appointment ONLY.
- Go to Proxibid site for ALL Terms & Conditions.

