

MULTI PROPERTY **AUCTION** **April 21 @ 10 AM**

Sale Site: 845 E. 2nd St, Chase City VA (Benchmark Community Bank)

7 Properties ... 7 Great Opportunities



423 W. Sycamore St, Chase City
Mecklenburg County



823 N. Main St, Chase City
Mecklenburg County



245 Evergreen Rd, Clarksville VA
Mecklenburg County



3729 Henrico Rd, Buffalo Junction VA
Mecklenburg County

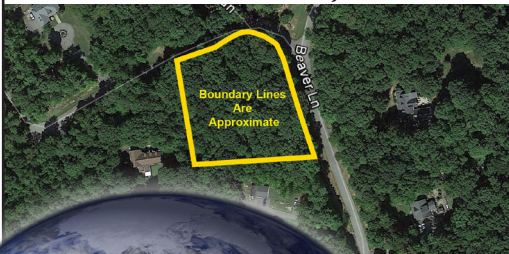


1620 Lee Ave, Victoria VA
Lunenburg County



6897 Double Bridges Rd, Victoria VA
Lunenburg County

Lot 33 Beaver Lane, Amelia VA
Amelia County



Additional information & preview dates available online!
Live On-Site Auction - Online Bidding Offered
www.countsauction.com

Sale Manager : Pete Ramsey 434-258 -6611

Full Terms Available Online. 10% Buyers Premium added to high bid(s) to determine contract sales price(s). 10% deposit due on the day of the auction with balance due at closing within 30 days.

When the bottom line counts

Talk to Counts

www.countsauction.com

**THE
COUNTS**
Realty & Auction Group
800-780-2991

APRIL 21 @ 10 AM

Sale Site: 845 E. 2nd St, Chase City VA (Benchmark Community Bank)
On-Site Auction with Online Bidding Offered

423 W. Sycamore St, Chase City
 Mecklenburg County



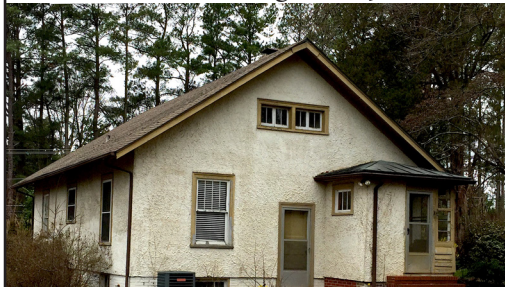
Previews: 4/5 & 4/14 3 PM to 4 PM

1,348', 3 BR, 1 BA

Home is currently being leased
 Great Investment Opportunity!

Directions: From E.2nd St & N.Main St., go
 S on N. Main to E. Sycamore St. - R onto E.
 Sycamore go .04 miles. Property is on the L

823 N. Main St, Chase City
 Mecklenburg County



Previews: 4/5 & 4/14 1 PM to 2 PM

1,037', 3 BR, 1 BA

HW floors throughout, partially
 renovated, detached shed

Directions: From E.2nd St & N.Main St., go
 N on N. Main for about 0.5 miles - house is
 on the R

245 Evergreen Rd, Clarksville VA
 Mecklenburg County



Previews: 4/5 & 4/14 11 AM to 12 PM

1,686', 3 BR, 1 BA, fenced yard
 great view of lake, HW floor
 throughout

Directions: From Rt 49 / 15 & Rt 58 go N
 on Rt 49 / 15 for 1.5 miles to Evergreen Rd.
 R - onto Evergreen, go 0.2 miles, house on L

3729 Henrico Rd, Buffalo Junction VA
 Mecklenburg County



Previews: 4/5 & 4/14 9AM to 10 AM

1,782', 3 BR, 2 BA, 1.54 acres.

Home has been remodeled, move in ready!
 Directions: From Rt 58 about 1 mile W of
 Clarksville, turn S onto Rt 871, go 0.7 miles
 to Rt. 727. Bear L onto Henrico Rd, go 1.5
 miles, property is on the R

1620 Lee Ave, Victoria VA
 Lunenburg County



Previews: 4/7 & 4/12 9AM to 10 AM

2,912', 3 BR, 1BA, HW Floors

Home needs extensive renovations
 Directions: From Main St, take 5th St for
 2 blocks to Lee Ave. The property is on the
 corner of Lee Ave and 5th St.

6897 Double Bridges Rd, Victoria VA
 Lunenburg County



Previews: 4/7 & 4/12 11AM to 12PM

1,716', 2 BR, 2.5 BA, 2.5 acres

Home HAS BEEN RENOVATED in 2018!
 Directions: From Victoria, take Rt 662, to
 NW. Go 3.8 miles on Rt. 662, L onto Rt 666
 (Mays Rd), go 1.5 miles on Rt. 626. Turn
 R onto Double Bridges Rd, go 0.2 miles.
 Property is on the L

Lot 33 Beaver Lane, Amelia VA
 Amelia County



Previews: 4/7 & 4/12 1PM to 2PM

2.010 building lot, Bridgeforth Mill

Wooded corner lot - great home site!
 Lot is part of the Bridgeforth Mill
 homeowners association. The annual HOA
 fees are \$176. www.bridgeforthmill.com
 for complete HOA documents

Directions: From Rt 360 & Rt 153, go
 S on Rt 153 for 5.0 miles to Rt 608. R
 onto Rt 608, go 0.6 miles to Beaver Ln.
 Turn R onto Beaver Ln, go 0.3 miles.
 Property is on the L



When the bottom line counts
Talk to Counts

Sale Manager :
 Pete Ramsey 434-258-6611