



PMI AUCTION

PLANT DOWNSIZING - BOILER REPAIR & REMANUFACTURING FACILITY

Featuring: Refurbished Boilers; New Burners & Parts Inventory from Maxon, Honeywell, Fireye, Kunkle & Others; Welding & Cutting Equipment; Pipe Threaders, Saws; Shop Support Tools; Forklifts; Ford F-350; Large selection of Used Boilers; MORE!

REMFG.
2015



ECLIPSE 350 HP STEAM BOILER



(4) INDUSTRIAL COMBUSTION BOILER BURNERS

Plant Downsizing, Selling Assets
for the Continuing Operations of

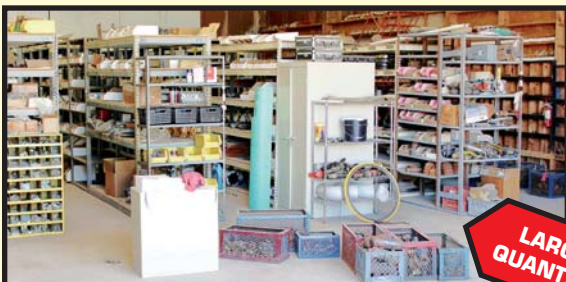
AMERICAN STEAM INC.

49 STEEL RD., WYLIE, TEXAS 75098

(See Directions on Back Page)

**AUCTION:
TUESDAY,
MAY 15
10:00 A.M.**

On-Site Bidding in Wylie, Texas or
Bid Via Webcast at BidSpotter.com



SAMPLE VIEW OF NEW PARTS INVENTORY

LARGE
QUANTITY

INSPECTION:

Monday, May 14,
9:00 A.M. to
4:00 P.M. &
Morning of Sale

BUYER'S PREMIUM:

**15% ON-SITE
18% WEBCAST**



(2) SULLAIR PORTABLE AIR COMPRESSORS



WIDE
SELECTION

< CLEAVER
BROOKS,
CONTINENTAL
AND TRANE
MURRAY STEAM
BOILERS

Read Partial
Terms and
Conditions
on Back Page
of Brochure

2006



MANITOU 8,000-LB. CAP., 974 H.O.M.
ROUGH TERRAIN FORKLIFT

Sale Conducted By:

PLANT & MACHINERY INC.

AUCTIONEERS • APPRAISERS • LIQUIDATORS • REAL ESTATE

Ron Moore, Texas Lic. #7314

HOUSTON • DALLAS • ST. LOUIS

Headquarters:

1304 Langham Creek Drive, Suite 454
Houston, Texas 77084

PHONE: (713) 691-4401

FAX: (713) 672-7905

E-MAIL: pmi@pmi-auction.com
WEBSITE: www.pmi-auction.com

**REMFG.
2015**



<
**ECLIPSE
350 HP
STEAM
BOILER**

>
**(4)
INDUSTRIAL
COMBUSTION
BOILER
BURNERS**



CONTINENTAL AND MOHAWK STEAM BOILERS



**CLEAVER BROOKS, CONTINENTAL AND TRANE MURRAY
STEAM BOILERS**



<
**SAMPLE
VIEW OF
MAXON
VALVES**

>
**FEED
TANKS,
750- AND
400-GALLON**



REFRACTORY AND INSULATION



SAMPLE VIEW OF VALVES



SAMPLE VIEW OF NEW PARTS INVENTORY

REFURBISHED STEAM BOILERS

ECLIPSE, remfg. 2015 and ready for service, 350 HP, 150 PSI, LPG pwr., Johnson burner, new Honeywell electrics, National Board No. 42240.

CONTINENTAL, remfg., ready for service, 350 HP, 165 PSI, LPG pwr., Honeywell electrics, National Board No. 10808.

MOHAWK, remfg., ready for service, 150 PSI, LPG pwr., Honeywell electrics, National Board No. 5828.

KEWANEE, remfg., ready for service, 70 HP, 150 PSI, LPG pwr., National Board No. 33590.

CLEAVER BROOKS, CONTINENTAL, TRANE MURRAY, and many more used boilers.

FIRETUBE BOILER BURNERS

(4) INDUSTRIAL COMBUSTION BOILER BURNERS, Mdl. D-42-P gas fired burner; **POWER FLAME BURNER MDL. C3-G-25**, natural gas fired, S/N 129992671.

NEW PARTS INVENTORY

HONEYWELL AIR PRESSURE SWITCHES AND GAS PRESSURE SWITCHES; CONTACTORS; PRESSURE CONTROLLER; FIREYE INVENTORY; KUNKLE VALVES; MAXON 2" 5000 VALVES; MAXON 1" 3TO-A1 VALVES; CLEVIS HANGERS; 2" AND 2-1/2" TUBE PLUGS; GASKETS; APOLLO BALL VALVES; VALVES; FLANGES; HEAVY DUTY 3,000 PSI FITTINGS; EMT CONDUIT; SCHEDULE 40 AND SCHEDULE 80 FITTINGS; HEAVY DUTY FITTINGS; REFRACTORY AND INSULATION.

RAW MATERIAL

A-FRAME RACKS OF PIPE AND TUBING THROUGHOUT YARD.

FEED TANKS

750-GALLON w/pumps and controls; **400-GALLON** w/pumps, no controls.

WELDING & CUTTING EQUIPMENT

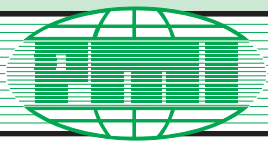
MILLER MDL. DIALARC HF WELDER, S/N JF922959; **MILLER MDL. BLUE STAR 2E WELDER**, S/N JH316359; **LINCOLN MDL. IDEALARC SP100 WELDER**; **JOBSMART PORT. PLASMA**, 125 amp. torch; **PHOENIX "DRY ROD" OVEN**; **PIPE BEVELING MACHINES**: Incl. H&M Mdl. 2C-20; H&M Mdl. C-8; MATHY Mdl. 35A; **MORE.**

SAWS

BUFFALO 7" VERT./HORIZ. BANDSAW; **STONE MDL. MSI PORTABLE MASONRY SAW**; **TARGET PORTASAW PORTABLE MASONRY SAW**; **MORE.**

PIPE THREADERS

RIDGID MDL. 535; **(2) RIDGID MDL. 1206 TRI-STAND**, w/assorted dies; **RIDGID MDL. 700 ELECTRIC HAND-HELD TYPE.**



AUCTION

**AUCTION: TUESDAY
MAY 15 • 10:00 A.M.**

**On-Site Bidding in Wylie, Texas or
Bid Via Webcast at BidSpotter.com**

INSPECTION:
Monday, May 14, 9:00 A.M. to 4:00 P.M.
& Morning of Sale

MISCELLANEOUS SHOP & WAREHOUSE EQUIPMENT

SCHMIDT SANDBLAST POT; BLAST MEDIA; ROPER WHITNEY CONNECTICUT MDL. U422 HAND BRAKE; CYCLONE MDL. 3000 PORTA COOL; (4) PORTABLE SHOP FANS; ENGINE HOIST; CHAIN HOIST; DAYTON CONTRACTORS TOOLBOX; JOBOX CONTRACTORS TOOLBOX; LARGE DAYTON CONTRACTORS TOOLBOX; ELECTRIC TOOLS; POWER TOOLS; CUT-OFF SAWS; MAGNETIC BASE DRILLS; STRAIGHT ANGLE GRINDERS; BANDSAW; EMT CONDUIT BENDERS; (2) HILMAN MACHINERY SKATE SETS; JACK STANDS; ROLLER STANDS; D.R. CHIPPER WOOD CHIPPER; TORO LAWNMOWER; CHAIN SAW; (2) WEED EATERS; TROY BILT 8-3/4 HP PRESSURE WASHER; (2) GAST FRESH AIR BREATHING SYSTEMS; (2) 20 T. H-FRAME PRESSES, PORTABLE HEATERS; REDDY MDL. WP0610809, DAYTON, AND (2) DYNA-GLO PRO; RICE HYDROSTATIC TEST PUMPS; COIL SHEET DISPENSER; MORE!

PORTABLE AIR COMPRESSORS

(2) SULLAIR, 185 CFM, 100 PSI, John Deere Md. 185JDU diesel engine, skid mounted, S/N 200608240071 (324 H.O.M.), S/N 200608230076 (1,058 H.O.M.).

RECIPROCATING AIR COMPRESSORS

SANBORN, 5 HP motor vert.; ATLAS COPCO AND OTHER PORTABLE ELECTRICS.

ROUGH TERRAIN FORKLIFT

MANITOU 8,000-LB. CAP. MDL. M40-2, new 2006, 2-stage mast, 122" O.H.L., 171" M.F.H., side shift, 6' long forks, diesel engine, 974 H.O.M.

FORKLIFTS

HYSTER 12,000-LB. CAP. MDL. S120FT, new 2010, LPG, 3-stage mast, 208" lift ht., cushion tires, 48" forks, S/N G004V05229J.

YALE 3,000-LB. CAP. MDL. GLP030, new 2002, LPG, 2-stage mast, 84" max. lift ht., pneu. style cushion tires, S/N B810N02411Z.

YALE 3,000-LB. CAP. MDL. GLP030, new 2000, LPG, 2-stage mast, 84" max. lift ht., pneu. style cushion tires, S/N A810N05876X.

PICKUP TRUCK

2008 FORD F-350 "SUPER DUTY XL", Triton V10 6.8 liter gas engine, auto. trans., toolbox, ODO: 98,283 miles, VIN 1FTWF30Y28EC18164.

OFFICE FURNITURE

DESKS, CHAIRS, FILING CABINETS.



MANITOU 8,000-LB. CAP.
ROUGH TERRAIN FORKLIFT



HYSTER 12,000-LB. CAP. FORKLIFT



2008 FORD F-350 SUPER DUTY XL
PICKUP TRUCK



SCHMIDT
SANDBLAST POT



SAMPLE VIEW OF WELDERS



20 T. H-FRAME PRESSES



CONTRACTORS TOOL BOXES



(2) SULLAIR PORTABLE AIR COMPRESSORS



PIPE BEVELING MACHINES



SAMPLE VIEW OF SHOP EQUIPMENT



SAMPLE VIEW OF RIDGID PIPE THREADERS

PLANT & MACHINERY INC.

AUCTIONEERS • APPRAISERS • LIQUIDATORS • REAL ESTATE

P.O. Box 218568
Houston, TX 77218-8568

DATED MATERIAL – PLEASE DELIVER



PUBLIC INVITED

AUCTION: TUESDAY, MAY 15 • 10:00 A.M.



PLANT DOWNSIZING – BOILER REPAIR & REMANUFACTURING FACILITY

**Featuring: Refurbished Boilers;
New Burners & Parts Inventory from
Maxon, Honeywell, Fireye, Kunkle &
Others; Welding & Cutting Equipment;
Pipe Threaders, Saws; Shop Support
Tools; Forklifts; Ford F-350;
Large selection of Used Boilers; MORE!**

**ATTENTION: PLANT MANAGER
OR EQUIPMENT BUYER**

Presorted
First Class Mail
U.S. Postage
PAID
Eugene, Oregon
Permit No. 17



PMI AUCTION

WYLIE, TEXAS

DIRECTIONS

FROM DALLAS LOVE FIELD AIRPORT: Exit airport using Herb Kelleher Way. Turn left onto W Mockingbird Lane and proceed approx. one mile. Merge onto Dallas North Tollway N and proceed approx. 17 miles. Take the exit for I-635 E and proceed approx. 2 miles. Take Exit 19A for US-75 N towards McKinney and proceed approx. 6 miles. Take Exit 28B and merge onto President George Bush Turnpike E. Take the Renner Road exit and merge onto TX-190. Turn left on Renner Road and then left onto Murphy Road. Turn right onto E Farm to Market Road 544 and proceed approx. one mile. Turn right onto Regency Drive and immediately turn left onto Steel Road. Proceed to auction site on the right, 49 Steel Road, Wylie, Texas 75098.

LODGING

La Quinta Inn & Suites(469) 969-0911
2210 W, FM 544, Wylie, Texas 75098

UNABLE TO ATTEND?

Bid on-line in real time at **BidSpotter.com**
TO PARTICIPATE YOU MUST:

1. Register at www.BidSpotter.com. Use the link to BidSpotter on PMI's website calendar. **DO IT NOW.**
2. Either send wire transfer, or, overnight delivery service a cashier's check deposit in the amount of \$3,000 (U.S. Bidders) or \$10,000 (Foreign Bidders) to:
Plant & Machinery Inc.

1304 Langham Creek Drive, Suite 454, Houston, TX 77084
Wire transfer instructions can be found at pmi-auction.com
You must be registered and have your deposit in the hands of Plant & Machinery, Inc. at least 24 hours prior to the start of the auction. Failure to register and/or failure to send your deposit to Plant & Machinery, Inc. may disqualify you from bidding. **DON'T WAIT.**
If you need assistance, don't hesitate to call (713) 691-4401.
ALL WEBCAST BIDS ARE SUBJECT TO AN 18% BUYER'S PREMIUM.

FINANCE YOUR AUCTION PURCHASE

Conserve Your Cash & Increase
Your Bidding Power

**AuctionLea\$e Provides
M&E Financing**

**With Approvals
from \$5,000
to \$999,000**

(800) 438-1470

Apply Online:
www.AuctionLease.com

A 15% Buyer's Premium Will Apply On-site. An 18% Buyer's Premium Will Apply to Webcast Bids. See Above Rules for Participation.

Everything will be sold to the highest bidder or bidders for cash in accordance with the auctioneer's Customary Terms of Sale, copies of which will be posted on the premises.

ALL PAYMENTS MUST BE MADE BY CASH, CASHIER'S CHECK, WIRE TRANSFER OR COMPANY CHECK WITH BANK LETTER GUARANTEEING PAYMENT TO PLANT & MACHINERY INC.

Here is an example of what your letter should be: *Mr. "Customer Name" is a customer of this bank. This bank will guarantee unqualified payment to PMI on the account listed herein up to the amount of \$_____.* This letter is good until June 15, 2018.

In default of payment of bills in full within the time therein specified, the Auctioneer in addition to all other remedies allowed by law, may retain all monies received as deposit or otherwise, as liquidated damages. All items must be removed by the time announced at the start of the sale.

Lots not paid for and/or removed within the time allowed may be resold at public or private sale without further notice, and any deficiency, together with all expenses and charge of resale, will be charged to the defaulting purchaser.

The buyer acknowledges that he or an agent has inspected all of the assets upon which he will be bidding and/or does purchase.

Buyer agrees to accept assets purchased **"AS IS," WITH "ALL FAULTS" AND "WITH REMOVAL AT BUYER'S RISK AND EXPENSE."** THE AUCTIONEER EXPRESSLY DISCLAIMS ON THE PART OF THE AUCTIONEER AS AGENT AND THE SELLER, ANY WARRANTY AS TO FITNESS OR

USABILITY OF ALL THE ASSETS, AND THE BUYER EXPRESSLY WAIVES ANY CLAIM IN RESPECT TO ANY POSSIBLE FUTURE USE OF ANY ASSET PURCHASED FOR ANY PURPOSE WHATSOEVER.

The buyer does hereby assume and does agree to indemnify and hold the auctioneer harmless from any future claim which shall pertain to the fitness or use of that asset as being purchased. Riggers, movers, electricians and buyers performing work at the Auction Site must provide PMI with evidence of insurance. The insurance coverage must be at a level acceptable to PMI and to the seller. PMI reserves the right to withdraw items, alter the order of the sale, accept bids from the seller, and group lots as it may deem appropriate. This auction may include consignment items.

Although all information has been obtained from sources deemed reliable, the auctioneer and seller make no warranty or guarantee, expressed or implied, as to the accuracy of the information herein contained, or contained in our catalog. It is for this reason that buyers should avail themselves of the opportunity to make inspection prior to the auction. Although it is not likely, auction sales are subject to cancellation or postponement. Kindly contact auctioneer prior to attendance.

These terms and conditions may be modified or supplemented by language in the catalog available at the sale site or by announcement at the start of the sale. Bidders should be attentive to those announcements and to the catalog language.