



INDUSTRIAL ASSETS

REAL ESTATE • FINANCE • MACHINERY • AUCTIONS
industrialassets.com

**GLOBAL
ONLINE ONLY
LIVE WEBCAST**
(NO ONSITE BIDDING)

AUCTION

AUCTION: Thursday, June 13th, 2019, Beginning at 9:00am PDT

PREVIEW LOCATION: 2100 Huntington Drive, Fairfield, CA 94533

PREVIEW: Mon. (6/10), Tue. (6/11) & Wed. (6/12), 9am to 4pm or By Appt.

DURACITE®
CUSTOM COUNTERTOPS

ONE OF CALIFORNIA'S LARGEST NATURAL STONE COUNTERTOP FABRICATORS, MIA ACCREDITED



Kuka KR 210 RoboCut 6-Axis Robotic Cutting System



Park Industries Velocity Decorative Edge Shaper & Polisher



Park Industries Yukon CNC Bridge Saw



Anderson CABMAXX/TC CNC Router

Complete Photos & Lot Listings at www.biditup.com

BIDITUP
BIDITUP AUCTIONS WORLDWIDE

818.508.7034
biditup.com

Maynards
SINCE 1902

248.569.9781
maynards.com

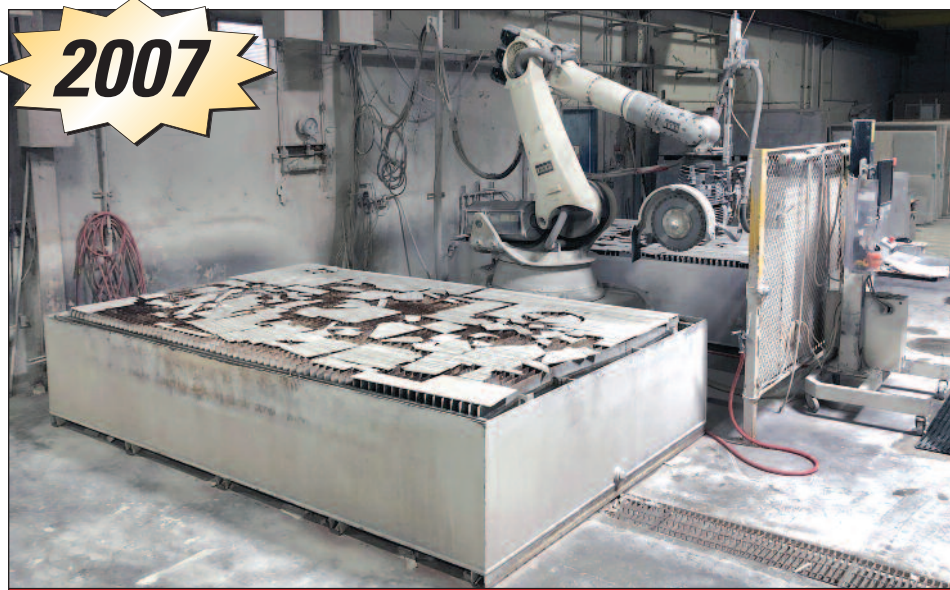
**MACHINERY
MAX**

209.988.4667
machinerymax.com

ROBOTIC CUTTING SYSTEM

- 2007 KUKA KR 210 ROBOCUT 6-AXIS ROBOTIC CUTTING SYSTEM, Direct-Drive Saw (20" Max Blade Size), Abrasive Waterjet, Robot Mdl. KR 210 L150-2 F 2000, PC Operated Control, (2) 7' x 12' Cutting Tables

2007



Kuka KR 210 RoboCut 6-Axis Robotic Cutting System

EDGE SHAPERS & POLISHERS

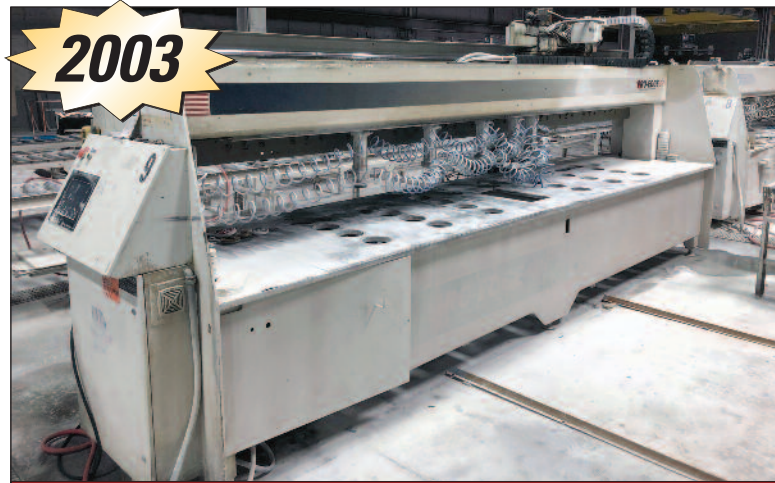
- 2006 PARK INDUSTRIES VELOCITY DECORATIVE EDGE SHAPER & POLISHER, Siemens Simatic Panel Touch Control
- 2003 PARK INDUSTRIES PRO-EDGE III AUTOMATIC EDGE SHAPER & POLISHER, Mdl. PEIII wo/TT, Touchscreen Control
- 1998 PARK INDUSTRIES PRO-EDGE II EDGE SHAPER & POLISHER, Mdl. PE-II, Maple Systems PLC Control
- 2004 COMANDULLI SYNTHESIS CONTINUOUS EDGE POLISHER, Mdl. PNCT100 SX
- SASSO MECCANICA TE RCM INLINE EDGE POLISHER, Multi-Head, Sasso Meccanica PLC Control
- 1999 MARMO MECCANICA LCV 711 M FLAT EDGE / BACK SPLASH POLISHER
- PARK INDUSTRIES RADIAL ARM POLISHER
- PARK INDUSTRIES WIZARD II RADIAL ARM POLISHER
- F-ZAMBON RADIAL ARM POLISHER, Mdl. LC 2000

2006



Park Industries Velocity Decorative Edge Shaper & Polisher

2003



Park Industries Pro-Edge III Automatic Edge Shaper & Polisher



Sasso Meccanica TE RCM Polisher



Marmo Meccanica LCV 711 M Polisher



2 Available

Park Industries Radial Arm Polisher

CNC BRIDGE SAWS

- (2) 2003 PARK INDUSTRIES YUKON CNC BRIDGE SAWS, 24" Max Blade Size, 20 HP, 12' x 12' Working Dimensions, Siemens Simatic Panel Control, Rotary Table, w/6' x 10' Table
- 2000 PARK INDUSTRIES JAGUAR CNC BRIDGE SAW, 24" Max Blade Size, 25 HP, 12' x 12' Working Dimensions, GE Fanuc Quickpanel II Control, Rotary Table, w/6' x 10' Table



2 Available

Park Industries Yukon CNC Bridge Saw



Park Industries Jaguar CNC Bridge Saw

Complete Photos & Lot Listings at
biditup.com

TO SCHEDULE AN AUCTION OR APPRAISAL CALL 818.508.7034

CNC ROUTERS

- **2006 ANDERSON CABMAXX/TC CNC ROUTER**, 15 HP HSK63-F Router Head, 24000 Max RPM, 12 ATC, Table: 63" x 145", 12 ATC, X=79", Y=161", Z=14", Fanuc CNC PC Front System 210i w/PLC Control, Dekker 40 HP Vacuum Pump
- **2001 AUTOROUT CNC ROUTER**, 5' x 10' Moving Table, Torit ShopPro 3 HP Dust Collector
- **MUTLICAM MG SERIES CNC ROUTER**, 6' x 12' Table, MultiCam TurboVac Systems Vacuum Pump



Anderson CABMAXX/TC CNC Router

CNC STONE CENTERS

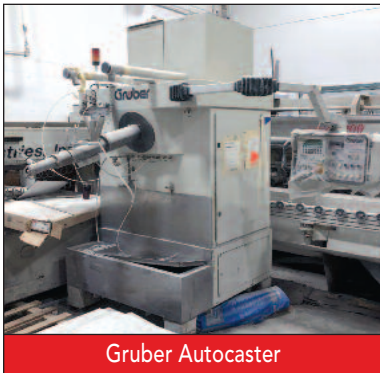
- **(2) 2003 CMS CNC STONE CENTERS**, Mdl. Concept 1.7, 6' x 12' Table, Osai Numerical Controls
- **2001 CMS CNC STONE CENTER**, Mdl. Junior, 4' x 8' Table, Osai Numerical Control



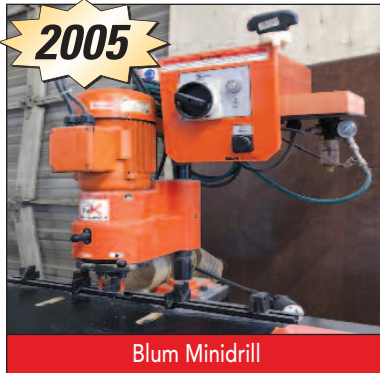
CMS Concept 1.7 CNC Stone Center

SUPPORT EQUIPMENT

- **GRUBER AUTOCASTER**, Siemens Simatic OP17 PLC Control
- **FASTTRACK 144-60 DIGITIZER SYSTEM**, w/Components
- **(2) PINSKE EDGETHERMOFORMING OVENS**, on Wheeled Base, Automatic Shut-Off Timer
- **(2) ROCKWELL UNISAW 10" TILTING ARBOR TABLE SAW**
- **2005 BLUM MINIDRILL**, Mdl. M51P1053.50MI, 5-Spindle Swiveling Boring Head
- **WISE 7.5 HP DUST COLLECTOR**, Mdl. IR-75-04CT, Taeha TNX-12N Pulse Timer
- **WISE 3 HP DUST COLLECTOR**, Mdl. IR-03-01CT, Taeha TNX-12N Pulse Timer
- **9-TIER GLUE DRYING RACK**, 3' x 12' Racks, Allen-Bradley PanelView 600 Control
- **TOPLINE VACUUM SLAB LIFTER**
- **(2) 1999 ECOLOGICAL WATER FILTRATION SYSTEMS**, Mdl. MB30
- **DELTA 12" BENCH DRILL PRESS**
- **DEWALT 12" DOUBLE BEVEL COMPOUND MITER SAW**, Mdl. DW716
- **RIDGID 48" X 24" UNIVERSAL STORAGE CHEST ON WHEELS**, Mdl. 2408-OS
- **LARGE QUANTITY OF HAND & POWER HAND TOOLS**: Makita 9401 4" Belt Sanders, Porter Cable 126 Porta Planes, Makita 3612 Routers, Angle Grinders, Power Drills, Orbital Sanders, Circular Saws, Milwaukee Super Sawzall, Miter Saws, Polishers, Clamps & More
- **LARGE QUANTITY OF OFFICE FURNITURE & EQUIPMENT**: HP DesignJet 500 Large Format Inkjet Printer, Office Cubicles, PC's, Chairs, Tables, Server Room, File Cabinets & More



Gruber Autocaster



Blum Minidrill



Pinske Edge Thermoforming Oven



Wise 7.5 HP Dust Collector



Large Quantity of Hand & Power Hand Tools



Milwaukee Super Sawzall



Miter Saws



View of Showroom



Conference Table with Chairs



Office Cubicles



HP DesignJet 500



Register at www.BIDITUP.com and receive auction updates via email

V-GROOVERS

- (5) PROFILEMATIC V-GROOVERS, Allen-Bradley PanelView 550 Control
- AUTO 'V' GROOVING V-GROOVER, Mdl. AVG 48 MFT

VERTICAL PANEL SAWS

- (5) 1999-2003 STRIEBIG OPTISAW 2 VERTICAL PANEL SAWS



AIR COMPRESSORS

- SULLAIR 30 HP AIR COMPRESSOR, Mdl. ES-8
- SULLAIR 60 HP AIR COMPRESSOR, Mdl. LS12-60H/A/SUL
- 2010 QUINCY 250 CFM REFRIGERATED AIR DRYER, Mdl. QPNC 250 (B10S)
- CURTIS KS15 AIR COMPRESSOR & AIR DRYER
- CURTIS KS10 AIR COMPRESSOR • CAMPBELL HAUSFELD 10 HP AIR



FORKLIFTS

- YALE 14,400 LB. CAP. DIESEL FORKLIFT, Mdl. GDP155CANPBV127.5, 2-Stage Mast, 173" Max Lift Height, Side Shift, 96" Forks
- KOMATSU 4,650 LB. CAP. PROPANE FORKLIFT, Mdl. FG25ST-16, 3-Stage Mast, 188" Max Lift Height, Side Shift
- KOMATSU 4,480 LB. CAP. PROPANE FORKLIFT, Mdl. FG25ST-12, 3-Stage Mast, 188" Max Lift Height, Side Shift
- TCM 4,000 LB. CAP. PROPANE FORKLIFT, Mdl. FCG20N6, 3-Stage Mast, 145.3" Max Lift Height
- CLARK 3,600 LB. CAP. PROPANE FORKLIFT, Mdl. C40, 3-Stage Mast, 188" Max Lift Height, Side Shift
- DONKEY FORKLIFT, (Was Being Used, w/International Truck)



CARS

- 2015 TOYOTA PRIUS-C ONE, 5-Door Hybrid Hatchback, Approx. 79,620 Miles
- 2015 TOYOTA PRIUS-C TWO, 5-Door Hybrid Hatchback, Approx. 113,744 Miles
- 2013 TOYOTA PRIUS-C ONE, 5-Door Hybrid Hatchback, Approx. 72,737 Miles
- 2013 TOYOTA PRIUS-C ONE, 5-Door Hybrid Hatchback, Approx. 181,336 Miles
- 2013 TOYOTA PRIUS-C ONE, 5-Door Hybrid Hatchback, Approx. 194,539 Miles
- 2013 TOYOTA PRIUS-C ONE, 5-Door Hybrid Hatchback, Approx. 211,730 Miles
- 2013 TOYOTA PRIUS-C TWO, 5-Door Hybrid Hatchback, Approx. 149,059 Miles
- 2013 TOYOTA PRIUS-C TWO, 5-Door Hybrid Hatchback, Approx. 206,349 Miles
- 2013 TOYOTA PRIUS-C TWO, 5-Door Hybrid Hatchback (Bad Battery)
- 2012 TOYOTA PRIUS-C ONE, 5-Door Hybrid Hatchback, Approx. 301,820 Miles
- 2012 TOYOTA PRIUS-C TWO, 5-Door Hybrid Hatchback, Approx. 178,746 Miles
- 2012 TOYOTA PRIUS-C TWO, 5-Door Hybrid Hatchback, Approx. 224,715 Miles



TRUCKS

- 1996 INTERNATIONAL 16' FLAT BED TRUCK, Mdl. 4700 4 x 2, Approx. 308,172 Miles
- 2002 ISUZU 1400 16' STAKE BED TRUCK, Automatic Transmission
- 2012 & 2013 FORD F-250 SUPER DUTY PICKUP TRUCK
- 2004 FORD F-250 XL SUPER DUTY PICKUP TRUCK, (Being Sold as Parts)
- 2003 FORD F-250 XL SUPER DUTY PICKUP TRUCK



TRAILER

- 1989 PINES 48' T/A DRY VAN TRAILER



TO SCHEDULE AN AUCTION OR APPRAISAL CALL 818.508.7034

WAREHOUSE INVENTORY

SINKS

- (11) STERLING 11444-NA MCALLISTER 32"x 18"x 8-1/4" DOUBLE BASIN SINKS, (New in Box)
- (3) STERLING 11409-L-NA MCALLISTER 29"x 16"x 8" UNDERCOUNTER OFFSET SINKS, (New in Box)
- (2) STERLING 11409-NA MCALLISTER 29"x 16"x 8" UNDERCOUNTER OFFSET SINKS, (New in Box)
- STERLING 11406-NA MCALLISTER 32"x 18"x 8" UNDERCOUNTER DOUBLE BASIN SINK, (New in Box)
- (16) STERLING 11600-NA MCALLISTER 32"x 18"x 9" UNDERCOUNTER SINGLE BASIN SINKS, (New in Box)
- (17) STERLING 11447-NA MCALLISTER 23-1/4"x 17-1/2"x 8" SINGLE BASIN SINKS, (New in Box)
- (15) STERLING 11448-NA SPRINGDALE 16"x 18" UNDERMOUNT SINGLE BASIN S/S SINKS, (New in Box)
- (17) STERLING 442050-0 WESCOTT 17"x 15" UNDERCOUNTER LAVATORY SINKS, Color: White, (New in Box)
- (5) STERLING 442040-0 WESCOTT 17"x 13" UNDERCOUNTER LAVATORY SINKS, Color: White, (New in Box)
- (7) STERLING 442007-96 STINSON SELF-RIMMING LAVATORY SINKS, Color: Biscuit, (New in Box)
- (13) STERLING 11722-NA CINCH 26-7/16"x 16-13/16"x 9-5/16" UNDERCOUNTER SINGLE BASIN SINKS, (New in Box)

- (8) STERLING 11723-NA CINCH 31-1/2"x 20-1/2"x 9" UNDERCOUNTER OFFSET SINKS, (New in Box)
- KOHLER 5409-NA STRIVE 29"x 18-5/16"x 9-5/16" UNDERCOUNTER SINGLE BOWL SINK, (New in Box)
- KOHLER 5931-4U-KA EXECUTIVE CHEF 33"x 22"x 10-5/8" UNDERCOUNTER SINK, Color: Black 'n Tan, w/Installation Kit, (New in Box)
- KOHLER 5864-5U-KA CAPE DORY 33"x 22"x 10-5/8" UNDERCOUNTER SINK, Color: Black 'n Tan, w/Installation Kit, (New in Box)
- (3) KOHLER 5846-5U-0 BROOKFIELD 33"x 22"x 9-5/8" DOUBLE EQUAL SINKS, Color: White, (New in Box)
- (3) KOHLER 6488-0 WHITEHAVEN 35-1/2"x 21-9/16"x 9-5/8" UNDERCOUNTER SINKS, w/Short Apron, Color: White, (New in Box)
- (2) KOHLER 6585-0 IRON/TONES 24-1/4"x 18-3/4"x 8-1/4" CAST IRON UNDERCOUNTER SELF-RIMMING SINKS, Color: White, (New in Box)
- (2) KOHLER 2030-N-0 GREENWICH 20-3/4"x 18-1/4" WALL MOUNT LAVATORY SINKS, Color: White, (New in Box)
- KOHLER 6411-3-0 INDIO 33"x 21-1/8"x 9-3/4" UNDERCOUNTER OFFSET 3-HOLE SINK, Color: White, (New in Box)
- KOHLER 5832-5U-0 BAKERSFIELD UNDERCOUNTER SINK, Color: White, w/Installation Kit, (New in Box)
- KOHLER 6625-0 IRON/TONES 33"x 18-3/4"x 9-5/8"

- UNDERCOUNTER SINK, Color: White, w/Installation Kit, (New in Box)
- KOHLER 6584-0 IRON/TONES 17"x 18-3/4"x 7-1/2" UNDERCOUNTER SELF-RIMMING SINK, Color: White, (New in Box)
- KOHLER 8437-1-CM1 KENNON 33"x 22"x 9-1/2" DUAL MOUNT SINGLE BASIN SINK, Color: Matte Black, (New in Box)
- (20) IPT SINK MDL. CB-1713 SINKS

FAUCETS

- (13) KOHLER 690-VS VINNATA S/S PULLDOWN KITCHEN FAUCETS, (New in Box)
- (8) KOHLER 691-VS VINNATA S/S PULLDOWN KITCHEN FAUCETS, (New in Box)
- (7) KOHLER 780-VS CRUETTE S/S PULLDOWN KITCHEN FAUCETS, (New in Box)
- (7) KOHLER 13963-VS ELATE S/S PULLOUT KITCHEN FAUCETS, (New in Box)
- (15) KOHLER 10215-4-BN FORTE BRUSHED NICKEL SINGLE CONTROL LAVATORY FAUCETS, (New in Box)
- (12) KOHLER 10217-4-BN FORTE BRUSHED NICKEL SINGLE CONTROL LAVATORY FAUCETS, (New in Box)
- (15) WASTE KING 3300 FOOD WASTE DISPOSALS,

OTHER

- LARGE QUANTITY OF DAP ALEX PLUS ACRYLIC



Warehouse Inventory



Sink Inventory



Faucet Inventory



Waste Disposals

HUGE QUANTITY OF GRANITE, CULTURED MARBLE, NATURAL STONE, CORIAN AND ZODIAQ SLABS TO 3 CM



Register at www.BIDITUP.com and receive auction updates via email

GLOBAL
ONLINE ONLY
LIVE WEBCAST
AUCTION

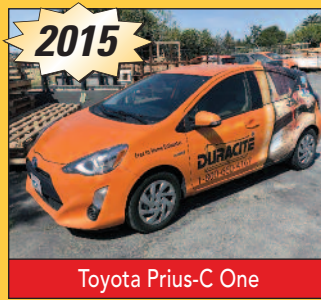
Thursday, June 13th,
Beginning at 9:00am PDT



ONE OF CALIFORNIA'S
LARGEST NATURAL
STONE COUNTERTOP
FABRICATORS,
MIA ACCREDITED



Anderson CABMAXX/TC



Toyota Prius-C One



Huge Quantities of Slabs

BIDITUP

BIDITUP AUCTIONS WORLDWIDE
AN INDUSTRIAL ASSETS COMPANY

11426 Ventura Boulevard
Studio City, California 91604
Phone: 818.508.7034
Fax: 818.508.3025
info@biditup.com

Steve Mattes, Auctioneer
CA Bond #0491804

MACHINERY AUCTION, LOOK INSIDE!

**ATTENTION: PLANT MANAGER
OR EQUIPMENT BUYER**



SCAN QR CODE
TO SEE ALL INFORMATION
ABOUT THIS AUCTION!

Global Online Only Live Webcast Auction



AUCTION: Thursday, June 13th, 2019, Beginning at 9:00am PDT
PREVIEW LOCATION: 2100 Huntington Drive, Fairfield, CA 94533
PREVIEW: Mon. (6/10), Tue. (6/11) & Wed. (6/12), 9:00am to 4:00pm or By Appointment

ONE OF CALIFORNIA'S LARGEST NATURAL STONE
COUNTERTOP FABRICATORS, MIA ACCREDITED

LODGING

HILTON GARDEN INN – (707) 426-6900
2200 The Courtyard, Fairfield, CA 94533
COURTYARD BY MARRIOTT – (707) 422-4111
1350 Holiday Ln, Fairfield, CA 94534

DIRECTIONS

OAKLAND INT'L AIRPORT (OAK): Head south on Ron Cowan Pkwy. Take I-880/Downtown Oakland. Merge onto Bessie Coleman Dr. Continue on 98th Ave. Take the I-880 N ramp to Downtown/Oakland. Take I-80 E/I-580 W exit toward San Rafael/Sacramento. Take exit 47 to merge onto Air Base Pkwy. Merge onto Air Base Pkwy. Turn left onto Walters Rd. Walters Rd becomes Huntington Dr. Destination will be on the right.

ONLINE BIDDER INSTRUCTIONS: All internet bidders must register for this auction at least 72-hours prior to the sale date, if you do not you will not be approved. All internet bidders must provide a wire transfer deposit of approximately 25% of your planned spending amount or \$2,500 minimum, whichever is greater in order to be approved to bid. Those who do not post the deposit will not be approved. Period. Please refer to www.biditup.com for online bidder terms.

UPCOMING AUCTION CALENDAR



COMPUTA-BASE MACHINING – Late Model Machining & Turning Facility
Wednesday, June 12 at 10am EDT • 411 N Grove St., Berlin, NJ 08009

GLOBAL WEBCAST



WEST LINN PAPER COMPANY – Complete West Linn Paper Mill
Wed. & Thurs., June 19 & 20 at 8am PDT Each Day • 4800 Mill St., West Linn, OR 97068

GLOBAL WEBCAST



FALCON TRANSPORT – Multi-Million Dollar Auction – 1000+ Truck & Trailers, New as 2016
Wed. & Thur., June 26 & 27 at 10am EDT • Various Locations Across the United States

GLOBAL WEBCAST

FOR THE COMPLETE TERMS & CONDITIONS OF THE FEATURED AUCTION
Please visit our website www.BIDITUP.com

Thinking of having an auction or need an appraisal?
Call us at 818.508.7034