

AUCTION

2 DAYS • 1 LOCATION • HUMBLE, TEXAS

At the Premises of

R.B. MACHINE WORKS, INC.

2407-A WILSON ROAD, HUMBLE, TEXAS 77396

DAY ONE: WEDNESDAY, DECEMBER 9
LIVE ON-SITE
WALK-THRU & WEBCAST • 9:30 A.M.

HUGE OFFERING OF LATE MODEL CNC MACHINE TOOLS, MANUAL MACHINE TOOLS, & BORE CLADDING SYSTEMS

Featuring Toshiba CNC Horizontal & Vertical Boring Mills as new as 2012; (6) Doosan Puma 700 & 800L CNC Lathes, (16) Arc Specialties Bore Cladding Systems, (11) Kingston Lathes, Huge Selection Tooling & Precision Machine Accessories, (15) Forklifts, More!

INSPECTION: Monday & Tuesday, December 7 & 8, 9:00 A.M. to 4:00 P.M. Wearing Masks & Social Distancing Will be Required.

2012



CNC

4 AVAILABLE

TOSHIBA MDL.
BTD-110-HR16
CNC HORIZONTAL
BORING MILLS

DOOSAN
MDL. VM960L
4-AXIS CNC
VERTICAL
MACHINING
CENTER



CNC

2011

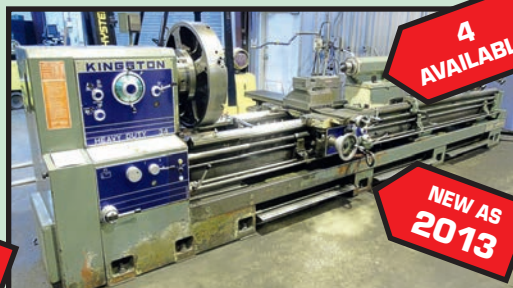
2008



CNC

2 AVAILABLE

TOSHIBA MDL. TUE15
CNC VERTICAL BORING MILL



KINGSTON 34" X 120" MDL. HR3000 H.D. GAP BED ENGINE LATHE

4 AVAILABLE

NEW AS
2013

ARC SPECIALTIES MDL. ARC-051
BORE CLADDING SYSTEM



2015

DAY TWO: THURSDAY, DEC. 10 TIMED ONLINE ONLY
BIDS START CLOSING: 10:00 A.M.

Read Partial Terms and Conditions
on Page 10 Brochure

YOU MUST REGISTER IN ADVANCE FOR ONLINE BIDDING AT THIS AUCTION.

Go to www.pmi-auction.com and click on BidSpotter.com on our calendar page for this auction sale.

BUYER'S PREMIUM: 15%
ON-SITE • 18% WEBCAST

Sale Conducted By:

PLANT & MACHINERY INC.

AUCTIONEERS • APPRAISERS • LIQUIDATORS • REAL ESTATE

Ron Moore, TX Lic. #7314

HOUSTON • DALLAS • ST. LOUIS

Headquarters:

1304 Langham Creek Drive, Suite 454
Houston, Texas 77084

PHONE: (713) 691-4401

FAX: (713) 672-7905

E-MAIL: pmi@pmi-auction.com
WEBSITE: www.pmi-auction.com

2012



TOSHIBA MDL. BTD-110-HR16
CNC
HORIZONTAL
BORING MILLS

CNC

4
AVAILABLE

2008



2
AVAILABLE

CNC

TOSHIBA
MDL. TUE15
CNC VERTICAL
BORING MILL

3
AVAILABLE



CNC

HAAS
MDL. EC-1600
CNC
HORIZONTAL
MACHINING
CENTER

2011

CNC HORIZONTAL BORING MILLS

(2) **TOSHIBA MDL. BTD-110-HR16**, new 2012, Tosnuc 999 CNC control, 4.3" spdl. dia., 55" x 63" rotary tbl., 13,860-lb. max. tbl. load, 78.7" X, 59" Y, 57" Z, 19.7" W-axis travels, CAT-50, 3,000 RPM, 40 HP, 38 ATC, S/N 145714, S/N 145713.

TOSHIBA MDL. BTD-110-R16, new 2008, Tosnuc 999 CNC control, 4.3" spdl. dia., 55" x 63" rotary tbl., 13,860-lb. max. tbl. load, 78.7" X, 59" Y, 57" Z, 19.7" W-axis travels, CAT-50, 3,000 RPM, 40 HP, 38 ATC, S/N 145156.

TOSHIBA MDL. BTD-110-R16, new 2002, Tosnuc 888 CNC control, 4.3" spdl. dia., 55" x 63" rotary tbl., 13,860-lb. max. tbl. load, 78.7" X, 59" Y, 57" Z, 19.7" W-axis travels, CAT-50, 3,000 RPM, 40 HP, 38 ATC, S/N 144491.

CONTOURING FACING HEADS

(2) **INNOVATIVE TOOLING SOLUTIONS MDL. CH-16**, 0-900 mm range.

(2) **INNOVATIVE TOOLING SOLUTIONS MDL. CH-12**, 0-600 mm range.

CNC HORIZONTAL MACHINING CENTERS

HAAS MDL. EC-1600, new 2011, Haas CNC control, 64" x 36" tbl. w/30" built-in 4th axis rotary, 64" X, 50" Y, 32" Z-axis travels, CAT-50, 6,000 RPM, 40 HP, 50 ATC, 1,000 PSI chip conveyor, S/N 2053370.

HAAS MDL. EC-1600, new 2010, Haas CNC control, 64" x 36" tbl. w/30" built-in 4th axis rotary, 64" X, 50" Y, 32" Z-axis travels, CAT-50, 6,000 RPM, 40 HP, 30 ATC, 1,000 PSI TSC, chip conveyor, S/N 2053301.

HAAS MDL. EC-1600-4X, new 2005, 64" x 36" tbl. w/30" built-in 4th axis rotary, 64" X, 50" Y, 32" Z-axis travels, CAT-50, 6,000 RPM, 30 HP, 1,000 PSI TSC, 30 ATC, chip conveyor, S/N 51431.

TOYODA MDL. FA800, new 2006, Fanuc Series 16i-MB CNC control, (2) 31.5" sq. pallets, 53.1" X, 45.2" Y, 45.2" Z-axis travels, 1 deg. Indexing, CAT-50, 6,000 RPM, 40 HP, chip conveyor, S/N NS1553.

2006



CNC

TOYODA MDL. FA800
CNC HORIZONTAL
MACHINING CENTER



(1 OF 4)
CONTOURING
FACING HEADS

2011**4TH
AXIS****CNC****DOOSAN MDL. VM960L 4-AXIS CNC VERTICAL MACHINING CENTER****2008****CNC****TOSHIBA MDL. TU15 CNC VERTICAL BORING MILL****2014****4TH
AXIS****CNC****DOOSAN MYNX MDL. 7500/50 4-AXIS CNC VERTICAL MACHINING CENTER****2008****CNC****YOUJI MDL. YV-1200ATC CNC VERTICAL BORING MILL**

CNC VERTICAL MACHINING CENTERS

DOOSAN MDL. VM960L 4-AXIS, new 2011, Fanuc Series 31i, Mdl. A CNC control, 102" x 37" tbl., 9,920 load, 94.5" X, 37.8" Y, 31.5" Z-axis travels, CAT-50, 6,000 RPM, 30 HP, 40 ATC, Koma 4th axis w/15-1/2" dia. 3-jaw chuck, 5-1/2" bore, chiller unit, chip conveyor, S/N MV0031-000182.

DOOSAN MDL. VM960 4-AXIS, new 2013, Fanuc Series 31i, Mdl. B CNC control, 102" x 37" tbl., 8,818-lb. load, 78.7" X, 37.8" Y, 31.5" Z-axis travels, CAT-50, 6,000 RPM, 30 HP, 40 ATC, Koma 4th axis w/15-3/4" chuck, 5-1/2" bore, chip conveyor, spdl. chiller, S/N MV0030-001272.

DOOSAN MYNX MDL. 7500/50 4-AXIS, new 2014, Doosan Fanuc I Series CNC control, 29-1/2" x 63" tbl., 60" X, 30" Y, 24.6" Z-axis travels, CAT-50, 6,000 RPM, 30 HP, 40 ATC, Kitagawa 4th axis w/12" chuck, 4-1/4" bore, chiller unit, chip conveyor, Renishaw probe, S/N MV0051-000842.

CNC VERTICAL BORING MILLS

TOSHIBA MDL. TUE15, new 2008, Fanuc Series Oi-TC CNC control, 59" plain tbl. w/(4) top jaws, 70.87" max. swing, 67.72" max. ht., 59.06" max. cutting ht., 70.88" max. cutting dia., 17,600-lb. tbl. load, 2-300 RPM (in 2 ranges), 50 HP main motor, 12-pos. turret, S/N 142414.

TOSHIBA MDL. TUE15, new 2001, Fanuc Series 18T CNC control, 59" plain tbl. w/(4) top jaws, 70.87" max. swing, 67.72" max. ht., 59.06" max. cutting ht., 70.88" max. cutting dia., 17,600-lb. tbl. load, 2-300 RPM (in 2 ranges), 50 HP main motor, 12-pos. turret, S/N 440204.

YOUJI MDL. YV-1200ATC, new 2008, Fanuc Series Oi-TC CNC control, 49" plain tbl. w/(4) top jaws, 63" max. swing, 55" cutting dia., 60" ram to tbl. max., 350 RPM, 60 HP, 12-pos. ATC, chip conveyor, S/N 08V12T1965.

CNC LATHES

(2) DOOSAN PUMA MDL. 800L, new 2008, Fanuc Series 21i-TB CNC control, 40.5" sw. over bed, 31.5" sw. over carriage, 123.8" btwn. centers, 12-1/2" bore, 750 RPM, 60 HP, 12-station turret, 26-3/4" pwr. chuck, chip conveyor, S/N P60L0864, S/N P60L0950.

DAEWOO PUMA MDL. 800L, new 2001, Fanuc Series 18i-T CNC control, 40.5" sw. over bed, 31.5" sw. over carriage, 123.8" btwn. centers, 12-1/2" bore, 750 RPM, 60 HP, 12-station turret, 26" pwr. chuck, chip conveyor, S/N P60L0045.

DOOSAN PUMA MDL. 800, new 2008, Fanuc Series 21i-TB CNC control, 40.5" sw. over bed, 31.5" sw. over carriage, 63" btwn. centers, 12-1/2" bore, 750 RPM, 60 HP, 21" dia. 3-jaw pwr. chuck, 12-station turret, chip conveyor, S/N PM600782.

(3) DOOSAN PUMA MDL. 700, Fanuc Series 21i-TB CNC control, 40.5" sw. over bed, 31.5" sw. over carriage, 63" turning length, 7.12" spdl. bore, 1,500 RPM, 60 HP, 12-station turret, 24" dia. 3-jaw pwr. chuck, chip conveyor, S/N PM600334 (2006), S/N PM600281 (2005), S/N PM600724 (2007).

DOOSAN PUMA MDL. 400LC, new 2008, Fanuc Series 21i-TB CNC control, 27.5" sw. over bed, 18.9" sw. over carriage, 81.7" max. turn length, 7.1" bore, 2,000 RPM, 50 HP, 12-station turret, 21" dia. 3-jaw pwr. chuck, chip conveyor, S/N P35L3482.

(2) HITACHI SEIKI MDL. HITEC-TURN 50G, Seicos 10L Multi CNC control, 6-1/4" bore, 17-3/4" dia. 3-jaw pwr. chuck, 10-station turret, LNS Turbo chip conveyor, S/N TG40230, S/N TG40012.

HITACHI SEIKI MDL. HITEC-TURN 40G, Seicos L Multi CNC control, 17-1/2" dia. 3-jaw pwr. chuck, 4-3/4" bore, 12-station turret, LNS Turbo chip conveyor, S/N TG40096.

(2) HITACHI SEIKI MDL. HITEC-TURN 25G, Seicos L Multi CNC control, Kitagawa 12" chuck, 12-station turret, S/N TG25158 w/Mayfran chip conveyor, S/N TG25299 w/LNS Turbo chip conveyor.

HWACHEON MDL. HI-EC035, new 1999, Fanuc Series 18T CNC control, Schunk 12" dia. 3-jaw pwr. chuck, 10-station turret, S/N MO63347G1W.

(6) ASSORTED RIP STEADYRESTS for use on the Puma Md. 800, Md. 700 and Md. 400 CNC lathes.

NEW AS
2008

12-1/2"
BORE

CNC

3
AVAILABLE

(1 OF 3) DOOSAN PUMA MDL. 800L CNC LATHES



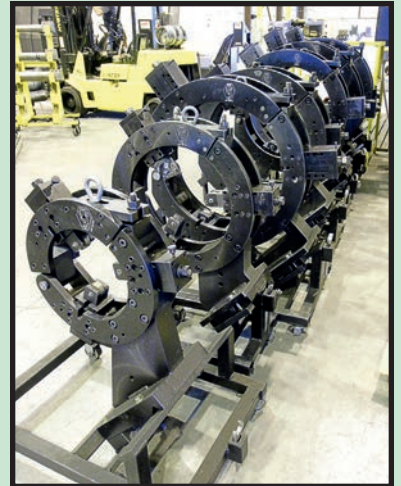
CNC

2008

DOOSAN PUMA MDL. 400LC CNC LATHE

2
BIG
DAYS

DON'T
MISS
THIS
SALE



ASSORTED R.I.P. STEADYRESTS

2008



CNC

DOOSAN PUMA MDL. 800 CNC LATHE

2001



CNC

DOOSAN PUMA MDL. 800L CNC LATHE

**DAY ONE:
WEDNESDAY,
DECEMBER 9
LIVE ON-SITE
WALK-THRU &
WEBCAST • 9:30 A.M.**

GAP BED ENGINE LATHES

(4) KINGSTON 34" X 120" MDL. HR3000 HEAVY DUTY 34, 45.6" sw. in gap, 25.1" sw. over cross slide, 4.09" spdl. bore, spds.: 8-800 RPM, 20 HP, Newall 2-axis D.R.O., taper attach., 31-1/2" dia. 4-jaw chuck, steadyrest, inch/metric threading, S/N 3M020120G (2013), S/N 4M980817G (2010), S/N 038210056, (1997), S/N 03801123S (1997).

(2) KINGSTON 30" X 120" MDL. HR3000 HEAVY DUTY 30, 41.2" sw. in gap, 20.7" sw. over cross slide, 4.09" spdl. bore, spds.: 8-800 RPM, 20 HP motor, taper attach., 24-3/4" dia. 4-jaw chuck, steadyrest, inch/metric threading, S/N 3M970720G, (2009), S/N 038711080 (2000).

KINGSTON 30" X 80" MDL. HR2000 HEAVY DUTY, new 1996, 24-3/4" dia. 4-jaw chuck, 20 HP motor, 4-1/4" spdl. bore, taper attach., steadyrest, S/N 02831007G.

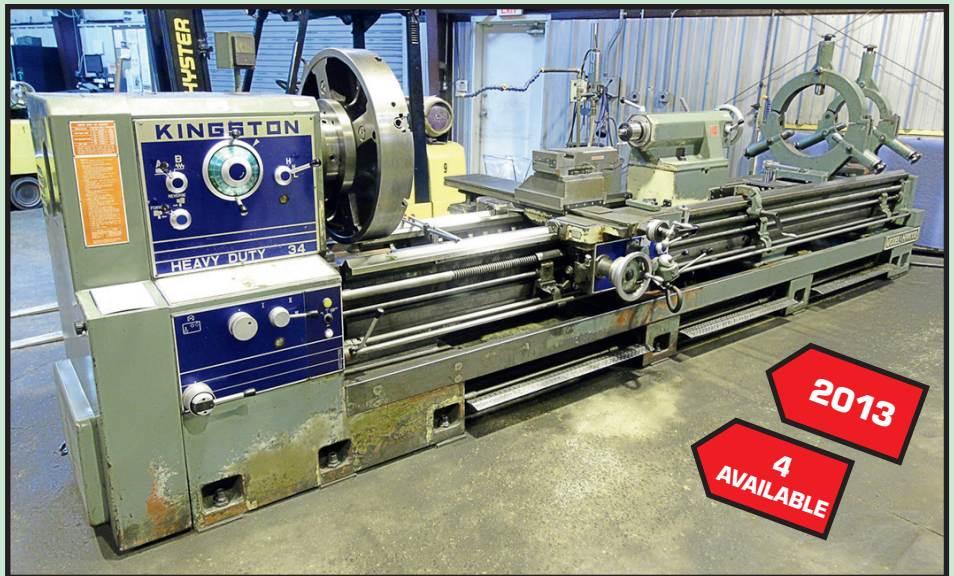
KINGSTON 26" X 90" MDL. HD2690, new 2014, 35.1" sw. in gap, 17.5" sw. over cross slide, 4.09" spdl. bore, spds.: 13-1,200 RPM, 15 HP, 19-1/4" dia. 4-jaw chuck, steadyrest, taper attach., inch/metric threading, S/N CH14031.

KINGSTON 22" X 90" MDL. HD2290, new 2014, 31.3" sw. in gap, 13" sw. over cross slide, 4.09-1/4" spdl. bore, spds.: 13-1,200 RPM, 10 HP, taper attach., 15-3/4" dia. 4-jaw chuck, inch/metric threading, S/N CH14040.

(2) KINGSTON 22" X 60" MDL. HD2260, new 2010, 31.3" sw. in gap, 13" sw. over cross slide, 4.09" spdl. bore, spds.: 13-1,200 RPM, 15-3/4" dia. 4-jaw chuck, taper attach., inch/metric threading, S/N CH10267, S/N CH10269.



(1 OF 3) DOOSAN PUMA MDL. 700 CNC LATHE



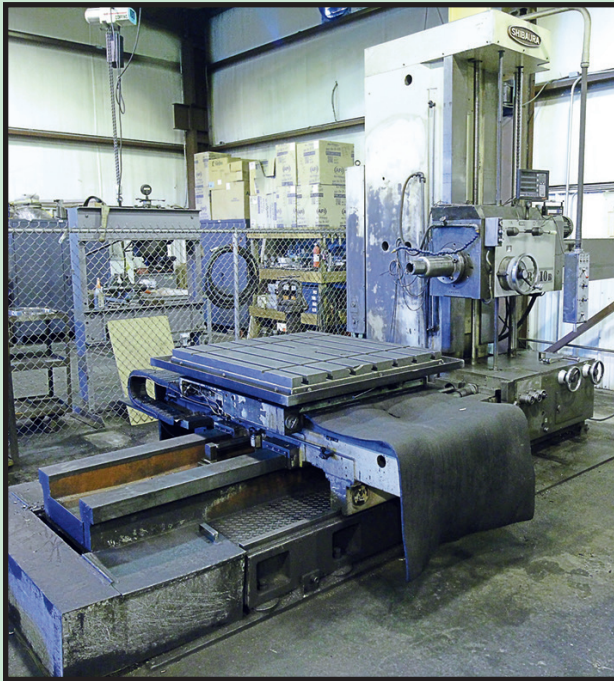
KINGSTON 34" X 120" MDL. HR3000 H.D. GAP BED ENGINE LATHE



KINGSTON 30" X 120" MDL. HR3000 H.D. GAP BED ENGINE LATHE



KINGSTON 26" X 90" MDL. HD2690 GAP BED ENGINE LATHE



**TOSHIBA
SHIBAURA
MDL. BT-10B (R1)
HORIZONTAL
BORING MILL**



**DOALL
MDL. C-1216A
AUTOMATIC
HORIZONTAL
BANDSAW**

HORIZONTAL BORING MILLS

GIDDINGS & LEWIS FRASER MDL. DP5T, 5" dia. spdl., 48" x 60" rotary tbl., spds.: 7.5–975, Newall 3-axis D.R.O., Newall D.R.O. on quill, pendant control, S/N 1501371.

TOSHIBA SHIBAURA MDL. BT-10B (R1), new 1980, 4" dia. spdl., 49" x 44" rotary tbl., spds.: 20–1,000 RPM, pendant control, Newall D.R.O., S/N 6908.

TOS VARNDSODORF MDL. W100A, new 1998, 4" dia. spdl., 49-1/4" x 49-1/4" rotary tbl., DoAll 3-axis D.R.O., built-in facing head, S/N 4406.

LUCAS MDL. 441B72, 4" dia. spdl., 48" x 48" built-in rotary tbl., pendant control, spdl. spds.: 4–2,500 RPM, Newall 3-axis D.R.O., S/N 41-8-3436.

WOTAN MDL. IBERICA, 32" x 39" rotary tbl., 3" spdl. dia., pendant control, S/N 60.100 (in need of repair).

VERTICAL TURRET MILLS

(2) BRIDGEPORT SERIES 1, 9" x 49" tbl., 2 HP variable spdl. head, Newall D.R.O., long. pwr. feed, pwr. feed on elevation, S/N HDNG4805M, S/N HDNG4315 w/4" riser.

(2) BRIDGEPORT SERIES 1, 9" x 48" tbl., riser, 2 HP variable spd. head, Newall 2-axis D.R.O., long. pwr. feed, S/N 278585, S/N 268175 w/7" riser.

BRIDGEPORT J-HEAD, 9" x 42" tbl., 1 HP step pulley head, Newall 2-axis D.R.O., long. pwr. feed, Bridgeport shaping attach., S/N 234579.

TURRET LATHES

(2) WARNER & SWASEY MDL. 4A, M-3550, 9-1/2" spdl. bore, cross sliding turret, 24" dia. 4-jaw chuck, S/N 3052598.

WARNER & SWASEY MDL. 4A, M-3550, 9-1/2" spdl. bore, 6-pos. turret, fixed turret, 24" dia. 4-jaw chuck, S/N R1568763.

TILT FRAME VERTICAL BANDSAWS

DOALL MDL. TF-2025M, new 2008, 20" x 25" rect. cap., S/N 543-08125.

MARVEL SERIES 8-MARK-1, S/N 820479.

VERTICAL BANDSAWS

DOALL CONTOUR-MATIC MDL. 1612-3, 16" x 12" rect. cap., 125" band length, blade welder, S/N 152-60111.

RADIAL ARM DRILLS

GIDDING & LEWIS BICKFORD CHIPMASTER 6' X 15", pwr. feed, clamping and elevation, S/N 954-00150-67.

CARLTON 4' X 13", pwr. feed, clamping and elevation, spdl. spds.: 15–1,500 RPM, 10 HP motor, S/N 2749.

MISCELLANEOUS MACHINERY

ECONOLINE 42" GLOVE TYPE BLAST CABINET, 120 PSI max. pressure, 5 PSI min. pressure, Cyclone dust reclamation system.

DAKE MDL. 75H H-FRAME PRESS, 75 T. cap., S/N 180469.

ELECTRO-ARC MDL. 20BOT TAP DISINTEGRATOR, 15 KVA, 440 v., 60 Hz, S/N 13564.

DAREX MDL. XT3000 DRILL SHARPENER, S/N 1208041.

DAREX MDL. SP2500 DRILL SHARPENER, S/N 266291J.

AUTOMATIC HORIZONTAL BANDSAW

DOALL MDL. C-1216A, 12" x 16" rect. cap., 1-1/2" band blade width, auto. feed index, S/N 373-82803.



**BRIDGEPORT SERIES 1
VERTICAL TURRET MILL**



**DOALL MDL. TF-2025M TILT FRAME
VERTICAL BANDSAW**



**GIDDINGS & LEWIS BICKFORD CHIPMASTER
RADIAL ARM DRILL**



**MARVEL SERIES 8-MARK-1
VERTICAL BANDSAW**

NEW AS
2014



LARGE
QUANTITY

PARTIAL VIEW OF LARGE QUANTITY BORE CLADDING SYSTEMS

2015



ARC SPECIALTIES MDL. ARC-051
BORE CLADDING SYSTEM

2014



ARC SPECIALTIES MDL. ARC-05PL
BORE CLADDING SYSTEMS

BORE CLADDING SYSTEMS

ARC SPECIALTIES MDL. ARC-051, new 2015, 5,000 amps, Miller Mdl. XMT400 CC/CV main arc welding pwr. supply, 40" rotary tbl., touch screen pendant control, Best Welds chiller, S/N 1559-21018.

(7) ARC SPECIALTIES MDL. ARC-5P PLUS, as new as 2014, Miller Mdl. XMT450 CC/CV main arc welding pwr. supply, Hot One hot wire pwr. supply, Lincoln Electric auto drive wire feeder, Arc Specialties touch screen control, 36" 20,000-lb. cap. rotary tbl., Best Welds chiller, S/N 1448-20850 (2014), S/N 1450-20852 (2014), S/N 1449-20851 (2014), S/N 1372-20749 (2012), S/N 1364-20748 (2012), S/N 1363-20747 (2012), S/N 1421-20842 (2013).

(2) ARC SPECIALTIES MDL. ARC-05PL, new 2014, 5,000 amps, Miller Mdl. XMT450 CC/CV main pwr. source, Miller Coolmate 3.5 chiller w/40" rotary tbl., Hot One hot wire pwr. supply, pendant control, Mass-View flow switch, S/N 1478-20928, S/N 1551-21057.

ARC SPECIALTIES MDL. ARC-051P, new 2013, 5,000 amps, Big Red approx. 15' x 12' manipulator, Miller Mdl. X450 CC/CV main pwr. source, Solid State hot wire pwr. supply, Lincoln auto drive wire feeder, 60" 20,000-lb. cap. rotary tbl., Best Welds chiller, S/N 1436-20848.

ARC SPECIALTIES MDL. ARC-5, new 2004, Esab Mdl. 350MPI pwr. source, Hot One pwr. source, Eason Mdl. 1000 control, KEC 36" rotary tbl., Best Welds chiller, S/N 1044-20114.

ARC SPECIALTIES MDL. ARC-5, new 2005, Preston Eastin 8' x 8' manipulator, Miller Mdl. XMT450 CC/CV Hot One Solid State hot wire pwr. supply, Arc Specialties control, 36" 20,000-lb. cap. rotary tbl., Best Welds chiller, S/N 1075-20202.

ARC SPECIALTIES MDL. ARC-5P, new 2007, Preston Eastin 8' x 10' manipulator, new 2007, Esab Mdl. 350MPI pwr. source, Hot One Solid State hot wire pwr. supply, 36" rotary tbl., Best Welds chiller, S/N 1149-20300.

ARC SPECIALTIES MDL. ARC-5P, new 2005, Preston Eastin manipulator, 8' vert. travel, 8' horiz. travel, 10'-1" L-R range, Miller Mdl. XMT450 CC/CV welder, Hot One Solid State hot wire pwr. supply, 36" 20,000-lb. cap. rotary tbl., Arc Specialties touch screen control, Best Welds chiller, S/N 1090-20222.

ARC SPECIALTIES MDL. ARC-5P, new 2008, Miller Mdl. XMT450 CC/CV Hot One Solid State hot wire pwr. supply, Arc Specialties control, 36" 20,000-lb. cap. rotary tbl., Best Welds chiller, S/N 1164-20358.

INSPECTION: Monday & Tuesday, December 7 & 8, 9:00 A.M. to 4:00 P.M. Wearing Masks & Social Distancing Will be Required.

NEW AS
2014



(1 OF 7) ARC SPECIALTIES MDL. ARC-5P
PLUS BORE CLADDING SYSTEMS

2007



ARC SPECIALTIES MDL. ARC-5P
BORE CLADDING SYSTEM

2013



CLADDING MACHINE ACCESSORIES



ARC SPECIALTIES MDL. ARC-051P BORE CLADDING SYSTEM



**CUSTOM CONFIGURED
CAR BOTTOM FURNACE**

**2
BIG
DAYS**

**CUSTOM TOP HAT STYLE
FURNACE**



FURNACES

CUSTOM CONFIGURED CAR BOTTOM FURNACE, insulated, approx. 16'L. x 11'W., Eclipse Veri-Flame flame monitoring controls.

CUSTOM TOP HAT STYLE FURNACE, 6' x 10', Eclipse Veri-Flame flame monitoring controls.

WELDING POSITIONERS

PRESTON EASTIN MDL. FT60HD, new 2005, 6,000-lb. cap. @ 12", welded onto a custom frame, S/N FT60HD-18.

PROFAX MDL. WP1000, 1,000-lb. cap. vert., 1,750-lb. cap. horiz., 24.5" tbl. dia., spds.: .2-2 RPM, 0-135 deg. on angle, S/N WP10-2162.

WELDING MACHINES

MILLER MDL. DELTAFAB, new 2010, 500 amps, S/N MA090180U, Miller Mdl. 24A wire feeder, S/N MA220070V.

MILLER MDL. DELTAWELD 452, S/N LE273450, Miller 70 Series wire feeder, S/N LJ360501U.

(2) MILLER MDL. XMT450 CC/CV, new 2014 S/N ME262631U, new 2015 S/N MF152501U.

MILLER MDL. SYNCROWAVE 350LX, 350 amps, S/N LF155400.

MILLER MDL. MAXSTAR 300SD, S/N LF299487.

PLASMA CUTTING SYSTEM

HYPERTHERM MDL. POWERMAX 45.

QUALITY CONTROL LAB

STARRETT MDL. RGDC6460-40 COORDINATE MEASURING MACHINE, dims: 60" x 64" x 40", Renishaw probe, S/N SD5302.

ST INDUSTRIES INC. 24" MDL. 20-2450 OPTICAL COMPARATOR, ASUS control.

(4) KING PORTABLE BRINELL HARDNESS TESTERS.

BUEHLER ROCKWELL HARDNESS TESTER.

GAGEMAKER MICTRAC MDL. MT-3048-50 GAGE SETTING MEASUREMENT SYSTEM, S/N H07733.

GAGEMAKER MICTRAC 24" GAGE SETTING MEASUREMENT SYSTEM, S/N G2E8.

GAGEMAKER MICTRAC GAGE SETTING MEASUREMENT SYSTEM, S/N D6J4.

HUGE ASSORT. OF: RING AND PLUG GAUGES; I.D. MICROMETERS; O.D. MICROMETERS; PIN GAUGE SETS; O.D. MICROMETER SETS; GAGEMAKER DIA. GAUGES; GROOVE DIA. GAUGES; BORE GAUGES.

MAGNETIC PARTICLE INSPECTION MACHINE

MAGNAFLUX MDL. H-820R, 6,000 max. output amps, 36" x 84" bed, S/N 88285.



**MAGNAFLUX MDL. H-820R MAGNETIC PARTICLE
INSPECTION MACHINE**



STARRETT MDL. RGDC6460-40 C.M.M.



**MILLER MDL.
SYNCROWAVE
350LX WELDING
MACHINE**



**MILLER MDL.
DELTAWELD 452
AND DELTAFAB
WELDING
MACHINES**



SAMPLE VIEW OF LARGE QTY. Q.C. AND MEASURING EQUIPMENT

ROTARY SCREW AIR COMPRESSORS

INGERSOLL RAND MDL. SSUP6-25-125, 25 HP motor, S/N PX0015U02123.
INGERSOLL RAND MDL. SSRUP6-25-125120, 25 HP motor, S/N CBV154523.
INGERSOLL RAND MDL. SSR-EP25, 25 HP motor, S/N JX0255U99163.
INGERSOLL RAND MDL. EP15-ESP, 15 HP motor, S/N AN1517U95341.
(2) INGERSOLL RAND MDL. UPC-15C-150, 15 HP motor, 150 PSI max. pressure, S/N CBV308905 (2,121 H.O.M.), S/N CBV308907 (7,270 H.O.M.).

FLATBED WORK TRUCKS

2007 FORD MDL. F-650XL SUPER DUTY, auto. trans., approx. 20'L. bed, leather seats, ODO: 136,992 miles, Texas License Plate No. DZX6618, VIN 3FRNF65C18V644123.
2014 FORD MDL. F-550, Power Stroke engine, auto. trans., leather seats, 16'L. bed, toolbox, wood decking, Texas License Plate No. DCN5586, VIN 1FDUF5GT8EEB17652.

PICKUP TRUCKS

2018 RAM LARAMIE LONGHORN 1500, 5.7 liter Hemi engine, 4-wheel drive, Texas License Plate No. KRX2732, ODO: 54,485 miles, VIN 1C6RR7PT9JS175351.
2014 FORD F-150 FX4, EcoBoost 6-cylinder engine, 4-wheel drive, Texas License No. DRW9937, VIN 1FTFW1ET6EKD73945.
2009 FORD MDL. F-250XL SUPER DUTY, Texas License Plate No. 53ZFJ9, VIN 1FTN-F20539EA76176.

A-FRAME GANTRY CRANE SYSTEM

GAFFEY 3 T. X APPROX. 20'L., Harrington 3 T. cap. elec. chain hoist, S/N 00081099.

FLOOR TYPE PEDESTAL JIB CRANES

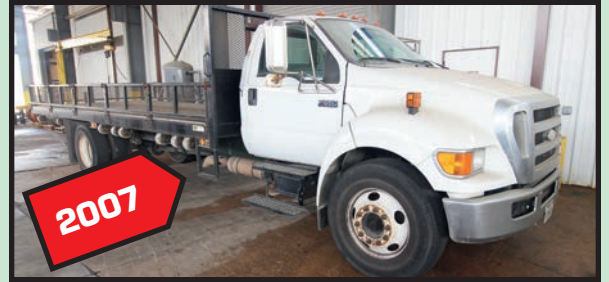
CRANE MAN INC. 1/2 T. X APPROX. 15' REACH, Budgit 1/2 T. cap. elec. chain hoist;
GAFFEY 1/2 T. X APPROX. 15' REACH; **GAFFEY 1/2 T. X APPROX. 15' REACH**, Coffing 1/2 T. cap. elec. chain hoist; **(3) GAFFEY 1/2 T. X APPROX. 15' REACH**, Budgit 1/2 T. cap. elec. chain hoist; **GAFFEY 1/2 T. X APPROX. 15' REACH**, Coffing 1/2 T. cap. elec. chain hoist; **CRANE MAN INC. 1/2 T. CAP.**; **CRANE MAN INC. 1/4 T. CAP.**, Coffing 1/4 T. cap. hoist.

WALL MOUNTED JIB CRANES

(3) HANDLING SYSTEMS INC. 2 T. X APPROX. 20' REACH, Coffing 2 T. cap. elec. chain hoist; **(7) HANDLING SYSTEMS INC. 2 T. X APPROX. 18' REACH**, Coffing 2 T. cap. elec. chain hoists; **(4) HANDLING SYSTEMS INC. 2 T. X 16' REACH**, Coffing 2 T. cap. hoists; **HANDLING SYSTEMS INC. 2 T. CAP.**, Coffing 2 T. cap. elec. chain hoist; **HANDLING SYSTEMS INC. 1-1/2 T. CAP.**; **(2) HANDLING SYSTEMS INC. 1 T. X APPROX. 18' REACH**, Budgit 1 T. cap. elec. chain hoists; **HANDLING SYSTEMS INC. 1/2 T. CAP.**, Coffing 1/2 T. cap. elec. chain hoist; **(8) HANDLING SYSTEMS INC. 1/2 T. X APPROX. 15' REACH**, Coffing 1/2 T. cap. elec. chain hoists; **1/2 T. CAP. X APPROX. 18' REACH**, Budgit 1/2 T. cap. elec. chain hoist; **1/2 T. CAP. X APPROX. 18' REACH**, Coffing 1/2 T. cap. elec. chain hoist.



SAMPLE VIEW OF ROTARY SCREW AIR COMPRESSORS



FORD F-650XL SUPER DUTY FLATBED TRUCK



PROFAX MDL. WP1000
WELDING POSITIONER



DAKE MDL. 75H H-FRAME PRESS



SAMPLE VIEW OF WALL MOUNTED JIB CRANES



ST INDUSTRIES
INC. 24"
OPTICAL
COMPARATOR

SAMPLE VIEW OF
WALL MOUNTED
JIB CRANES



**DAY ONE:
WEDNESDAY,
DECEMBER 9
LIVE ON-SITE
WALK-THRU
& WEBCAST
9:30 A.M.**

DON'T MISS THIS SALE



HYSTER XL2 10,000-LB. BASE CAP. FORKLIFT



HYSTER 12,000-LB. BASE CAP. FORKLIFT



HYSTER 6,000-LB. BASE CAP. FORKLIFT

FORKLIFTS

HYSTER 12,000-LB. BASE CAP. MDL. S120FT, new 2015, LPG, 90" 3-stage mast, 163" lift ht., cushion tires, 48" forks, S/N H004V03723N.

CATERPILLAR 11,000-LB. BASE CAP. MDL. PD11000, new 2012, diesel, 89" 3-stage mast, 189" lift max. ht., dual drive pneumatic style tires, side shift, 48" forks, S/N AT28C50396.

HYSTER XL2 10,000-LB. BASE CAP. MDL. S100XL, LPG., 3-stage mast, 162.5" lift ht., solid tires, S/N DC04V096325.

(2) TOYOTA 8,000-LB. BASE CAP. MDL. 7FGU35, new 2014, LPG, 187" max. lift ht., 89" 3-stage mast, side shift, pneumatic style tires, forks, S/N 72104 (5040 H.O.M.); S/N 72191 (4572 H.O.M.).

HYSTER 8,000-LB. BASE CAP. MDL. MS80XL, LPG., 7,350-lb. @ 24" L.C., 3-stage mast, 172" lift ht., solid tires, side shift, S/N D004D08004W.

HYSTER 13,500-LB. BASE CAP. MDL. S135XL, LPG., 7,100-lb. cap. @ 42" L.C., 2-stage mast, 141.5" lift ht., solid tires, S/N B024004618U.

HYSTER 6,000-LB. BASE CAP. MDL. H60FT, new 2013, LPG, 100" 2-stage mast, 156" max. lift ht., side shift, pneumatic style tires, S/N L177V14196L.

HYSTER 65 APPROX. 6,500-LB. BASE CAP., LPG., 3-stage mast, 190" lift ht., long forks, side shift, solid tires.

CLARK 6,125-LB. BASE CAP. MDL. CX400, LPG., 3-stage mast, 199" lift ht., side shift, dual front tires, S/N GX710U-0.

HYSTER 5,500-LB. BASE CAP. MDL. SS2000-5000, LPG., 3-stage mast, approx. 190" lift ht., solid tires, S/N 38-135691.

HYSTER 6,000-LB. BASE CAP. MDL. S60XL, LPG., 5,300-lb. @ 20" L.C., 3-stage mast, 189" lift ht., side shift, solid tires, S/N C187B02370N.

CATERPILLAR 5,000-LB. BASE CAP. MDL. 2P5000, new 2011, LPG, 88" 2-stage mast, 140" max. lift ht., pneumatic style tires, side shift, 48" forks, S/N AT3531793.

HYSTER 50 5,000-LB. BASE CAP., LPG, 3-stage mast, side shift, solid tires.

CLARK 5,000-LB. BASE CAP. MDL. CGC25, LPG, 3-stage mast, 189" lift ht., solid tires, side shift, S/N 365LI-0113-9516FB.

SCISSOR TYPE MANLIFT

JLG 750-LB. CAP. MDL. 2646E2, extendable platform, 26' max. platform ht., 26' max. travel ht., S/N 0200078503.



HYSTER 8,000 LB. BASE CAP. FORKLIFT



(1 OF 2) TOYOTA 8,000-LB. BASE CAP. FORKLIFTS

JLG 750-LB. CAP. SCISSOR TYPE MANLIFT



PARTIAL TERMS & CONDITIONS: A 15% Buyer's premium Will Apply On-Site. A 18% Buyer's Premium Will Apply to Webcast Bids. See Rules for Participation.

Everything will be sold to the highest bidder or bidders for cash in accordance with the auctioneer's Customary Terms of Sale, copies of which will be posted on the premises.

ALL PAYMENTS MUST BE MADE BY CASH, CASHIER'S CHECK, WIRE TRANSFER OR COMPANY CHECK WITH BANK LETTER GUARANTEEING PAYMENT TO PLANT & MACHINERY INC.

Here is an example of what your letter should be: Mr. "Customer Name" is a customer of this bank. This bank will guarantee unqualified payment to PMI on the account listed herein up to the amount of \$ _____. This letter is good until January 7, 2021.

In default of payment of bills in full within the time therein specified, the Auctioneer in addition to all other remedies allowed by law, may retain all monies received as deposit or otherwise, as liquidated damages. All items must be removed by the time announced at the start of the sale. Lots not paid for and/or removed within the time allowed may be resold at public or private sale without further notice, and any deficiency, together with all expenses and charge of resale, will be charged to the defaulting purchaser.

The buyer acknowledges that he or an agent has inspected all of the assets upon which he will be bidding and/or does purchase.

Buyer agrees to accept assets purchased "AS IS," WITH "ALL FAULTS" AND "WITH REMOVAL AT BUYER'S RISK AND EXPENSE." THE AUCTIONEER EXPRESSLY DISCLAIMS ON THE PART OF THE

AUCTIONEER AS AGENT AND THE SELLER, ANY WARRANTY AS TO FITNESS OR USABILITY OF ALL THE ASSETS, AND THE BUYER EXPRESSLY WAIVES ANY CLAIM IN RESPECT TO ANY POSSIBLE FUTURE USE OF ANY ASSET PURCHASED FOR ANY PURPOSE WHATSOEVER.

The buyer does hereby assume and does agree to indemnify and hold the auctioneer harmless from any future claim which shall pertain to the fitness or use of that asset as being purchased. Riggers, movers, electricians and buyers performing work at the Auction Site must provide PMI with evidence of insurance. The insurance coverage must be at a level acceptable to PMI and to the seller. PMI reserves the right to withdraw items, alter the order of the sale, accept bids from the seller, and group lots as it may deem appropriate. This auction may include consignment items.

Although all information has been obtained from sources deemed reliable, the auctioneer and seller make no warranty or guarantee, expressed or implied, as to the accuracy of the information herein contained, or contained in our catalog. It is for this reason that buyers should avail themselves of the opportunity to make inspection prior to the auction. Although it is not likely, auction sales are subject to cancellation or postponement. Kindly contact auctioneer prior to attendance.

These terms and conditions may be modified or supplemented by language in the catalog available at the sale site or by announcement at the start of the sale. Bidders should be attentive to those announcements and to the catalog language.

DIRECTIONS

FROM GEORGE BUSH INTERCONTINENTAL AIRPORT: Head West on Jetero Blvd./Will Clayton Pkwy. and continue for approx. 5 miles. Turn right onto Wilson Rd. for .6 miles. Turn Left onto Wilson Ct. Rd. and look for auctions signs on your left.

REGISTRATION

Bid on-line at: **BidSpotter.com**

1. Register to bid at BidSpotter.com. Use the link to BidSpotter on PMI's website calendar. DO IT NOW.
 2. This auction may require a credit or debit card 100% refundable deposit. Your credit/debit card added through the Bidspotter.com fully secure and PCI compliant registration process will be assessed a 100% refundable \$3,000 (US Bidder) or a \$10,000 (Foreign Bidder) deposit in order to be approved to bid online within this auction. **DON'T WAIT.** If you are unsuccessful in the auction, your card will be refunded of your deposit within 24 hours post auction.
- If you need assistance, don't hesitate to call (713) 691-4401. **ALL BIDS ARE SUBJECT TO AN 18% BUYER'S PREMIUM.**

DAY TWO: THURSDAY, DECEMBER 10 TIMED ONLINE ONLY BIDS START CLOSING: 10:00 A.M.



RAW MATERIAL

CONSISTING OF: Misc. Cut Outs, Stainless Steel.

PRECISION MACHINE ACCESSORIES.

LARGE CAP. ANGLE PLATES; HD FIXTURES; BORING BARS; ALORIS TOOLPOSTS AND HOLDERS; NAREX BORING HEADS; H.D. ANGLE MILLING ATTACHS.; RADIAL DRILL STYLE BOX TBLS.; KURT VISES; 3-JAW CHUCKS; 4-JAW CHUCKS; LARGE CAP. ROTARY MANUAL INDEXERS; SET-UP TOOLING; CAT-50 TOOLING; H.D. ANGLE PLATES; V-BLOCKS; BORING BARS; ROTARY TBLS.; MACHINE VISES; FIXTURING; 2-4-6 BLOCKS.

MACHINE SHOP ACCESSORIES

H.D. BORING BARS; LATHE TOOLING; SET-UP TOOLING; ENDMILLS; TURNING TOOLS; CHUCK JAWS; BULLNOSE CENTERS; LIVE CENTERS; DEAD CENTERS; BORING MILL TYPE JAWS, 3-JAW AND 4-JAW CHUCKS; ROLLER CARTS w/CAT-50 tooling; LONG BORING BARS; SPADE DRILLS; MILLING MACHINE COLLETS; HEAVY DUTY C-CLAMPS; ROTARY TBLS.; INDEXING TBLS.; V-BLOCKS; KNURLING ATTACHS.; RIGHT ANGLE ATTACHS.

TOOL CRIB

CONSISTING OF: Stenciling Machines, Collets, Hand Tools, Hammers, Files, Drills, Endmills, Iscar Tooling, Broaches, Spade Drills, Drills (New in Box), Twist Drills, Quick Grip Welding Clamps, C-Clamps, 4-Flute Drills.

BRAND NEW SHOP TOOLS

YUASA NO. 1 ARBOR PRESSES; YUASA NO. 0 ARBOR PRESSES; MACHINE VISES up to 10"; T-SLOTTED 2-AXIS COMPOUNDS; ASSORTED BESSY MACHINE VISES; WILTON MDL. 600 H.D. MACHINE VISES; CHUCKS (new in boxes); BISON ADAPTER PLATES (new in boxes); BULLNOSE CENTERS; CUSTOM STEADYRESTS; TOOLHOLDERS (some new in boxes); BISON 25" DIA. 3-JAW CHUCKS w/A15 mount and A11 mount (new in boxes); BISON 31-1/2" DIA. 4-JAW CHUCK w/10-1/2" spdl. bore; YUASA ROTARY TBLS. (new in boxes); BISON 6" MACHINE VISES.

MISCELLANEOUS SHOP SUPPORT EQUIPMENT

HUGE SELECTION GALBREATH 1 YD. CAP. DUMP HOPPERS; LIFTING MAGNETS; ROLLER DRAWER CABINETS w/carbide, lathe inserts, endmills, tooling, etc.; HARDWARE; ELECTRICAL COMPONENTS; SHOP SUPPLIES; HEAVY DUTY METAL TBLS. w/vises; DOUBLE END GRINDERS; RIGGING CHAINS; SHACKLES; STRAPS; WELDING SCREENS; BOTTLE JACKS; ROLLER STANDS; JACK STANDS; H.D. WELDING TBLS. w/vises; ROLLER CARTS; STOR-LOK MODULAR ROLLER DRAWER CABINETS w/misc.

thread mills, inserts, drill bits, carbide, machine accessories, etc.; ACCU-FINISH SERIES II CARBIDE GRINDER; BALDOR DOUBLE END GRINDER; TOOL PRESETTERS; H.D. TBLS.; LARGE CAP. DUMP HOPPERS; AIR GRINDERS; DRILL MOTORS; CUT-OFF SAWS; CHOP SAWS; HAMMER WRENCHES; (2) HIGH CUBE 40' SEA CONTAINERS; (2) 40' SEA CONTAINERS; 20' SEA CONTAINER; WESTWARD PARTS WASHER, 20 gal. cap.



2 BIG DAYS

DON'T MISS THIS SALE

PLANT & MACHINERY INC.

AUCTIONEERS • APPRAISERS • LIQUIDATORS • REAL ESTATE

P.O. Box 218568
Houston, TX 77218-8568

DATED MATERIAL - PLEASE DELIVER

DAY 1: LIVE ONLINE ON-SITE: WED., DEC. 9 • 10:00 A.M.

DAY 2: TIMED ONLINE AUCTION: THURS., DEC. 10 • 10:00 A.M.

PUBLIC AUCTION



**ATTENTION: PLANT MANAGER
OR EQUIPMENT BUYER**

Presorted
First Class Mail
U.S. Postage
PAID
Eugene, Oregon
Permit No. 17

HUGE OFFERING OF LATE MODEL CNC MACHINE TOOLS, MANUAL MACHINE TOOLS, & BORE CLADDING SYSTEMS

Featuring Toshiba CNC Horizontal & Vertical
Boring Mills as new as 2012; (6) Doosan Puma
700 & 800L CNC Lathes, (16) Arc Specialties
Bore Cladding Systems, (11) Kingston Lathes,
Huge Selection Tooling & Precision Machine
Accessories, (15) Forklifts, More!

PLANT AUCTION
HUMBLE, TEXAS



DOOSAN VM960 4-AXIS CNC
VERTICAL MACHINING CENTER



HAAS MDL. EC-1600 CNC
HORIZONTAL MACHINING CENTER



SAMPLE VIEW OF TOOLING



PARTIAL VIEW OF LARGE QUANTITY
BORE CLADDING SYSTEMS

CUSTOM CONFIGURED
CAR BOTTOM FURNACE

DON'T MISS THIS SALE



GAGEMAKER MICTRAC GAGE SETTING
MEASUREMENT SYSTEM



2 DAYS • 1 LOCATION • HUMBLE, TEXAS