

RENVILLE COUNTY

FARMLAND

Auction

LIVE ON-SITE AUCTION WITH ONLINE BIDDING

Fairfax, MN • Wednesday, September 1, 2021 • 11:00 a.m.

±142.72 Acre of Prime Renville County Farmland Located in Camp Twp, Section 11, T-112-N, R-33-W

Parcel 1: 84.02 Acres (81.5 +/- Tillable)
Located south of drainage ditch.

Parcel 2: 58.70 Acres (50.9 +/- Tillable)
Located north of drainage ditch to
Highway 19.

Land Location: Two miles west of Fairfax
at the southwest corner of the intersection
of Highway 19 and County 16. *Watch for
Henslin Auction Signs!*

**C.P.I. Rating = 92.7 (Good Heavy
Renville Co. Soils!)**

**Sugar Beets have never been
produced on this farmland!**

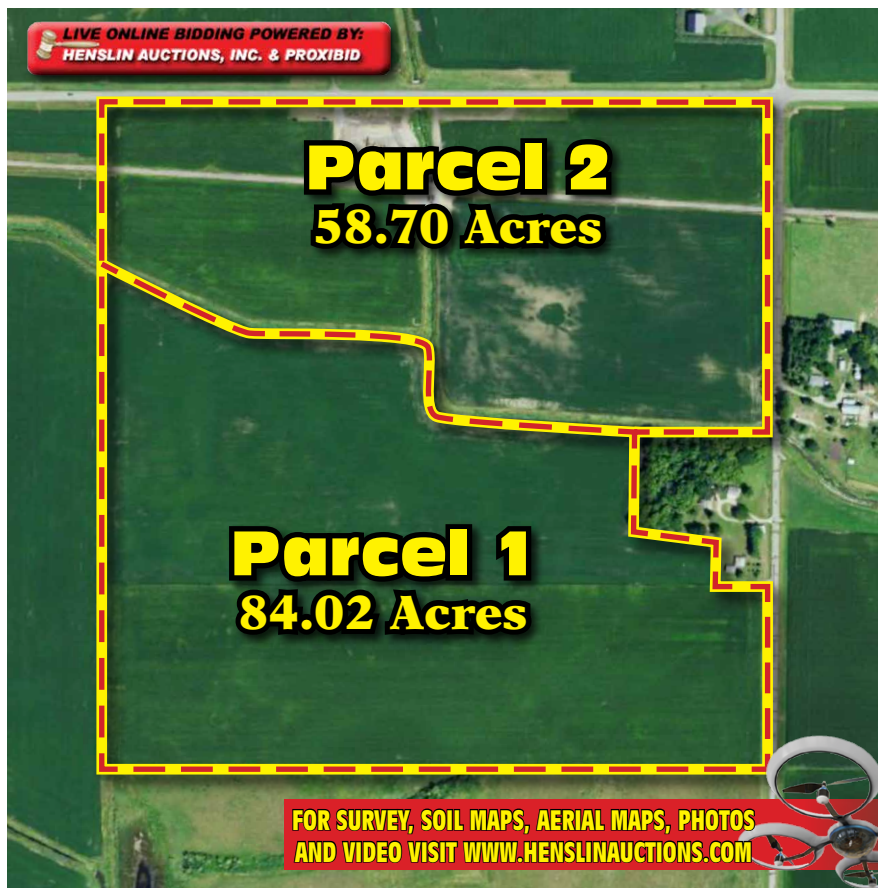
**Tar Road Access from Highway 19
& Renville County Road 16**

Both Parcels Have Been Surveyed!!

**All Parcels have Drainage
to Drainage Ditches!**

Auction Held At:

Fairfax Community Center
300 Park St S, Fairfax, MN 55332
(*Watch for Henslin Auction Signs!*)



FOR SURVEY, SOIL MAPS, AERIAL MAPS, PHOTOS
AND VIDEO VISIT WWW.HENSLINAUCTIONS.COM

Ben & Stella Zollner Estate & ZOLLNER FAMILY - OWNERS



Allen Henslin 65-57
LaDon Henslin
Brad Dallmann
Frank Roering
REAL ESTATE AGENT
Laura Posl
Rachel Orsten

Bird Island, MN (320) 365-4120

Call Today For
Your Auction!



Henslin Real Estate and Land, LLC Broker • Lic. #40452768

FOLLOW US



CALL HENSLIN AUCTIONS FOR LAND BOOKLET TODAY! (320) 365-4120

Auction Terms: To attend auction and receive a bidding number, buyers must present auction company with certified funds of \$30,000. These funds will be required as non-refundable earnest monies for this parcel at the time of signing the purchase agreement which will be immediately following the auction. Possession will be granted after the 2021 crop has been removed. Buyer's premium will apply. Mr. Paul C. Glaeser (Gibbon, MN) will be the seller's closing attorney. Closing will be on or before Tuesday, October 12, 2021. For more information, aerial drone videos and pictures, visit us at www.henslinauctions.com or call (320) 365-4120.

www.henslinauctions.com

Design and Print provided by greghepola@yahoo.com