

# AUCTION

EQUIPMENT/VEHICLES/TOOLS

Saturday, February 10<sup>TH</sup>

UPPER STATE FAIRGROUNDS

EASLEY, SC



ONLINE BIDDING AVAILABLE!!

**Johnny King**  
AUCTIONEERS, INC

Return Service Requested

PO Box 262

Ware Shoals, SC 29692

PRSRT STD  
U.S. POSTAGE  
PAID  
Greenville, SC  
Permit 1234

EQUIPMENT/  
VEHICLE/TOOL

# AUCTION

SATURDAY, FEB. 10<sup>TH</sup> 8:30 AM

3800 CALHOUN MEMORIAL HWY (HWY 123), EASLEY, SC

Upper State Fairgrounds (Behind G'ville/Pickens Speedway)

NOTE:  
Early Start  
Time!

FARM/CONSTRUCTION EQUIPMENT, CARS, TRUCKS  
TRAILERS, RECREATIONAL VEHICLES, TOOLS & MORE!!!!



#### EQUIPMENT CHECK-IN SCHEDULE FOR SELLERS:

MONDAY, FEBRUARY 5 – THURSDAY, FEBRUARY 8 9 AM – 5 PM

**\*\*NO ITEMS ACCEPTED ON FRIDAY UNLESS PRE-APPROVED.**

**DIRECTIONS:** From I-85, take Hwy 153 (exit 40) toward Easley. Go approx. 5.7 miles. Turn right on Hwy 123 toward Greenville. Go approx. 1.5 miles. Sale located on left behind G/P Speedway at Upper State Fairgrounds. From the intersection of Hwy 25 & Hwy 123, turn on Hwy 123 South toward Easley. Go 3.3 miles. Sale located on right. Watch for signs.

**TERMS & CONDITIONS:** All items are sold "as is, where is" with all faults, without warranty or guarantee of any kind. All items must be paid for in full immediately following the sale by cash, good check (personal and business checks will be accepted from customers w/established relationship w/auction company – ALL OTHER CHECKS WILL REQUIRE A BANK LETTER OF GUARANTEE TO JOHNNY KING AUCTIONEERS, INC.), or Visa/Master Card, American Express, Discover. A 10% buyer's premium will be added to all purchases. A 3% transaction fee will be added to all credit card purchases. A 7% SC/Pickens County sales tax will be added to all purchases unless buyer has a valid Resale Certificate.

**AUCTIONEERS' NOTE FOR BUYERS:** All buyers must show proof of insurance in order to drive a vehicle off the auction site. All titles will be mailed within 15 business days of the auction. All information on this brochure has come from reliable sources and is believed to be correct; however, buyer is responsible to inspect all items to determine the suitability of use and correctness of any pertinent information.

OCCASIONALLY, AN ITEM MUST BE REMOVED FROM THE AUCTION DUE TO CIRCUMSTANCES BEYOND OUR CONTROL. IF THERE IS A PARTICULAR ITEM IN WHICH YOU ARE INTERESTED, PLEASE CALL OUR OFFICE TO INSURE THAT THE ITEM HAS BEEN DELIVERED AND REGISTERED TO THIS AUCTION. **ALL ANNOUNCEMENTS MADE ON DAY OF AUCTION SUPERSEDE ANY PRINTED MATERIAL.**

**INTERNET BUYER'S TERMS & CONDITIONS:** A 12% buyer premium will be added to all purchases. Payments may be made by wire transfer, Visa/Mastercard, American Express, or Discover only. A 3% transaction fee will be added to all credit card purchases.

**ALL INVOICES MUST BE PAID ON AUCTION DAY UP TO \$1000.00. ALL CREDIT CARDS WILL BE CHARGED AT THE END OF THE AUCTION FOR ALL PURCHASES UP TO \$1000.00. ALL BIDDERS WITH INVOICES OVER \$1000.00 WILL NEED TO CONTACT 864.554.0929 OR EMAIL [johnny@jkauctions.com](mailto:johnny@jkauctions.com) TO MAKE PAYMENT ON REMAINING BALANCES WITHIN 48 HOURS. ALL BIDDERS THAT DO NOT MAKE CONTACT WITHIN 48 HOURS CONCERNING OPEN INVOICES OVER \$1000.00 WILL BE REPORTED AS NON PAYING BIDDERS TO PROXIBID. NO EXCEPTIONS.**

**AUCTIONEERS' NOTE FOR SELLERS:** Any vehicle registered to this auction must have seller's name and address showing on the front of the title. **ALL TITLED VEHICLES MUST BE ACCOMPANIED W/TITLES @ CHECK-IN. (NO EXCEPTIONS).** All sellers who wish to have their items available for online bidding must have them registered by 5 PM Thursday, February 8.

**WWW.JKAUCTIONS.COM**  
**864.456.7141 | Toll Free 866.243.1803**

Johnny King  
CAI, SCAL 2262

Justin King  
SCAL 4174

**NEXT 2 AUCTIONS**  
**March 24 — Anderson, SC**  
**May 5 — Inman, SC**

PREVIEW: FRIDAY, FEBRUARY 9<sup>TH</sup> 12PM – 5PM

ONLINE BIDDING AVAILABLE  
AT [JKAUCTIONS.COM](http://JKAUCTIONS.COM)





# EQUIPMENT/VEHICLE/TOOL AUCTION - SATURDAY, FEB. 10<sup>TH</sup> 8:30 AM

3800 Calhoun Memorial Hwy (Hwy 123), Easley, SC — Upper State Fairgrounds (Behind G'ville/Pickens Speedway)  
**Farm/Construction Equipment, Cars, Trucks, Trailers, Recreational Vehicles, Tools & More!!!!**

**NOTE  
EARLY  
START  
TIME**



## EARLY COMMITMENTS — MORE EXPECTED BY SALE TIME

### » CLASSIC

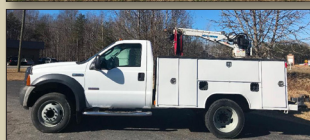
- **1962 CUSHMAN MOTORCYCLE** (gas, runs good)
- **1972 CHEV C10 PICKUP TRUCK** (AT, factory tach, 402 big block, AC, bucket seats, frame off in 1998-drove one year-put up in barn)

### » TRUCKS

- **2008 CHEVROLET SILVERADO 3500 LTZ PICKUP** (crew cab, AT, 6.6L Duramax diesel, 4x4, drw, longbed, sunroof, miles read 180562, VIN-1GCHK33628F152127)
- **2006 FORD F-550 XL SERVICE TRUCK** (auto Crane, AT, 6 speed manual transmission, 6.0L Powerstroke diesel, 9ft Rawson-Koenig bed, miles read 255927, VIN-1FDAF56P86EB34685)
- **2006 FORD F-150 XL PICKUP** (AT, 4.6L, 4x4, miles read 255188, VIN-1FTRF14W56KD15271)
- **2012 DODGE RAM 5500 HEAVY DUTY DUMP TRUCK** (AT, 4x4, 6.7L Cummins diesel, miles read 213975, VIN-3C7WDBL6CG230857, 12ft Steel Bed, drw)
- **2015 FORD F-350 XL SUPER DUTY SERVICE TRUCK** (AT, 6.2L gas engine, extended cab, 8ft Knapheide service bed, miles read 95657, VIN-1FD7X3A67FEC92641)
- **SPECIAL LANDSCAPE TRUCK - 2004 ISUZU CAB OVER SPRAY TRUCK** (Isuzu diesel, AT, miles read 102934, ready to work, 11.5ft fiberglass bed, VIN-JALC4B14347007311)
- **2013 DODGE RAM 3500 CREW CAB DUALY** (AT, 6.7L Cummins diesel, 4x4, long bed, miles read 153328, gooseneck hitch, VIN-3C63RRGL3D6564841)
- **1985 CHEVROLET DUMP TRUCK** (gas, 12ft steel bed, PTO dump, removable sides, 4 speed, drw, miles exempt)
- **1996 DODGE DAKOTA EXTENDED CAB PICKUP** (2 owner, 3.9L, miles read 147293, VIN-1B7GL23X0TS566503)
- **2003 FORD F-150 LARIAT CREW CAB PICKUP** (AT, 5.4L, cannot read miles, VIN-1FTRW07L93KB62580)
- **1978 CHEVROLET WRECKER** (350 engine, manual transmission, wreck master boom, drw, miles exempt, VIN-TCL338V558880)
- **1997 DODGE 3500 FLATBED TRUCK** (5 spd, Cummins diesel, ext cab, new trans, clutch paint, 373 gear, 225k miles)
- **1989 FORD F150 PKP TRUCK** (4x4, 5 spd W/OD, 5.0L V8, VIN-1FTEF14N8KNB42280)
- **2008 FORD F-450 LARIAT PKP TRUCK** (AT, 6.4L diesel, 4x4, crew cab, drw, miles read 219,190)

### » TRAILERS

- **2017 WOW 20 FT V-NOSE ENCLOSED CAR HAULER TRAILER** (20ft w/ 2ftv-Nose, 8ft W, 77.5 inch interior HT, tandem 5200lb brake axles, VIN-53FBE2026HF027994, 2 5/16 inch ball, led's)
- **2007 LAWRIMORE 20 FT EQUIPMENT TRAILER** (7 ton, 18ft deck, 2ft dove, 83 inches between fenders, 2 5/16 in ball, VIN-5WM8320E470003129)
- **2016 AMO GOOSENECK EQUIPMENT TRAILER** (25ft x 101 inches, 20ft deck, 5ft dove tail, 7 ton, dual jacks, like new, VIN-1A9G25146G1668885)
- **2005 HUDSON GOOSENECK EQUIPMENT TRAILER** (19ft x 96 inch, 16ft deck, 3ft dove tail, 6 ton, VIN-10HHSE18251000880)
- **2018 CLAYS 16 FT TRAILER** (tandem axle, 3500lb axles, radial tires, ramps)
- **2018 CLAYS 14 FT TRAILER** (single axle, ramp gate, 24 inch mesh sides, radial tires)
- **16 FT X 7 FT GOOSENECK TANDEM AXLE TRAILER- NO TITLE** (6 lug)
- **ADAM GOOSENECK STOCK TRAILER-NO TITLE** (T/A)
- **SPECIAL HOG TRAILER - 2012 EXISS ALL ALUMINUM SHOW HOG TRAILER** (20ft plus tack/living qtrs room)



### » CARS/VANS/SUVs

- **2005 CHRYSLER PT CRUISER CONVERTIBLE** (VIN-3C3EY55E65T285298, miles read 192,345)
- **1990 BUICK REGATTA** (AT, V6, miles read 105490, VIN-1G4EC13C7LB907633)
- **2002 ACURA 3.2 CL-S** (AT, 3.2 Vtec, miles read 278655, VIN-19UYA42632A003093)
- **2005 TRAILBLAZER** (AT, 4.2L, 4x4, miles read 158704, VIN-1GNET16S856153071)
- **1996 CHEVROLET TAHOE LT** (AT, 5.7L, miles read 213482, VIN-1GNEC13R1VJ302452)
- **1995 CADILLAC DEVILLE** (AT, 4.9L, miles read 159303, VIN-1G6KDS2B3SU267964)
- **2005 ACURA TL** (VIN-19UUA66235A05023)
- **2005 HONDA ACCORD EX - SALVAGE TITLE** (AT, 4 cyl., miles read 62000, sunroof, VIN-1HGCM56735A045066)
- **1997 JEEP WRANGLER** (V6, manual trans., 4x4, miles read 220798, soft top, VIN-1J4FY29P3VP436512)
- **SPECIAL DRAG CAR - 1987 FORD MUSTANG DRAG CAR** (fox body, 350 Chev trans, 3500 Stall converter, 355 Chev eng, 4.56 rear end, 28in x 9in slicks, turns in 7.80's-goes straight, no title)

### » CONSTRUCTION EQUIPMENT

- **2012 TEREX TSR-70 SKID STEER LOADER** (630+ hours, will be sold with bucket only, SN-ASVSR070VDWS00149, aux. hydraulics)
- **BOBCAT 853 SKID STEER LOADER** (hours read 1614, Isuzu diesel, SN-512818037, C-Series, 66 inch smooth bucket, aux. hydraulics)
- **BOBCAT T190 SKID STEER LOADER** (hrs read 2983, 4-n-1 bucket)
- **FORD 555B LOADER/BACKHOE** (one owner, upstate farmer)
- **CAT 303C CR MINI EXCAVATOR** (enclosed cab-heat/AC, 60in blade, 24in bucket, hrs read 4166, SN-BXT02845)

### » LIFTS

- **CLARK PROPANE FORKLIFT** (2000lb lift)
- **YALE LP FORKLIFT** (propane, 3 stage, solid tires, truck wt. 6116lbs, SN-N545416, 32 inch forks, side shift, hours read 22106)
- **YALE 4000 LB FORKLIFT** (2 stage, side shift, propane, SN-C810V021681, Model GLP040SVXNUSF084)
- **NISSAN 4000 LB FORK LIFT** (Model PJ02A20PV, Chassis # PJ02-19H5848, propane, solid tires/will run outside, max HT 130 in, 2 stage, wt 7150lbs)
- **SPECIAL-TO BE SOLD OFF-SITE – 4 POST LIFT** (20,000lbs, 220V, single phase) — Located in Pickens/Easley Area - Call 864-554-0929 to schedule a viewing

### » TRACTORS

- **FORD 4500 TRACTOR** (diesel)
- **JOHN DEERE 5045D TRACTOR W/ LOADER** (one owner, hours read 210, remotes, 6ft smooth bucket, SN-1PY5045DVCB006281)
- **JOHN DEERE 950 TRACTOR** (3 cyl. Yanmar diesel, hours read 1175, new tires, new paint, suitcase weights)
- **TAFE35 DI TRACTOR W/ LOADER** (3 cyl. diesel, hours read 532, power steering, 5ft bucket)

### » IMPLEMENTS/ATTACHMENTS

- **UNUSED LAND PRIDE 6 FT SOLID STAND SEEDER** (Model APS1572, 3 pt, SN-661597)
- **LANDPRIDE RCF 3010 10 FT PULL TYPE ROTARY MOWER** (only cut 50 acres, hydraulic lift, SN-983238)
- **MASSEY FERGUSON 8 FT GRAIN DRILL**
- **9 FT LONG 32 DISC PULL TYPE HARROW** (new discs)
- **UNUSED 4200 LB WALK THROUGH PALLET FORKS** (42")
- **UNUSED 6 FT SCRAPE BLADE** (3 pt)

- **10 FT HYDRAULIC BOX BLADE** (pull type, hydraulic lift/tilt)
- **UNUSED 66 INCH GRAPPLE BUCKET**
- **TONUTTI DMP-285 DISC CUTTER** (9ft cutting width)
- **5 FT ROLL OVER SCRAPE BLADE** (3 hp)
- **COMER 5 FT FINISH MOWER** (3 pt, drive shaft included)
- **TAYLOR WAY 6 FT FINISH MOWER** (3 pt, drive shaft included)

### » LANDSCAPE EQUIPMENT

- **FERRIS IS 1500Z COMMERCIAL ZERO TURN MOWER** (Kawasaki 25hp motor, hours read 837, 52 inch deck)
- **EXMARK NAVIGATOR COMMERCIAL ZERO TURN MOWER** (bagging system, 48 inch deck, hours read 1517)
- **FERRIS 36 HYDRO CUT WALK BEHIND COMMERCIAL MOWER** (36 in cut, 13 hp Kawasaki)
- **SPECIAL LANDSCAPE BUSINESS STARTER KIT** – landscape truck, 2 JD zero turn mowers, chain saws, weed eaters, blowers & more!! To Be Sold As A Whole (see website for detailed description)

### » RECREATION

- **2013 YAMAHA ELECTRIC GOLF CART** (48 Volt, 2016 Trojan batteries, lift kit, rear seat, new 14 inch wheels and tires, charger included)
- **2011 CLUB CAR PRECEDENT ELECTRIC GOLF CART** (48 Volt, 2015 Trojan batteries, new 14 inch wheels and tires, lift kit, flip rear seat)
- **2013 CLUB CAR PRECEDENT ELECTRIC GOLF CART** (48 Volt, 2015 batteries, custom hydro dip, lift kit, new 14 inch wheels and tires, flip rear seat, charger included)
- **2011 CLUB CAR PRECEDENT ELECTRIC GOLF CART** (48 Volt, 2014 batteries, lift kit, new 14 inch wheels and tires, charger included)
- **2007 CLUB CAR PRECEDENT ELECTRIC GOLF CART** (48 Volt, lift kit, charger included)
- **JOHN DEERE GATOR** (diesel, dump bed)

### » MISCELLANEOUS

- **2016 CUMMINS 400 HP DIESEL ENGINE W/FRAME** (222,000 miles)
- **EATON FULLER AUTOMATIC TRANSMISSION FOR 2016 CUMMINS 400HP DIESEL ENGINE** (FM-15E310B-LAS, 10 spd, 200k miles)
- **JEEP TRUCK MOTOR**
- **CUSTOM STEEL COOKER/ SMOKER ON CUSTOM TRAILER** (gas, charcoal, or wood)
- **HYDRA CELL HYDRAULIC PUMP** (Model D10XLCTHFECA,)
- **HYDRA CELL HYDRAULIC PUMP** (Model 157LBNHFECA)
- **BADLANDS 9000 LB OFF-ROAD VEHICLE WINCH W/LOAD HOLDING BRAKE** (unused)
- **(2) SQUARE D TRANSFORMERS - 15KVA - 240/480HV, 1 20x240LV, HVAMPS 62/31, LVAMPS 124/62, 215 LB EACH - INCLUDES BREAKER PANEL AND SAFETY SWITCH. SQUARE D CAT#15S1H, STYLE 12751-12612-002.**
- **(1) 300 FEET - 00/3 + GROUND ELECTRICAL CABLE - NO TERMINALS**
- **(1) - 75 FT 8/3 ELECTRICAL CABLE - 1 TERMINAL 250V/20A**
- **(1) - 100 FT 10/4 ELECTRICAL CABLE - NO TERMINALS**
- **(1) - 100 FT 10/3 ELECTRICAL CABLE WITH- 250V/20A TERMINALS**
- **(1) - 200 FT 10/3 ELECTRICAL CABLE WITH 250V/20A TERMINALS**
- **(2) - 245 FT 10/3 ELECTRICAL CABLE- NO TERMINAL**

### » TOOLS

- **ALL POWER 7500W GENERATOR** (electric start)
- **CRAFTSMAN RADIAL ARM SAW**
- **TARGET MASONRY SAW** (20gm31, Gaurdmatic, 115/230v, 28/14 amp, 3 HP, 14" blade has segment missing, 20 in blade capacity, foot operated up/down movement)

- **(2) CONCRETE FLOOR SCABBLER** (5 head, John Macdonald - Macdonald Air Products - Model 5U)
- **EDCO CPE-X CONCRETE/ASPHALT SCARIFIER PLANER** (9 in path, 220V, 21 amp, 5 HP, single phase)
- **OZTEC DG10 CONCRETE FLOOR GRINDER** (220v, 60 amp, single phase, (2) 10 x 20 segment diamond blades needs electrical control contacts replaced in electrical panel for right motor but otherwise runs)
- **ADVANCE BIG 5 CONCRETE FLOOR GRINDER** (104/208v, 20/10 amp, runs good)
- **CONCRETE FLOOR GRINDER/EDGER/BORDER** (114/208V, 20/10A, Peerless electric motor BH184F runs good)
- **SKOOKUM T-12A MULTI-PURPOSE BLOCK** (32,000lb safe working load)
- **(2) 12 X 2 SHEAVE** (For 3/4 - 7/8 Line 69lb. ea.)

**MORE EXPECTED BY SALE DAY  
CHECK WEBSITE FOR DAILY UPDATES**

