



# AUCTION

**3 DAYS - 3 LOCATIONS - HOUSTON & CONROE, TEXAS**

HUGE QTY. OF MACHINE TOOLS; FABRICATING EQUIP.; DRILLING RIG & OILFIELD EQUIP.; LARGE CAP. MATERIAL HANDLING EQUIP.; ROLLING STOCK; PLANT SUPPORT EQUIP.; PARTS INVENTORY; MUCH MORE!

**2013**



HAAS VS-3 4-AXIS VERT. MACHINING CENTER

**LARGE  
CAPACITY**

## DAY ONE

At the Premises of

**APPLIED MACHINERY CORP.**

6545 NORTH ELDRIDGE,  
HOUSTON, TEXAS 77041

**TUESDAY, APRIL 2 • 10:00 A.M.**

**INSPECTION:** Monday, April 1, 9:00 A.M. to 4:00 P.M.

## DAY TWO

At the Premises of

**APPLIED MACHINERY CORP.**

7605 WRIGHT ROAD,  
HOUSTON, TEXAS 77041

**WEDNESDAY, APRIL 3 • 10:00 A.M.**

**INSPECTION:** Monday, April 1 & Tuesday,  
April 2, 9:00 A.M. to 4:00 P.M.

## DAY THREE

At the Premises of

**APPLIED  
MACHINERY CORP.**

14737 FIRETOWER ROAD  
CONROE, TEXAS 77306

**THURSDAY, APRIL 4  
10:00 A.M.**

**INSPECTION:** Monday, April 1, Tuesday,  
April 2 & Wednesday, April 3,  
9:00 A.M. to 4:00 P.M.



COLE-TUVE 10' X 1/2" HYD. PLATE BENDER

**2012**



PORTABLE WELDING RIGS

**AS NEW AS  
2018**

**BUYER'S PREMIUM: 15% ON-SITE • 18% WEBCAST**

Read Partial Terms and Conditions on Back Page of Brochure

**On-Site Bidding in Houston & Conroe, Texas or Bid Via Webcast at [BidSpotter.com](http://BidSpotter.com)**

Sale Conducted By:

**PLANT & MACHINERY INC.**

AUCTIONEERS • APPRAISERS • LIQUIDATORS • REAL ESTATE

Ron Moore, Texas Lic. #7314

HOUSTON • DALLAS • ST. LOUIS

Headquarters:

1304 Langham Creek Drive, Suite 454  
Houston, Texas 77084

PHONE: (713) 691-4401

FAX: (713) 672-7905

E-MAIL: [pmi@pmi-auction.com](mailto:pmi@pmi-auction.com)  
WEBSITE: [www.pmi-auction.com](http://www.pmi-auction.com)

2013

LARGE  
CAPACITY

HAAS VS-3 4-AXIS VERT. MACHINING CENTER

2006



HAAS VF6/50 4-AXIS VERT. MACHINING CENTER

## VERTICAL MACHINING CENTERS

**HAAS MDL. VS-3**, 4-axis bed type, new 4/2013, 40" x 146" tbl., 150" X, 50" Y, 50" Z-axis travels, CAT-50, 7,500 RPM, 30 HP, 30-pos. ATC, Renishaw part probing, tool touch probe, arranged for 4th axis, S/N 2054089.

**HAAS MDL. VF6/50**, new 7/2006, 28" x 64" tbl., 64" X, 32" Y, 32" Z-axis travels, CAT-50, 7,500 RPM, 30 HP, 30-pos. ATC, thru spdl. coolant, arranged for 4th axis, programmable coolant nozzle, S/N 1050062.

**(3) HAAS MDL. VF3YT/50**, as new as 2013, 24" x 54" tbl., 40" X, 26" Y, 25" Z-axis travels, CAT-50, 7,500 RPM, 30 HP, 30-pos. ATC, programmable coolant nozzle, arranged for 4th axis, Renishaw probe, thru spdl. coolant, S/N 1107129 (9/2013), S/N 1084015 (4/2011), S/N 1053720 (11/2006).

**MORI SEIKI MDL. MV55**, Fanuc 10M CNC control, 30-pos. ATC, drilled and tapped sub-plate, S/N 1353.

## CNC LATHES

**(2) HAAS MDL. SL40**, as new as 2010, 40" max. swing, 25" turn dia., 44" turn length, 4.6" bore, 2,400 RPM, 55 HP, 10-pos. turret, chip conveyor, tool presetter, tailstock, 15" hyd. chuck, S/N 3086770 (9/2010), S/N 3084311 (3/2009).

**(2) HAAS MDL. SL30TB BIG BORE**, new 7/2006 and 3/2005, 30" max. swing, 16" turn dia., 34" turn length, 4.6" bore, 2,400 RPM, 30 HP, 10-pos. turret, tailstock, 15" hyd. chuck, tool presetter, chip conveyor, S/N 73727 (2006), S/N 69781 (2005).

**EXCEL (CSPCL) MDL. SLT-800/2500B**, new 2007, Fanuc Oi-TC CNC control, 33.46" swing over bed, 28.34" turn dia., 100" dist. btwn. centers, 5.9" bore, 2,200 RPM, 60 HP, 12-pos. turret, 24" dia. 3-jaw hyd. chuck, tailstock, steady rest mount, S/N SL-T8-0106.

## CNC HOLLOW SPINDLE LATHE

**HAAS MDL. TL4**, new 10/2008, Haas CNC control, approx. 35" swing over front apron, 16" swing over cross slide, 91" dist. btwn. centers, 10.81" spdl. bore, 500 RPM, 55 HP, 24" dia. front and rear 4-jaw chucks, (2) steady rests, chip conveyor, S/N 3081466.

## CNC HORIZONTAL BORING MILL

**NOMURA MDL. HBA-110T-R3**, new 7/2008, Fanuc 16i-MB CNC control, 55" x 63" built-in rotary tbl., 15,400-lb. tbl. load, 78.7" X, 60" Y, 55.1" Z, 19.7" W-axis travels, 4.3" spdl. dia., CAT-50, 4,000 RPM, 30 HP, 40-pos. ATC, S/N 5324.

## HORIZONTAL BORING MILLS

**TOSHIBA MDL. BFT-13CW3PD**, 59" x 118" plain tbl., 22,000-lb. tbl. load, 118" X, 82.7" Y, 51.2" Z, 35.4" W-axis travels, 5.13" spdl. dia., 1,200 RPM, 25 HP, S/N 153367.

**(2) NOMURA MDL. B100-SR**, 45" x 50" rotary tbl., 11,000-lb. tbl. load, 60" X, 47.6" Y, 43" Z, 26" W-axis travels, 3.94" spdl. dia., CAT-50, 1,200 RPM, 20 HP, ball screws, S/N 3790, S/N 3918.

## CNC ROTARY TABLES

**HAAS 18" MDL. HRT-450**, 7-1/4" thru hole, tailstock, S/N N.A.

**HAAS 12" MDL. HRT310**, Version P3, tailstock, S/N 317651.

## DAY ONE

2011



HAAS VF-3YT/50 4-AXIS VERT. MACHINING CENTER

2008



HAAS TL-4 HOLLOW SPINDLE CNC LATHE

2009



HAAS SL-40 CNC LATHE





**LARGE  
CAPACITY**

At the Premises of  
**APPLIED  
MACHINERY  
CORP.**  
6545 NORTH ELDRIDGE  
HOUSTON,  
TEXAS 77041

**INSPECTION:**

Monday, April 1,  
9:00 A.M. to 4:00 P.M

**GIDDINGS & LEWIS 96"  
VERT. BORING MILL**



**2008**

**NOMURA MDL. HBA-110T-R3 CNC HBM**

**TUESDAY, APRIL 2 AT 10:00 A.M.**

**VERTICAL BORING MILL**

**GIDDINGS & LEWIS HYPRO 96"**, approx. 104" swing to column, approx. 96" under rail, twin boring rams, side head w/4-pos. turret, (4) boring mill jaws, approx. 50 HP drive motor, pendant control, S/N 7870.

**VERTICAL TURRET  
MILLS**

**SUPERMAX MDL. YC-2VAS**, 3-way pwr. knee, 11" x 51" tbl., hardened and ground ways, approx. 3 HP spdl. drive motor, spds.: 75-1,220 RPM, S/N 02749.

**(2) BRIDGEPORT SERIES 1**, 9" x 48" tbl., pwr. feed, chrome ways, 3 HP drive motor, S/N 276806, S/N 259340.

**RADIAL ARM DRILL**

**CARLTON 6' X 15"**, spds.: 10-1,000 RPM, pwr. head traverse, 15 HP drive motor, S/N 3A4599.

**HOLLOW SPINDLE  
LATHE**

**KINGSTON 30" X 120" MDL. HK3000 OIL COUNTRY**, new 2007, 30" swing over bed, 20.75" swing over cross slide, 12-1/2" bore, 5-300 RPM, 20 HP, 24" front and rear hollow spdl. chucks, inch/metric thdng., taper attach., Newall D.R.O., S/N 3M951027S.

**ENGINE LATHES**

**RYAZAN 32" X 196" MDL. 16K40-5**, new 2004, 4-1/4" spdl. hole, spds.: 10-1,250 RPM, inch/metric thdng., taper attach., steady rests, S/N 1446 (\*Note: currently inoperable).

**DAINICHI 29.5" X 137" MDL. DHK75-3.5C**, 21" swing over cross slide, 3.5" bore, 14-1,250 RPM, 20 HP, S/N 13662.

**PRATT & WHITNEY 16" X 78"**, spds.: 14-1,000 RPM, 2" spdl. hole, steady rest, 3-jaw chuck, S/N N.A.

**CLAUSING COLCHESTER 15" X 50"**, spds.: 25-2,000 RPM, 2-1/2" spdl. hole, S/N LTP50SLCV/31992.

**GAP BED ENGINE LATHES**

**POREBA MDL. TR135B/4M**, 53.14" swing over bed, 64" swing in gap, 40.15" swing over cross slide, 157" btwn. centers, 4.72" bore, spds.: 5-500 RPM, 50 HP, pwr. compound, 49" dia. 4-jaw chuck, S/N 7402-01-090022-08.

**KINGSTON 26" X 60" MDL. HD2660**, new 2005, approx. 18" swing over cross slide, 4.15" spdl. hole, spds.: 13-1,200 RPM, taper attach., 15" dia. 3-jaw chuck, S/N CH04166.

**NARDINI 25" X 80" MDL. SZ2580**, approx. 18" swing over cross slide, 3.15" spdl. hole, spds.: 19-1,500 RPM, inch/metric thdng., taper attach., steady rest, 2-axis D.R.O., 15" dia. 3-jaw chuck, S/N N.A.

**KINGSTON 22" X 120" MDL. HD22120**, new 2005, approx. 14" swing over cross slide, 4.15" spdl. hole, spds.: 20-1,200 RPM, taper attach., 15" dia. 3-jaw chuck, S/N CH05857.



**TOSHIBA 5" HORIZ. BORING MILL**

**3  
BIG  
DAYS**



**BRIDGEPORT  
SERIES 1  
VERT.  
TURRET MILL**



**12.5"  
BORE**

**2007**

**KINGSTON OIL COUNTRY LATHE**



**CARLTON 6' X 5" RADIAL ARM DRILL**



2017



REDROCK 10'X10' SUB-ARC MANIPULATOR



AS NEW AS  
2014

LARGE  
QUANTITY

VIEW OF LINCOLN MDL. CV305 MIG WELDERS



## DAY ONE



MILLER SYNCROWAVE 350 LX  
TIG WELDER

At the Premises of  
**APPLIED  
MACHINERY  
CORP.**  
HOUSTON, TX 77041

### WELDING MANIPULATOR

**REDROCK**, new 2017, approx. 10' ht. x 10' reach, plate mtd. base, swivel column, Lincoln Mdl. NA-3N weld controls, sub-arc wire feed unit, Weld Engineering flux box, Lincoln Mdl. DC1000 welding pwr. supply, 1,000 amps @ 44 v., 100% duty cycle, pendant control, S/N U1170706225.

### SHEAR

**ADIRA MDL. GH00630E**, new 1988, 10'-3/8" cap., front operated pwr. backgauge w/indicator, S/N 1622/4855.

### SEMI-AUTOMATIC SAW

**W.F. WELLS 15" X 17" MDL. F15**, 1" blade, H.D. pwr. roller conveyor infeed, S/N A838F75930.

### PANTOGRAPH TORCH CUTTERS

(2) **KOIKE MDL. IK54-D**, 1/4"-4" cutting cap., variable cutting spds., portbl. mtd., S/N 094437, S/N N.A.

### PORTABLE PLASMA CUTTERS

**THERMAL DYNAMICS PROFESSIONAL MDL. 52 CUTMASTER**, on stand.

**LINCOLN MDL. TOMAHAWK 1000**, on fabricated stand.

### MIG WELDERS

**LINCOLN MDL. POWERWAVE 455M/STT**, 450 amps @ 36 v., 100% duty cycle, Powerfeed Mdl. 10M wire feeder, S/N U1081204393.

(23) **LINCOLN MDL. CV305**, as new as 2014, 315 amps @ 32.6 v., 100% duty cycle, Mdl. LF72 wire feeder, S/N U1060402981 (2011), S/N U1110809661 (2006), S/N U1080309873 (2008), S/N U1141012570 (2014), S/N U1110604674 (2011), S/N U1080309868 (2008), S/N 1060402978 (2006), S/N U1110901923 (2011), S/N U1110509051 (2011), S/N U1110512303 (2011), S/N U10650709966 (2005), S/N U1110600839 (2011), S/N U1110907508 (2011), S/N U1110509048 (2011), S/N U1110600828 (2011), S/N U1110904800 (2011), S/N U1110604670 (2011), S/N U1050627251 (2005), S/N U1110509046 (2011), S/N U1110604672 (2011), S/N U1110600838 (2011), S/N U1110600830, S/N U1110600837 (no wire feeder).

### LOAD BANK WELDERS

(2) **MILLER MDL. MARK VIII-2**, (8) single modules are 200 amps @ 40 v., 60% duty cycle, total is 1,600 amps @ 25% duty cycle, 800 amps @ 100% duty cycle, skid frame mtd., S/N KK077684, S/N KJ077110.

### TIG WELDER

**MILLER MDL. SYNCROWAVE 350LX**, running gear, TIG torch, cooler base, S/N LH10051L.

### STICK WELDERS

**LINCOLN MDL. IDEALARC 250 AC/DC**, welding leads, S/N U1140608100.

**MILLER MDL. SRH444**, 400 amps @ 36 v., 100% duty cycle, S/N KB168132.

**TUESDAY, APRIL 2 AT 10:00 A.M.**



WELLS 15" X 17" HORIZ. BANDSAW



ASSORTED ABRASIVES



RIDGID 4" PIPE THREADER



2,500  
KVA

LARGE  
CAPACITY



CUMMINS ONAN PORTABLE GENERATOR SET



1,000 HP DC MOTORS

### MISCELLANEOUS MACHINERY

**BELLAIRE 2-STAGE RECIPROCATING TYPE AIR COMPRESSOR**, 10 HP motor, 90 gal. horiz. tank; **(2) RIDGID 4" MDL. 1224 PIPE THREADERS**, pipe-cut, interchangeable threading heads, reamer and stand; **KALAMAZOO 20" ABRASIVE CUT-OFF SAW**, fabricated frame; **BENCH GRINDER**, 1/2 HP motor, fabricated frame; **6" HORIZONTAL BELT SANDER** on fabricated frame; **GOODYEAR MDL. PERMA-CRIMP PC125 HYDRAULIC HOSE CRIMPING SYSTEM**, integrated pwr. supply, Collet Crimp Mdl. T400, w/separated pwr. supply, mtd. to steel tbl., assorted bushings.

### MISCELLANEOUS SHOP & WAREHOUSE EQUIPMENT

**DEWALT 16" METAL CUTTING CHOP SAWS**; **MATHEY DEARMAN 14" CIRCULAR PIPE BEVELLER**; **ELECTRIC 3/4" DRILLS**; **6" RIGHT ANGLE GRINDER**; **FASTENERS**; **FITTINGS**; **LUBRICANTS**; **CHAIN**; **HOSE**; **WELDING GAUGES**; **WELDING WIRE**; **HEAT GUNS**; **TRACK TORCH TRACK**; **RIDGID THREADING HEAD**; **RIDGID MANUAL THREADING HEADS** up to 3"; **ABRASIVE FLAP WHEELS**; **WELDING WIRE**.

### MACHINE SHOP ACCESSORIES

**(11) KURT 6" MILLING VISES**; **YUASA 12" SUPER SPACER INDEXER**; **PHASE 2 12" SUPER SPACER INDEXER**; **CLAMPING KITS**; **R-8 COLLETS**; **DRILL CHUCKS**; **BORING HEADS**; **TOOL CART** w/#50 NST taper toolholders; **(100's) OF CAT-50 TOOLHOLDERS**; **END MILLS HOLDERS**; **SHELL MILL HOLDERS**; **COLLET HOLDERS**; **FACE MILL HOLDERS**; **HEAVY DUTY BORING BARS** up to 3" dia.; **INTERCHANGEABLE HEAD BORING BARS**; **1" AND 1-1/2" TURNING TOOLS**; **INDEXABLE DRILLS** up to 4"; **SPADE DRILLS** up to 4"; **DORIAN QUICK CHANGE TOOLPOSTS** w/assorted holders; **LIVE AND DEAD CENTERS**; **39-1/2" X 39-1/2" X 39-1/2" DRILLED AND TAPPED TOMBSTONE**; **LARGE TILTING BOX TBL.**; **HUGE ASSORTMENT OF CHUCKS**.

### MOTORS

**G.E. MDL. 5GE822-D4 DRILLING MOTOR**, 1,400 shaft HP, 800 rated RPM, skid frame mtd., S/N RR12030031.

**TOSHIBA MDL. DR900 DC MOTOR**, Type MSC-KBKV, 900 HP, 1,000 RPM, S/N 8016620.

**(8) GULF ELECTROQUIP MDL. 752AR2-A DC DRILLING MOTORS**, 1,000 HP, blower units.

### LARGE CAP. PORTABLE GENERATOR SET/ TEST STAND

**CUMMINS ONAN 2,500 KVA MDL. DQKC-4486310**, Cummins 12-cyl. diesel engine, 2,000 kW, 3-phase, 2,500 KVA, 1,800 RPM, Power Command digital controls, Cutler Hammer power line switch board, noise enclosure, skid mtd., S/N 1000155267, w/test stand, control console, transformer, switch gear.

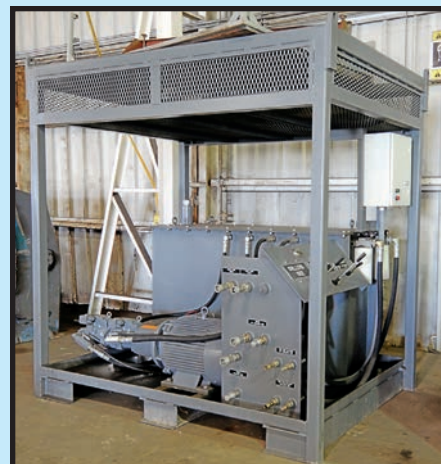
### ASSORTED OILFIELD RELATED EQUIPMENT

**VALVES**; **STUB SYSTEMS**; **SLIPS** up to 250 T. cap.; large dia. pulleys; **NATIONAL SUPPLY DRAW WORKS COMPONENTS PARTS IN REBUILD**; **FLENDER K3DH-121 MAIN HOIST GEARBOX**, S/N 4296022-0020-3.

### HYDRAULIC POWER SUPPLIES

**CUSTOM DIESEL POWERED**, John Deere, PowerTech 4.5 liter diesel engine, large hyd. reservoir, outlet manifold w/(14) quick connect outlets, assorted valves, skid frame mtd.

**CUSTOM ELECTRIC POWERED**, 75 HP motor, large reservoir, for drillers station, directional control valves, quick connect output/inputs, skid frame mtd., for drillers station.



ELECTRIC-POWERED HYD. POWER SUPPLY



FLENDER HEAVY DUTY GEAR BOX

## DAY ONE



MOTORS ON SKIDS



## DAY ONE

At the Premises of

# APPLIED MACHINERY CORP.

6545 NORTH ELDRIDGE  
HOUSTON, TEXAS 77041

**TUESDAY, APRIL 2  
10:00 A.M.**



GENIE MDL. GS2568  
SELF-PROPELLED SCISSOR LIFT

**2006**



**LARGE  
CAPACITY**

TAYLOR 45,000-LB. CAP. DIESEL FORKLIFT

## SELF-PROPELLED SCISSOR LIFT

GENIE MDL. GS2568, new 2006, 300-lb. platform cap., gas/LPG pwr., 4-wheel drive, extended pulpit, S/N GS6806-44963.

## TELESCOPING PLATFORM LIFTS

GENIE MDL. S60, new 2000, 600-lb. work load, 4-wheel drive, gasoline pwr., 60' platform ht., 51'-3" max. platform reach, S/N S60-6267 (\*Note: currently out of service).

TEREX MDL. TB44, diesel engine, 600-lb. platform wt., 44' max. platform ht., 37' max. platform reach, S/N 99610118.

JLG MDL. 40H, new 1977, diesel engine, 500-lb. platform wt., 40' max. lift, 33' max. reach, S/N 047752.

## PORTABLE LIGHT TOWER

DOOSAN MDL. LSC, diesel pwr., single axle trailer mtd.

## PORTABLE GENERATOR

WACKER MDL. G25, diesel pwr., 18 kW, 23 KVA, 208/480 v., 62/27 amps, mtd. to single axle trailer frame, S/N 5403916.

## NARROW AISLE FORK TRUCK

HAILE MASTER 4,400-LB. CAP. MDL. 44S, new 2003, 4,400-lb. @ 24" L.C., 204" max. lift ht., S/N 1603006.

## FORKLIFTS

TAYLOR 45,000-LB. CAP. MDL. 450M, 45,000-lb. cap. @ 36" load center, 15' lift ht., 168" lowered ht., Cummins diesel, powershift transmission, side shift, fork positioners, 93" forks, cab w/heat and A/C, S/N P30318 (2002).

TAYLOR 35,000-LB. CAP. MDL. THX350L, new 2012, 35,000-lb. cap. @ 48" load center, 2-stage mast, 184" max. lift ht., Cummins diesel engine, solid tires 1200 x 20, 24 ply 130 pressure, 8"W. x 8"L. forks, side shift, 1370 HOM, S/N SCH37637.

TAYLOR 30,000-LB. CAP. MDL. TE300S, diesel pwr., 28,875-lb. cap. @ 24" load center, 20,100-lb. @ 36" load center, 132" max. lift, 100"W. fork carriage, dual front pneu. tires, S/N S-H3-17609.

TAYLOR 18,000-LB. CAP. MDL. THD180, 18,000-lb. cap. @ 24" load center, 15' lift ht., 157" lowered ht., Cummins diesel, powershift transmission, 92" forks, side shift, fork positioners, cab, 9190 H.O.M., S/N 26574.

TAYLOR 16,000-LB. CAP. MDL. TE160S, 16,000-lb. cap. @ 24" load center, 15' lift ht., 157" lowered ht., side shift, fork positioners, 92" forks, Cummins diesel, powershift transmission, 67 H.O.M. (has rolled over on the meter), S/N 23020.

DAEWOO 6,000-LB. CAP. MDL. G30S-3, 186" max. lift ht., 83" 3-stage mast, LPG, side-shift, pneu. tires, 48" forks, S/N 99-00608.

(2) TOYOTA 3,000-LB. CAP. MDL. 8FGCU15, new 2013, 84" 2-stage mast, LPG, cushion tires, 42" forks, S/N 21287, S/N 21307.

YALE 3,000-LB. CAP. MDL. GLC030, 84" 2-stage mast, LPG, cushion tires, 42" forks, S/N A809N06145V.

## MATERIAL HANDLING EQUIPMENT

(3) MAG-MATE 5,000-LB. CAP. PERMANENT MAGNET LIFTING UNITS; MAG-MATE 2,500-LB. CAP. PERMANENT MAGNET LIFTING UNIT; ASSORTED CLEAVES; LEVER HOISTS up to 3 T. cap.; SELECTION OF HEAVY DUTY GALVANIZED PORTABLE SCAFFOLD, various components, w/approx. 20' ht.; PARKER HYDRAULIC FLUID FILTRATION SYSTEMS on portable cart; ENERPAC HYDRAULIC JACKS AND POWER SUPPLIES; FLOOR CIRCULATING FANS up to 48" dia.



**2012**

TAYLOR 35,000-LB. CAP. DIESEL FORKLIFT



**2003**

### INSPECTION:

Monday,  
April 1,  
9:00 A.M.  
to 4:00 P.M.

HAILE MASTER  
4,400-LB.  
FORKLIFT

**On-Site Bidding in Houston & Conroe, TX  
or Bid Via Webcast at [BidSpotter.com](http://BidSpotter.com)**



DOOSAN LIGHT TOWER

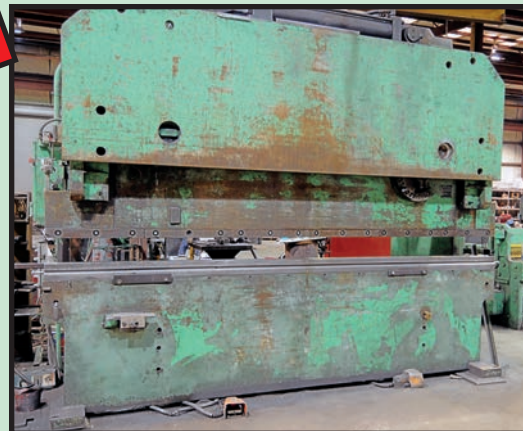


WACKER MDL. G25 DIESEL GENERATOR





COLE-TUVE 10' X 1/2" HYD. PLATE BENDER



HTC 200-TON X 12' HYD. PRESS BRAKE

## DAY TWO

**INSPECTION:** Monday, April 1 &  
Tuesday, April 2,  
9:00 A.M. to 4:00 P.M.

At the Premises of

## APPLIED MACHINERY CORP.

7605 WRIGHT ROAD, HOUSTON, TX 77041

**WEDNESDAY, APRIL 3 • 10:00 A.M.**

### HYDRAULIC 4-ROLL PLATE BENDER

COLE-TUVE (SAHINLER) MDL. 4RS-10-280, new 2012, 10'-1/2" cap. mild steel, digital roll position indicators, S/N SZ-230816.

### PRESSBRAKES

HTC 200 T. CAP. HYDRAULIC, 12' length of ram and bed, 4-way die, front operated backgauge, assortment of pressbrake dies, S/N N.A.

CHICAGO DREIS & KRUMP 90 T. CAP. MDL. 1012L MECHANICAL, 10'-6" dist. btwn. housings, motorized ram adj., S/N L15633.

### POWER SQUARING SHEARS

WYSONG 12', approx. 1/2" cap., 20 HP drive motor, rear operated manual backgauge.

WYSONG 48" X 12 GA. MDL. 125, manual rear backgauge, S/N P13-968.

### AUTOMATIC HORIZONTAL BANDSAW

HYD-MECH MDL. S23A MITERING, 16"H. x 20"W. cap. @90 deg., 1-1/4" blade, 750350 SFM, 8.8 HP, H.D. infeed roller conveyor, S/N XA0901190.

### SEMI-AUTOMATIC HORIZONTAL BANDSAW

HEM CYCLONE, new 2007, 1-1/4" blade, 7-1/2 HP motor, infeed roller conveyor, S/N 1000207.

### COLD SAWS

TRENNJAEGER PROMACUT LARGE CAP., heavy duty infeed and outfeed conveyor, hyd. hold-downs (installed next door to sale site, to be sold by photo).

TRENNJAEGER MDL. PMC8, 24" segmented blade dia., hyd. hold-down, H.D. 36"W. roller conveyor infeed, S/N GD183.

### PIPE THREADER

RIDGID 4" MDL. 1224, 12/36 RPM, 2-1/2"-4" pipe threading head, 1/8"-2" pipe threading head, pipe cut-off reamer, quick draw chuck, running gear, S/N EB20605E01.

### HYDRAULIC SINGLE END PUNCH

STANDARD PIRANHA APPROX. 120 T. CAP. MDL. SEP-120, 21.5" throat depth, 2" stroke, S/N 086.

### HYDRAULIC IRONWORKERS

EDWARDS 55 T. CAP. MDL. JAWS 4, pressbrake station punch, bar flat shear, angle shear, S/N 10755598.

PIRANHA MDL. P50, 6" brake attach., bar shear, coper, angle shear, S/N P510889.

PIRANHA 50 T. CAP., punch end, angle shear, flat shear, coping attach., S/N P3-764.

### VERTICAL TURRET MILLING MACHINE

BRIDGEPORT MDL. 2J, 9" x 42" tbl., variable spds.: 60-4,200 RPM, long. pwr. feed, Newall 2-axis D.R.O., swivel vise, S/N 165697.

### MISCELLANEOUS SHOP & WAREHOUSE EQUIPMENT

MIG GUNS; GAS HOSE; ASSORTED LINCOLN WELDING WIRE SPOOLS; BIG AIRE 48" AIR CIRCULATING FANS; TPI 36" AIR CIRCULATING FAN; AIR MASTER 48" AIR CIRCULATING FAN; (3) CUSTOM 48" AIR CIRCULATING FANS; JOBOX MDL. 1-674990 3-DOOR PORTABLE TOOL STORAGE BOXES; DAYTON TORPEDO KEROSENE HEATERS; DEWALT 14" METAL CUTTING CHOP SAW; (6) SUMNER PRO-ROLL 2,000-LB. CAP. ROLL STANDS w/adj. height and width; (10) SUMNER 2,500-LB. CAP. HELPER STANDS w/folding legs; MATHEY DEARMAN LARGE CAP. CIRCULAR PIPE CUTTERS; SET OF HILLMAN H.D. MACHINERY ROLLERS; MILWAUKEE MAGNETIC BASE DRILL; BAUSCH HAMMER DRILL; (3) 6" RIGHT ANGLE GRINDERS; (3) 4" RIGHT ANGLE GRINDERS.

### FITTINGS

HAMMER UNIONS; WELD NECK FITTINGS; WELD NECK FLANGES; BUTT FLANGES up to 12" dia.; EXTENDED LENGTH HAMMER UNIONS.



PIRANHA HYD. SINGLE END PUNCH



HYD-MECH 16" X 20" MDL. S-23A  
HORIZ. BANDSAW



PIRANHA 50 T. CAP. HYD. IRONWORKER



**DAY  
TWO**

## MACHINES TO BE SOLD BY PHOTO

For Inspection Contact Phil Seely (713) 823-2911

Located  
at

**ORION DRILLING COMPANY  
303 NAVIGATION BLVD.,  
CORPUS CHRISTI, TEXAS 78408**



### CNC 3D PIPE PROFILING MACHINE

**HGG MDL. MPC 450/500**, new 2014, 1.89"-20.08" round pipe cap., 2.36" x 2.36"-17.72" x 17.72" square profile cap., 3 T. pipe trolley, (2) MPC rotators 2.4"-5.5" cap. and 4.7"-13.7" cap., 8 T. main drive w/self-centering 4-jaw chuck, Biaxial cutting head w/additional traversal CNC axis (B-axis), integrated torch rotation w/torch tilting  $\pm 70$  degrees, Kjellberg 450 FineFocus plasma, exhaust and Donaldson Torit DFFro 3 filtration unit, ProCAM, ProGRAM and ProCAD software, S/N 138614. **(SEE VIDEO)**



### CNC PLASMA CUTTING TABLE

**KOIKE ARONSON MASTERGRAPH EXTERME MDL. 3100**, new 2014, Koike pneu. controlled water tbl. 10' x 40', Hypertherm Edge-Pro CNC and Koike drive interface w/operator console, Y-axis drive beam and H-beam package 15M, heavy duty plasma torch station for master carriage, Hypertherm HPR400XD automatic gas plasma system, Koike integrated torch height control, Koike MG-X oxy-fuel torch station, Hi-Lo oxy-fuel gas system, ProNest 2015 plasma package w/3-seat network License by Hypertherm, S/N 49633. **(SEE VIDEO)**



# AUCTION

**WEDNESDAY, APRIL 3  
10:00 A.M.**



**WYSONG 12' X 1/4" MECHANICAL SHEAR**



**TRENNJAEGER PROMACUT LARGE CAP. COLD SAW**



**EDWARDS 55 T.  
HYD. IRONWORKER**



**ASSORTED PIPE FITTINGS**



**TRENNJAEGER MDL. PMC-8 COLD SAW**



**RIDGID 4" PIPE THREADER**





AS NEW AS  
2014

4  
AVAILABLE

LINCOLN VANTAGE PORTABLE DIESEL WELDERS



ASSORTED  
MILLER  
WELDERS



AS NEW AS  
2014

LARGE  
CAPACITY

LINCOLN CV-305 MIG WELDERS

At the Premises of

## APPLIED MACHINERY CORP.

7605 WRIGHT ROAD, HOUSTON, TX 77041

### INSPECTION:

Monday, April 1 &  
Tuesday, April 2,  
9:00 A.M. to  
4:00 P.M.

**On-Site Bidding in Houston & Conroe, Texas  
or Bid Via Webcast at [BidSpotter.com](http://BidSpotter.com)**

### PORTABLE DIESEL WELDERS

(2) **LINCOLN MDL. VANTAGE 400**, as new as 2014, diesel pwr'd., stainless steel construction, 400 amps, digital v. and amp meters, stainless steel shell, S/N U1140902104 – 2,110 H.O.M. (2014), S/N U1140902126 – 2,134 H.O.M.

(2) **LINCOLN MDL. VANTAGE 300**, Kubota diesel engine, stainless steel enclosure, 300 amps, S/N U1071011255 – 7,465 H.O.M. (2007), S/N U1071011251 – 6,452 H.O.M.

### MISCELLANEOUS WELDERS

**MILLER MDL. DELTAWELD 652**, 650 amps @ 44 v., 100% duty cycle, S/N LG460133C.

(2) **MILLER MDL. DIMENSION 652**, 650 amps @ 44 v., 100% duty cycle, S/N KJ267472, S/N KJ182723.

**MILLER MDL. DIMENSION 650**, S/N KD519825.

**MILLER MDL. GOLDSTAR 500SS**, S/N HH068325.

(2) **MILLER MDL. GOLDSTAR 452**, S/N MC01108U, S/N MC013008U.

(3) **LINCOLN MDL. DC400**, as new as 2007, 400 amps @ 36 v., 100% duty cycle, S/N U1980204966 (1998), S/N U1070606154 (2007), S/N U1070808784 (2007).

**MILLER MDL. CP250TS**, 250 amps @ 35 v., 100% duty cycle, Miller Mdl. Coolmate chiller, Cobramatic wire feeder and gun, S/N 72-627334.

**LINCOLN MDL. IDEALARC 250 STICK**, new 2014, 250 amps @ 30 v., 30% duty cycle, S/N U1140608101.

### MIG WELDERS

(3) **LINCOLN MDL. FLEXTEC 450 INVERTER**, as new as 2014, 400 amps @ 36 v., 100% duty cycle, S/N U1110909795 (2011), S/N U11109093819 (2011), S/N U1140501289 (2014).

(2) **LINCOLN MDL. POWERMIG 350 INTEGRATED**, new 2008 and 2006, 350 amps @ 25 v., 100% duty cycle, S/N U1080707269 (2006), S/N U1060505252 (2008).

(2) **LINCOLN MDL. POWERWAVE S350**, new 2014 and 2013, 350 amps @ 31-1/2 v., Mdl. 84 power feed, portable stand, S/N U1140707199 (2014), S/N U1130706806 (2013).

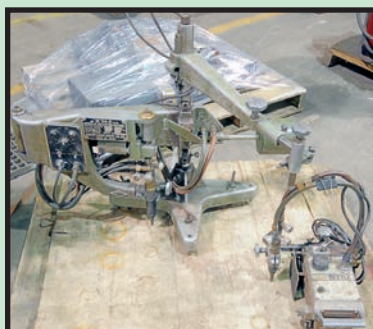
(39) **LINCOLN MDL. CV305 MIG WELDERS**, as new as 2014, 315 amps @ 32 v., 100% duty cycle, Lincoln Mdl. LF72 wire feeder, floor tractor, S/N U1050627250 (2005), S/N U1140907129 (2014), S/N U1060402982 (2006), S/N U1141000021 (2014), S/N U1140907991 (2014), S/N U1141000019 (2014), S/N U1060405322 (2006), S/N U1140907578 (2014), S/N U1131009579 (2013), S/N U1060402963 (2006), S/N U1060501410 (2006), S/N U1140907989 (2014), S/N U1110905249 (2010), S/N U1141000018 (2014), S/N U1110504588 (2011), S/N U1060411469 (2006), S/N U1060403296 (2006), S/N U1050677261 (2005), S/N U1060402983 (2006), S/N U1050905722 (2005), S/N U1060411473 (2006), S/N U1060405297 (2006), S/N U1060405306 (2006), S/N U1130508681 (2013), S/N U1130508582 (2013), S/N U1131009418 (2013), S/N U1140907577 (2014), S/N U1060411467 (2006), S/N U1060411479 (2006), S/N U1140907576 (2014), S/N U1131009578 (2013), S/N U1130506029 (2013), S/N U1060501407 (2006), S/N U1060405305 (2006), S/N U1060403321 (2006), S/N U1060501416 (2006), S/N U1110907501 (2011), S/N U1140907990 (2014) – wire feeder on floor trolley, S/N U1140906197 (2014) – wire feeder on floor dolly.



AS NEW AS  
2014

2  
AVAILABLE

LINCOLN POWER WAVE 350 MIG WELDERS



TRACK TORCH AND PANTOGRAPH  
BURNER



2  
AVAILABLE

JOBBOX PORTABLE WORK STATIONS

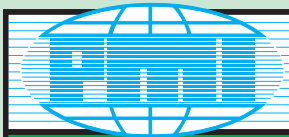




GROVE 20 T. RT622 HYD. ROUGH TERRAIN CRANE



TAYLOR 36,000-LB. CAP. MDL. TE360L FORKLIFT



# AUCTION

**DAY TWO**

**INSPECTION:** Monday, April 1  
& Tuesday, April 2,  
9:00 A.M. to 4:00 P.M.

At the Premises of

**APPLIED MACHINERY CORP.**

7605 WRIGHT ROAD,  
HOUSTON, TEXAS 77041

## WELDING POSITIONER

**PROFAX MDL. WP250**, 250-lb. load cap. vert., 440-lb. load cap. horiz., 13.75" tbl., quick release chuck, mtd. to fabricated steel tbl., S/N WP-1436.

## MISCELLANEOUS WELDING EQUIPMENT

**VICTOR THERMAL DYNAMICS MDL. 102 CUTMASTER PLASMA CUTTER**, on cart.

**KOIKE MDL. IK54V PANTOGRAPH CUTTING TORCH**, 1/4"-4" cap., S/N 506045.

**KOIKE MDL. BEETLE IK-12 TRACK TORCH**, S/N U43515.

**ARONSON APPROX. 5,000-LB. CAP. POWER AND IDLER TURNING ROLL SET**, welded to unitized frame.

## NEW WIRE FEEDERS

**(3) LINCOLN MDL. LF-72**, new in original containers.

## HYDRAULIC ROUGH TERRAIN CRANES

**GROVE 40 T. CAP. MDL. RT740**, diesel, 4-section boom, outriggers, rough terrain tires, S/N 3693.

**GROVE 20 T. CAP. MDL. RT622**, 44,000-lb. cap. @ 12' radius, 32'-80' 3-section boom, boom angle indicator, D.R.H. Johnson block, 23.5-25 rough terrain tires, S/N 44070.

## RECIPROCATING AIR COMPRESSORS

**INDUSTRIAL GOLD MDL. C17521E120H-P**, 7-1/2 HP motor, 120 gal. horiz. tank, S/N 052914-1188.

**INDUSTRIAL GOLD MDL. C1521E120H-P**, 7-1/2 HP motor, 120 gal. horiz. tank, S/N 052914-1187.



TAYLOR 36,000-LB. CAP. MDL. TE360S FORKLIFT

## FORKLIFTS

**TAYLOR 36,000-LB. CAP. MDL. TE360S**, short wheel base, 36,000-lb. cap. @ 36" load center, 11' lift ht., 147" lowered ht., Cummins diesel, powershift transmission, side shift, fork positioners, 96" forks, cab w/heat and A/C, 8611 H.O.M., S/N 27122.

**TAYLOR 36,000-LB. CAP. MDL. TE360L**, 36,000-lb. cap. @ 24" load center, 18' lift ht., 171" lowered ht., Cummins diesel, powershift transmission, 1200 x 20 tires, 96" forks, 13887 H.O.M, S/N 25599.

**HYSTER 30,000-LB. CAP.**, diesel pwrld., 90"W. fork carriage, 84"L. forks, dual front pneu. tires, side shift.

**MITSUBISHI 7,000-LB. CAP. MDL. FD35N**, diesel pwrld., 2-stage mast, 69"L. forks, side shift, rain protection, S/N AF14E80137.

## MATERIAL HANDLING EQUIPMENT

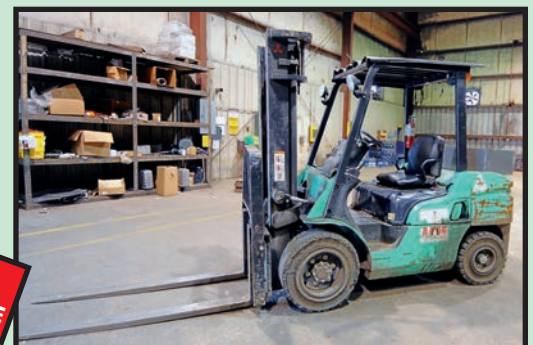
**NYLON CIRCULAR SLINGS; ASSORTED PLATE CLAMPS.**



GROVE 40 T. HYD. ROUGH TERRAIN CRANE



INDUSTRIAL GOLD RECIPROCATING AIR COMPRESSORS



MITSUBISHI DIESEL FORKLIFT

**WEDNESDAY, APRIL 3 AT 10:00 A.M.**

**2 AVAILABLE**





HYD-MECH MDL. H22A AUTO. HORIZ. BANDSAW



ATLANTIC PLATE SHEAR



## DAY THREE

**INSPECTION:** Monday, April 1,  
Tuesday, April 2 & Wednesday, April 3,  
9:00 A.M. to 4:00 P.M.

**THURSDAY,  
APRIL 4  
10:00 A.M.**

At the Premises of

**APPLIED  
MACHINERY CORP.**

**14737 FIRETOWER ROAD,  
CONROE, TEXAS 77306**

**On-Site Bidding in Houston  
& Conroe, Texas or  
Bid Via Webcast at**

**BidSpotter.com**



VIEW OF SCOTTSMAN ICE MACHINES

### AUTOMATIC HORIZONTAL BANDSAW

HYD-MECH MDL. H22A, 20' H.D. infeed roller conveyor, hyd. indexing vise, outfeed tbl., S/N C1010308S.

### FABRICATING MACHINERY

ATLANTIC 10' X 1/4" MDL. HDS-10-1/4 HYDRAULIC SHEAR, front operated manual backgauge, S/N 306112200.

PIRANHA MDL. P90 HYDRAULIC IRONWORKER, flat shear, bar shear, coper, punch and pressbrake attach., S/N P90-877.

### MISCELLANEOUS MACHINES

JET MDL. GHD-20PFT DRILL PRESS, 20" throat, #2 MT spd., geared head, w/adj. height tbl., S/N 1S0401334.

EVERETT 20" ABRASIVE CUT-OFF SAW, pneu. vise, 20 HP motor.

KALAMAZOO 16" ABRASIVE CUT-OFF SAW, approx. 10 HP motor, fabricated steel stand.

RIDGID 4" MDL. 1224 PIPE THREADER, (3) threading heads, 12/36 RPM, pipe cut-off and reaming attach., on fabricated steel stand, S/N EB29486-0806.

### ASSORTED TANKS

(2) WASTE OIL AND ANTIFREEZE CONTAINMENT VESSELS for disposal of used fluids.

### MISCELLANEOUS SHOP & WAREHOUSE EQUIPMENT

HOUGEN HOLLOWMATIC MAGNETIC BASE HOLLOW MILLING DRILLS; HOUGEN HOLLOWMATIC MDL. HMD904 MAGNETIC BASES HOLLOW MILLING DRILL; HOUGEN HOLLOWMATIC MDL. HMD917 MAGNETIC BASES HOLLOW MILLING DRILL; 1/2" AND 3/4" MILWAUKEE MAGNETIC BASE DRILLS; (3) DEWALT METAL CUTTING CHOP SAWS; SALA TOOL BALANCERS; PNEU. IMPACT WRENCHES; PNEU. RIGHT ANGLE GRINDERS; LARGE CAP. COMBINATION WRENCHES; BOLT CUTTERS; PORTABLE BANDSAWS; LARGE QTY. OF DEWALT RIGHT ANGLE GRINDERS; HAMMER WRENCHES; KEEF MDL. K450 DRY ROD OVEN; PHOENIX MDL. 16C DRY ROD OVEN; FIRE EXTINGUISHERS; SOCKETS; NORTON ABRASIVE FLAT WHEEL DISCS new in box; KNOTTED WIRE BRUSHES; KONAN GRINDING STONES; STANLEY BLOWERS; BODY KIT; EXTENSION CORDS; SHOP VACUUM; NORTON 16" ABRASIVE CUT-OFF DISCS; TARPS; LARGE QTY. OF OXY-FUEL HOSE some w/gauges and torches; DIAPHRAGM PUMPS; HAMMER UNIONS; BINDER CLIPS; BLIND FLANGES; BUTTERFLY VALVES; SHELL SHAKER VIBRATOR UNITS; H.D. HELPER STANDS; (26) EMPLOYEE LOCKERS new in boxes on skids, (3) lockers per unit; STEPLADDERS up to 14'; ROLLING PLATFORM LADDERS; LARGE QTY. OF CIRCULATOR FANS by Chicago and Air-Master; PEDESTAL FANS; WASHER AND DRYER SET; (4) ROLLS OF KISWIRE MEASURING WIRE, .092" dia., 20,000' per roll, PARKER HANNIFIN HYDRAULIC OIL FILTRATION SYSTEM on cart.

### ICE MACHINES

(2) SCOTTSMAN PRODIGY MDL. B330P.

SCOTTSMAN PRODIGY MDL. BH1600BB-A.



SAMPLE VIEW OF SHOP AND WAREHOUSE EQUIP.



POWER TOOLS



NEW EMPLOYEE LOCKERS





**PORTABLE WELDING RIGS**



**VIEW OF LINCOLN PORTABLE WELDERS**



**VIEW OF LINCOLN CV-305 MIG WELDERS**



**CHOP SAWS AND MAG-BASE DRILLS**



**TRACK TORCHES AND PANTOGRAPH TORCHES**

## **PORTABLE WELDING RIGS**

**(13) CUSTOM BUILT SKID MOUNTED**, Lincoln Mdl. Classic 300MP diesel welders, heavy tubular steel skids, welding lead racks, helper stand and bottle racks, Lincoln Mdl. LN-25 Pro Suitcase wire feeder, Better Built jobsite tool storage box, S/N C117100863 – 574 H.O.M.; S/N C1180100055 – 423 H.O.M.; S/N C1170900961 – 504 H.O.M.; S/N C1180100057 – 673 H.O.M.; S/N C1180200125 – 257 H.O.M.; S/N C1171000861 – 714 H.O.M.; S/N C1171100970 – 547 H.O.M.; S/N C1171000897 – zero H.O.M. (unused).

**(2) CUSTOM BUILT SKID MOUNTED**, Miller “Big 50” diesel welders, heavy tubular steel skids, welding lead racks, helper stand and bottle racks, S/N KH479403 – 6,755 H.O.M.; S/N KH335236 – 559 H.O.M.

**(2) CUSTOM BUILT SKID MOUNTED**, Miller “Big Blue 502D” diesel welders, heavy tubular steel skids, welding lead racks, helper stand and bottle racks, S/N LC361897 – 4,628 H.O.M.; S/N LC391956 – 2,355 H.O.M.

## **PORTABLE WELDERS**

**MILLER MDL. BIG 50**, diesel pwr., 6,828 H.O.M., S/N KH447228.

**MILLER MDL. BIG BLUE 402D**, gasoline pwr., 9,526 H.O.M., S/N LA240304.

**(2) LINCOLN MDL. RANGER 225**, new 2010, gasoline pwr., S/N U1100404569 – 2,892 H.O.M., S/N U1100305580 – 1,603 H.O.M.

**(3) LINCOLN MDL. RANGER 250GXT**, new 2013, gasoline pwr., S/N U131104403 – 415 H.O.M., S/N N.A. – 2,333 H.O.M., S/N N.A. – 3,760 H.O.M.

## **WELDING MACHINES**

**(35) LINCOLN MDL. CV305**, Lincoln Mdl. LF-72 wire feeder, S/N U1130200827 (2013), S/N U1130110451 (2013), S/N U1130203312 (2013), S/N U1050901551 (2005), S/N U1130109038 (2013), S/N U1130108271 (2013), S/N U1060411477 (2006), S/N U1141003753 (2014), S/N U1141003748 (2014), S/N U1130905734 (2013), S/N U1130109046 (2013), S/N U114110028 (2014), S/N U1130109045 (2013), S/N U1130206001 (2013), S/N U1130203315 (2013), S/N U1050806571 (2005), S/N U1060405289 (2006), S/N U110504597 (2011), S/N U1130106448 (2013), S/N U1141003752 (2014), S/N U1055100898 (2005), S/N U1060501406 (2006), S/N U1050901556 (2005), S/N U1130203314 (2013), S/N U1130203313 (2013), S/N U1130909856 (2013), S/N U1060501408 (2006), S/N U1130109031 (2013), S/N U1130204100 (2013), S/N U1130111287 (2013), S/N U1050806573 (2005), S/N U1130109049 (2013), S/N U110504590 (2011), S/N U1130909859 (2013), S/N U110504596 (2011).

## **MISCELLANEOUS WELDING EQUIPMENT**

**(2) LINCOLN MDL. LN-25 PRO-SUITCASE WIRE FEEDERS**; **AS-SORTED WELDING WIRE** by Pinnacle Alloy, Familiarc, Oxford and others; **PROFAX AIR-ARC GOUGING TORCHES** new in boxes; **(5) KOIKE BEETLE MDL. IK-12 TRACH TORCHES** w/assorted track; **PORTA-POWER HYDRAULIC POWER SUPPLY**; **WELD FITTINGS** of all sizes up to 6"; **LARGE QTY. OF MIG GUNS**; **KOIKE SANSO MDL. IK-54D PANTOGRAPH CUTTING MACHINE**, 1/4"–4" cap., adj. base.

At the Premises of

**APPLIED  
MACHINERY  
CORP.**

**14737 FIRETOWER RD.,  
CONROE,  
TEXAS 77306**



**ROD OVENS**





# AUCTION

**DAY  
THREE**

**THURSDAY, APRIL 4  
10:00 A.M.**



**1,000-HP DC DRILLING MOTORS**

## DRILLING RIG

**PARCO/OIME MDL. SL-7** Consisting of: Parco substructure 637,500-lb. setback, 487,500-lb. rotary setback mast, OIME SL7 drawworks, EB anchor, ready for Cat 4 inspection, top doghouse, poor boy MGS, partial choke manifold, Koomey closing unit, 750 KVA transformer, trip tank, water tank, diesel tank, (2) Oilwell A1700 mud pumps w/traction motors, Grasshopper, (2) K5C2-X air hoists.

## DRILLING RIG MAST

**DSI 142' H. 685,000-LB.**, 6-sheave crown w/fast line.



**(1 OF 2)  
OILWELL  
MUD PUMPS**



**AIR  
COMPRESSOR  
SKID**



**PARCO/OIME DRILLING RIG SUBSTRUCTURE**



**DSI 685,000-LB. MAST**



## HOOKS & SWIVELS

**(2) AMERICAN 400 T. CAP. HOOKS;** B.J. DYNAFLEX 500 T. CAP. MDL. 5500 HOOK; **(2) NATIONAL MDL. P400 SWIVELS;** CONTINENTAL EMSCO MDL. LB650 SWIVEL; WKM SWIVEL, S/N 45002.

## HYDROSTATIC TEST SYSTEM

**AIR-OVER-HYDRAULIC HYDROSTATIC PUMP SYSTEM,** 10,000 PSI, gauging, (2) pumps, chart recorder, assorted hose and valves, skid mtd.

**DON'T MISS  
THIS SALE!**



**INSPECTION:** Monday, April 1,  
Tuesday, April 2 & Wednesday, April 3,  
9:00 A.M. to 4:00 P.M.





200 HP

2006

GARDNER DENVER ROTARY SCREW COMPRESSOR



JLG BOOM LIFT

**DAY THREE**  
**THURSDAY, APRIL 4**  
**10:00 A.M.**

### ROTARY SCREW AIR COMPRESSOR

**GARDNER DENVER ELECTRA-SAVER MDL. EBU99C**, new 2006, 200 HP motor, 125 PSI, 460 v., air cooled, Production Order No. 1366440.

### PORTABLE AIR COMPRESSORS

**INGERSOLL RAND MDL. 825**, new 2003, 825 CFM, diesel pwr., mtd. to tandem axle trailer, 5,946 H.O.M., S/N N.A.

**INGERSOLL RAND MDL. HP750WCU**, new 2003, 750 CFM, 6,799 H.O.M., S/N 337116UDN764.

**(2) SULLIVAN PALATEK MDL. D375PDX1DA**, John Deere diesel engine, 150 PSI, 2,400 RPM, 375 CFM, single axle trailer mtd., S/N 71962 – 3,001 H.O.M., S/N 71960 – 1,480 H.O.M.

**INGERSOLL RAND MDL. XP375WIR**, new 2008, John Deere diesel engine, 375 CFM, 6,545 H.O.M., S/N 391903UIRC99.

**INGERSOLL RAND MDL. 185WIR**, new 2004, 185 CFM, single axle trailer, 5,009 H.O.M., S/N 341285UKN820.

### TELESCOPING BOOM LIFTS

**JLG MDL. 40H**, new 2000, diesel pwr., 500-lb. platform cap., 40' platform ht., 36 x 96 platform, 33' max. reach, S/N 16275-0300048920.

**GENIE MDL. S60**, new 2000, gasoline pwr., 4-wheel drive, 500-lb. workload, 60' platform ht., 51'-3" platform reach, 7,490 H.O.M., S/N S60-6163.

**JLG MDL. 600S**, gasoline pwr., S/N 0300035619.

### WATER TRUCK

**2000 MACK MDL. CX613**, approx. 20,000 gal. water tank, hose and fittings, ODO: 343,000 miles, VIN 1N1AE07Y2YW005274.

### FUEL & LUBE TRUCK

**WESTERN STAR**, approx. 5,000 gal. diesel fuel tank, air compressor, (7) lubrication system tanks, assorted reels for lube, ODO: 36,000 miles, VIN 5KJJALAY85PU42457.



WESTERN STAR LUBE-FUEL TRUCK



JLG MDL. 600S BOOM LIFT



INGERSOLL RAND PORTABLE DIESEL COMPRESSOR



SULLIVAN PALATEK PORTABLE DIESEL COMPRESSOR

2 AVAILABLE





**FORD F-650 MECHANICS TRUCK**



**CASE ROUGH TERRAIN FORKLIFT**



### **SERVICE TRUCK**

**2001 FORD MDL. F-650 CREW CAB**, 6-spd. manual transmission, on-board reciprocating air compressor, Autocrane truck bed, extendable boom, hyd. driven crane unit, Miller Bobcat Mdl. 225 gasoline welder, assorted toolboxes, ODO: 295,000 miles, VIN 3FDNX65Y01MA74869.

### **HYDRAULIC ROUGH TERRAIN CRANE**

**GROVE**, 2-section boom, swing-away jib.

### **ROUGH TERRAIN FORKLIFT**

**CASE MDL. 586G**, 5,000-lb. cap. @ 15' lift, 3,000-lb. cap. @ 22' lift, Superior Fabrication Mdl. 6WMVR mast, 60" forklift carriage, 48" forks, 19.5L-24 rough terrain tires, 4-wheel drive, side shift, S/N JJG0294434.

### **ARTICULATED FRONT END LOADER**

**JOHN DEERE MDL. 644G**, fork attach., 110"W. fork carriage, 90"L. forks, 23.5XR25 rough terrain tires, 3,888 H.O.M., S/N DW644GD561277.

### **GOLF CART**

**YAMAHA**, 6-passenger, electric pwrd.

### **MATERIAL HANDLING EQUIPMENT**

**MANY LEVER HOISTS** up to 5 T. cap. by Ingersoll Rand, CM, Dayton, Jet and others; **LIFTING CLEVISSES; ROLLER CHAIN; LOAD BINDING STRAPS.**

At the Premises of  
**APPLIED  
MACHINERY CORP.**  
**14737 FIRETOWER ROAD,  
CONROE, TEXAS 77306**



**YAMAHA ELECTRIC GOLF CART**



**JOHN DEERE ARTICULATED FORKLIFT**



**GROVE HYD. ROUGH TERRAIN CRANE**



# PLANT & MACHINERY INC.

AUCTIONEERS • APPRAISERS • LIQUIDATORS • REAL ESTATE

P.O. Box 218568  
Houston, TX 77218-8568

**DATED MATERIAL – PLEASE DELIVER**



**PUBLIC  
INVITED**

**DAY ONE: TUES., APRIL 2 • 10:00 A.M.**

**DAY TWO: WED., APRIL 3 • 10:00 A.M.**

**DAY THREE: THURS., APRIL 4 • 10:00 A.M.**

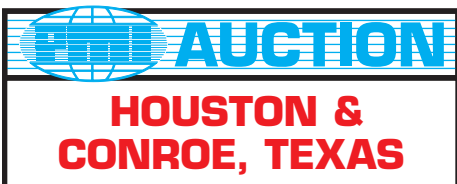


**ATTENTION: PLANT MANAGER  
OR EQUIPMENT BUYER**

Presorted  
First Class Mail  
U.S. Postage  
PAID  
Eugene, Oregon  
Permit No. 17

**3 DAYS –  
3 LOCATIONS –  
HOUSTON & CONROE,  
TEXAS**

**HUGE QTY. OF MACHINE TOOLS; FABRICATING  
EQUIP.; DRILLING RIG & OILFIELD EQUIP.;  
LARGE CAP. MATERIAL HANDLING EQUIP.;  
ROLLING STOCK; PLANT SUPPORT EQUIP.;  
PARTS INVENTORY; MUCH MORE!**



## LODGING NEAR DAY 1 & DAY 2

**HOMEWOOD SUITES**..... (832) 237-2000  
13110 Wortham Center Drive, Houston, Texas 77065

**LA QUINTA INN**..... (281) 469-4018  
13290 FM 1960 Road West, Houston, Texas 77065

**HYATT PLACE HOUSTON NORTHWEST/CY-FAIR**.....  
..... (281) 955-5070  
19813 Northwest Freeway, Houston, Texas 77065

## DAY 3 LODGING

**SPRINGHILL SUITES BY MARRIOTT** ..... (936) 271-0051  
16520 I-45 South, The Woodlands, Texas 77384

**FAIRFIELD INN & SUITES**.....(936) 271-0110  
16850 I-45 South, The Woodlands, Texas 77384

## UNABLE TO ATTEND?

Bid on-line in real time at  
**TO PARTICIPATE YOU MUST:** **BidSpotter.com**

**1. Register at [www.BidSpotter.com](http://www.BidSpotter.com). Use the link to BidSpotter on PMI's website calendar. DO IT NOW.**

**2. Either send wire transfer, or, overnight delivery service a cashier's check deposit in the amount of \$3,000 (U.S. Bidders) or \$10,000 (Foreign Bidders) to:**

**Plant & Machinery Inc.  
1304 Langham Creek Drive, Suite 454, Houston, TX 77084**

**Wire transfer instructions can be found at [pmi-auction.com](http://pmi-auction.com)  
You must be registered and have your deposit in the hands of Plant & Machinery, Inc. at least 24 hours prior to the start of the auction.**

**Failure to register and/or failure to send your deposit to Plant & Machinery, Inc. may disqualify you from bidding. DON'T WAIT.**

**If you need assistance, don't hesitate to call (713) 691-4401.**

**ALL WEBCAST BIDS ARE SUBJECT TO AN 18% BUYER'S PREMIUM.**

## FINANCE YOUR AUCTION PURCHASE

Conserve Your Cash & Increase  
Your Bidding Power

**AuctionLeaSe Provides  
M&E Financing**

**With Approvals  
from \$5,000  
to \$999,000**

**(800) 438-1470**

**Apply Online:  
[www.AuctionLease.com](http://www.AuctionLease.com)**

## PARTIAL TERMS & CONDITIONS

A 15% Buyer's Premium Will Apply On-site. An 18% Buyer's Premium Will Apply to Webcast Bids. See Above Rules for Participation.

Everything will be sold to the highest bidder or bidders for cash in accordance with the auctioneer's Customary Terms of Sale, copies of which will be posted on the premises.

**ALL PAYMENTS MUST BE MADE BY CASH, CASHIER'S CHECK, WIRE TRANSFER OR COMPANY CHECK WITH BANK LETTER GUARANTEEING PAYMENT TO PLANT & MACHINERY INC.**

Here is an example of what your letter should be: *Mr. "Customer Name" is a customer of this bank. This bank will guarantee unqualified payment to PMI on the account listed herein up to the amount of \$\_\_\_\_\_. This letter is good until May 6, 2019.*

In default of payment of bills in full within the time therein specified, the Auctioneer in addition to all other remedies allowed by law, may retain all monies received as deposit or otherwise, as liquidated damages. All items must be removed by the time announced at the start of the sale.

Lots not paid for and/or removed within the time allowed may be resold at public or private sale without further notice, and any deficiency, together with all expenses and charge of resale, will be charged to the defaulting purchaser.

The buyer acknowledges that he or an agent has inspected all of the assets upon which he will be bidding and/or does purchase.

Buyer agrees to accept assets purchased "AS IS," WITH "ALL FAULTS" AND "WITH REMOVAL AT BUYER'S RISK AND EXPENSE." THE AUCTIONEER EXPRESSLY DISCLAIMS ON THE PART OF THE AUCTIONEER AS AGENT AND THE SELLER, ANY WARRANTY AS TO FITNESS OR

**USABILITY OF ALL THE ASSETS, AND THE BUYER EXPRESSLY WAIVES ANY CLAIM IN RESPECT TO ANY POSSIBLE FUTURE USE OF ANY ASSET PURCHASED FOR ANY PURPOSE WHATSOEVER.**

The buyer does hereby assume and does agree to indemnify and hold the auctioneer harmless from any future claim which shall pertain to the fitness or use of that asset as being purchased. Riggers, movers, electricians and buyers performing work at the Auction Site must provide PMI with evidence of insurance. The insurance coverage must be at a level acceptable to PMI and to the seller. PMI reserves the right to withdraw items, alter the order of the sale, accept bids from the seller, and group lots as it may deem appropriate. This auction may include consignment items.

Although all information has been obtained from sources deemed reliable, the auctioneer and seller make no warranty or guarantee, expressed or implied, as to the accuracy of the information herein contained, or contained in our catalog. It is for this reason that buyers should avail themselves of the opportunity to make inspection prior to the auction. Although it is not likely, auction sales are subject to cancellation or postponement. Kindly contact auctioneer prior to attendance.

These terms and conditions may be modified or supplemented by language in the catalog available at the sale site or by announcement at the start of the sale. Bidders should be attentive to those announcements and to the catalog language.