



# COMBINATION AUCTION AND SEALED BID SALE

## HISTORIC SHIPYARD SALE! SEALED BID OFFERING OF UNUSED OGDEN PANEL WELDING LINE AND LIVE/WEBCAST AUCTION

Featuring: A Large Capacity Machine Shop Facility, Heavy Plate Processing Equipment, Panel Welding Line, Sheet Metal Shop,  
Large Quantity of Plant Support Items, High Quality/Heavy Capacity Overhead Bridge Cranes, and Much, Much More!

Theater Style Auction at the Premises of  
**AVONDALE MARINE, LLC**  
5100 RIVER ROAD  
WESTWEGO, LOUISIANA 70094

**SALE DATE:**  
**THURSDAY, DECEMBER 12**  
**SEALED BID: 9:00 A.M.**  
**AUCTION: 10:00 A.M.**

**AUCTION  
BUYER'S  
PREMIUM:**  
**15% ON-SITE**  
**18% WEBCAST**

**On-Site Bidding in Westwego, Louisiana or  
Bid Via Webcast at [BidSpotter.com](http://BidSpotter.com)**

**INSPECTION:** Tuesday, December 10 &  
Wednesday, December 11, 9:00 A.M. to 4:00 P.M.  
**Safety Shoes, Safety Glasses and  
Hard Hats Required to Inspect**



PANEL LINE PLATE HANDLER



**CNC**

**2004**

TACCHI 58" X 354" HEAVY DUTY CNC LATHE



CINCINNATI 2,000 T. X 40' HYDRAULIC PRESS BRAKE



**48  
AVAILABLE**

SHIPYARD HYDRAULIC JACK SYSTEM

*Read Partial Terms and Conditions on Back Page of Brochure*

Sale  
Conducted  
By: **PLANT & MACHINERY INC.**  
AUCTIONEERS • APPRAISERS • LIQUIDATORS • REAL ESTATE  
1304 Langham Creek Drive, Suite 454, Houston, Texas 77084  
**PHONE: (713) 691-4401      FAX: (713) 672-7905**  
E-MAIL: [pmi@pmi-auction.com](mailto:pmi@pmi-auction.com) • WEBSITE: [www.pmi-auction.com](http://www.pmi-auction.com)  
Ron Moore, LA Lic. #851 • PMI LA Lic. #AB-396  
**HOUSTON • DALLAS • ST. LOUIS**

In Conjunction With:



7918 East McClain Drive,  
Suite 101  
Scottsdale, AZ 85260  
Phone: (480) 455-3910

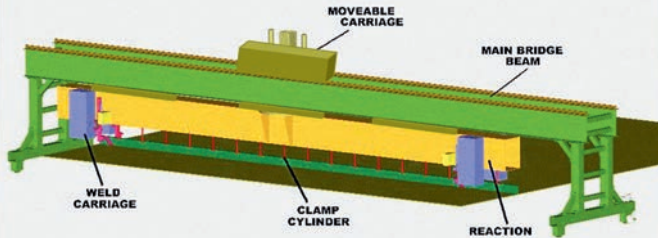
[www.kdauctions.com](http://www.kdauctions.com)



# SEALED BID SALE

## OGDEN SHIPYARD PANEL WELDING LINE, NEW 2008, NEVER INSTALLED

Avondale Panel Line -  
Stiffener Fillet Weld Gantry



**SEE OUR WEB SITE AT  
WWW.PMI-AUCTION.COM  
FOR DETAILED SPECIFICATIONS,  
DRAWINGS AND MANUALS**

56'W. x 56'L. max. panel size, 1.5" max. panel thickness, 200-ton weight cap., radio control operation panels, Incl. plate edge mill, panel transport system, several service gantries, insert weld stations, plate turnover, grind/cut/mark gantry, stiffener fitting and seam welding gantries, web welding and fitting gantry. (10% buyer's premium will apply).



PANEL WELDING COMPONENTS



PANEL WELDING COMPONENTS

**SEALED BIDS WILL BE OPENED ON  
THURSDAY, DECEMBER 12 AT 9:00 A.M.  
PRIOR TO THE START OF THE SHIPYARD AUCTION**

**To request the required sealed bid form  
that must be used when submitting bids, call PMI  
at (713) 691-4401 or email marthaj@pmi-auction.com.**





# LIVE/WEBCAST AUCTION

**WESTWEGO,  
LOUISIANA**

**THURSDAY, DECEMBER 12  
10:00 A.M.**

**INSPECTION:** Tuesday, December 10  
& Wednesday, December 11,  
9:00 A.M. to 4:00 P.M.

**Safety Shoes, Safety Glasses and  
Hard Hats Required to Inspect**



**CNC**

**2004**

**TACCHI 58" X 354" HEAVY DUTY CNC LATHE**

## CNC LATHES

**TACCHI 58" X 354" MDL. HD/3-90HCNC**, new 2004, type 675X9000, Fanuc 21i-T CNC control, 51" swing over apron, 26.57" sw. over crossslide, spds.: 2-720 RPM in (3) gear ranges, 60 HP, (2) open style adj. steady rests, pwr. tailstock body and quill, sliding telescoping way covers, 4-pos. H.D. turning turret, large selection of interchangeable turret toolholders, S/N 6993.

**MORI SEIKI MDL. TLB52000**, Fanuc 6T CNC control, 20.4" swing, 11" turn dia., 3.5" spdl. bore, 2,000 RPM, 25 HP, 12" hyd. chuck, 10-pos. turret, steady rest, S/N 893.

**MAZAK MDL. M5-2000**, Fagor CNC control, 24" swing, 13" turn dia., 4.15" spdl. bore, 2,200 RPM, 30 HP, front and rear turrets, Forkardt 18" surface mount air chuck, S/N 50177.

## CNC TUBE SHEET DRILLING MACHINE

**VERSADRILL MDL. HD-7272**, new 2002, 72" X-axis travel, 72" Y-axis travel, 20,000-lb. tbl. cap., 12-pos. tool changer, CAT-50 taper, 20 HP spdl. drive motor, S/N 333.

## CNC TABLE TYPE HORIZONTAL BORING MILLS

**5" LUCAS MDL. 542B-144**, Fanuc 0M CNC control, 60" x 146" tbl., 144" X, 96" Y, 84" Z-axis travels, 30" boring spdl. travel, 5" boring spdl. dia., #50 NST spdl. w/PDB, 10-1,220 RPM, S/N 42B4311.

**5" LUCAS MDL. 542B-120**, G.E. Fanuc 0M CNC control, 60" x 146" tbl., 144" X, 120" Y, 93" Z-axis travels, 30" boring spdl. travel, 5" boring spdl. dia., #50 NST spdl. w/PDB, 10-1,220 RPM, S/N 42B4205.

## BORING MILL ACCESSORIES

**(2) LUCAS 60" SQ. AIRLIFT ROTARY TBL.**, S/N 48BP133 and S/N 4WGB0102 w/T-slotted slide base and pwr. rotation; **30" SQ. MANUAL ROTARY TBL.** w/T-slotted base; **CAST IRON ANGLE PLATE**, H.D., 96"W. x 72"H., through slots, threaded holes and stud locators; **(ONE PAIR) 24"W. X 120"L. FABRICATED ANGLE PLATES.**

## 4-AXIS VERTICAL MACHINING CENTER

**CINCINNATI MILACRON ARROW 1250**, Acramatic A2100 CNC control, 30" x 60" tbl., 50" X, 30" Y, 30" Z-axis travels, CAT-40, 5,000 RPM, 15 HP, 21 ATC, 4th axis tbl. and tailstock, S/N 055A00-98-0021.

**DON'T MISS  
THIS SALE!**



**CNC**

**LUCAS MDL. 542B-144, 5" CNC  
HORIZONTAL BORING MILL**



**CNC**

**VERSADRILL CNC TUBE SHEET DRILL**



**CNC**

**MAZAK M5-2000 CNC LATHE**



**CNC**

**CINCINNATI MILACRON ARROW 1250  
VERTICAL MACHINING CENTER**



**CNC**

**MORI SEIKI TL5B2000 CNC LATHE**

**On-Site Bidding in  
Westwego, Louisiana or Bid Via  
Webcast at [BidSpotter.com](http://BidSpotter.com)**

**AUCTION BUYER'S PREMIUM:  
15% ON-SITE • 18% WEBCAST**



## ENGINE LATHES

**PITTSBURGH 64" X 40"**, approx. 42" over crossslide, 48" bed width, spds.: 13–156 RPM, quick change thdng. gear box, 59" geared faceplate w/(4) top jaws, rapid traverse to carriage, (2) taper attachment brackets, 60 HP main drive motor.

**LEBLOND 60" X 38" MDL. 4025-36 HEAVY DUTY**, approx. 48" sw. over crossslide, 3 -pt. steady rest, (3) open style roller steady rests, D.R.O., pwr. rapid traverse, taper attach., (2) 4-way tool posts, S/N 3NK852.

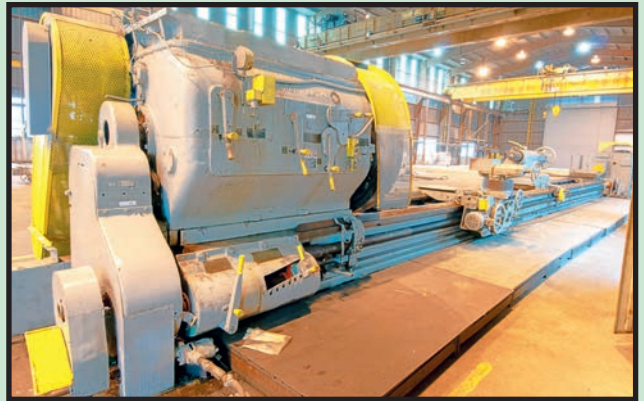
**AXELSON 48" X 50"**, approx. 36" sw. over crossslide, taper attach., pwr. rapid traverse, spds.: 6–750 RPM, 2-1/4" spdl. hole, assorted open roller steady rests, hyd. operated weld peening attach., S/N N.A.

**DEAN SMITH & GRACE 24" X 110"**, 15" sw. over crossslide, spds.: 16–1,250 RPM, 3-1/2" spdl. hole, inch/metric thdng., taper attach., steady rest, 4-way rapid traverse, 21" dia. 4-jaw chuck, S/N 41588-10-81.

**CLAUSING METOSA 20" X 120" MDL. C20124SS**, 12" sw. over crossslide, 3-1/8" spdl. hole, inch/metric thdng., spds.: 30–1,500 RPM, taper attach., 21" dia. 4-jaw chuck, S/N 38027.

**COLCHESTER MASCOT 17" X 80" MDL. 1600**, 3.15" spdl. hole, spds.: 20–1,600 RPM, inch/metric thdng., S/N 7/0012/06259.

**STANDARD MODERN 16" X 60" MDL. 1660**, approx. 10" sw. over crossslide, 2-1/8" spdl. hole, spds.: 40–2,000 RPM, 12" dia. 3-jaw manual chuck, S/N 11206.



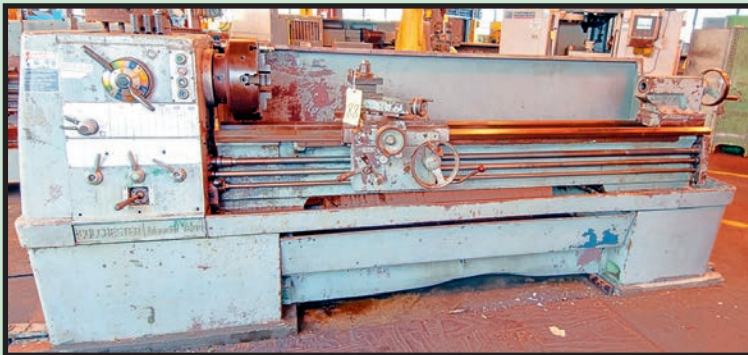
PITTSBURGH 64" X 40' HEAVY DUTY ENGINE LATHE



AXELSON 48" X 50' HEAVY DUTY ENGINE LATHE



LEBLOND 60" X 38' HEAVY DUTY ENGINE LATHE



COLCHESTER 17" X 80" ENGINE LATHE



STANDARD  
MODERN  
16" X 60"  
ENGINE  
LATHE

DEAN SMITH  
& GRACE  
24" X 110"  
ENGINE LATHE

## VERTICAL TURRET LATHES

**KING 72"**, 72" plain tbl. w/(4) top jaws, L.H. swivel ram, R-8 swivel turret, side head, S/N 1713.

**BULLARD 50" SPIRAL DRIVE**, plain tbl. w/(4) top jaws, side head, S/N 15232.

**BULLARD 34" SPIRAL DRIVE**, 34" dia. 4-jaw built-in chuck, side head, 5-pos. turret, S/N 19645.

## RADIAL ARM DRILLS

**AMERICAN 6' X 17"**, H.D. 60" rd. slotted tbl., spds.: 20–1,600 RPM, S/N 50704.

**AMERICAN HOLE WIZARD 5' X 15"**, double ended base, tilting box tbl., spds.: 20–1,600 RPM, S/N 64374.

## MISCELLANEOUS GRINDERS

**GRAND RAPIDS NO. 6 TOOL AND CUTTER GRINDER**, w/as-sorted accessories.

**GRAND RAPIDS MDL. DWA39 DRILL GRINDER**, S/N 8213.

**HAMMOND CARBIDE GRINDER**, S/N N.A.

**HAMMOND 10" ABRASIVE BELT GRINDER**, cast iron base, S/N N.A.

**ASSORTED PEDESTAL GRINDERS.**







**KING 72" VERTICAL TURRET LATHE**



**BULLARD 50" SPIRAL DRIVE  
VERTICAL TURRET LATHE**



**AMERICAN 5' X 15" RADIAL ARM DRILL**

## MISCELLANEOUS MACHINERY

**LIBERTY SPLIT TABLE DESIGN DOUBLE HOUSING PLANER**, 36'L. x 72"W. tbl., approx. 72" max. ht. under rail.

**CLEVELAND OPEN SIDE PLANER**, 54' x 20' tbl., 83" max. width, 64"H. under rail, rail head, side head, No. 50 taper geared milling head, S/N 1226.

**D.C. MORRISON KEYSEATER**, tilting tbl., hold-down, S/N K844181.

**MOREY VERTICAL SLOTTER**, 12" stroke, 24" dia. built-in rotary tbl., S/N M-267-VS-12.

**BRIDGEPORT SERIES II VERTICAL TURRET MILL**, 11' x 58" tbl., pwr. quill feed, chrome ways, 4 HP motor, front operating handle, spds.: 50–3,500 RPM, S/N 3659.

**ZERO BLAST & PEEN MDL. BNP220-1 BLAST CABINET**, glove box design, 24" rotary tbl., shot blast tower and integrated dust collector, light, S/N 31183.

**GALCO INDUSTRIAL ELECTRONICS APPROX. 5,000-LB. CAP. DYNAMIC BALANCER**, variable freq. drive motor, roller stands, hold-downs.

**BUFFALO 18" PEDESTAL DRILL PRESS** w/adj. ht. tbl.; **CLEEREMAN 18" GEARED HEAD DRILL** w/adj. ht. rd. tbl.; **CINCINNATI 32" H.D. MECHANICAL SHAPER**, plain tbl., S/N N.A.

## MACHINE SHOP ACCESSORIES

**ELECTRO ARC MDL. 2S PORTABLE TAP BURNING UNIT**, 15 KVA, perm. magnetic base, spare mini-mag perm. magnetic base, (2) burning heads, assorted accessories, S/N 14217.

**DEXTER VALVE RESEATING TOOL** w/interchangeable heads and large qty. of abrasive discs.

**TROYKE 24" ROTARY TBL.**; **TROYKE 18" ROTARY TBL.**; **TROYKE 10" HORIZONTAL/VERTICAL ROTARY TBL.**; **ROTAB 36" TILTING ROTARY TBL.**; **PLAIN AND TILTING BOX TBLS.**; **2-AXIS POSITIONING TBLS.**; **(22) 70"W. X 80"L. X 14"D. UNITIZED BURNING TBLS.**; **(13) 11'-6"L. X 6'W. BURNING TBLS.**; **ERICKSON 14" INDEXING HEAD**; **(2) L&W 18" INDEXING HEADS**; **H.D. V-BLOCKS**; **H.D. CAST IRON V-RESTS**; **ROLLER LATHE RESTS**; **TAPER SHANK DRILLS**; **SIDE MILLING CUTTERS**; **NO. 50 NST TOOLHOLDERS**; **SHELL MILLS**; **QUALIFIED LATHE TOOLS**; **TAPS**; **ENDMILLS**; **THREADING DIES**; **SUNNEN HONING TOOLS**; **FASTENERS**; **ALORIS QUICK CHANGE TOOLPOST AND HOLDERS**; **JACOBS RUBBERFLEX COLLET CHUCK**; **HARDINGE MDL. 22J COLLET CHUCK**.



**GALCO ROTATIONAL BALANCER**



**VIEW OF BORING MILL ACCESSORIES**



**BRIDGEPORT SERIES II  
VERTICAL MILLING MACHINE**



**ELECTRO ARC  
PORTABLE  
TAP BURNER**

**MORRISON  
KEYSEATER**



**DEXTER VALVE RESEATING TOOL**





LAKE ERIE 5,000 T. FORGING PRESS

40'  
OVERALL



2,000 T.

CINCINNATI 2,000 T. X 40' HYDRAULIC PRESS BRAKE

## HYDRAULIC FORGING PRESS

**LAKE ERIE 5,000 T. CAP.**, 78" R-L x 64" F-B dist. btwn. posts, approx. 48" stroke, 60" daylight, S/N 1818.

## HYDRAULIC PRESSBRAKES

**CINCINNATI 2,000 T. CAP. X 40' MDL. H-2000**, 40' overall length of bed and ram, 30'-6" dist. btwn. housings, 15" stroke, 24" throat, 60 HP, large build-up die, rear jib crane handler, Merlin light curtain safety device, electric foot pedal control, S/N 36934.

**PACIFIC 500 T. CAP. X 22' MDL. FK500-22/20**, new 2004, 400 T. punching cap., 3/8" x 19'-6" L. bending cap., 22' overall, 20'-5" dist. btwn. housings, Pacific digital press control, Merlin light curtain safety device, control pulpit, (2) foot switches, large cap. built-up die, S/N A1718.

**STEELWELD 500 T. CAP. X 20' MDL. LH-1414**, 20' overall length, 14'-10" dist. btwn. housings, 20' x 3/16" bending cap., 13" stroke, 14" throat, Merlin light curtain safety device, foot pedal control, full length build-up die, S/N M-7820.

**PACIFIC 500 T. CAP. X 16' MDL. 500-16**, 16' overall length, 10'-4" dist. btwn. housings, 8" throat, Merlin light curtain safety device, H.D. 4-way die, electric foot pedal control, S/N 1374.

**ACCURPRESS 400 T. CAP. X 14' MDL. 740014**, new 1991, 14' ttl. length, 12'-6" dist. btwn. housings, Merlin light curtain safety device, H.D. 4-way die, assorted pressbrake punches and dies, S/N 1745.

**ADIRA 135 T. CAP. X 10' MDL. QHD-13530**, new 1994, 10' overall length of bed and ram, 8'-4" dist. btwn. housings, Hurco Autobend 7 single axis CNC backgauge, Merlin light curtain safety device, European style tooling, 4-way die, S/N 3765/7317.



2004

PACIFIC 500 T. X 20' HYDRAULIC PRESS BRAKE



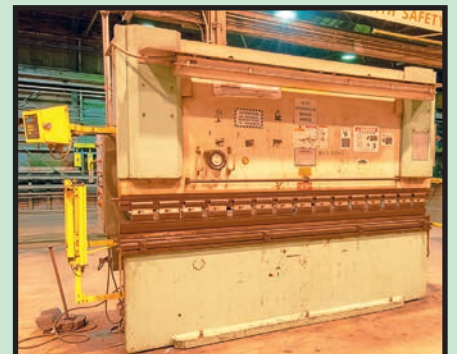
STEELWELD 500 T. X 20' HYDRAULIC PRESS BRAKE



PACIFIC 500 T. X 16' HYDRAULIC PRESS BRAKE



ACCURPRESS 400 T. CAP. X 14' HYDRAULIC PRESS BRAKE



ADIRA 135 T. CAP. X 10' CNC HYDRAULIC PRESS BRAKE





**MG INDUSTRIES 28' X 504' CNC PLASMA  
SHAPE CUTTING MACHINE**

**DON'T MISS THIS SALE!**



**KOIKE CNC PLASMA SHAPE CUTTING MACHINE**

**DOALL 36'  
VERTICAL  
BANDSAW**



# **AUCTION** **THURSDAY, DECEMBER 12 • 10:00 A.M.**

Theater Style Auction at the Premises of  
**AVONDALE MARINE, LLC**  
**5100 RIVER ROAD**  
**WESTWEGO, LOUISIANA 70094**

**INSPECTION:** Tuesday, December 10 &  
 Wednesday, December 11, 9:00 A.M. to 4:00 P.M.  
**Safety Shoes, Safety Glasses and Hard Hats Required to Inspect**

**On-Site Bidding in Westwego, Louisiana**  
**or Bid Via Webcast at [BidSpotter.com](http://BidSpotter.com)**

## CNC PLASMA SHAPE CUTTING MACHINES

**(4) MG INDUSTRIES MDL. TMC6028**, Allen Bradley Series 9 CNC control, 30'W. x 504' burning tbl., 28' cutting width, (3) independent traveling bridges each w/(2) independent carriages w/5-axis plasma head and oxy. fuel head on motorized torch holder, Hypertherm water chiller system, (4) Hypertherm HT4100 plasma pwr. supplies. 4th bridge has (2) oxy. fuel bevel heads on independent carriages and Burny 5 CNC control, S/N TMC6028LP-96-3233, S/N TMC6028LP-96-3234, S/N TMC6028LP-98-3516, S/N TMC45281-96-396 (Note: this unit will be sold as a system).

**MG INDUSTRIES 26'W X 120' L.**, 26' burning width, 120' burning length, Burny 5 CNC control, plasma burning heads.

**LINDE MDL. CM350 12'W X 60"L.**, Burny 3 CNC control, 12'W. x approx. 60' ttl. cutting length, oxy. fuel cutting head, plasma cutting head w/Hypertherm Max200 pwr. supply.

**MG INDUSTRIES 8'W. x 8'L.**, MG Systems CNC control, Hypertherm Hi-Definition plasma pwr. supply w/gas controls, downdraft cutting tbl., S/N A117713.

**KOIKE 6' X 20' MDL. PM2020**, new 10/2000, Interlogic Mdl. SR-100I plasma pwr. supply, downdraft cutting tbl., S/N PM75901.

## CNC OXY. FUEL BURNING MACHINES

**AIRCO ELECTRIC EYE STYLE**, Burny 3 CNC control, 12' burning width, (6) oxy. fuel heads w/motorized torch adj., pattern tbl., Linatrol HL-8 optical head, dry burning tbl..

**MG INDUSTRIES**, Burny 5 CNC control, 15' burning width, approx. 70' burning length, (2) carriages w/oxy. fuel bevel heads.

**(3) CRO ENGINEERING**, 15' burning width, bevel heads, manual controls.

## SEMI-AUTOMATIC HORIZONTAL BANDSAW

**BEHRINGER**, 1-1/2" blade, variable spds.: 62-426 FPM, H.D. roller conveyor, single column design.

## VERTICAL BANDSAWS

**MARVEL MDL. 2125A-PC60 TILT FRAME**, 30' infeed/outfeed H.D. roller conveyors, programmable auto. feed, S/N E2125-20326PC.

**DOALL 36' MDL. 3613-1**, blade welder and grinder, S/N 149-65383.

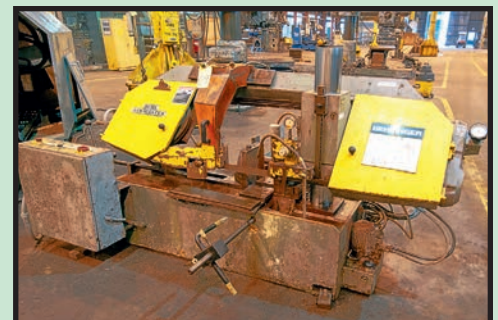
**DOALL 16' MDL. 1612-0**, miter device, blade welder and grinder, S/N 209-661188.



**MG INDUSTRIES CNC PLASMA  
SHAPE CUTTING MACHINE**



**MARVEL 2125A-PC60 CNC TILT-FRAME  
VERTICAL BANDSAW**



**BEHRINGER HORIZONTAL BANDSAW**





**BALDWIN SOUTHWARK 40' PYRAMID PLATE BENDING ROLL**

## PLATE BENDING ROLLS

**BALDWIN SOUTHWARK PYRAMID TYPE**, 42' overall length, 36" dia. top roll, 23" dia. lower rolls, 140 HP, hyd. drop end.

**BALDWIN SOUTHWARK PYRAMID TYPE**, 32' overall length, 24" top roll, 18" lower rolls, 60 HP, hyd. drop end.

**BERTSCH #34 20' X 2-1/2" INITIAL PINCH TYPE**, 36" dia. top roll, 34" dia. pinch rolls, grooved lower roll, cast steel gears and frame, 200 HP, S/N M-8510, (\*Note: this machine is currently in need of repair).

**KLING PYRAMID TYPE**, 16' overall length, 18" top roll, 12" lower rolls, 40 HP, hyd. drop end, S/N 3495.

## MECHANICAL PRESSBRAKES

**CHICAGO 50 T. X 10'**, 8'-6" dist. btwn. housings, manual backgauge, S/N N.A.

**DIACRO 72" X 14 GA. MDL. 14-72**, foot pedal control, S/N 6600278362.

## HYDRAULIC PLATE SHEARS

**CINCINNATI 8'-1" MDL. 8SE08**, new 2004, programmable backgauge on pulpit, Cincinnati shear control center, foot pedal control, S/N 52843.

**CINCINNATI 8'-3/4" MDL. 6G08**, R.H. squaring arm, front operated pwr. backgauge, S/N 38890.

## MECHANICAL POWER SHEARS

**CINCINNATI 20' X 1/8" MDL. 4320**, 18" throat, front operated pwr. backgauge w/indicator, S/N 33273.

**CINCINNATI 14' X 14 GA.**, rear mtd. manual backgauge.

**CINCINNATI 10' X 1/4"**, H.D. ball roller front tbl., 18" gap., manual backgauge, S/N N.A.

**WYSONG 10' X 10 GA. MDL. 1010-RD**, front operated pwr. backgauge w/indicator, 10' L.H. squaring arm, S/N 32-957.

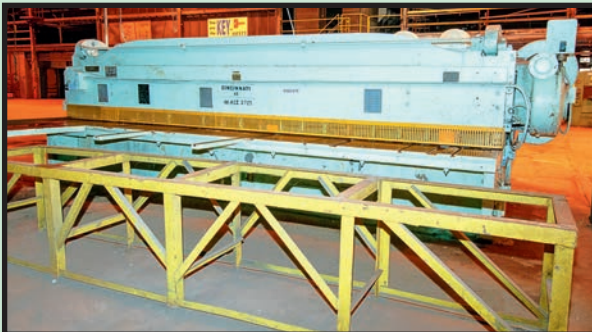
2004



**CINCINNATI 8' X 1" HYDRAULIC PLATE SHEAR**



**CINCINNATI 8' X 3/4" HYDRAULIC PLATE SHEAR**



**CINCINNATI 20' X 1/8" MECHANICAL SHEAR**



**KLING 16' PYRAMID PLATE BENDING ROLL**



**WYSONG 10' X 10 GA. MECHANICAL SHEAR**



**BALDWIN SOUTHWARK 32' PYRAMID PLATE BENDING ROLL**

**DON'T MISS THIS SALE!**





**PANEL LINE PLATE HANDLER**



**PANEL LINE BUTT WELDER**



**ESAB HEBE WELDING BRIDGE**

## SHIPYARD PANEL WELDING LINE

(To Be Offered as a Single Line and Individual Components)

**Item No. 1 – IMG 22 T. X APPROX. 66' SPAN GANTRY CRANE**, new 1998, single leg, 30'L. electromagnetic bar, pendant control, 15'-8"H. under bridge, S/N 23476.

**Item No. 2 – IMG BUTT WELDING BRIDGE**, new 1998, (2) sub-arc butt welding stations, 71'-6" bridge width, Lincoln Mdl. AC1200 welding pwr. supplies, (2) twin wire sub-arc welding heads, 1/4" to 1" thickness cap., flux hoppers, assorted controls, Product No. K3154.10/1.

**Item No. 3 – ESAB HEBE BUTT WELDING BRIDGE**, (2) twin wire sub-arc welding heads, Lincoln Mdl. AC1200 welding pwr. supplies, 71'-6" bridge width, Lincoln Mdl. NA-4 sub-arc welding controls and control pendant, 1/4" – 1" thickness cap.

**Item No. 4 – IMG 2.7 T. CAP. STIFFENER FITTING BRIDGE**, single leg gantry design, approx. 67' width, hyd. bridge activation.

**Item No. 5 – ESAB HEBE PANEL LINE FILLET WELD STATION**, stationary bridge design, (8) Lincoln Idealarc DC1000 welding pwr. supplies, total bridge width is approx. 112', magnetic stiffener handlers, Lincoln attack weld heads, performs 3/16" or 1/4" fillet welds on stiffeners, magnetic hold-down bars, (8) Lincoln sub-arc welding heads w/NA5 weld controllers.

**Item No. 6 – HUGE ASSORTMENT OF MATERIAL CONVEYING EQUIPMENT**, Incl. fixed and swivel casters, linear motion drivers, turning wheels, etc.



**PANEL CONVEYOR SYSTEM**



**IMG STIFFENER BRIDGE**



**ESAB HEBE FILLET WELDING BRIDGE**

## INITIAL PINCH BENDING ROLLS



**NIAGARA 6' X 3/16"**  
**INITIAL PINCH BENDING ROLL**



**LARGE CAPACITY PRESS BRAKE DIES**



**HENDLEY BELOIT 4' X 3/16"**  
**INITIAL PINCH BENDING ROLL**





**WHEELABRATOR STRUCTURAL  
BLAST & PAINT SYSTEM**



**WHEELABRATOR STRUCTURAL  
BLAST & PAINT SYSTEM**



**WHEELABRATOR SANDBLAST  
SHOT TOWERS**

## PLATE & STRUCTURAL BLAST & PAINT FACILITIES

**PLATE STEEL SYSTEM**, consisting of: approximate opening size 12' x 40', 40' infeed conveyor, Wheelabrator 5-wheel belt driven shot blast w/20 HP drive motors and 22" wheels, pre-blast dry oven, Binks Mfg. automated airless spray booth w/travelling paint head manipulators, 40'L. conveyORIZED gas fired bake oven, central control stations, auto. shot feeders, wide array of replacement parts for this system.

**STRUCTURAL STEEL SYSTEM**, consisting of: approximate opening size 36"H. x 4'W., 40' infeed conveyor, Wheelabrator 5-wheel belt driven shot blast w/20 HP drive motors and 22" wheels, pre-blast dry oven, Binks Mfg. automated airless spray booth w/travelling paint head manipulators, 40'L. conveyORIZED gas fired bake oven, central control stations, auto. shot feeders, wide array of replacement parts for this system.

## STRUCTURAL BLAST MACHINE

**WHEELABRATOR**, approx. 12"H. x 24"L. I-beam cap., upper and lower 20 HP belt driven blast wheels, Torit dust collector, 40' pwr. infeed and outfeed conveyors, recirculating shot system, 2,768 H.O.M.

## SHOTBLAST TOWER SYSTEMS

(2) **WHEELABRATOR MDL. A4-1458**, new 2006, 30 HP drive, (2) large cap. Schmidt shot towers, recirculating shot system w/ bucket elevator and controls, approx. 10 T. cap. sand hopper, 1,038 H.O.M., S/N 3213, S/N 3214.

## MISCELLANEOUS WELDING EQUIPMENT

**PLASMA ROLLER BED PLATE CUT-OFF TABLE**, 72" material width, 20' overall length, pwr. roller conveyor w/Heath pwr. plasma torch holder, Thermal Dynamics Pak150 plasma pwr. supply; **MILLER MDL. NT456 CC/CV MIG WELDER**, 450 amps @ 80 v., 100% duty cycle, S/N LC580655; **MILLER MDL. SYNCROWAVE 300 TIG WELDER**, S/N N.A.; (6) **MALCOLM GILLILAND 600 AMP WELDERS**; **LINCOLN MDL. LT7 SUB-ARC WELDING TRACTOR**, Lincoln Mdl. NA-3N welding controls, flux equipment; (2) **MOTIVE 4"W. BELT SANDERS**; **ACORN 5' X 5' WELDING TABLE** on fabricated stand.

## ACORN WELDING TABLES

(80) **ACORN 5' X 5' WELDING PLATENS** on common base (\*Note: to be sold individually), w/assorted tooling.

## DUST COLLECTORS

(10) **TORIT MDL. DFT4-48 DOWNFLOW CARTRIDGE STYLE**, 3-compartment design, (48) cartridges per collector, 50 HP drive draft fan, 2,158 H.O.M., S/N's IG376142-003, S/N IG721297-001, S/N IG721297-00148-cell, S/N IG536154-001.

(8) **TORIT MDL. DFT3-24**, new 1999, (24) cartridges, single shell design, 40 HP draft fan.

(2) **TORIT AIR PULSE JET**, Norther Blower 10 HP draft fan.

**TORIT DUST  
COLLECTORS**



**20  
AVAILABLE**

**5' X 5'  
ACORN  
WELDING  
PLATENS**



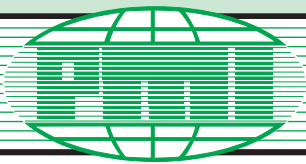
**80  
AVAILABLE**

**WHEELABRATOR  
STRUCTURAL  
BLAST SYSTEM**



**DON'T MISS THIS SALE!**





# AUCTION

**THURSDAY, DECEMBER 12  
10:00 A.M.**

At the Premises of  
**AVONDALE MARINE, LLC**  
5100 RIVER ROAD  
WESTWEGO, LOUISIANA 70094

**INSPECTION:** Tuesday, December 10 &  
Wednesday, December 11, 9:00 A.M. to 4:00 P.M.  
**Safety Shoes, Safety Glasses and Hard Hats Required to Inspect**



ENGEL  
"SLEAR" COIL  
PROCESSING LINE

LOCKFORMER  
& FLAGLER  
ROLL FORMERS



LOCKFORMER & FLAGLER ROLL FORMERS



CHICAGO CORNER NOTCHER

## MISCELLANEOUS SHEET METAL MACHINES

ENGEL MDL. 5-16 SLEAR COIL PROCESSING LINE, 60" material width, 4" dia. slitter arbors, full width shear, (4) side notching units, 6-coil drum payoff system, (3) add'l. coil thimbles, pwr'd. belt payoff tbl. and stacker, S/N 300087.

CHICAGO MDL. HN-10 CORNER NOTCHER, 10 ga. max. cap., foot pedal control, S/N 328003-1.

PEXTO 18 GA. TRIPLEX COMBINATION MACHINE, 12" throat depth on either side, beading rolls in center, air clamping.

TORQUE LIFT 20,000-LB. CAP. MDL. 1-2-20 ELEVATING COIL CAR, runway & pwr. traverse, for loading coil line thimbles.

CHICAGO DRIES & KRUMP 6' X 12 GA. MDL. BPO612-6 BOX AND PAN BRAKE, assorted fingers, S/N 324375-M; AIRCO PORTABLE SPOT WELDER, foot pedal control; 6" H.D. BELT SANDER; 3,600 RPM FLAT WHEEL AND WIRE BRUSH GRINDER; 1-1/2" BELT SANDER; (2) 6" BELT SANDERS; ASSORTED PEDESTAL GRINDERS & BENCH DRILLS; 4,500-LB. CAP. SCISSOR LIFT TBL. w/pwr. traverse and pendant control; (2) WHITNEY JENSEN MDL. 129 SINGLE END PUNCHES, fabricated stand, S/N 1045-6-66, S/N N.A.



SOLEM 24" WOOD PLANER

## ROLLFORMING EQUIPMENT

LOCKFORMER 22 GA. CLEAT FORMER, S/N 7150; FLAGLER 16 GA. H.D. S & DRIVE MACHINE, S/N 16846; FLAGLER 18 GA. H.D. S AND DRIVE MACHINE, S/N 18445; PITTSBURGH LOCKFORMER 16 GA. ROLLFORMER, S/N 8305; PITTSBURGH LOCKFORMER 16 GA. ROLLFORMER, S/N N.A.

## INITIAL PINCH BENDING ROLLS

NIAGARA 6' X 3/16" MDL. 6X72, foot pedal control, S/N 55737.

HENLEY-BELOIT 4' X 3/16" MDL. 3C, S/N 16652.

NIAGARA 4' X APPROX. 20 GA. MDL. 342, S/N 52596.

## WOODWORKING MACHINERY

JET 14" X 38" MDL. JW1438 LATHE, variable spds.: 700-3,000 RPM, S/N 92306; SOLEM MACHINE CO. 24" MDL. PB PLANER, heavy cast iron design; DAYTON 15" MDL. 4TJ93A PLANER; DEWALT 16", RADIAL ARM SAW H.D. roller tbl. feed on either side; DELTA MDL. RT40 TBL. SAW, extended tbl. top, rip fence, S/N N.A.; (2) POWERMATIC TBL. SAWS; BOSCH MDL. RA1170 SPINDLE SHAPER, fabricated base; JET 8" MDL. JJ8 JOINTER, S/N 6030; 12" DISC SANDER; DELTA 16" WOODCUTTING VERTICAL BANDSAW; (2) COMBINATION BELT/DISC SANDERS; CLAUSSING 15" VARIABLE SPEED DRILL PRESS; POWERMATIC 15" VARIABLE SPEED DRILL PRESS.



DELTA TABLE SAW

**DON'T MISS  
THIS SALE!**

**INTRA-PLANT  
TRANSPORTATION  
DURING INSPECTION  
WILL BE PROVIDED  
VIA PASSENGER VANS**





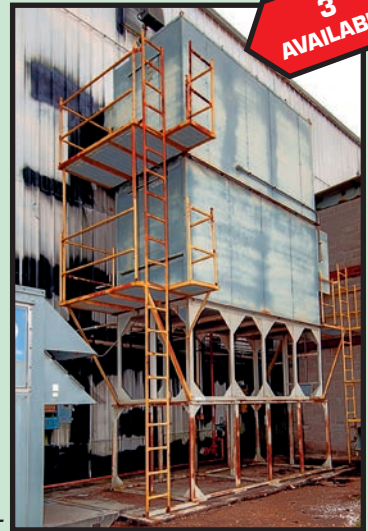
**6  
AVAILABLE**

**CONCEPTS & DESIGNS  
DEHUMIDIFIER UNITS**

**12,000  
CFM**



**CONCEPTS & DESIGNS  
DEHUMIDIFIER UNITS**



**3  
AVAILABLE**

**GAS FIRED HEATER UNIT**

## DEHUMIDIFIER UNITS

**(6) CONCEPTS & DESIGNS INC.**, new 2006, 12,000 CFM, 15 HP blower, skid mtd.

**CONCEPTS & DESIGNS INC. MDL. CDH-R38-5.0-ES0SSLOF**, 1,387 CFM, S/N 007098-003-001.

**CONCEPTS & DESIGNS INC. MDL. CDH-R-168/160-12-ES-0SSLOF**, 3,382 CFM, S/N 007198-002-003.

## UNITIZED HEATER SYSTEMS

**(3) INDUSTRIAL COMMERCIAL EQUIPMENT CO.**, gas fired, blower unit, heater box.

## AIR CONDITIONING/HEATING UNITS

**(6) TRANE MDL. TEH600A4DU0A4NA1A00000H0K0000R**, 198 deg. max. outlet air temp., S/N C06002939 (1986), S/N C05F05155, S/N C05F05154, S/N C05F05157, S/N N.A., S/N C05F05156.

## AXIAL FANS

**(8) LAU INDUSTRIAL AIR MDL. 012-03609822-1680R**, 25 HP motor, 1,695 RPM fan, w/exhaust ducting for shotblast dust evacuation.



**TRANE COMBINED HEATER/COOLER UNITS**



**TRANE COMBINED HEATER/COOLER UNITS**

**2  
AVAILABLE**

**LOW  
HOURS**



**INGERSOLL RAND 300 HP  
ROTARY SCREW AIR COMPRESSORS**



**THURSDAY, DECEMBER 12 • 10:00 A.M.**

**INSPECTION:** Tuesday, December 10 &  
Wednesday, December 11, 9:00 A.M. to 4:00 P.M.  
**Safety Shoes, Safety Glasses and Hard Hats Required to Inspect**

## AIR COMPRESSOR SYSTEMS

**INGERSOLL RAND CENTRIFUGAL CENTAC TYPE 4C-110M4**, G.E. Mdl. 5K84111594501 2,500 HP drive motor, 1,785 RPM, 4,000 v. main input, 11,200 CFM, S/N B3052.

**(2) INGERSOLL RAND MDL. SSREPE300 ROTARY SCREW**, 300 HP motor, 1,363 CFM, S/N F1949U05279 (601 H.O.M., new 2005), S/N E1948U05239 (5,070 H.O.M.).

**INGERSOLL RAND REFRIGERATED AIR DRYER.**

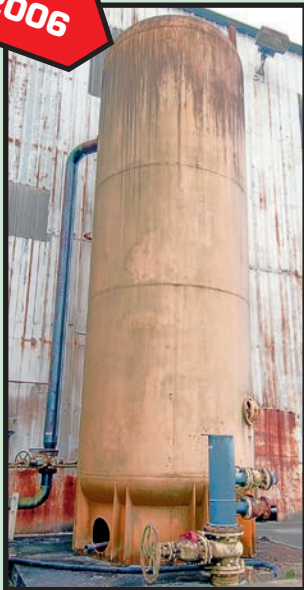
**INGERSOLL RAND COOLING TOWER**, heat exchanger, (2) circulation pumps, valves.

## AIR RECEIVING TANKS

**(2) SILVAN INDUSTRIES**, new 2006, approx. 72" dia. x 30' ht., 137 PSI.



2006



SILVAN AIR RECEIVER TANK



COOLING TOWER FOR CENTAC COMPRESSOR



2,500  
HP

INGERSOLL RAND 2,500 HP CENTAC  
CENTRIFUGAL AIR COMPRESSOR

## RAIL MOUNTED TENTS

(2) BIG TOP STRUCTURES, 69'W. x 62' ht. at  
center x approx. 60'L., fireproof fabric cover.



DON'T MISS THIS SALE!

## NEW POWER DISTRIBUTION STATIONS

(21 Units) ESL POWER SYSTEMS (purchased new, never installed), outdoor service, 800 amp main  
breaker, 400 amp aux. breaker, 12-gang, Nema 4X, 800 amp 440/480 v. 50/60 Hz, (4) 32 amp plug  
stations, (6) 100 amp plug stations.



21  
AVAILABLE

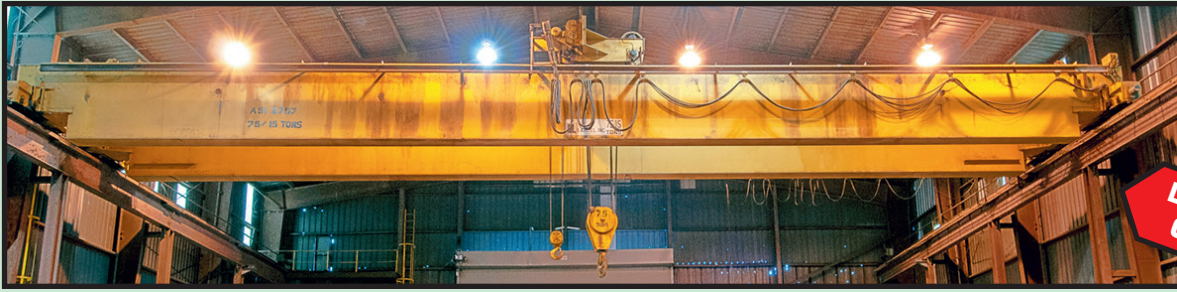
## HYDRAULIC SHIPYARD JACKING SYSTEM

CONSISTING OF: (48) Custom Built shipyard jacks, double cylinder design, approx. 75 T. cap. per jack, approx. 56" stroke, unitized hyd. system w/20 HP hyd.  
drive motors, 40 gal. reservoir, 3,000 PSI operation, may be used on a local or central basis (\*Note: to be offered by the piece).



48  
AVAILABLE





**LANDELL 75/15 T.  
OVERHEAD  
BRIDGE CRANE**

**SHAWBOX 50/7.5 T.  
OVERHEAD  
BRIDGE CRANE**



## OVERHEAD BRIDGE CRANES

**LANDEL 75/15 T. X 85' SPAN**, Class D, 30' ht. under hook, top running, double girder, center drive, 75 T. main hoist, 15 T. cap. aux. hoist, pendant control, S/N A130.

**SHAWBOX 50 T. X 85' SPAN**, Class D, 30' ht. under hook, top running, double girder, center drive, 50 T. main hoist, 7-1/2 T. aux. hoist, pendant control.

**KRANCO 25 T. X 135' SPAN**, 36' ht. under hook, (2) 12-1/2 T. hoist and trollies, cab controlled.

**(2) KRANCO 25 T. X 135' SPAN**, 36' ht. under hook, 25 T. hoist and trolley, cab controlled.

**SHAWBOX 20 T. X 85' SPAN**, 30' ht. under hook, 20 T. main hoist, 7-1/2 T. aux. hoist, pendant control.

**20 T. X APPROX. 61' SPAN**, approx. 18' under rail, (2) Shawbox 10 T. underhung hoists, pwr. trollies, pendant control.

**KRANCO 10 T. X APPROX. 42' SPAN**, 23' ht. under rail, top running, pendant control.

**(4) 10 T. X APPROX. 65' SPAN**, top running, (2) Yale 5 T. underhung hoists, pendant control.

**ROBBINS & MEYERS 7-1/2 T. X APPROX. 26' SPAN**, top running, double girder, 18' under hook, pendant control.

**LOADLIFTER 7-1/2 T. X 55' SPAN**, AC, top running, double girder, pendant control.

**LOADLIFTER 5 T. X APPROX. 59' SPAN**, top running, double girder, pendant control.

**LOADLIFTER 5 T. X APPROX. 29' SPAN**, top running, single girder, underhung hoist, pendant control.

**LOADLIFTER 5 T. X 29' SPAN**, top running, single girder, underhung hoist, pendant control.

**AVONDALE MARINE WAYS 5 T. X 55' SPAN**, top running, double girder.

**UNKNOWN MFG. 5 T. X 42' SPAN**, top running, underhung hoist.

**(2) SHAWBOX 5 T. X 26' SPAN**, top running, single girder, underhung hoist, pendant control.

**UNKNOWN MFG. APPROX. 64' SPAN**, 25' under hook, top running, single girder, underhung hoist, pendant control.

**2 T. X 24' SPAN**, 14' ht. under rail, single leg gantry, 2 T. cap. chain hoist.

**2 T. X APPROX. 44' SPAN**, underhung, single girder, 26' under hook, pendant control.

## SINGLE LEG GANTRY CRANES

**25 T. X APPROX. 60' SPAN**, approx. 30' ht. under hook, 25 T. main, 5 T. aux.

**(5) KRANCO 10 T. X 53' SPAN**, 28' ht. under hook, single leg, pendant control, S/N 3679 A, B, C, D.

**5 T. X APPROX. 50' SPAN**, pendant control.



**KRANCO 10 T. SINGLE LEG GANTRY CRANE**



**5 T. SINGLE LEG GANTRY CRANE**



**10 T. DOUBLE LEG GANTRY CRANE**





(2) 30 T. DOUBLE LEG GANTRY CRANES

## DOUBLE LEG GANTRY CRANES

(2) 30 T. X 63' SPAN, double leg, approx. 20' ht. under hook, (2) Shawbox 15 T. underhung hoists, operator controls on gantry leg.

(2) 30 T. X APPROX. 55' SPAN, double leg, approx. 40' ht. under hook, powered, (2) 15 T. cap. hoists (\*Note: does not include rail-road rail).

CUSTOM 10 T. X 61' SPAN, double leg, self-propelled, approx. 25' ht. under hook, (2) 5 T. underhung hoists.

25 T. X 63' SPAN, double leg, approx. 30' ht. under rail, currently missing hoist and trolley.

## MAGNETIC PLATE HANDLING CRANES

KONE 15 T. X APPROX. 128' SPAN, 30'L. 15 T. electromagnetic plate handler, cab controlled.

VIA NOVA 17-1/2 T. X 128' SPAN MDL. 909, 30'L. magnet bar w/pwr. rotation, cab controlled, S/N 1763/67.

## FREE STANDING PEDESTAL JIB CRANES

1 T. X 20' REACH, 10' ht. under rail, Budgit 1 T. chain hoist.

1 T. X 18' REACH, 12' ht. under rail.

(4) 1 T. X 15' REACH, 11' ht. under rail, electric chain hoist.

1 T. X 19' REACH, 16' ht. under rail, Yale 1 T. electric chain hoist.



KONE MAGNETIC PLATE HANDLING CRANE



VIA NOVA MAGNETIC PLATE CRANE

## COLUMN MOUNTED JIB CRANES

(12) LOAD LIFTER 1 T. X 19' REACH, Budgit electric chain hoists.

## CANTILEVER STORAGE RACKS

48" ARMS, approx. 20' ht., single sided, (5) arms average per column – (38) columns total; (37 SECTIONS) 48" ARMS, approx. 16' ht., double sided; (40 SECTIONS) 48" ARMS, approx. 16' ht., single sided; (20 SECTIONS) 60" ARMS, approx. 16' ht., double sided, 1,000-lb. cap. per arm; (17 SECTIONS) 60" ARMS, approx. 16' ht., single sided, 1,000-lb. cap. per arm.

## PALLET RACKING

(APPROX. 1,240 SECTIONS) 42" DP. X 20' HT. UPRIGHTS, (5) levels high, 106' linear beams – to be sold in rows.

## WINCHES

(2) INGERSOLL RAND MDL. HU40 AIR WINCHES, S/N V2581, S/N N.A.

INGERSOLL RAND MDL. HU AIR WINCH, 5,000-lb. rating, S/N 91902.

(2) THERN MDL. 4HWF8M-S12 ELECTRIC WINCHES, 6,100-lb. first layer rating, 4,600-lb. full drum rating, S/N 4006-31443, S/N 4006-31442.

(3) INGERSOLL RAND AIR TUGGERS, S/N RCB77859, S/N 91802, S/N 92002.



DOUBLE-SIDE CANTILEVER RACK



(1000'S) OF 42" PALLET RACK SECTIONS



THERN WIRE ROPE WINCH

100'S  
AVAILABLE





## PLATE HANDLING ROLLOCATOR CARS

**VIANOVA 12'W. X 50'L.**, 17.5 T. cap., electric pwr., S/N 4388.00.

**VIANOVA 12'W. X 50'L.**, operator's pulpit, rail mtd. (\*Note: rails not included).

## ORDER PICKER FORKLIFTS

**(2) YALE 4,000-LB. CAP. MDL. NTA040SA**, 49" traverse, 180 deg. turret, 42" non-extension forks, 286.6" max. lift, 72 v., charger, S/N A869T01537B, S/N A869T01536B.

**CROWN 4,000-LB. CAP. MDL. TS**, 4,000-lb. @ 24" L.C., 231" lift ht., 291" max. lift, charger, S/N 1A233490.

**HYSTER 3,000-LB. CAP. MDL. R30C**, 202" max. lift ht., 24 v., S/N B118U136B.

**YALE 3,000-LB. CAP. MDL. OS030EAN24TV105**, 165" max. lift ht., 24 v., S/N N536789.

**YALE 3,000-LB. CAP. MDL. OS038AN24ST106**, 241" max. lift ht., 24 v.

## FORKLIFTS

**EAGLE PITCHER 8,000-LB. CAP. MDL. R80 ROUGH TERRAIN**, diesel pwr., 102" max. lift ht., S/N 49A03462 (\*Note: out of service).

**CATERPILLAR 8,000-LB. CAP. MDL. R80 ROUGH TERRAIN**, diesel pwr., 192" max. lift ht., S/N 49A03051 (\*Note: out of service).

**CATERPILLAR 6,000-LB. CAP. MDL. RC60**, diesel pwr., 168" max. lift ht., S/N 31A1352.

**(2) TOYOTA 4,000-LB. CAP. MDL. FDA20 ELECTRIC** (\*Note: out of service).



**YALE 4,000-LB. ELECTRIC  
NARROW AISLE FORKLIFT**



**CROWN 4,000-LB. ELECTRIC  
NARROW AISLE FORKLIFT**

## STAND-UP REACH TRUCK

**YALE 4,500-LB. CAP. MDL. NRD45BBNL36SE154**, 4,500-lb. cap. @ 24" L.C., 283" max. lift ht., 358" ttl. lift ht., 36 v., w/charger.

## PICKUP TRUCKS

**2002 FORD MDL. F-250 KING CAB**, auto. trans., pwr. stroke diesel V-8 engine, VIN 1FDNX20FX3EA93800 (\*Note: out of service).

**2004 FORD MDL. F-150**, Triton V-8 engine, VIN 1FTRF12W14NC15120 (\*Note: out of service).

## MATERIAL HANDLING EQUIPMENT

**ANVER 1,650-LB. CAP. VACUUM LIFTER**, (8) suction cups, approx. 10' ttl. length; **ANVER 1,650-LB. CAP. VACUUM LIFTER**, (8) suction cups, 20' max. load length, 8' max. load width; **VACULIFT 380-LB. CAP. VACUUM LIFTER**, (4) vacuum cups, S/N A204-1-500VB1; **CUSTOM 8' SHEET LIFTER**, approx. 5,000-lb. cap., adj. width; **C-FRAME 10 T. CAP. C-FRAME COIL LIFTER**; **COIL STORAGE RACK**, 9,500-lb. per unit, 6-coil cap.; **7 T. CAP. X 48"L. SPREADER BAR**; **ENERPAC UNITIZED HYDRAULIC SYSTEM**, (4) Powerteam 100 T. jack units; **(3) 2 T. CAP. COLUMN MOUNTED JIBS**.

**ENERPAC/POWERTEAM  
HYDRAULIC JACK SET**



**DON'T  
MISS  
THIS  
SALE!**

**SHEET  
LIFTER**







# COMBINATION AUCTION AND SEALED BID SALE

## HISTORIC SHIPYARD SALE! SEALED BID OFFERING OF UNUSED OGDEN PANEL WELDING LINE AND LIVE/WEBCAST AUCTION

Featuring: A Large Capacity Machine Shop Facility, Heavy Plate Processing Equipment, Panel Welding Line, Sheet Metal Shop,  
Large Quantity of Plant Support Items, High Quality/Heavy Capacity Overhead Bridge Cranes, and Much, Much More!

**SALE DATE:**  
**THURSDAY, DECEMBER 12**  
**SEALED BID: 9:00 A.M.**  
**AUCTION: 10:00 A.M.**

Theater Style Auction at the Premises of  
**AVONDALE MARINE, LLC**  
**5100 RIVER ROAD, WESTWEGO, LOUISIANA 70094**

### INSPECTION:

Tuesday, December 10 & Wednesday, December 11, 9:00 A.M. to 4:00 P.M.  
**Safety Shoes, Safety Glasses and Hard Hats Required to Inspect**

**INTRA-PLANT TRANSPORTATION DURING INSPECTION  
WILL BE PROVIDED VIA PASSENGER VANS**

**SAFETY SHOES, SAFETY  
GLASSES AND HARD HATS  
REQUIRED TO INSPECT**

### PLANT & MACHINERY INC. APPRAISAL DIVISION

Confidential Industrial Machinery & Equipment  
Appraisals

Call **1-800-282-8466**

### FINANCE YOUR AUCTION PURCHASE

Conserve Your Cash & Increase Your  
Bidding Power

**AuctionLea\$e Provides M&E Financing  
With Approvals from \$5,000 to \$999,000  
(800) 438-1470**

**Apply Online:** [www.AuctionLease.com](http://www.AuctionLease.com)

### PARTIAL TERMS & CONDITIONS - SEE BID PACKET FOR SEALED BID TERMS & CONDITIONS

#### Safety Shoes, Safety Glasses and Hard Hats Required to Inspect.

A 15% Buyer's Premium Will Apply On-site.

An 18% Buyer's Premium Will Apply to Webcast Bids. See Above Rules for Participation.

Everything will be sold to the highest bidder or bidders for cash in accordance with the auctioneer's Customary Terms of Sale, copies of which will be posted on the premises.

**ALL PAYMENTS MUST BE MADE BY CASH, CASHIER'S CHECK, WIRE TRANSFER OR COMPANY CHECK WITH BANK LETTER GUARANTEEING PAYMENT TO PLANT & MACHINERY INC.**

Here is an example of what your letter should be: *Mr. "Customer Name" is a customer of this bank. This bank will guarantee unqualified payment to PMI on the account listed herein up to the amount of \$\_\_\_\_\_. This letter is good until January 31, 2020.*

In default of payment of bills in full within the time therein specified, the Auctioneer in addition to all other remedies allowed by law, may retain all monies received as deposit or otherwise, as liquidated damages. All items must be removed by the time announced at the start of the sale.

Lots not paid for and/or removed within the time allowed may be resold at public or private sale without further notice, and any deficiency, together with all expenses and charge of resale, will be charged to the defaulting purchaser.

The buyer acknowledges that he or an agent has inspected all of the assets upon which he will be bidding and/or does purchase.

Buyer agrees to accept assets purchased "AS IS," WITH "ALL FAULTS" AND "WITH REMOVAL AT BUYER'S RISK AND EXPENSE." THE AUCTIONEER EXPRESSLY DISCLAIMS ON THE PART OF THE AUCTIONEER AS AGENT AND THE SELLER, ANY WARRANTY AS TO FITNESS OR USABILITY OF ALL THE ASSETS, AND THE BUYER EXPRESSLY WAIVES ANY CLAIM IN RESPECT TO ANY POSSIBLE FUTURE USE OF ANY ASSET PURCHASED FOR ANY PURPOSE WHATSOEVER.

The buyer does hereby assume and does agree to indemnify and hold the auctioneer harmless from any future claim which shall pertain to the fitness or use of that asset as being purchased. Riggers, movers, electricians and buyers performing work at the Auction Site must provide PMI with evidence of insurance. The insurance coverage must be at a level acceptable to PMI and to the seller. PMI reserves the right to withdraw items, alter the order of the sale, accept bids from the seller, and group lots as it may deem appropriate. This auction may include consignment items.

Although all information has been obtained from sources deemed reliable, the auctioneer and seller make no warranty or guarantee, expressed or implied, as to the accuracy of the information herein contained, or contained in our catalog. It is for this reason that buyers should avail themselves of the opportunity to make inspection prior to the auction. Although it is not likely, auction sales are subject to cancellation or postponement. Kindly contact auctioneer prior to attendance.

These terms and conditions may be modified or supplemented by language in the catalog available at the sale site or by announcement at the start of the sale. Bidders should be attentive to those announcements and to the catalog language.

### UNABLE TO ATTEND?

Bid on-line in real time at  
TO PARTICIPATE YOU MUST:

1. Register at [www.BidSpotter.com](http://www.BidSpotter.com). Use the link to BidSpotter on PMI's website calendar. DO IT NOW.
2. Either send wire transfer, or, overnight delivery service a cashier's check deposit in the amount of \$3,000 (U.S. Bidders) or \$10,000 (Foreign Bidders) to:  
**Plant & Machinery Inc.**  
1304 Langham Creek Drive, Suite 454,  
Houston, TX 77084  
Wire transfer instructions can be found at [pmi-auction.com](http://pmi-auction.com)

**You must be registered and have your deposit in the hands of Plant & Machinery, Inc. at least 24 hours prior to the start of the auction. Failure to register and/or failure to send your deposit to Plant & Machinery, Inc. may disqualify you from bidding. DON'T WAIT.**

If you need assistance, don't hesitate to call  
(713) 691-4401.

**ALL WEBCAST BIDS ARE SUBJECT TO AN 18%  
BUYER'S PREMIUM.**