



# ONLINE TIMED AUCTION

**HUGE QUANTITY OF LATE MODEL LABORATORY EQUIPMENT IN TEXAS;  
UNUSED REPLACEMENT PARTS INVENTORY FROM A MASSIVE SYNTHETIC WAX  
PLANT NEVER COMPLETED IN LOUISIANA; PILOT PLANT W/USED & UNUSED  
TEST SYSTEMS; UNUSED HEAT TRANSFER FLUID INVENTORY; MORE!**



AGILENT TECHNOLOGIES MDL 7890B GAS CHROMATOGRAPH W/AUTOSAMPLER

2016



CUSTOM PILOT PLANT W/CONTROL HOUSE



HUGE QTY. UNUSED PARTS INVENTORY

HUGE QTY.



VALVES AND CONTROLS



HUGE QTY.

HEAT TRANSFER FLUID

**SALE DATE: THURS.,  
NOVEMBER 19  
BIDS START CLOSING:  
10:00 A.M. Central Time**

By Order of the U.S. Bankruptcy Court, Southern District of Texas, Houston Division, Ronald J. Sommers CH 7 Trustee, Case #20-33109

**Online Timed Auction of  
JUNIPER SPECIALTY  
PRODUCTS LLC  
& SGCE LLC**

**With Assets Located at Five  
(5) LOCATIONS IN  
TEXAS & LOUISIANA**

**INSPECTION:** Varies by Location. See inside.

2017



STEAM SUPER HEATER



ANTON PAAR MDL MCR302 RHEOMETER



ONE OF SEVERAL CONFERENCE ROOMS

*Read Partial Terms and Conditions  
on Page 7*

**ONLINE BIDDING ONLY (NO ONSITE BIDDING): YOU MUST REGISTER IN ADVANCE FOR ONLINE BIDDING AT THIS AUCTION.**

Go to [www.pmi-auction.com](http://www.pmi-auction.com) and click on [BidSpotter.com](http://BidSpotter.com) on our calendar page for this auction sale.

**18% BUYER'S PREMIUM  
WILL APPLY**

Sale Conducted By:

**PLANT & MACHINERY INC.**

AUCTIONEERS • APPRAISERS • LIQUIDATORS • REAL ESTATE

Ron Moore, Texas Lic. #7314

Ron Moore, LA Lic. # 851 • PMI LA Lic. #AB-396

**HOUSTON • DALLAS • ST. LOUIS**

**Headquarters:**

**1304 Langham Creek Drive, Suite 454  
Houston, Texas 77084**

**PHONE: (713) 691-4401**

**FAX: (713) 672-7905**

**E-MAIL: [pmi@pmi-auction.com](mailto:pmi@pmi-auction.com)  
WEBSITE: [www.pmi-auction.com](http://www.pmi-auction.com)**



ANTON PAAR MDL. MCR302 RHEOMETER

2017

## LOCATION 1

SGCE, LLC

120 N Munger Street,  
Pasadena, Texas 77506

LABORATORY, PILOT PLANT, INVENTORY  
& OFFICES

### INSPECTION:

Tuesday & Wednesday, November 17 & 18,  
9:00 A.M. to 4:00 P.M. Each Day.  
No Appointment Necessary. Wear a Mask.



DYNATEC MDL. SMARTBOND  
BOND TESTING MACHINE

2017



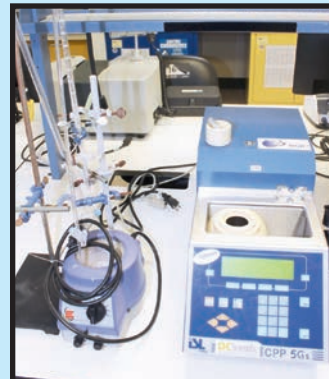
THERMO SCIENTIFIC HAAKE POLYLAB OS 7 MODULAR  
TORQUE RHEOMETER

2017

2017



ZEPELIN MDL. FML10 HIGH INTENSITY  
LABORATORY HENSCHEL MIXER



DC SCIENTIFIC MDL. V22301  
CLOUD AND POUR POINT  
ANALYZER

## LATE MODEL LABORATORY TESTING & MEASURING EQUIPMENT

AGILENT TECHNOLOGIES GCMS HEATED UV VIS FTIR GAS CHROMATOGRAPH, new 2016, w/Cary 630 FTIR; AGILENT TECHNOLOGIES MDL. 7890B GAS CHROMATOGRAPH W/AUTOSAMPLER W/(2) ARMS, new 2016; THERMO SCIENTIFIC HAAKE POLYLAB OS 7 MODULAR TORQUE RHEOMETER, new 2017, w/accessories incl. Mdl. CTW1000S conical twin screw compounder; ZEPELIN MDL. FML10 HIGH INTENSITY LABORATORY HENSCHEL MIXER, new 2017; ANTON PAAR MDL. MCR302 RHEOMETER, new 2017, w/Anton Paar Mdl. CTD450 Convection Temp. Device, air compressor, and Brooks Automation Mdl. 700179-09 high cap. chiller, new 2018; DYNATEC MDL. SMARTBOND BOND TESTING MACHINE, new 2017; MALVERN ANALYTICAL MDL. MASTERSIZER 3000E PARTICLE SIZE ANALYZER, new 2017; KOHLER MDL. K95600 DIGITAL PENETROMETER, new 2017; PAC ANTEK MDL. MULTI-TEK HNSIC HYDROGEN-SULFIDES-HALIDES TESTER, new 2011; AGILENT TECHNOLOGIES MDL. 7990A GAS CHROMATOGRAPH, new 2011; DC SCIENTIFIC MDL. HFP360 D86 FLASH POINT ANALYZER, new 2011; DC SCIENTIFIC MDL. V22301 CLOUD AND POUR POINT ANALYZER; new 2011; HUNTER LAB MDL. CQXT COLOR QUEST ANALYZER, new 2014; MUCH MORE – SEE CATALOG!

UNUSED



SPX APV GAULIN MDL. 18MR-8TA PAINTED FRAME  
LAB HOMOGENIZER



OPTIDIST HERZOG ATMOSPHERIC  
DISTILLATION TESTER

MALVERN ANALYTICAL  
MDL. MASTERSIZER 3000E  
PARTICLE SIZE ANALYZER

**SALE DATE:  
THURSDAY,  
NOVEMBER 19  
BIDS START  
CLOSING:  
10:00 A.M.  
Central Time**



2017



SAMPLE VIEW OF GLASSWARE



**2016**



**AGILENT TECHNOLOGIES MDL. 7890B GAS CHROMATOGRAPH W/AUTOSAMPLER**



**SAMPLE VIEW OF SPECIALIZED GLASSWARE**



**KOEHLER  
PENETROMETER**

## **LABORATORY SUPPORT EQUIPMENT**

**HUGE QUANTITY OF LAB GLASSWARE; AADCO ULTRA ZERO AIR GENERATOR W/ COMPRESSOR, new 2016; PROTON ON-SITE HYDROGEN GENERATOR, new 2016; RECIRCULATING BATHS; BALANCES; LAB HOODS; PH METERS; CENTRIFUGES; INCUBATORS; OVENS; MIXERS; STIRRERS; DESSICATORS; CHILLERS; PENETROMETERS; VACUUM PUMPS; HUMIDITY CHAMBERS; MUCH MORE-AS NEW AS 2018 - SEE LOT CATALOG.**

## **TECHNICAL LIBRARY**

**LARGE SELECTION OF SCIENTIFIC SELECTION OF REFERENCE MANUALS.**

## **OFFICE FURNITURE & EQUIPMENT**

**SEVERAL LARGE CONFERENCE TABLES W/CHAIRS; LARGE FLAT SCREEN TV/MONITORS; ELECTRONIC ADJUSTABLE HT. WORK TABLES; OFFICE DESKS AND CHAIRS; CREDENZAS; BOOKSHELVES; REFRIGERATORS AND LUNCHROOM EQUIPMENT; RECEPTION LOBBY AREA FURNISHINGS; DIGITAL PROJECTOR; CANON MDL. iPF815 LARGE FORMAT PRINTER; MUCH MORE - SEE LOT CATALOG.**



**BONNOT LAB  
EXTRUDER**



**SAMPLE VIEW OF FUME HOODS**

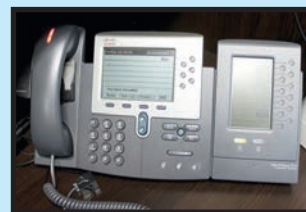


**CANON MDL. iPF815 LARGE FORMAT PRINTER**

**2014**



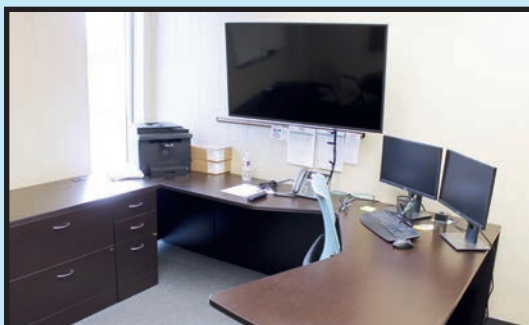
**HUNTER LAB MDL. CQXT COLOR QUEST ANALYZER**



**CISCO IP PHONE SYSTEM**



**ONE OF SEVERAL CONFERENCE ROOMS**



**SAMPLE VIEW OF OFFICE FURNITURE**



**PARTIAL VIEW OF  
TECHNICAL LIBRARY**



2012



CUSTOM PILOT PLANT  
W/CONTROL HOUSE



MCABEE FLARE CONTAMINANT  
BURNOFF FLARE



(1 OF 4) SNOWTECH PILOT PLANTS

### LOCATION 1, Continued

SAMPLE VIEW OF FISCHER-  
TROPSC WAX INVENTORY



### PILOT PLANT TEST EQUIPMENT

HUGE CUSTOM PILOT PLANT W/CONTROL HOUSE; MCABEE FLARE CONTAMINANT BURNOFF FLARE, new 2012; (4) SKID MOUNTED SNOWTECH SKID MOUNTED PILOT PLANTS (1 UNUSED) W/ OPERATORS CONSOLES AND MONITORING COMPONENTS; (6) OMEGA-KEMIX AND AMAR BRAND HIGH PRESSURE AUTOCLAVES; ASSORTMENT OF HEATED BATHS; HUMBOLDT SHAKER SIEVE; JULABO CIRCULATORS; QL MDL. 40GC LAB OVENS; IMMERSIBLE TANK HEATING ELEMENTS; INSULATED WRAP OVERLAYS FOR HEAT CONTAINMENT; MUCH MORE – SEE LOT CATALOG.

### PLANT SUPPORT EQUIPMENT

(3) FLUID CHILLERS AIR COOLED CHILLERS W/INTEGRAL PUMP AND TANK; (2) MICRO THERM CMX SERIES TEMPERATURE CONTROL SYSTEMS; (3) STERLING OIL HEATERS; CULLIGAN WATER TREATMENT SYSTEM; ADVANTAGE CHILLER; GAS DISTRIBUTION MANIFOLDS; MAINTENANCE DEPARTMENT W/MRO ITEMS INCL. FITTINGS, GAUGES AND AMPHENOLS; TOOLBOXES, FLAMMABLE MATERIAL STORAGE CABINETS SALVAGE BARRELS FOR LEAKING BARRELS; BARREL CONTAINMENT CATCH BASINS; MORE.

### CHEMICAL INVENTORY

FISCHER-TROPSC WAX; INTERTEK FT DISTILLATES; MOLECULAR SIEVE- DELTA ABSORBENTS; MOLECULAR SIEVE #3A-COASTAL CHEMICAL; HTFL OFF SPEC WAX; MORE.

### AIR COMPRESSORS

KAESER 15 HP MDL. SIGMA SK15 AIR, system incl. air receiver; KAESER MDL. AIRTOWER 3C, new 2018, 3 HP, built in air dryer and air receiver.

### HI-LIFT FORKLIFT

JLG 6,000-LB. CAP. MDL. G6-42A TELEHANDLER; new 2004, 42' max. lift ht., 28.97' max. forward reach, 6,600-lb. max. lift cap., 6,000 max. load at max. ht., 1,000-lb. cap. at max. reach, 12' turning radius, S/N 1600007697.

### 20' CONEX CONVERSION

CONEX 8' X 20' CONTAINER CONVERTED TO STORAGE ROOM/OFFICE, climate controlled, 120 v. power, heavy duty shelving, (2) large doors on one end, man door on the other, finished interior. (\$11,000 buildout, never put into use).

UNUSED



SNOWTECH SYSTEM CONTROL PANEL

UNUSED



SNOWTECH PILOT PLANT



(1 OF 3) STERLING OIL  
HEATERS



(1 OF 3) FLUID CHILLERS  
AIR COOLED CHILLERS



KAESER 15 HP MDL. SIGMA SK15  
AIR COMPRESSOR



JLG 6,000-LB. CAP. MDL. G6-42A TELEHANDLER



CONEX 8' X 20' CONTAINER  
CONVERTED TO STORAGE ROOM



## LOCATION 2 JUNIPER SPECIALTY PRODUCTS LLC

950 I-10 Service Road,  
Westlake, Louisiana 70669

**UNUSED SURPLUS EQUIPMENT AT THE  
JOBSITE OF A SYNTHETIC WAX PLANT  
CONSTRUCTION PROJECT**

### INSPECTION:

Tuesday & Wednesday, November 17  
& 18, 9:00 A.M. to 4:00 P.M. Each Day.  
Follow Signs to check-in desk. Bring your  
own PPE which will be required in order  
to inspect. Wear a Mask.

**HUGE  
QTY.**

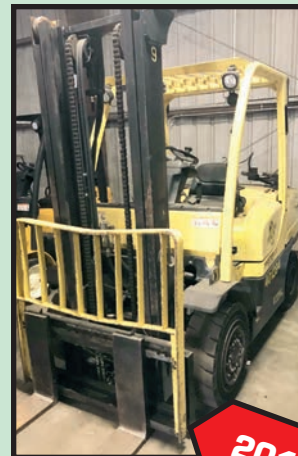


**VALVES AND CONTROLS**

**2013**



**HYSTER 6,000-LB. BASE CAP.  
MDL. H60FT FORKLIFT**



**HYSTER 8,000-LB.  
BASE CAP.  
MDL. H80FT FORKLIFT**

**2013**

## UNUSED PARTS INVENTORY PLUS SHOP EQUIPMENT

LARGE QUANTITY OF GATE VALVES, GLOBE VALVES; PLUG VALVES AND BUTTERFLY VALVES; VALVE  
ACTUATORS; EMERSON MOTORS AND CONTROLS; PRESSURE GAUGES; GASKETS; WIRE; TUBING;  
MISC. POWER TOOLS AND HAND TOOLS; WAREHOUSE SHELVING (SOME W/ROLLER DRAWERS);  
ELECTRICAL SWITCHGEAR; PALLET JACKS; H.D. 2-DOOR UTILITY CABINETS; PALLET RACK; TRASH  
CANS; MUCH MORE! – SEE LOT CATALOG.

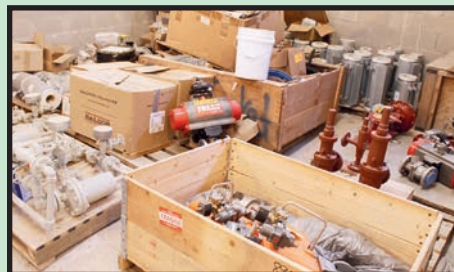
## USEABLE & SCRAP METAL MATERIALS

LARGE AREA CONTAINING ASSORTED NEW AND USED PIPING AND STRUCTURAL MATERIAL. PLEASE  
INSPECT.

## FORKLIFTS

**HYSTER 8,000-LB. BASE CAP. MDL. H80FT**, new  
2013, LPG, 98" 2-stage mast, 143" max. lift ht.,  
side shift, pneumatic style tires, 5,675 H.O.M., S/N  
S005V02296L.

**HYSTER 6,000-LB. BASE CAP. MDL. H60FT**, new  
2013, LPG, 104" 2-stage mast, 153" max. lift ht.,  
side shift, pneumatic style tires, 6,544 H.O.M., S/N  
L177V14436L.



**SALE DATE: THURSDAY, NOVEMBER 19**  
**BIDS START CLOSING: 10:00 A.M. Central Time**

**ONLINE BIDDING ONLY (NO ONSITE BIDDING): YOU MUST REGISTER IN  
ADVANCE FOR ONLINE BIDDING AT THIS AUCTION.**

Go to [www.pmi-auction.com](http://www.pmi-auction.com) and click on [BidSpotter.com](http://BidSpotter.com)  
on our calendar page for this auction sale.





## LOCATION 3 MAPLEWOOD INDUSTRIAL SERVICES, LLC

(A HUMIDITY CONTROLLED STORAGE FACILITY)

5175 Maplewood Drive,  
Sulphur, Louisiana 70663

**UNUSED SPARE PARTS INVENTORY –  
INTENDED FOR USE AS MRO FOR THE WESTLAKE  
SYNTHETIC WAX PLANT FACILITY**

**INSPECTION** Tuesday & Wednesday, November 17 & 18, 9:00 A.M. to 4:00 P.M. Each Day. Check in at front office and you will be escorted back to the auction items. Bring your own PPE which will be required in order to inspect. Wear a Mask.



## UNUSED PARTS INVENTORY

**VALVES W/ACTUATORS; PUMP SKIDS W/SEAL POTS; STAINLESS STEEL CABINETS; BOILER FEED SYSTEM PARTS; ASHCROFT PRESSURE GAUGES; VIBRATING FORK LIQUID LEVEL SWITCHES; CATTRACKER ASSEMBLY REACTORS; SYNGAS COMPRESSOR SPARES; SCALABLE PRESSURE TRANSMITTERS; ROSEMOUNT TEMPERATURE AND PRESSURE SENSORS AND TRANSMITTERS; FIRE WATER PUMPS; ELECTRIC MOTORS IN ALL SIZES; FLOW METERS; THERMOWELLS; TANK VENTS; MANIFOLD ASSEMBLIES; RELIEF VALVES; ASHCROFT BITETAL THERMOMETERS; LIGHTING FIXTURES; RUPTURE DISC; ROTEX L/S COBRA LIMIT SWITCHES; SUMP PUMPS; ASSORTED GENERAL PURPOSE PUMPS; HOT OIL PACKAGE PART; HYDROGEN FILTER MEMBRANES; MUCH MORE – SEE LOT CATALOG** (These items loaded at no charge. Coordinate pick up with onsite warehouse manager).



## UNUSED STEAM SUPER HEATER

**FSE ENERGY 30,000-LBS./HR. MDL. SH6G SUPER HEATER**, new 2015 and *unused*, natural gas fuel, max. operating pressure: 425 PSI; max. operating temperature: 750°F; heat capacity: 6,000,000 BTU input of 30k PPH, 425 PSI steam @ 437°F; output of 30k PPH, 410 PSI, 750°F Superheated steam. Power Flame Burner, Mdl. C8-G-30, *natural gas super heater system* is used to convert saturated steam or wet steam into superheated steam or dry steam. Designed for use w/Flue gas return. (This item will require third party professional rigging firm for load out).



UNUSED

2015



**LOCATION 4  
DGM WAREHOUSE**  
1813 Greens Road, Houston, Texas 77032  
**INSPECTION: Tuesday, November 17 or Wednesday,  
November 18 by Appointment Only.**  
**Call Ken Rayford at (281) 832-1443. Wear Mask.**

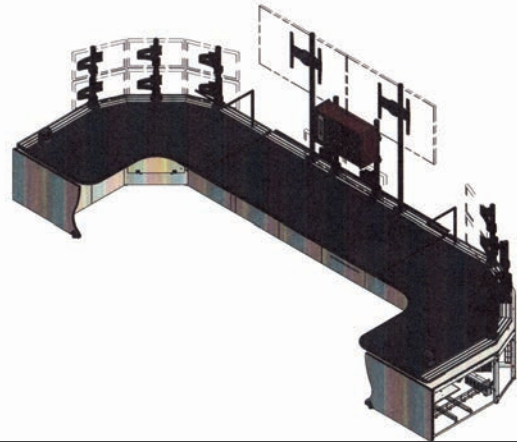
**UNUSED DRUMS OF HEAT  
TRANSFER FLUID**  
**(400) DRUMS OF SCHULTZ S715 (= 90,040 KG) ALKYL SUBSITUTED AROMATIC.**



**LOCATION 5  
EVOSITE CONTROL ROOMS**  
7240 Brittmore Road, Ste 100, Houston, Texas 77041

**INSPECTION: By Appointment Only.**  
**Call Ron Moore at (713) 691-4401. Wear Mask.**

**UNUSED CONTROL ROOM CONSOLE**  
**EVOSITE 19' L. CUSTOM DESIGNED CONTROL ROOM CONSOLE UNIT**, modular construction, ht. adjustable and fixed modules, electrified, multiple screen mounting rails, cable routing chain, (2) Iron Horse leather operators chairs. (See PMI website for technical info/drawings).



## PARTIAL TERMS & CONDITIONS

ALL BIDS ARE MADE AND RECEIVED UNDER THE TERMS HEREINAFTER SET FORTH TO WHICH TERMS BIDDERS AGREE BY MAKING THEIR BID AT THE SALE. THESE TERMS CANNOT BE ALTERED EXCEPT BY THE AUCTIONEER. NO EMPLOYEE HAS AUTHORITY TO MODIFY SAME. THE OWNER AND/OR AUCTIONEER RESERVE THE RIGHT TO ADD TO OR MODIFY THE TERMS OF THE SALES.

An 18% Buyer's Premium will apply.

This auction may require a credit or debit card 100% refundable deposit. Your credit/debit card added through the Bidspotter.com fully secure and PCI compliant registration process will be assessed a 100% refundable \$3000 (US Bidder) or a \$10,000 (Foreign Bidder) deposit in order to be approved to bid online within this auction. If you are unsuccessful in the auction, your card will be refunded of your deposit within 24 hours post auction.

Plant & Machinery, Inc. **DOES NOT** take credit cards for auction invoice payments. All payments must be made by Cash, Cashier's Check, Wire Transfer or Company Check with Bank Letter of Guarantee to Plant & Machinery, Inc. (PMI). Here is an example of what your letter should be: (Mr. "Customer Name" representing "Company Name" is a customer of this bank. This bank will guarantee unqualified payment to Plant & Machinery, Inc. on the account listed herein up to the amount of \$\_\_\_\_\_. This letter is good until December 18, 2020.

By registering, the Bidder hereby expressly authorizes PMI to charge the Credit Card if the Bidder fails to pay any invoice within forty eight (48) hours after each invoice is issued to Bidder.

All bidders are required to give full name, company name, address, phone, fax, email address, and bank information when registering. All bidders must register before bidding.

All bids must be paid in full within two business days after the bids have closed. The Auctioneer shall determine the bidding increments. Some items may be auctioned with reserve.

All purchases must be removed within two weeks after the bids have closed or within the timeframe posted on the sale web page. No lot can, on any account, be removed prior to PMI having been paid in full. Removal shall be at the expense, risk and liability of the Purchaser. Purchases will be delivered only on presentation of paid bill. Auctioneer shall not be responsible for goods not removed within the aforesaid time.

Riggers, movers, electricians or buyer performing work at the Auction Sites must provide Auctioneer with evidence of insurance. The insurance coverage must be at a level acceptable to Auctioneer and to the Seller.

All checks for deposits and balances due shall be payable to the order of PLANT & MACHINERY, INC. unless instructed otherwise. All bills must be paid to the Houston headquarters offices of the Auctioneer at 1304 Langham Creek Drive, Suite 454, Houston, TX, 77084 or by wire transfer directly to the bank specified in the wire transfer instructions provided for this on-line auction. The full purchase price on all lots sold to the same buyer must be paid within the time fixed and before removal of any of the goods.

THE AUCTIONEER SHALL NOT BE RESPONSIBLE FOR THE CORRECT DESCRIPTION, GENUINENESS, AUTHENTICITY OF, OR DEFECT IN ANY LOT, AND MAKES NO WARRANTY IN CONNECTION THEREWITH. NO SALE SHALL BE SET ASIDE NOR ALLOWANCE MADE ON ACCOUNT OF ANY INCORRECTNESS, ERROR IN CATALOGING, OR ANY IMPERFECTION NOT NOTED. NO DEDUCTION ALLOWED ON DAMAGED ARTICLES. ALL ARTICLES BEING EXPOSED FOR PUBLIC EXHIBITION, AND SOLD "AS IS" AND WITHOUT RECOURSE. ARTICLES ARE NOT WARRANTED AS MERCHANTABILITY OR FIT FOR ANY PARTICULAR PURPOSE, AND NO CLAIM MAY BE MADE BY PURCHASER RELATING TO THE CONDITION OR USE OF ARTICLES PURCHASED, OR FOR PROXIMATE OR CONSEQUENTIAL DAMAGES ARISING THEREFROM.

Articles purchased may not incorporate approved activating mechanisms, operating safety devices or safety guards, as required by OSHA or otherwise. It is Purchaser's responsibility that articles purchased be so equipped and safeguarded to meet OSHA and any other requirements before placing such articles into operation.

Purchaser agrees to indemnify and hold Auctioneer harmless from and against all claims and liabilities relating to the condition or use of the articles purchased or failure of user to follow instructions, warnings or recommendations of the manufacturer, or to comply with federal, state and local laws applicable to such articles, including OSHA requirements, or for proximate or consequential damages, costs or legal expenses arising therefrom.

No claims will be allowed after removal of goods from premises.

Auctioneer shall not, in any event, be liable for non-delivery or any other matter or thing, to any Purchaser of any lot other than for the return to the Purchaser of the deposit or sum paid on said lot, should the Purchaser be entitled thereto.

In default of payment of bills in full within the time therein specified, the Auctioneer in addition to all other remedies allowed by law, may retain all monies received as deposit or otherwise, as liquidated damages. Lots not paid for and removed within the time allowed herein may be resold at public or private sale without further notice, and any deficiency, together with all expenses and charges of re-sale, will be charged to the defaulting Purchaser.

Persons attending during exhibition, sale or removal of goods assume all risks of damage or of loss to person and property and specifically release the Auctioneer from liability therefor. Neither the Auctioneer nor his principal shall be liable by reason of defect in or condition of the premises on which the sale is held.

The Auctioneer reserves the right to withdraw from sale any of the property listed or to sell at this sale property not listed, and also reserves the right to group one or more lots into one or more selling lots or to subdivide into two or more selling lots. Whenever the best interest of a Seller will be served, the Auctioneer reserves the right to sell all the property listed, in bulk.

Where items are sold by estimated weight, count or measure, the Purchaser will be billed for and required to pay for the estimated weight, count or measure. If, upon delivery, any shortage exists, the Purchaser will receive a refund at the rate of purchase. If there be an excess, the Purchaser will be required to pay for such excess, at the rate of purchase.

The Auctioneer reserves the right to reject any and all bids, alter the order of sale, and accept bids made on behalf of the Seller.

The record of sale kept by the Auctioneer will be taken as final in the event of any dispute. The Auctioneer is acting as agent only and is not responsible for the acts of its principals. Purchaser or its representative will independently inspect the goods bid upon by the Purchaser, and acknowledges to the Seller that Purchaser is acquiring all goods "AS IS, WITH ALL FAULTS" and "WITH REMOVAL AT PURCHASERS' RISK AND EXPENSE" and agrees to protect, indemnify and hold harmless the Seller from any and all claims, demands, causes of actions, liabilities and judgments relating to the conditions or use of the goods.

Seller, if not the same as the Auctioneer, shall have the rights, protections and benefits afforded to the Auctioneer as set forth herein.

Although all information has been obtained from sources deemed reliable, the auctioneer and seller make no warranty or guarantee, expressed or implied, as to the accuracy of the information herein contained, or contained in our catalog. It is for this reason that buyers should avail themselves of the opportunity to make inspection prior to the auction. Although it is not likely, auction sales are subject to cancellation or postponement. Kindly contact auctioneer prior to attendance.

ANY ADDITIONAL PROVISIONS OR AMENDMENTS TO THE ABOVE LISTED TERMS WILL BE POSTED TO THE ON-LINE SALE WEB PAGE BY THE AUCTIONEER PRIOR TO THE START OF BIDDING.

## REGISTRATION

Bid on-line at: **BidSpotter.com**

1. Register to bid at BidSpotter.com. Use the link to BidSpotter on PMI's website calendar. DO IT NOW.
2. This auction may require a credit or debit card 100% refundable deposit. Your credit/debit card added through the Bidspotter.com fully secure and PCI compliant registration process will be assessed a 100% refundable \$3,000 (US Bidder) or a \$10,000 (Foreign Bidder) deposit in order to be approved to bid online within this auction. **DON'T WAIT.** If you are unsuccessful in the auction, your card will be refunded of your deposit within 24 hours post auction.

If you need assistance, don't hesitate to call (713) 691-4401.

**ALL BIDS ARE SUBJECT TO AN 18% BUYER'S PREMIUM.**

**NEED TO SELL  
EQUIPMENT?  
CALL 1-800-282-8466  
FOR A CONFIDENTIAL  
CONSULTATION**

**DON'T  
MISS THIS  
SALE!**



# PLANT & MACHINERY INC.

AUCTIONEERS • APPRAISERS • LIQUIDATORS • REAL ESTATE

P.O. Box 218568  
Houston, TX 77218-8568



**PUBLIC  
INVITED**

**BIDS START CLOSING:  
THURS., NOVEMBER 19  
10:00 A.M.**

## DATED MATERIAL - PLEASE DELIVER

**HUGE QUANTITY OF LATE MODEL LABORATORY  
EQUIPMENT IN TEXAS; UNUSED REPLACEMENT  
PARTS INVENTORY FROM A MASSIVE SYNTHETIC  
WAX PLANT NEVER COMPLETED IN LOUISIANA;  
PILOT PLANT W/USED & UNUSED TEST SYSTEMS;  
UNUSED HEAT TRANSFER FLUID INVENTORY; MORE!**



**ONLINE TIMED  
AUCTION**

**(5) LOCATIONS IN  
TEXAS & LOUISIANA**

**ATTENTION: PLANT MANAGER  
OR EQUIPMENT BUYER**

Presorted  
First Class Mail  
U.S. Postage  
PAID  
Eugene, Oregon  
Permit No. 17

By Order of the U.S. Bankruptcy Court, Southern District of Texas, Houston Division,  
Ronald J. Sommers CH 7 Trustee, Case #20-33109

**Online Timed Auction of**

**JUNIPER SPECIALTY PRODUCTS LLC & SGCE LLC**  
**With Assets Located at Five (5) LOCATIONS IN TX & LA**

**SALE DATE: THURS.,  
NOVEMBER 19  
BIDS START  
CLOSING: 10:00 A.M.  
CENTRAL TIME**



**KAESER 15 HP MDL. SIGMA SK15  
AIR COMPRESSOR**



**AGILENT TECHNOLOGIES  
GAS CHROMATOGRAPHS**



**JLG 6,000-LB. CAP. MDL. G6-42A TELEHANDLER**



**LABORATORY BALANCES**



**SHOP TOOLS**



**PAC ANTEK MDL. MULTITEK HNSIC  
HYDROGEN-SULFIDES-HALIDES TESTER**

**WIDE  
SELECTION**

**2011**