



ONLINE TIMED AUCTION

**CNC MACHINE TOOLS, FABRICATING EQUIPMENT,
TEST EQUIPMENT, HEAT TREAT, FORKLIFTS & MORE**



2006

HAAS GR-710
CNC GANTRY
ROUTER

CNC



2010

HAAS ES-5-4T
HORIZ.
MACHINING
CENTER

CNC

2012



CNC

HANKOOK PROTEC 11NF CNC FLATBED HOLLOW SPINDLE LATHE



FECO 500 DEGREE F. BATCH OVEN

**BIDS START CLOSING ON WEDNESDAY,
MARCH 27 AT 10:00 A.M. CDT**

**ONLINE BIDDING: YOU MUST REGISTER IN ADVANCE FOR ONLINE
BIDDING AT THIS AUCTION. Go to www.pmi-auction.com and click
on BidSpotter.com on our calendar page for this auction sale.**

INSPECTION: Tuesday, March 26, 9:00 A.M. to
4:00 P.M. or By Appt. See Each Location for Details.

**18% BUYER'S
PREMIUM
WILL APPLY**

2000



CNC

OKUMA & HOWA MDL. VTM-100 CNC VERT. TURNING CENTER

Read Partial Terms and Conditions
on Back Page of Brochure

Sale Conducted By:

PLANT & MACHINERY INC.

AUCTIONEERS • APPRAISERS • LIQUIDATORS • REAL ESTATE

Ron Moore, TX Lic. #7314

HOUSTON • DALLAS • ST. LOUIS

Headquarters:

**1304 Langham Creek Drive, Suite 454
Houston, Texas 77084**

PHONE: (713) 691-4401

FAX: (713) 672-7905

**E-MAIL: pmi@pmi-auction.com
WEBSITE: www.pmi-auction.com**



ONLINE TIMED AUCTION

**BIDS START CLOSING ON WEDNESDAY,
MARCH 27 AT 10:00 A.M. CDT**

**ONLINE BIDDING: YOU MUST REGISTER IN ADVANCE FOR ONLINE BIDDING
AT THIS AUCTION. Go to www.pmi-auction.com and click on BidSpotter.com
on our calendar page for this auction sale.**

LOCATION A TRAMAR INDUSTRIES

42850 West 10 Mile Road, Novi, Michigan 48375

INSPECTION: Tuesday, March 26, 9:00 A.M. to 4:00 P.M.

CNC FLATBED HOLLOW SPINDLE LATHES

HANKOOK PROTEC MDL. 11NF, new 2012, Fanuc 32i CNC control, 43.3" swing, 43.3" turning dia., 79" center distance, 33" front and rear chucks, 15" bar cap., 24.4" X-axis travel, 79" Z-axis travel, A2-20 spdl. nose, 400 RPM in (2) spd. ranges, 400 RPM spdl. spd., 60 HP motor, 8-station turret, S/N 43A09439.

HANKOOK PROTURN 60B, new 2012, Fanuc 0i-TD CNC control, 2-axis, 27.9" swing, 11.8" swing over carriage, 23.6" turning dia., 18" front and rear SWM pneumatic chucks, 7.5" bar cap., 14.9" X-axis travel, 63" Z-axis travel, A2-11 spdl. nose, 1,000 RPM spdl. spd., 30 HP motor, 8-station turret, S/N 43C09481.

HANKOOK PROTEC 7NB, new 2012, Fanuc 21i-TB CNC control, 2-axis, 29.5" swing, 18.9" swing over carriage, 29.5" turning dia., 21" chucks, 6.3" bar cap., 16.7" X-axis travel, 56.5" Z-axis travel, A2-11 spdl. nose, 1,000 RPM spdl. spd., 25 HP motor, 21" Samchully 3-jaw hyd. chuck, S/N A09435.



HANKOOK PROTURN 60B CNC FLATBED HOLLOW SPINDLE LATHE



HANKOOK PROTEC 11NF CNC FLATBED HOLLOW SPINDLE LATHE



HANKOOK PROTEC 7NB CNC FLATBED HOLLOW SPINDLE LATHE

LOCATION B APG

6039 Armour Drive, Houston, Texas 77020

INSPECTION: Tuesday, March 26, 9:00 A.M. to 4:00 P.M.

CNC LATHE

HAAS MDL. SL-20, new 9/2008, Haas CNC control, 20 HP Vector drive, Samchully 8" Mdl. HS08 pwr. chuck, bolt on machine in-motion 6-positioning turret system w/DMH software included, MIM plastic shaving vacuum system, tooling cart, S/N 3083130, *Machine used to mfg. plastic seals.*



LOCATION C MOORE FABRICATION

5645 North Dale Street, Houston, Texas 77087

INSPECTION: Tuesday, March 26, 9:00 A.M. to 4:00 P.M.

CNC GANTRY ROUTER

HAAS GR-710, New in 2006, 84" x 120" vacuum tbl., 121" X, 85" Y, 24" Z-axis travels, CAT-40, 10,000 RPM, 15 HP, 20-pos. ATC, S/N 42370. Machine cutting plastics in a climate controlled facility. (See Video in Catalog)

CNC TOOL ROOM MILL

HAAS TM-1, New in 2007, 47.75" x 10.75" tbl. size, 30" X, 12" Y, 16" Z-axis travels, CAT-40, 7.5 HP, 10-pos. ATC, S/N 1058803. Machine cutting plastics in a climate controlled facility.

HIGH PRESSURE COOLANT SYSTEM

CHIP BLASTER CHILLER MDL. SA34K, new 2014, S/N K186.

CNC LATHES

HAAS MDL. SL30T, new 2008, Haas CNC control, 30" swing, 34" cutting length, 3" bar cap., S/N 3082592. Machine cutting plastics in a climate controlled facility.

HAAS MDL. ST20, new 2012, Haas CNC control, 20.8" swing over cross slide, 21" cutting length, 2" bar cap., S/N 30914994. Machine cutting plastics in a climate controlled facility.

VERTICAL TURRET MILL

SEIKI-XL MDL. 3VH, new 1988, 10" x 50" tbl., 3 HP motor, variable spd. head, long. pwr. feed.

VERTICAL BANDSAW

POWERMATIC MDL. BW900, S/N 8979006.

MISCELLANEOUS SHOP & WAREHOUSE EQUIPMENT

CUSTOM TABLE SAW.

ROTARY SCREW TYPE AIR COMPRESSOR

SULLIVAN PALATEK MDL. 25D4, 25 HP motor.

FORKLIFT

NISSAN 6,000-LB. CAP. MDL. OPTIUM 60, LP pwr., 187" max. ht., side-shift, cushion tires.



HAAS GR-710 CNC GANTRY ROUTER



HAAS TM-1 CNC TOOL ROOM MILL



CHIP BLASTER CHILLER HIGH PRESSURE COOLANT SYSTEM



HAAS MDL. SL30T CNC LATHE



HAAS MDL. ST20 CNC LATHE



SEIKI-XL MDL. 3VH VERT. TURRET MILL



NISSAN 6,000-LB. CAP. FORKLIFT



CUSTOM TABLE SAW



POWERMATIC MDL. BW900 VERT. BANDSAW



SULLIVAN PALATEK ROTARY SCREW TYPE AIR COMPRESSOR

DON'T MISS THIS SALE!

LOCATION D SCHAFFER PRECISION MACHINING

7470 Miller Road 2,
Houston, Texas 77049

INSPECTION: By Appointment Only,
Call Tom Stone at (713) 494-2836 to Schedule.



OKUMA IMPACT LU45 4-AXIS CNC LATHE

CNC LATHES

OKUMA IMPACT LU45M 4-AXIS, Mdl. OSP7000L, new 1995, CNC control, 33.07" max. swing over bed, 21.85" swing over cross slide, 78.74" distance btwn.centers, 4-1/8" bar cap., 12-pos. upper turret w/live milling, 10-pos. lower turret, 24" Kitigawa B-24 power chuck, Mayfran chip conveyor, misc. VDI tooling and misc. tool holders available, full set of manuals, S/N 0073. **(See Video in Catalog)**

MAZAK POWER MASTER N 2-AXIS FLAT BED, Mdl. PMNX-3000U, new 1998, Mazatrol T-Plus CNC control, 34" swing over bed, 22" swing over the cross slide, 120" distance btwn.centers, 4-1/8" spdl. bore, 24" Kitigawa B-24 power chuck, 8-pos. front turret, 4-pos. rear turret, tail stock included (stored on pallet), chip conveyor, full set of manuals, S/N 134382.



MAZAK POWER MASTER N 2-AXIS FLAT BED CNC LATHE

2007

10" SPDL.
BORE



CHALLENGER MICROCUT 33" X 80" MDL. FTC-35 CNC
HOLLOW SPINDLE LATHE

LOCATION E DEL MACHINE

10145 Tanner Road, Houston, Texas 77041

INSPECTION: Tuesday, March 26, 9:00 A.M. to 4:00 P.M.

CNC HOLLOW SPINDLE LATHE

CHALLENGER MICROCUT 33" X 80"
MDL. FTC-35, new 2007, Fanuc Oi-TC
CNC control, 33.85" swing over bed,
20.47" swing over cross slide, 78.74" max.
cutting length, 10" spdl. bore, spds: 10-
750 RPM, 40 HP motor, (2) steadyrests,
8-pos. rear turret, S/N 9757.

IMAGE DIMENSION MEASURING SYSTEM

KEYENCE IM-6020, 10.4" LCD monitor, 1"
6.6 mega pixel image sensor.



KEYENCE IMAGE DIMENSION
MEASURING SYSTEM

**BIDS START CLOSING
ON WEDNESDAY,
MARCH 27
AT 10:00 A.M. CDT**

**ONLINE BIDDING: YOU MUST
REGISTER IN ADVANCE FOR ONLINE
BIDDING AT THIS AUCTION. Go to
www.pmi-auction.com and click on
BidSpotter.com on our calendar page
for this auction sale.**

LOCATION F BRMW

12612 Ronaldson Road, Baton Rouge, LA 70807

INSPECTION: By Appointment Only, Call Russell Young at (225) 405-8928 to Schedule.

TABLE TYPE HORIZONTAL BORING MILL

5" BULLARD MDL. 75, 54" x 140" tbl., 72" vert. travel, outboard support, facing
head, D.R.O., S/N 29927.



2000

**LARGE
CAPACITY**



OKUMA & HOWA MDL. VTM-100 CNC VERT. TURNING CENTER

CNC VERTICAL TURNING CENTER

OKUMA & HOWA MDL. VTM-100, new 2000, Fanuc 18T CNC control, 36" chucks, 25.96" X-axis travel, 22.07" Z-axis travel, 360 deg. C., 2-pallet changer, 39.37" max. cutting dia., 33.07" max. cutting length, 30HP main spdl. 4-500 RPM, 10 HP milling spdl., 4,500 RPM, CAT-50 taper tooling, 30-pos. ATC, Renishaw Gauging, high pressure coolant, 943 spdl. hrs., S/N 10043 (*Note: excellent condition).

LOCATION G HARDY MACHINERY

3610 Meridian Street North,
Huntsville, Alabama 35811

INSPECTION: Tuesday, March 26,
9:00 A.M. to 4:00 P.M.



SUNNEN ECLIPSE MDL. EC-3500-E HORIZ. HONE

HORIZONTAL HONE

SUNNEN ECLIPSE MDL. EC-3500-E, new 1997, .060"-6.5" cap., .060"-3.94" cap. pwr. stroke, .24"-3.7" stroke, spdl. spds: 200-3,000 RPM, stroke rate: 60-500 SPM, 5-1/2 HP spdl. motor, 1-1/2 HP stroke motor, auto. sizing, 2-stage feed rough and finish, auto. stone wear compensation, auto. feed cycle, Sunnen bore gauge system (PG710S, PG810S, (2) ea. PG400, 35 gal. honing oil), S/N 1V1-1725.

LOCATION H BADGER INDUSTRIAL SERVICES & SALES

8484 Gulf Fwy., Houston, Texas 77017

INSPECTION:

Tuesday, March 26, 9:00 A.M. to 4:00 P.M.

Call Robert Alford at (713) 306-0399 to Schedule.

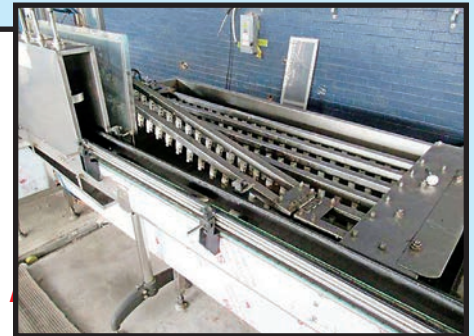
AEROSOL & PROPELLANT PACKAGING LINES

LINE 1: Feed tbl. w/stainless chain conveyor, Meitar Mdl. QGQ 750 auto. aerosol filling and capping machine w/(3) filler heads and (2) capping heads, weigh station w/Siemens Smartline touch screen weight checking system, 342-360 ml fill weight range, auto. valve press and cap machine, temp. controlled water bathing station w/digital display, BS 400LA auto. shrink wrapping machine, heat shrink and tunnel station. Includes (20) rolls of shrink wrap.

LINE 2: Feed tbl. w/stainless chain conveyor, QJG auto. aerosol filling and capping machine w/(3) filler heads and (2) capping heads, weigh station w/Weinview scale and display, 342-360 ml fill weight range, temp. controlled water bathing station w/digital display, automatic valve press and cap machine, BS 400LA auto. shrink wrapping machine, heat shrink and tunnel station. Includes (20) rolls of shrink wrap.

SEMI-AUTOMATIC PROPELLANT/AEROSOL FILLING MACHINE

MEITAR QGBS SEMI-AUTO PROPELLANT FILLER, 30-500ml filling range, 800-1,200 can/hr. cap.





ONLINE TIMED AUCTION

**BIDS START CLOSING ON WEDNESDAY,
MARCH 27 AT 10:00 A.M. CDT**

**ONLINE BIDDING: YOU MUST REGISTER IN ADVANCE FOR ONLINE BIDDING
AT THIS AUCTION. Go to www.pmi-auction.com and click on BidSpotter.com
on our calendar page for this auction sale.**



TANAKA CNC GANTRY LASER CUTTING SYSTEM



CNC

**FEMCO WBMC-100 CNC
HORIZ. BORING MILL**



CNC

**MAZAK MEGATURN A-12NX CNC
VERT. TURNING LATHE**

LOCATION I ACE WORLD COMPANIES

10200 Jacksboro Hwy., Fort Worth, Texas 76135

INSPECTION: Tuesday, March 26, 9:00 A.M. to 4:00 P.M.

CNC GANTRY LASER CUTTING SYSTEM

TANAKA LMXV-Z30-TF6000E, Fanuc 16i-LB CNC control, Fanuc TF6000E 6,000 watt laser power supply, 120" cutting width, 360" cutting length, 7.87" Z-axis travel, 1" cutting cap.

CNC HORIZONTAL BORING MILL

FEMCO WBMC-100, 3.94" spdl. dia., #50 taper, Fanuc 15I CNC control, 63" x 56" 4th axis rotary table, 74.74" X, 70.86" Y, 63" Z-axis travels, 1,000 RPM max. spdl. speed, 25 HP.

CNC VERTICAL TURNING LATHE

MAZAK MEGATURN A-12NX, Mazatrol T-Plus CNC control, 57" max. swing, 53" max. turning dia., 48" max. work ht., (2) pallets, 49" pallet dia., 30-pos. ATC, 1-200 RPM tbl. spds., 60 HP tbl. motor, 20 HP milling spdl.

HORIZONTAL MILL

CINCINNATI GILBERT, 70" x 158" tbl. size, 119" X, 37" Y, 22" Z-axis, Newall DRO, S/N 1097.

ENGINE LATHE

40" X 150" SIDNEY, 40" swing over bed, 25" swing over cross slide, 150" btwn. centers, 24" dia. 4-jaw chuck (2) steady rests.

FORKLIFTS

(2) ELECTRIC SWING REACH MAN-UP TURRET FORKLIFTS, Yale NTA030SB, 3,000-lb. cap. 326" max. load ht., S/N B868T01713F, S/N B868T01726F.



CNC

CINCINNATI GILBERT HORIZ. MILL



SIDNEY 40" X 150" ENGINE LATHE



**SAMPLE VIEW OF ELECTRIC SWING REACH
MAN-UP TURRET FORKLIFTS**





AMADA VIPROS 255 CNC PUNCH

LOCATION J

SAFE AIR TECHNOLOGY LLC

4133 Evan Brooks Drive, Baton Rouge, Louisiana 70814

INSPECTION:
Tuesday, March 26,
9:00 A.M. to 4:00 P.M.



US INDUSTRIAL 1/4" X 10' PLATE SHEAR

PLATE ROLL
LEMAS 5' X 12 GAUGE PLATE ROLL.

CNC PRESS BRAKE
US INDUSTRIAL 10' X 130 T. CNC PRESS BRAKE.

SHEAR
US INDUSTRIAL 1/4" X 10' PLATE SHEAR.

CNC PUNCH
AMADA VIPROS 255 CNC PUNCH.

DON'T MISS THIS SALE!



US INDUSTRIAL 10' X 130 T.
CNC PRESS BRAKE



LEMAS 5' X 12 GAUGE PLATE ROLL

LOCATION K

ALLEN ENGINEERING CORPORATION

819S 5th Street, Paragould, Arizona 72450

INSPECTION: Tuesday, March 26,
9:00 A.M. to 4:00 P.M.

SHEAR
ACCUSHEAR METAL SHEAR MDL. 837512, 3-3/4 cap., 12' length, squaring arm and materials table, S/N 3425.

CNC TURRET PUNCH PRESS
AMADA-COMA 50 T. CNC TURRET PUNCH PRESS MDL. 506072, 44-pos. turret, includes tooling, S/N C67639.

HYDRAULIC PUNCH
W.A. WHITNEY 15 T. HYDRAULIC PUNCH, Mdl. 615, 28XX quick change punch head, S/N N.A.

HYDMECH SAW
HYDMECH SAW MDL. S20A, S/N 80904565FD

PLASMA CUTTING MACHINE
KOMATSU HIGH DEFINITION MDL. KPG940 PLASMA CUTTING MACHINE, S/N 045Y.D1.23.

SAND BLASTER
TINCO MDL. 48/BP SAND BLASTER, S/N 48121/7.

GRINDER
MAKINO MDL. C-40 GRINDER, S/N 8779.

RIVET MACHINE
ADTECH IMPACT RIVETER MDL. RHV2000, S/N 8779.

LATHE
HENDY MDL. 14 X 54, S/N 1312.

CNC MACHINING CENTER
OKUMA MDL. MC400H, operated by Okuma OSP5020M computer.



AMADA-COMA 50 T. CNC
TURRET PUNCH PRESS



KOMATSU PLASMA CUTTING MACHINE

TC

TC

TC

TC

LOCATION L FURNACE OVENS & BATHS

195 Campbell Street,
River Rouge,
Michigan 48218

INSPECTION: Tuesday, March 26,
9:00 A.M. to 4:00 P.M.



FECO BATCH OVEN



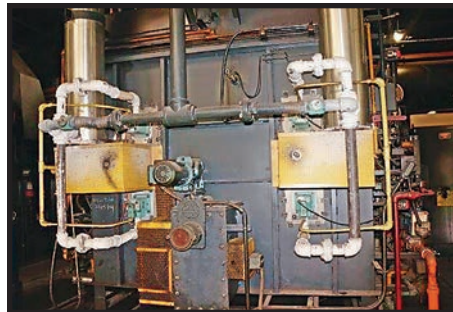
FECO BATCH OVEN

INTEGRAL QUENCH FURNACE

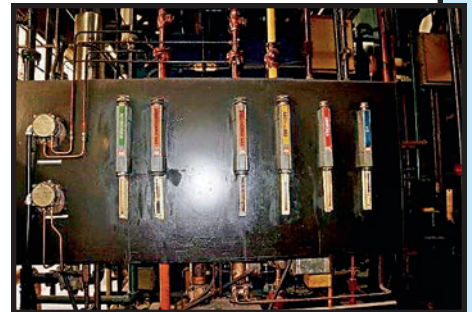
SURFACE COMBUSTION SUPER ALLCASE,
work opening 36"W. x 30"H. x 48"L., 1,750 de-
gree F, gas fired, SSI controls, dual quench cylin-
ders and rear handler (free loading).

BATCH OVEN

FECO, electrically heated batch oven w/a vert.
lift door on each end, work opening is 81"W. x
92"H. x 25'L., 480 v., 500 degree F (free
loading).



SURFACE COMBUSTION SUPER ALLCASE INTEGRAL QUENCH FURNACE



LOCATION M LANGHAM CREEK MACHINE WORKS

4408 Joyce Boulevard,
Houston, Texas 77084

INSPECTION: Tuesday, March 26,
9:00 A.M. to 4:00 P.M.

HORIZONTAL MACHINING CENTER

HAAS ES-5-4T, new 2010,
Haas CNC control, Renishaw
probe, 40" X, 18" Y, 22" Z-axis
travels, CAT-40, inline direct
drive spindle, through spindle
coolant, 12,000 RPM, 24-pos.
ATC, S/N 2053095.

VERTICAL MACHINING CENTER

HAAS VF-3, new 1997, Haas
CNC control, 40" X, 20" Y, 25"
Z-axis travels, CAT-40, 15 HP,
20-pos. ATC.

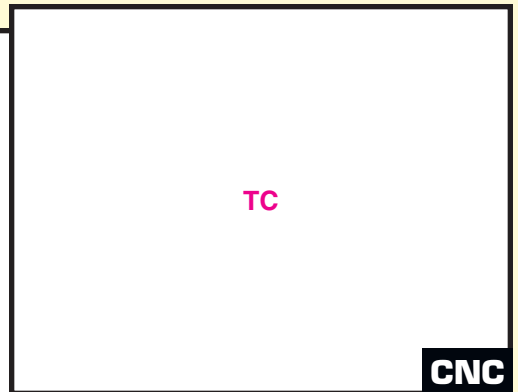
HAAS VF-1, new 1996, Haas
CNC control, 20" X, 16" Y, 20"
Z-axis travels, CAT-40, 20-pos.
ATC.



HAAS ES-5-4T CNC HORIZ. MACHINING CENTER



HAAS VF-3 CNC VERT. MACHINING CENTER



HAAS VF-1 CNC VERT. MACHINING CENTER

**DON'T
MISS
THIS
SALE!**

LOCATION N DALLAS AREA STORAGE FACILITY

2120 North Loop 12,
Irving, Texas 75061

INSPECTION: Tuesday, March 26,
9:00 A.M. to 4:00 P.M.

2009



HYSTER 12,000-LB. CAP. FORKLIFT

FORKLIFTS

TAYLOR 30,000-LB. CAP. MDL. T300M, new 2006, diesel engine, 156" mast, 96"L. forks, dual drive pneu. tires, side shift, fork positioner, S/N S-BF-34119.

HYSTER 15,500-LB. CAP. MDL. H155FT, new 2015, diesel engine, 173" mast, 72"L. forks, dual drive pneu. tires, side shift, S/N K006V02960N.

HYSTER 12,000-LB. CAP. MDL. S120FT, new 2009, LPG engine, 208" triple stage mast, 48"L. forks, cushion tires, S/N G004V04411G.

HYSTER 12,000-LB. CAP. MDL. S120XM, new 2002, LPG engine, 112" mast, 42" forks, 42" forks, cushion tires, S/N E004V01572Z.

CATERPILLAR 10,000-LB. CAP. MDL. DP45N1, new 2014, diesel engine, 97"/145" mast, 60"L. forks, pneu. tires, side shift, S/N AT19E50018.

(2) DAEWOO 6,000-LB. CAP. MDL. G30E-3, LPG engine, 186" triple stage mast, 42"L. forks, pneu. tires, side shift, S/N DX-00291, S/N G9-00249.

TC

TC

TC

(2) TOYOTA 3,000-LB. CAP. MDL. 8FGCU15, new 2013, LPG engine, 80" trucker mast, 42"L. forks, cushion tires, S/N 20884, S/N 21298.

YALE 3,000-LB. CAP. MDL. GLP030, LPG engine, 84" trucker mast, 42"L. forks, pneu. tires, S/N

TOYOTA 5,000-LB. CAP. MDL. 7FGCU25, new 2005, LPG engine, 189" triple stage mast, 42"L. forks, S/N 89.

(12) UPCOMING AUCTIONS & SALES

TUESDAY, APRIL 2 • 10:00 A.M.
APPLIED MACHINERY CORP.

6545 North Eldridge, Houston, TX 77041
CNC MACHINE TOOLS • FAB EQUIP.
FORKLIFTS • OILFIELD EQUIP.

WEDNESDAY, APRIL 3
10:00 A.M.

APPLIED MACHINERY CORP.

7605 Wright Rd., Houston, TX 77041
CNC & MANUAL FAB. EQUIP. • WELDERS
CRANES • FORKLIFTS

THURSDAY, APRIL 4
10:00 A.M.

APPLIED MACHINERY CORP.

14737 Firetower Rd., Conroe, TX 77306
FAB. EQUIP. • DRILLING RIG • CRANE
FORKLIFTS • MORE!

BID OPENING:
TUESDAY, APRIL 16
SEALED BID SALE

UNUSED THERMATOOL (INDUCTOTHERM)
PIPE MFG. INDUCTION HARDENING & TEMPERING LINE

AUCTIONEER: Ron Moore, TX Lic. # 7314

DOWNLOAD BROCHURES AT
www.pmi-auction.com

WEDNESDAY, APRIL 24
10:00 A.M.

SCHILL STEEL SERVICES

3001 W. 11th, Houston, TX 77008
(5) PLASMA & OXY CUTTING SYSTEMS
FAB. EQUIP. • MACHINE TOOLS • OVERHEAD
CRANES • FORKLIFTS • MORE!

THURSDAY, APRIL 25
10:00 A.M.

CHALLENGE MACHINE & FAB.

6460 Aldine Bender Rd., Humble, TX 77396
PRECISION MACHINE SHOP & FAB. FACILITY CLOSING!

TUESDAY, APRIL 30
10:00 A.M.

Surplus to the Ongoing Operations of
**SALAMANDER ADVANCED
HEATER SOLUTIONS**

5521 Gasmer St., Houston, TX 77035
OILWELL DOWNHOLE DRILLING SUPPORT EQUIP.
TUBE WELDERS & FURNACES • ELECTRICAL SWITCH
GEAR • GENERATORS & MORE!

THURSDAY, MAY 2 • 10:00 A.M.
CHICKASHA MANUFACTURING

5501 Hwy. 81 South, Chickasha, OK 73018
CNC & MANUAL MACHINE TOOLS • FABRICATING EQUIP.

TUESDAY, MAY 7 • 10:00 A.M.
VAAN GASKETS, INC.

3541 Bacor Rd., Houston, TX 77084

THURSDAY, MAY 16
10:00 A.M.

**CHAPARRAL
MANUFACTURING CO.**

311 Hwy. 69 South, Trenton, TX 75490
PRECISION CNC MACHINE SHOP CLOSING!

TUESDAY, MAY 21
10:00 A.M.

VICTORIA CABINETWORKS, INC.
2002 Delmar Dr., Victoria, TX 77901

THURSDAY, MAY 30
10:00 A.M.

ECONOMY IRON WORKS, INC.
635 South Peters St.,
New Orleans, LA 70130

**AVAILABLE FOR SALE
BY PRIVATE TREATY**

Surplus to the Needs of Inland Marine
Equipment, Jeffersonville, Indiana

LOCATION O

C.I. ACTUATION

1617 East Richey Road, Houston, Texas 77073

INSPECTION: By Appointment Only, Call Josh Green at (281) 409-0154

WALL MOUNTED PIVOT JIB CRANES

(3) HARRINGTON 3 T. CAP. X 20' REACH, 10' beam, (2) swivel points, Harrington Mdl. 41760 3 T. electric hoist, S/N 000001, S/N 000003, S/N 000004.

WOOD AUGER

KOMAR INDUSTRIES, 7' x 6' load area, approx. 20 HP, S/N 1659.

BLAST CABINET

EMPIRE MDL. PF-3648, S/N 149598-2.

VERTICAL VALVE TEST UNIT

PC PROGRETTI MDL. BV-M/60, new 2016, 60 T. max. load, 450 bar max. h2o, 250 bar max. gas, S/N PC504.

HORIZONTAL VALVE TEST UNITS

ZENG XIN LFB-P/M 1000, new 2015, 500–1,000mm test dia., S/N 1500923148.

ZENG XIN LFB-P/M 800, new 2015, 400–800mm test dia., S/N 150921147.

ZENG XIN LFB-P/M 500, new 2015, 250–500mm test dia., S/N 150915146.

ZENG XIN LFB-P/M 300, new 2015, 80–300mm test dia., S/N 150910145.

TURN TABLE BLAST CABINET

WHEELABRATOR, 48" turn tbl. dia., dust collection unit, S/N 300476.

FRONT LOAD CLEANING SYSTEM

JRI INDUSTRIES MDL. PCS-3136EA, 31" turn tbl., 31" working ht., S/N 11925-2217.

ENGINE LATHE

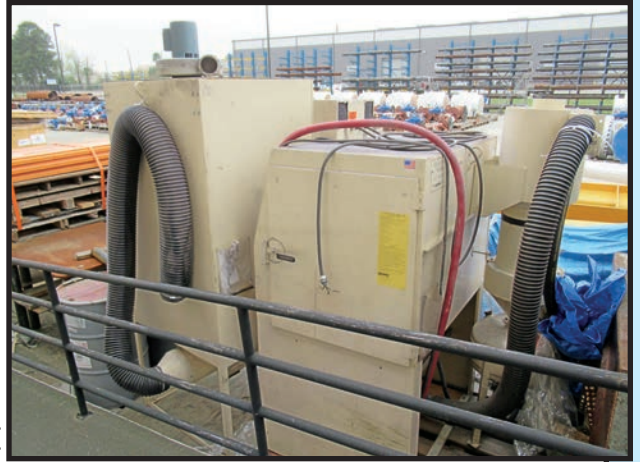
30" X 120" MAZAK LATHE, 4" bore, taper attach., 3-jaw chuck, steady rest.

PAINT BOOTH

CUSTOM, 3-sided, 20' x 16' x 10' ht., exhaust system, lights, MCI controls.



HARRINGTON
3 T. X 20'
WALL MTD.
PIVOT
JIB CRANES



EMPIRE
MDL. PF-3648
BLAST
CABINET



PC
PROGRETTI
VERT. VALVE
TEST UNIT



ZENG XIN
LFB-P/M 1000
HORIZ. VALVE
TEST UNITS

**BIDS
START
CLOSING
ON WED.,
MARCH 27
AT
10:00 A.M.
CDT**



JRI
INDUSTRIES
FRONT LOAD
CLEANING
SYSTEM



20' X 16' X 10'
PAINT BOOTH

LOCATION P GULF COAST CRATING STORAGE

1310 E. Richey Road,
Houston, Texas 77073

INSPECTION:
By Appointment Only,
Call Josh Green at
(281) 409-0154

WELDING POSITIONERS

(3) PRESTON EASTIN 3,000-LB. CAP. MDL. PE30HD, 18,000 rotation, 36,000 tilt, new 2017, PC-30A chuck, LDRTU-5M-2C track, 20' dist. btwn. head and tailstock, RPJS50 roller steady rest, TS-30 tailstock, S/N PE30HD-608, S/N PE30HD-605, S/N PE30HD-610.

GUNDRILL

MEGA MDL. M50-1033, 1/2" dia. x 15" long cap., S/N 498.

CNC LATHE

CINCINNATI MDL. TC250, Hawk Acramatic A2100 CNC control, 20.8" max. swing, 12-pos. turret, 10" chuck, chip conveyor, S/N 7060A00KK0090.

GEAR HOBBERS

FELLOWS PFAUTER.

GOULD & EBEHARDT, S/N 69778.



PRESTON EASTIN 3,000-LB. CAP.
WELDING POSITIONER



CINCINNATI MDL. TC250 CNC LATHE

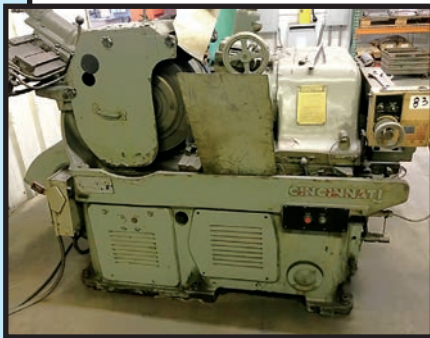


FELLOWS PFAUTER
GEAR HOBBER

LOCATION Q SPRING BOLT & NUT MANUFACTURING

3280 Wheat Street, Houston, Texas 77086

INSPECTION: Tuesday, March 26, 9:00 A.M. to 4:00 P.M.



CINCINNATI #2 CENTERLESS GRINDER



VICTOR CENTERLESS GRINDER

DRILL PRESS

CINCINNATI BICKFORD 24", super service, S/N 2L1525.

PARTS WASHER

CUDA MDL. H20-2216 PARTS WASHER, S/N 10434550-100014.

RADIAL ARM DRILL

Ooya MDL. RE-1225H RADIAL ARM DRILL, S/N 0A6-1404.

VIBRATORY FINISHING MACHINE

20 CU. FT. VIBRATORY FINISHING MACHINE, S/N SB.

CENTERLESS GRINDERS

CINCINNATI #2 CENTERLESS GRINDER, S/N 2M2H1K/870.

VICTOR CENTERLESS GRINDER, S/N 12810.

THREADER

LANDIS 4" CUT THREADER, S/N 1340.



CINCINNATI
BICKFORD
24" DRILL PRESS



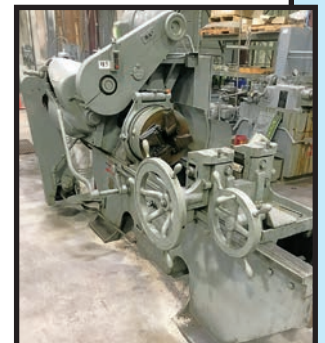
CUDA H20-2216
PARTS WASHER



Ooya RE-1225H
RADIAL ARM DRILL



20 CU. FT. VIBRATORY
FINISHING MACHINE



LANDIS 4" CUT THREADER

LOCATION R

FABCORP, INC.

6951 West Little York, Houston, Texas 77040

INSPECTION: Tuesday, March 26, 9:00 A.M. to 4:00 P.M.



PNEUMATECH AIR DRYER



TRU-TON CHILLER



RITE-TEMP CHILLER

**STOPA TKL
MATERIAL
STORAGE
SYSTEM**



2005



HYSTER 5,000-LB. CAP. FORKLIFT



HYSTER 5,000-LB. CAP. FORKLIFT

MATERIAL STORAGE SYSTEM

2005 STOPA TKL, (3 T. per pallet – 60" x 120"): dual tower (5' x 10', 3 T. per shelf) TKL storage system for 18' ceiling ht. min., (42) pallets w/3.5" stacking ht., (2) raw material carts to exterior of cage, material input scissors cart, material weighing scale, safety fencing and light barriers, cell server software, not operating requires software update from STOPA.

RADIAL ARM DRILL

3' X 9" GIDDINGS & LEWIS BICKFORD, Chipmaster, S/N 951-00565-74.

VERTICAL BAND SAW

DOALL MDL. V-26, contouring saw, 26" tbl., S/N 26522770.

AIR DRYERS

PNEUMATECH MDL. ADW-250, 250 SCFM, 150 PSI.

INGERSOLL RAND MDL. TMS2000, 232 max. PSI.

CHILLERS

TRU-TON T.J. SNOW MDL. 100AC, S/N 5485.

RITE-TEMP RTR503AWS, S/N 502943271.

FORKLIFTS

HYSTER 5,000-LB. CAP., MDL. S50XM, S/N D187V-29415A.

HYSTER 5,000-LB. CAP., MDL. S50XM, S/N D187V-26839Z.



RELIANCE 100 HP MOTORS



ALLIS CHALMERS 16,000 HP DIESEL ENGINE

MOTORS

(2) RELIANCE MOTORS MDL. P3GG5552D, 100 HP, on pallet.

DIESEL ENGINE

ALLIS CHALMERS, 16,000 HP, S/N 16-10511.

(12) UPCOMING AUCTIONS & SALES

TUESDAY, APRIL 2 • 10:00 A.M.

APPLIED MACHINERY CORP.

6545 North Eldridge, Houston, TX 77041

CNC MACHINE TOOLS • FAB EQUIP.
FORKLIFTS • OILFIELD EQUIP.

WEDNESDAY, APRIL 3

10:00 A.M.

APPLIED MACHINERY CORP.

7605 Wright Rd., Houston, TX 77041

CNC & MANUAL FAB. EQUIP. • WELDERS
CRANES • FORKLIFTS

THURSDAY, APRIL 4

10:00 A.M.

APPLIED MACHINERY CORP.

14737 Firetower Rd., Conroe, TX 77306

FAB. EQUIP. • DRILLING RIG • CRANE
FORKLIFTS • MORE!

BID OPENING:

TUESDAY, APRIL 16

SEALED BID SALE

UNUSED THERMATOOL (INDUCTOTHERM)

PIPE MFG. INDUCTION HARDENING & TEMPERING LINE

WEDNESDAY, APRIL 24

10:00 A.M.

SCHILL STEEL SERVICES

3001 W. 11th, Houston, TX 77008

(5) PLASMA & OXY CUTTING SYSTEMS
FAB. EQUIP. • MACHINE TOOLS • OVERHEAD
CRANES • FORKLIFTS • MORE!

THURSDAY, APRIL 25

10:00 A.M.

CHALLENGE MACHINE & FAB.

6460 Aldine Bender Rd., Humble, TX 77396

PRECISION MACHINE SHOP & FAB. FACILITY CLOSING!

TUESDAY, APRIL 30

10:00 A.M.

Surplus to the Ongoing Operations of
**SALAMANDER ADVANCED
HEATER SOLUTIONS**

5521 Gasmer St., Houston, TX 77035
OILWELL DOWNHOLE DRILLING SUPPORT EQUIP.
TUBE WELDERS • FURNACES • ELECTRICAL SWITCH
GEAR • GENERATORS & MORE!

THURSDAY, MAY 2 • 10:00 A.M.

CHICKASHA MANUFACTURING

5501 Hwy. 81 South, Chickasha, OK 73018
CNC & MANUAL MACHINE TOOLS • FABRICATING EQUIP.

AUCTIONEER: Ron Moore, TX Lic. # 7314

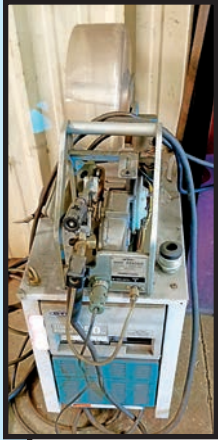
DOWNLOAD BROCHURES AT
www.pmi-auction.com

LOCATION S

HIPPO HOPPER

27807 Red Fox Road,
Tomball, Texas 77377

INSPECTION: Tuesday, March 26,
9:00 A.M. to 4:00 P.M.



OTC WELDER
AND WIRE
FEEDER

DURMA
CNC
PRESS BRAKE



2006

CNC PRESS BRAKE

DURMA MDL. AD-S 30135, new 2006, 148 T., 10' overall, 8'6" btwn. housings, Delem DA66W 4-axis CNC controls, motorized crowning (out of service).

POWER INVERTER FOR ROBOTIC WELDER

MILLER AUTO INVISION II, S/N LC088813.

WELDER & WIRE FEEDER

OTC CPDP-350 MIG, 350A w/OTC Mdl. CMH-147 wire feeder, S/N P6972YK8161006.

OTC TIG WELDING POWER SOURCE, Mdl. AVP-300, S/N P6946YKK186761001.

FLOOR MOUNTED JIB CRANE

HARRINGTON 3 T. ELECTRIC HOIST ON A 5 T. BOOM AND BASE.



HARRINGTON 3 T. FLOOR MTD. JIB CRANE

2015



TAM MODULE
HYD. BALING PRESS



CUSTOM PLASTIC AGGLOMERATION LINE



HEXAPLAST AUTO. MFI
TESTING EQUIP.

MSI CORPORATION
WASHING SYSTEM

HYSTER 9,000-LB. CAP.
FORKLIFT



LOCATION T

SUNWEST INTERNATIONAL

113 Rhodes Street, Suite D, Conroe, Texas 77303

INSPECTION: Tuesday, March 26, 9:00 A.M. to 4:00 P.M.

HYDRAULIC BALING PRESS

TAM MODULE, new 2015, 22" x 33" die, S/N 175.

DENSIFIERS

CUSTOM 42" PLASTIC AGGLOMERATION LINE, 500-lb./hr., Automated Conveyor Systems 16"W. belt type conveyor, auger, separator, discharge conveyor.

CUSTOM 28" PLASTIC AGGLOMERATION MACHINE, 150-lb./hr., made in India.

HOT AIR DRYER

PARSHVA ENTERPRISE, 70-170 deg. C. recommended resin drying temp. range.

WASHING SYSTEM

MSI CORPORATION MDL. V12-12, MSI Control Delta V System, S/N 980143.

DIGITAL SCALE

ADAM 5,000-LB. CAP. MDL. AE402, 47" x 47" tbl.

FORKLIFT

HYSTER 9,000-LB. CAP. MDL. S80XL, LP pwr., 172" max. lift, side shift, solid tires, S/N DC04V07299R.

PALLET JACK

GLOBAL INDUSTRIAL 550-LB. CAP.

MELT FLOW INDEX

HEXAPLAST AUTO. MFI TESTING EQUIP.

ONLINE BIDDING: YOU MUST REGISTER IN ADVANCE
FOR ONLINE BIDDING AT THIS AUCTION. Go to
www.pmi-auction.com and click on BidSpotter.com
on our calendar page for this auction sale.

DON'T MISS THIS SALE!

LOCATION U INNOVEX DOWNHOLE SOLUTIONS

Stored at:

ABLE MACHINERY MOVERS

10835 Bammel North Houston,
Houston, Texas 77086

INSPECTION:

Tuesday, March 26, 9:00 a.m. to 4:00 p.m

CNC LATHE

DAEWOO PUMA 250, early 2000's, (\$250 loading charge).

CNC VERTICAL MACHINING CENTER

DOOSAN DMV4020, early 2000's, (\$250 loading charge).

ENGINE LATHE

JET 22" X 60", new 2014, 440V, (\$150 loading charge).

KINGSTON 24" X 120", parts machine, (\$150 loading charge).

VERTICAL TURRET MILL

9" X 49" SHARP, variable speed head, (\$150 loading charge).

RADIAL DRILL

MORRIS 3' X 9", 208 v., (\$150 loading charge).

BLAST CABINET

EMPIRE CABINET AND HOPPER,
(\$100 loading charge).

AIR FILTRATION UNIT

WATER CURTAIN AIR FILTRATION
UNIT.



DAEWOO PUMA 250 CNC LATHE



DOOSAN DMV4020 CNC VERT. MACHINING CENTER



EMPIRE BLAST CABINET



JET 22" X 60" ENGINE LATHE



KINGSTON 24" X 120" ENGINE LATHE



EMPIRE HOPPER



MORRIS
3' X 9"
RADIAL
ARM DRILL



SHARP MILL



JET DRILL PRESS

ONLINE BIDDING:
YOU MUST REGISTER
IN ADVANCE FOR
ONLINE BIDDING
AT THIS AUCTION.

Go to

www.pmi-auction.com
and click on

BidSpotter.com

on our calendar page
for this auction sale.



ONLINE TIMED AUCTION

TERMS & CONDITIONS OF ON-LINE AUCTION SALE

ALL BIDS ARE MADE AND RECEIVED UNDER THE TERMS HEREINAFTER SET FORTH TO WHICH TERMS BIDDERS AGREE BY MAKING THEIR BID AT THE SALE. THESE TERMS CANNOT BE ALTERED EXCEPT BY THE AUCTIONEER. NO EMPLOYEE HAS AUTHORITY TO MODIFY SAME. THE OWNER AND/OR AUCTIONEER RESERVE THE RIGHT TO ADD TO OR MODIFY THE TERMS OF THE SALES.

An 18% Buyer's Premium will apply.

This auction may require a credit or debit card 100% refundable deposit. Your credit/debit card added through the Bidspotter.com fully secure and PCI compliant registration process will be assessed a 100% refundable \$3000 (US Bidder) or a \$10,000 (Foreign Bidder) deposit in order to be approved to bid online within this auction. If you are unsuccessful in the auction, your card will be refunded of your deposit within 24 hours post auction.

Plant & Machinery, Inc. **DOES NOT** take credit cards for auction invoice payments. All payments must be made by Cash, Cashier's Check, Wire Transfer or Company Check with Bank Letter of Guarantee to Plant & Machinery, Inc. (PMI). Here is an example of what your letter should be: [Mr. "Customer Name" representing "Company Name" is a customer of this bank. This bank will guarantee unqualified payment to Plant & Machinery, Inc. on the account listed herein up to the amount of \$ _____. This letter is good until April 29, 2019.

By registering, the Bidder hereby expressly authorizes PMI to charge the Credit Card if the Bidder fails to pay any invoice within forty eight (48) hours after each invoice is issued to Bidder.

All bidders are required to give full name, company name, address, phone, fax, email address, and bank information when registering. All bidders must register before bidding.

All bids must be paid in full within two business days after the bids have closed. The Auctioneer shall determine the bidding increments. Some items may be auctioned with reserve.

All purchases must be removed within two weeks after the bids have closed or within the timeframe posted on the sale web page. No lot can, on any account, be removed prior to PMI having been paid in full. Removal shall be at the expense, risk and liability of the Purchaser. Purchases will be delivered only on presentation of paid bill. Auctioneer shall not be responsible for goods not removed within the aforesaid time.

Riggers, movers, electricians or buyer performing work at the Auction Sites must provide Auctioneer with evidence of insurance. The insurance coverage must be at a level acceptable to Auctioneer and to the Seller.

PARTIAL TERMS & CONDITIONS

All checks for deposits and balances due shall be payable to the order of PLANT & MACHINERY, INC. unless instructed otherwise. All bills must be paid to the Houston headquarters offices of the Auctioneer at 1304 Langham Creek Drive, Suite 454, Houston, TX, 77084 or by wire transfer directly to the bank specified in the wire transfer instructions provided for this on-line auction. The full purchase price on all lots sold to the same buyer must be paid within the time fixed and before removal of any of the goods.

THE AUCTIONEER SHALL NOT BE RESPONSIBLE FOR THE CORRECT DESCRIPTION, GENUINENESS, AUTHENTICITY OF, OR DEFECT IN ANY LOT, AND MAKES NO WARRANTY IN CONNECTION THEREWITH. NO SALE SHALL BE SET ASIDE NOR ALLOWANCE MADE ON ACCOUNT OF ANY INCORRECTNESS, ERROR IN CATALOGING, OR ANY IMPERFECTION NOT NOTED. NO DEDUCTION ALLOWED ON DAMAGED ARTICLES. ALL ARTICLES BEING EXPOSED FOR PUBLIC EXHIBITION, AND SOLD "AS IS" AND WITHOUT RECOURSE. ARTICLES ARE NOT WARRANTED AS MERCHANTABLE OR FIT FOR ANY PARTICULAR PURPOSE, AND NO CLAIM MAY BE MADE BY PURCHASER RELATING TO THE CONDITION OR USE OF ARTICLES PURCHASED, OR FOR PROXIMATE OR CONSEQUENTIAL DAMAGES ARISING THEREFROM.

Articles purchased may not incorporate approved activating mechanisms, operating safety devices or safety guards, as required by OSHA or otherwise. It is Purchaser's responsibility that articles purchased be so equipped and safeguarded to meet OSHA and any other requirements before placing such articles into operation.

Purchaser agrees to indemnify and hold Auctioneer harmless from and against all claims and liabilities relating to the condition or use of the articles purchased or failure of user to follow instructions, warnings or recommendations of the manufacturer, or to comply with federal, state and local laws applicable to such articles, including OSHA requirements, or for proximate or consequential damages, costs or legal expenses arising therefrom.

No claims will be allowed after removal of goods from premises.

Auctioneer shall not, in any event, be liable for non-delivery or any other matter or thing, to any Purchaser of any lot other than for the return to the Purchaser of the deposit or sum paid on said lot, should the Purchaser be entitled thereto.

In default of payment of bills in full within the time therein specified, the Auctioneer in addition to all other remedies allowed by law, may retain all monies received as deposit or otherwise, as liquidated damages. Lots not paid for and removed within the time allowed herein may be resold at public or private sale without further notice,

and any deficiency, together with all expenses and charges of re-sale, will be charged to the defaulting Purchaser.

Persons attending during exhibition, sale or removal of goods assume all risks of damage of or loss to person and property and specifically release the Auctioneer from liability therefor. Neither the Auctioneer nor his principal shall be liable by reason of defect in or condition of the premises on which the sale is held.

The Auctioneer reserves the right to withdraw from sale any of the property listed or to sell at this sale property not listed, and also reserves the right to group one or more lots into one or more selling lots or to subdivide into two or more selling lots. Whenever the best interest of a Seller will be served, the Auctioneer reserves the right to sell all the property listed, in bulk.

Where items are sold by estimated weight, count or measure, the Purchaser will be billed for and required to pay for the estimated weight, count or measure. If, upon delivery, any shortage exists, the Purchaser will receive a refund at the rate of purchase. If there be an excess, the Purchaser will be required to pay for such excess, at the rate of purchase.

The Auctioneer reserves the right to reject any and all bids, alter the order of sale, and accept bids made on behalf of the Seller.

The record of sale kept by the Auctioneer will be taken as final in the event of any dispute.

The Auctioneer is acting as agent only and is not responsible for the acts of its principals. Purchaser or its representative will independently inspect the goods bid upon by the Purchaser, and acknowledge to the Seller that Purchaser is acquiring all goods "AS IS, WITH ALL FAULTS" and "WITH REMOVAL AT PURCHASERS' RISK AND EXPENSE" and agrees to protect, indemnify and hold harmless the Seller from any and all claims, demands, causes of actions, liabilities and judgments relating to the conditions or use of the goods.

Seller, if not the same as the Auctioneer, shall have the rights, protections and benefits afforded to the Auctioneer as set forth herein.

Although all information has been obtained from sources deemed reliable, the auctioneer and seller make no warranty or guarantee, expressed or implied, as to the accuracy of the information herein contained, or contained in our catalog. It is for this reason that buyers should avail themselves of the opportunity to make inspection prior to the auction. Although it is not likely, auction sales are subject to cancellation or postponement. Kindly contact auctioneer prior to attendance.

ANY ADDITIONAL PROVISIONS OR AMENDMENTS TO THE ABOVE LISTED TERMS WILL BE POSTED TO THE ON-LINE SALE WEB PAGE BY THE AUCTIONEER PRIOR TO THE START OF BIDDING.

(12) UPCOMING AUCTIONS & SALES

TUESDAY, APRIL 2 • 10:00 A.M.
APPLIED MACHINERY CORP.
6545 North Eldridge, Houston, TX 77041
CNC MACHINE TOOLS • FAB EQUIP.
FORKLIFTS • OILFIELD EQUIP.

WEDNESDAY, APRIL 3
10:00 A.M.
APPLIED MACHINERY CORP.
7605 Wright Rd., Houston, TX 77041
CNC & MANUAL FAB. EQUIP. • WELDERS
CRANES • FORKLIFTS

THURSDAY, APRIL 4
10:00 A.M.
APPLIED MACHINERY CORP.
14737 Firetower Rd., Conroe, TX 77306
FAB. EQUIP. • DRILLING RIG • CRANE
FORKLIFTS • MORE!

BID OPENING:
TUESDAY, APRIL 16
SEALED BID SALE
UNUSED THERMATOOL (INDUCTOTHERM)
PIPE MFG. INDUCTION HARDENING & TEMPERING LINE

AUCTIONEER: Ron Moore, TX Lic. # 7314

DOWNLOAD BROCHURES AT
www.pmi-auction.com

WEDNESDAY, APRIL 24
10:00 A.M.
SCHILL STEEL SERVICES
3001 W. 11th, Houston, TX 77008
(5) PLASMA & OXY CUTTING SYSTEMS
FAB. EQUIP. • MACHINE TOOLS • OVERHEAD
CRANES • FORKLIFTS • MORE!

THURSDAY, APRIL 25
10:00 A.M.
CHALLENGE MACHINE & FAB.
6460 Aldine Bender Rd., Humble, TX 77396
PRECISION MACHINE SHOP & FAB. FACILITY CLOSING!

TUESDAY, APRIL 30
10:00 A.M.
Surplus to the Ongoing Operations of
SALAMANDER ADVANCED
HEATER SOLUTIONS
5521 Gasmer St., Houston, TX 77035
OILWELL DOWNHOLE DRILLING SUPPORT EQUIP.
TUBE WELDERS & FURNACES • ELECTRICAL SWITCH
GEAR • GENERATORS & MORE!

THURSDAY, MAY 2 • 10:00 A.M.
CHICKASHA MANUFACTURING
5501 Hwy. 81 South, Chickasha, OK 73018
CNC & MANUAL MACHINE TOOLS • FABRICATING EQUIP.

TUESDAY, MAY 7 • 10:00 A.M.
VAAN GASKETS, INC.
3541 Bacor Rd., Houston, TX 77084

THURSDAY, MAY 16
10:00 A.M.
CHAPARRAL
MANUFACTURING CO.
311 Hwy. 69 South, Trenton, TX 75490
PRECISION CNC MACHINE SHOP CLOSING!

TUESDAY, MAY 21
10:00 A.M.
VICTORIA CABINETWORKS, INC.
2002 Delmar Dr., Victoria, TX 77901

THURSDAY, MAY 30
10:00 A.M.
ECONOMY IRON WORKS, INC.
635 South Peters St.,
New Orleans, LA 70130

AVAILABLE FOR SALE
BY PRIVATE TREATY
Surplus to the Needs of Inland Marine
Equipment, Jeffersonville, Indiana