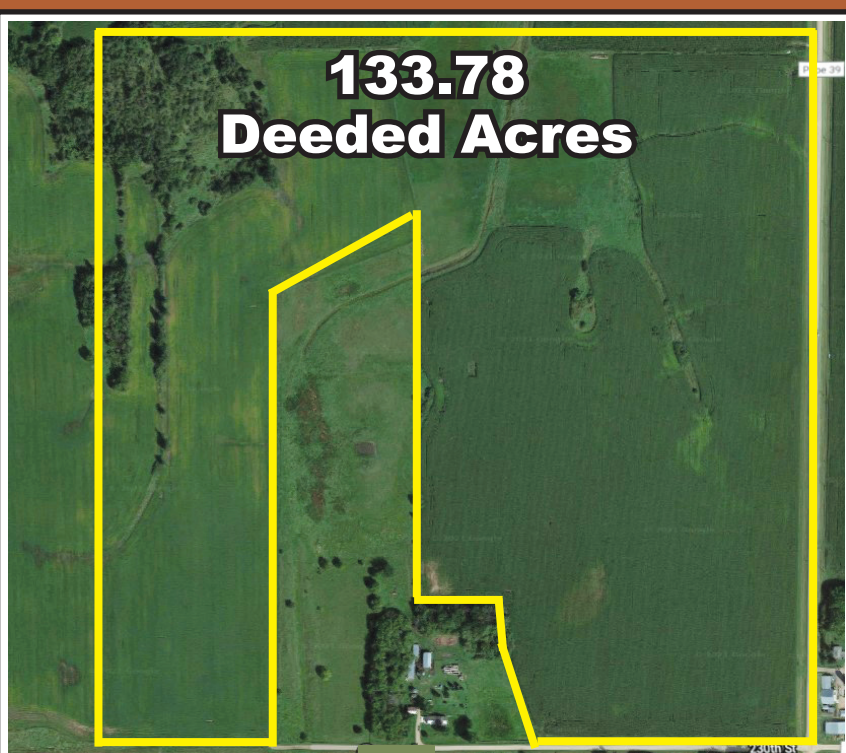


EINER JENSEN ESTATE POPE COUNTY MULTI-USE LAND AUCTION

**Online
Only**

7 PARCELS
697 +/- TOTAL ACRES
OCT. 15 THRU OCT. 27 • 2021

*Lots start
closing 11 a.m.*



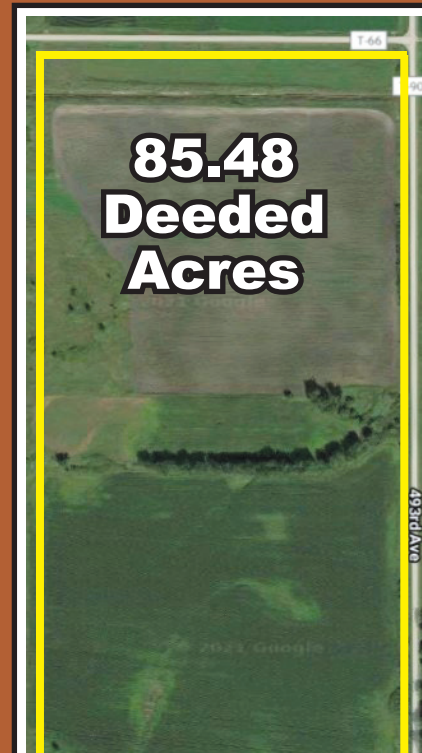
**133.78
Deeded Acres**

• PARCEL 1 •
POPE COUNTY, BANGOR TWP.
SEC 2 SE 1/4, PARCEL ID 11-0008-002
119.05 +/- TILLABLE ACRES, 80.6 CPI



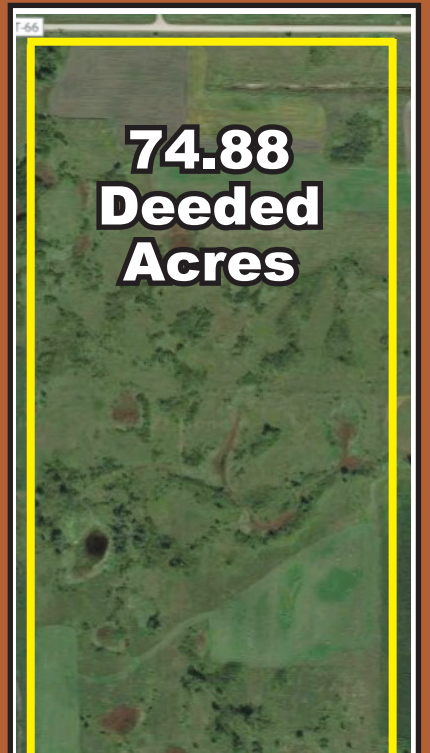
**160
Deeded Acres**

• PARCEL 2 •
POPE COUNTY, BANGOR TWP
SEC 2 SW 1/4 PARCEL ID 11-0008-001
92.66 +/- TILLABLE ACRES
76 CPI 42.7 CRP ACRES



**85.48
Deeded
Acres**

• PARCEL 3 •
POPE COUNTY,
BANGOR TWP
SEC 12
EAST HALF NE 1/4
PARCEL ID
COMING SOON
65.49 +/- TILLABLE
ACRES 90.9 CPI



**74.88
Deeded
Acres**

• PARCEL 4 •
POPE COUNTY,
BANGOR TWP.
SEC 12
WEST HALF NE 1/4
PARCEL ID
COMING SOON
22.43 +/- TILLABLE
ACRES 89.5 CPI



**79.76
Deeded
Acres**

• PARCEL 5 •
POPE COUNTY,
BANGOR TWP.
SEC 13 WEST HALF
OF NE 1/4 PARCEL
ID 11-0053-000
59.5 +/- TILLABLE
ACRES 89.8 CPI



**44
Deeded Acres**

• PARCEL 6 •
POPE COUNTY, BANGOR TWP, SEC 13
PARCEL ID AND LEGAL DESCRIPTION COMING SOON
43 +/- TILLABLE ACRES 86 CPI

• CLOSING ON OR BEFORE DEC. 16, 2021 •

Auctioneer Notes: Don't miss out on this great opportunity to own one or all seven of these great parcels of land in Bangor Township in Pope County. This land has some of the highest CPI Ratings in the area! They also have some of the best habitat for almost any species to hunt especially deer and pheasants. Give our office a call or visit our website to download a full prospectus packet for these great multi use properties.



**120
Deeded
Acres**

• PARCEL 7 •
POPE COUNTY,
BANGOR TWP.
SEC 24 N1/2NE1/4;
SE1/4 NE1/4
PARCEL ID
11-0111-000
14.64 +/- TILLABLE
ACRES 22.6 CPI

TERMS & CONDITIONS:

10% down day of auction.
Successful bidder will be required to sign purchase agreement at close of auction.
Buying property As Is-Where Is.
Buyer will receive clear and marketable title.
Buyers Premium will apply to final bid.

www.zielsdorfauctions.com

320-843-3003

Aaron Olson, Owner/Auctioneer/Realtor
MN 76-29, 320-808-8947

Robert Zielsdorf, Broker, MN 76-22, 320-760-2006
Brad Feuchtenberger, Auctioneer, MN 75-14, 320-287-0501

Janel Tolifson, Realtor 320-760-7576

Brandon Goff, Social Media/Sales, 320-808-3191

Matt Ludwig, Realtor/Sales 320-493-4848

Jami Knoblauch/Sales 320-424-0557



**AUCTION &
REAL ESTATE
SERVICES**

ZIELSDORF
320-843-3003



AUCTIONEERS & CLERK
Zielsdorf Auction & Real Estate Service
119 3rd St N – Benson, MN 56215
Office: 320-843-3003

*Your Farm Equipment &
Real Estate Specialists*