

KEN CARPENTER AUCTION, LLC.

14800 SW 104TH STREET
MUSTANG, OKLAHOMA 73064

CALL KEN CARPENTER
AT (405) 620-1524

WWW.KENCARPENTERAUCTION.COM
SALES@KENCARPENTERAUCTION.COM

Land Auction

Saturday, June 24th, 2017 @ 10:00am
ON THE FARM

DIRECTIONS:

From Tuttle or Amber, go South on Hwy 92 to County Road E 1300, go East on 1300 2 miles to property on North side. Follow the signs.

From Chickasha, head East on Hwy 62 to 92, then go North on Hwy 92 6 miles to E 1300 / County Road 1300, then East 2 miles to property on North.

ADDRESS: 1538 County Road 1300, Amber OK

SELLER: Gregory & Shelly Crowley

The Crowleys are moving to Kansas. Selling 143 acres M/L.

*Actual Acres will be announced sale day due to 15 acres of 158.6 being surveyed out for existing house and barns. Hard surface frontage road.

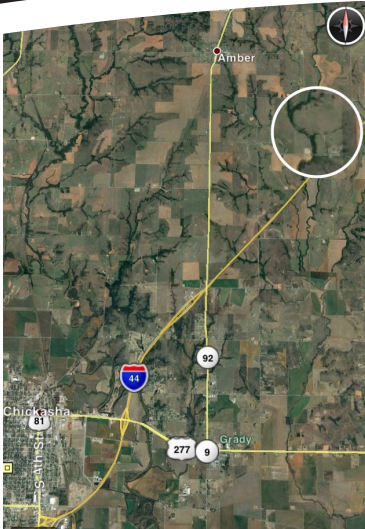


VISIT US AT WWW.KENCARPENTERAUCTION.COM FOR MORE UPCOMING AUCTION DATES

143 acres M/L of Grady County Grass. 5 minutes to HE Bailey Turnpike. Taking you to OKC or Lawton, 10 minutes from Chickasha or Tuttle. 30 minutes to OKC or Norman.

If you are looking for a country lifestyle, this is your opportunity. Build your dream home, run cattle and fish in your own pond. Beautiful place to raise a family. Amber-Pocasset Schools.

Electric provider: OEC



LEGAL:

T 8N R 6W 28-08N-06W-3-001-00

35.131656 N

-97.842139 W

TERMS: 10% down day of auction paid to Washita Valley Abstract. Close in 30 days. Buyer needs to have financing in place by sale day. Anyone unknown to Auction Company must bring letter of credit. Seller can refuse any or all offers. Selling "As Is" condition. Any and all announcements made on sale day supersede any and all advertising.

LAND AUCTION: Surface rights only, no minerals.



**KEN CARPENTER
AUCTION, LLC.**



**FOR MORE INFO, CALL TAMI UTSLER AT (405) 406-5235
OR KEN CARPENTER AT (405) 620-1524.**