

# AUCTION

## DIRECTIONS:

South of Turtle on  
Cimarron Rd to  
Sandrock Rd. one mile  
west to property on  
North Side.

## OPEN HOUSE

SUNDAY October 13 2 - 4

Saturday  
October 19, 2019  
9:00am On-side

1277 County Street 2900  
Turtle, Oklahoma 73089

Linda Clark Seller

## 135 ACRES M/L OFFERED IN 12 TRACTS

**TRACT 1** - Brick Home on 9.18 acre 2351 sq. ft. home with enclosed back porch and 2 car garage 3 bedrooms, 2 bath built in 200 one owner. 33 x 32 insulated metal shop with 2 overhead doors and over hang, She shed, lots of tress, rural water and Turtle school. Very nice Home.

**TRACT 2** - 7.31 acres 2900 frontage

**TRACT 3** - 7.08 acres 2900 frontage

**TRACT 4** - 8.61 acres just south of home joins creek

**TRACT 5** - 6.67 acres with frontage on Sandrock Rd.

**TRACT 6** - 5.27 acres with frontage on Sandrock Rd.

**TRACT 7** - 8.04 acres with frontage on Sandrock Rd. lots of trees

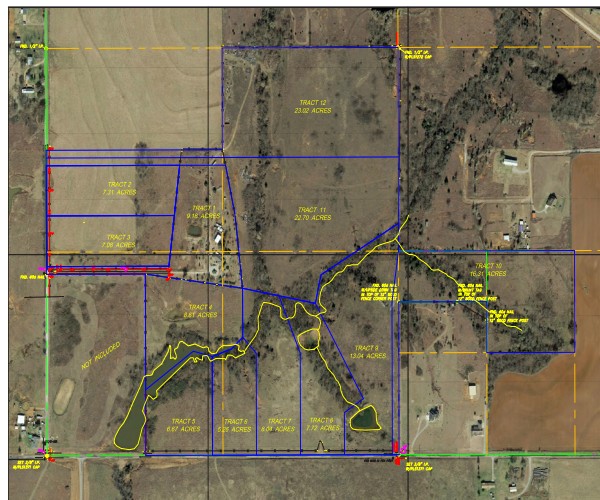
**TRACT 8** - 7.72 acres with frontage on Sandrock Rd. lots of trees

**TRACT 9** - 13.0 acres with frontage on Sandrock Rd trees and pond

**TRACT 10** - 16.31 acres access on Sandrock Rd. lots of trees

**TRACT 11** - 22.70 acres access on 2900 trees, creek and pasture

**TRACT 12** - 23.02 acres access on 2900 trees, creek and pasture



**Ken  
Carpenter**  
Auction & Realty LLC



Ken Carpenter at 405.620.1524



[www.kencarpenterauction.com](http://www.kencarpenterauction.com)



[sales@kencarpenterauction.com](mailto:sales@kencarpenterauction.com)



136 W. HWY 152 Mustang, OK 73064

# Ken Carpenter

## Auction & Realty LLC

136 W. HWY 152  
MUSTANG, OK 73064

**CALL KEN CARPENTER  
AT (405) 620-1524**

WWW.KENCARPENTERAUCTION.COM  
SALES@KENCARPENTERAUCTION.COM

## Saturday October 19, 2019 at 9:00 AM ON-SITE

### TRACTORS AND SHOP EQUIPMENT

International Tractor Diesel 3pt pto  
Hustler Zero-Turn 42' Deck 24 hours  
Coats Tire Changer  
Craftsman Trimmer  
Floor jacks  
Air-Compressor  
Yamaha 4-Wheeler Parts  
Sprayer's  
Craftsman Radial Arm Saw  
55 Ton Press  
Rolling Tool Box's  
Electric Welder  
500 Watt gas Generator  
Port-A-Cool Cooler  
Troy-Built Rear Tine Tiller  
Shelung  
Lots of Tools  
2-Truck beds for Storage  
Super M-TA Propane Tractor  
3pt New-Holland Hay Rake  
3pt Gopher Machine  
Woods 6' brushog  
Cement Mixer  
3pt Boom  
Antique Mower spreader  
3pt 3 bottom plow  
3pt sickle mower



Pull Type Dirt Carry-All  
3pt Spray Tooth  
3pt  
Post Hole Digger  
Hydraulic Post Hole Digger  
Corn Sheller  
Pickup Bed Trailer  
16" Hoe-bed Trailer  
2-Over Head Fuel Tanks  
**LOT OF MISCELLANEOUS**



### HOUSEHOLD

Samsung 2 door Refrigerator  
Bar Stools  
Leather Recliner  
Leather Couch, Love seat Chair  
Curio Cabinet  
Wooden Desk  
Book shelf  
High Back Chair  
King Size Spruce Bedroom Suite  
Chest Freezer  
Blue Glassware  
GE Washer  
Maytag Propane dryer  
Glassware  
Lots of Outdoor Figurines  
Church pew  
Kingsford Smoker  
Patio furniture  
Water Fountain  
Lots of Outdoor Ornaments  
Milk Cans  
Gazebo

**LOTS OF MISCELLANEOUS HOUSEHOLD**

Real Estate Terms: 10% down day of sale. Balance due upon delivery of marketable title.

All information has been taken from sources believed reliable. Buyers should satisfy themselves as to any inspections prior to bidding. Seller can reject any or all bids. Financing must be in place prior to bidding.

Any announcement day of sale supersedes all verbal and print advertising.

**KEN CARPENTER AUCTION & REALTY, LLC**  
YOUR REAL ESTATE & PERSONAL PROPERTY AUCTION SPECIALIST  
"LET US TURN YOUR ASSETS INTO CASH!"

Call Ken Carpenter  
**405-620-1524**  
www.kencarpenterauction.com  
Broker Ken Carpenter