

PICKUP, TRACTORS, 5TH WHEEL CAMPER, FARM EQUIPMENT, VERY LARGE ASSORTMENT OF  
SHOP TOOLS, MECHANICS TOOLS AND EQUIPMENT

# SIMULCAST & LIVE AUCTION

The Simulcast Auction Will Promptly Begin at 12:30 P.M.

SATURDAY, NOVEMBER 9, 2019: 11:00 A.M.

ADDRESS: 377 550th STREET, MARCUS, IA

**DIRECTIONS:** From the Marcus Junction at Marcus, IA go 6 miles South on L-36, then ¼ mile West ¼ on 550th Street

## SIMULCAST AUCTION

2011 Ford F250 XLT Super Duty ¾ ton pickup, 8 cyl. extended cab, 66,138 miles, cloth bucket seats w/center console, auto windows & locks, am/fm radio, CD player, air, heat, 4 wheel drive 7' bed gas, automatic, 121/118 tires, VIN# 1FT7X2B61BEA36390 (Real nice)

1981 John Deere 4640 tractor, D, WF, 8 sp. PS trans, 9228 hours 20.8–38" rear tires w/hub mounted duals & rear inside weight package, 11.00-16SL fronts, 10 front suitcase weights, 1,000 PTO, 3 pt. w/category hitch, 2 remotes, Serial #022310RW

1976 International 1086 tractor, D, WF, International cab w/air & heat, 18.4-R38" rears, 10.00-16 fronts, 7865 hours, 3 pt., 2 remotes, Serial# U013102

(Selling the tractor first, & loader separately)

Westendorf WL 42" loader w/quick attach 84" newer bucket, newer cylinders, (Nice loader, buyer is responsible for removing the loader from the tractor if sold separately)

1988 Prowler Lynx by Fleetwood 25' 5th wheel camper, tandem axle 94" wide (outside dimension), canopy, sink, refrigerator, Magic Chef propane stove & oven, sleeps 6, heat & air Kay 1000 gal. diesel fuel tank w/Fill-Rite, Model # FR610, electric fuel pump, 15 GPM (Like new)

White #271 hyd. folding 21' disc,, 9" spacings, tandem axle on main frame w/single on wings, scrapers

International #490 hyd. fold 20' disc, 9" spacings, tandem axle on main frame & single on wings

International #800 Cyclo Air planter, 3 pt. 8 row, 36",

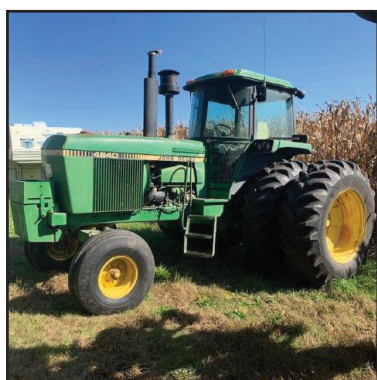
Yetter trash whippers, hyd. pump, bean & corn drums

Summers drag: 2 - 5' & 2 - 4' 3 bar coil tine drag sections

Porter Cable 60-gallon oil lubricated cast iron cylinder upright air compressor (Like new)

3 - Acetylene torch sets

Power Glide 3 pc. stacking, locking tool boxes on casters, 20 drawers, (Nice)



## LIVE AUCTION (11:00 A.M.)

### Farm Machinery Equipment, Lawn Mowers, Large Assortment of

### Shop Tools & Mechanics Equipment

IH #4500 24' field cultivator w/3 bar coil tine drag

John Deere #1450 semi mounted steerable 4 bottom plow

Pull type PTO drive single blade mower

International Cyclo 500 planter, 6 row 30", 3 pt., corn & bean drums

Dixon ZTR riding lawn mower w/Kohler Command 16 HP motor (Works good)

Dixon ZTR 426 w/12.5 HP motor

DeWalt portable 20 gal. air compressor (Nice)

Makita LS1030N 10" diameter swivel saw

Power Mate welder complete w/accessories

Lincoln AC 225-amp Arc welder

Master Force variable sp. 12" bench drill press (Like New)

2 Wheel scooter w/Briggs & Stratton 3 HP motor (Motor is free)

Dremel Titanium Nitride high speed steel drill bit set (29 pc.)

**Pro-Grade:** 16 Pc. SAE socket set (1/2" – 1 ¼"), 13 Pc. ¼" drive SAE socket set & 3/8" Drive SAE socket set

**DeWalt:** DW317VS orbital jig saw w/1" stroke (New),

DWE315 oscillating multi tool (New),

DW28402 4 ½" Angle grinder, DW26441 ¼" sheet palm

sander, Soldering gun, Roto hammer, 12" Chop saw, DWE305

reciprocating saw with 1 1/8" stroke (Like new), DWD115

VSR electric drill in case & 16" Scroll saw

**Sears:** 1" Air impact wrench (Nice), 10" Table saw, 10 Drawer tool cabinet, HD 1 HP router Model 315.17461, Commercial grinder, Microtork, SAE & mm various sizes of wrenches

2 Ton hyd. floor jack

Cobalt 3/8" dr. 11 pc. 6 pt. mm socket set

Various sizes, shallow & deep well sockets

OTC truck airbrake stake adjuster puller

Metric crows feet, Various Torx sets

Pro-Grade Model #11 850 torque wrench

True Craft 6 V battery tester, Clark 6" bench grinder

Schauer 10 amp battery charger

Delta 16" scroll saw, Cobalt speed bit set

Milwaukee Magnum HD ½" electric drill (New)

Makita 100 mm disc grinder

2 12 Gallon shop vacs, Shop Craft bench style drill press

Schumacher 10/30 amp battery charger

Large & small anvils, Large safe on wheels

Handyman jack, Skil side grinder

Milwaukee M18 Red Lithium ½" drive cordless impact wrench

(Complete & like new)

Enderes, Inc. & Sears #5499 tap & die sets in wooden boxes

Makita cut off saw, Hydraulic bottle jacks

Dayton Tradesman Model 2Z901 variable speed

reciprocating saw

Porter Cable air drill & PT751 ¾" air impact wrench

Ingersoll Rand Model A ½" impact wrench

Mechanics H/D air hammer, 3/8" Planetary Gear air drill

Lincoln cordless grease gun, Viper front tine gas tiller

Jorgensen bench vice

Wooden stepladders, Werner 8' fiberglass stepladder & 6"

Aluminum stepladder

2 Wheel trailer w/wooden box

Scaffolding, Lots of copper. Steel posts

Large assortment of wrenches & hand tools

Hydraulic & engine oil, Tire changing tools

Come Alongs, Portable air tanks, Large ratchet straps

Animal traps, Numerous brand-new hydraulic hoses

Pittsburgh 48" pipe wrench, 48", ¾" breaker bar

Pyramid regulated power supply

(Ham radio operating equipment)

Dayton Tradesman ¾" hammer drill

¾" Drive SAE deep well impact sockets

1" Drive socket set w/Sears ratchet and extension

Extension cords, ½" Air hose, Sledgehammers

Rakes, Potato fork, 200' tape

Shovels, Axe, Propane bottle tanks Shovels Filter wrenches

7' Tall wooden cabinet, Rubber mallets, Ball peen hammers

Pinchers, Pipe wrenches, Vice grips, Crescent wrenches

Welding clamps, Screwdrivers, Electrical connectors & tools

Bolt cutter, Jumper cables, Hacksaw, Wheel pullers

Hollow punch set, Steel brushes, Levels, Squares, Drill bits

Shop brooms, Tree pruners, Grease guns

Flaring tools, Car ramps, Stainless-steel milking cans

Galvanized tubs, Floor creeper, Misc. lumber

Large box of cement working tools, Pipe threader

Nut drivers, wire cutters

Hex key sets, Files, Punches, Snap rings pliers

Smoke Pro smoker

Fishing rods & reels, Numerous tackle boxes full of tackle

**AUCTIONEER'S NOTE:** We are very honored and privileged to be handling the above mentioned auction for the Joe Nelson Estate. For those of you that do not know, Joe was a very handy person & was able to do a lot of maintenance and repair on his own as you can tell by the amount of tools & equipment that the family is selling. **We will be having an Open House on the Simulcast & Live Auction items on Sunday, November 3, from 10:00 A.M. – 1:00 P.M.** If you have any questions in regard to the merchandise or the process used in our Simulcast auction, please do not hesitate to contact Jim Klein or one of the other auctioneers with Iowa Auction Group. In order to view more pictures and to bid on the Simulcast items, please go to the website: [iowaauctiongroup.com](http://iowaauctiongroup.com). **Terms:** Cash, Good check or credit/debit card (3.5% convenience fee). Must have Driver's license to obtain bidding number. Nothing to be removed until settled for. Not responsible for accident or theft. No warranties or guarantees are expressed or implied. **Clerk:** Klein Clerking. Bidding number system used.

## JOE NELSON ESTATE – OWNER

John Nelson 712-540-4770 • Samantha Adams 712-369-3053



171 South Washington Street  
Remsen, Iowa 51050  
[www.kleinrealestate-auction.com](http://www.kleinrealestate-auction.com)

OFFICE: 712-786-2870  
CELL: 712-540-1206  
[jklein@midlands.net](mailto:jklein@midlands.net)

SEE OUR WEBSITE FOR PICTURES

[www.iowaauctiongroup.com](http://www.iowaauctiongroup.com)

Auctioneer:  
Jim Klein

Affiliated with



Iowa Auction Group

Jim Klein, Klein Realty & Auction, Remsen, IA: 712/540-1206  
Denny O'Bryan, O'Bryan Auction, Cherokee, IA: 712/261-1316  
Del Beyer, Beyer Auction & Realty, Sioux Center, IA: 712/348-2738  
Kevin Cone, Cone Auctions, Storm Lake, IA: 712/299-4258  
Jack Seuntjens, Midwestern Land & Auction, Mapleton, IA: 712/880-1234