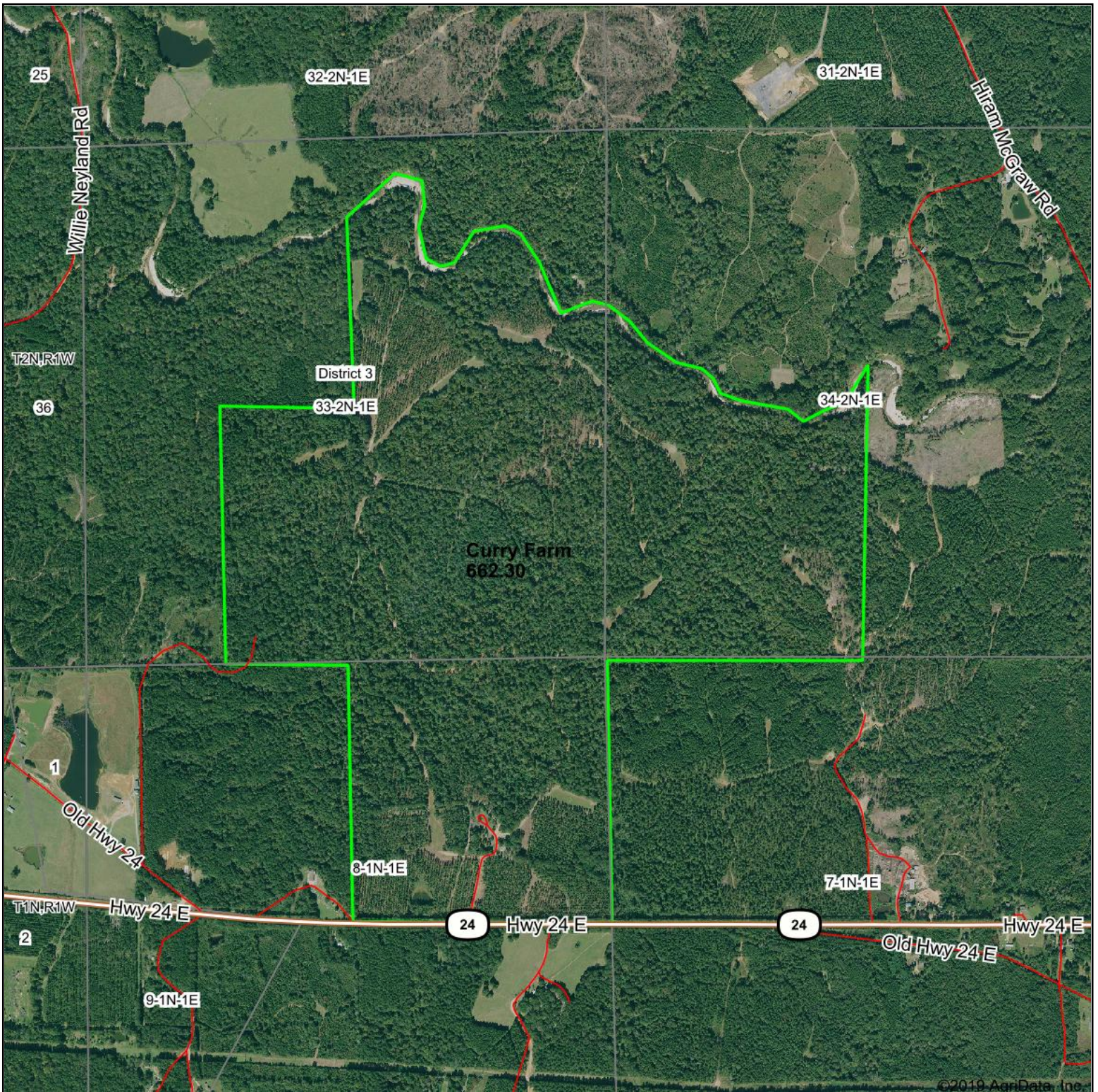


Aerial Map



Bonnette Auctions
Louisiana Outdoor Properties
Auction & Real Estate Group

Maps Provided By:



© AgriData, Inc. 2019 www.AgriDataInc.com

Map Center: 31° 5' 22.19, -91° 8' 39.49

33-2N-1E
Wilkinson County
Mississippi

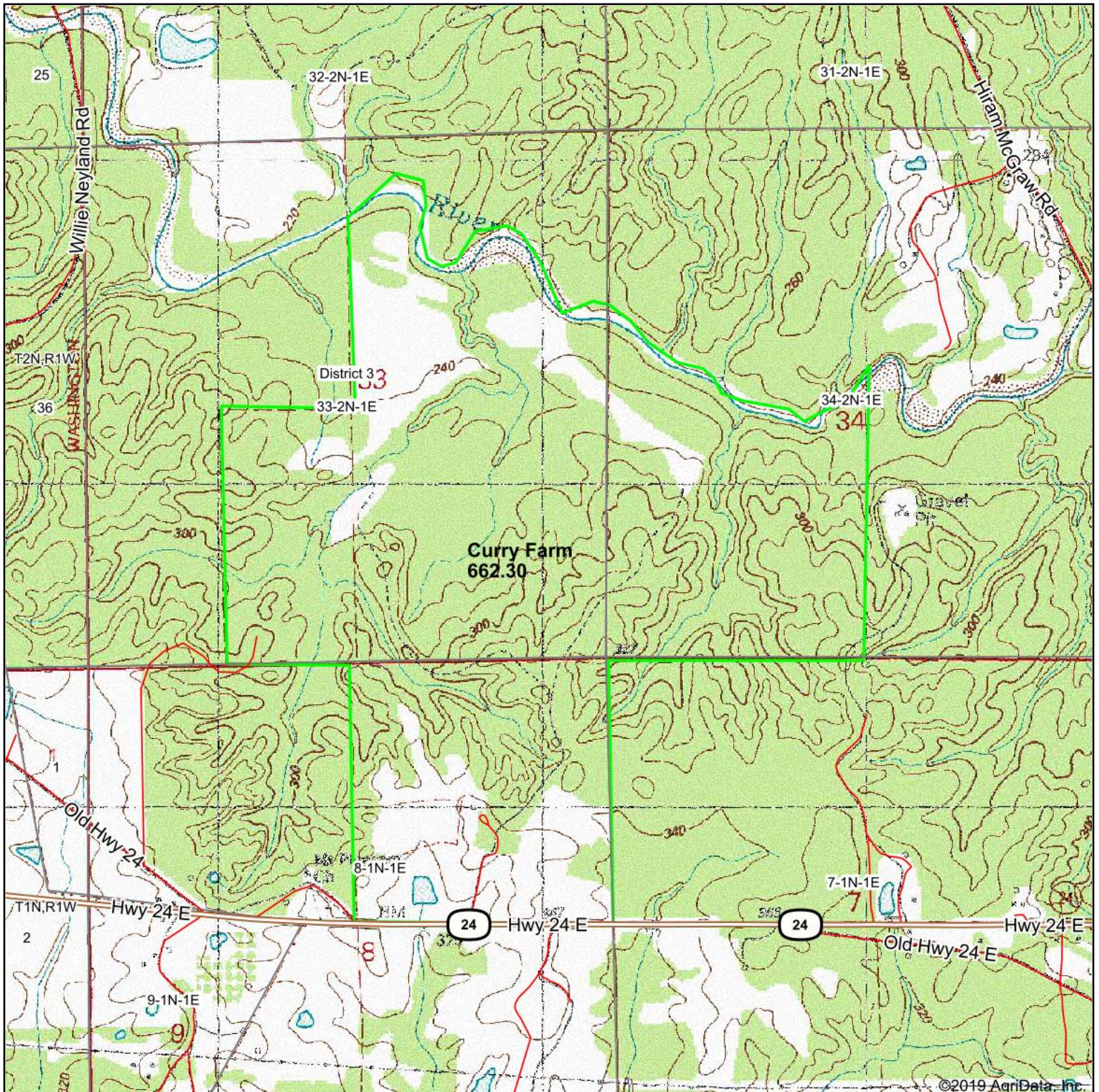
0ft 1578ft 3156ft



Boundary Lines Are Estimates. Map For Illustration Only.

5/15/2019

Topography Map



map center: 31° 5' 22.19, -91° 8' 39.49

0ft 1578ft 3156ft

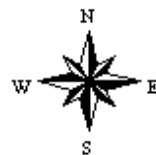
LOP
Bonnelle Auctions
Louisiana Outdoor Properties
Auction & Real Estate Group

Maps Provided By:

surety
CUSTOMIZED ONLINE MAPPING

© AgriData, Inc. 2019 www.AgriDataInc.com

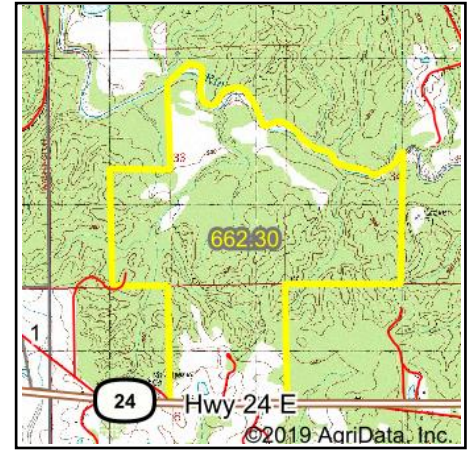
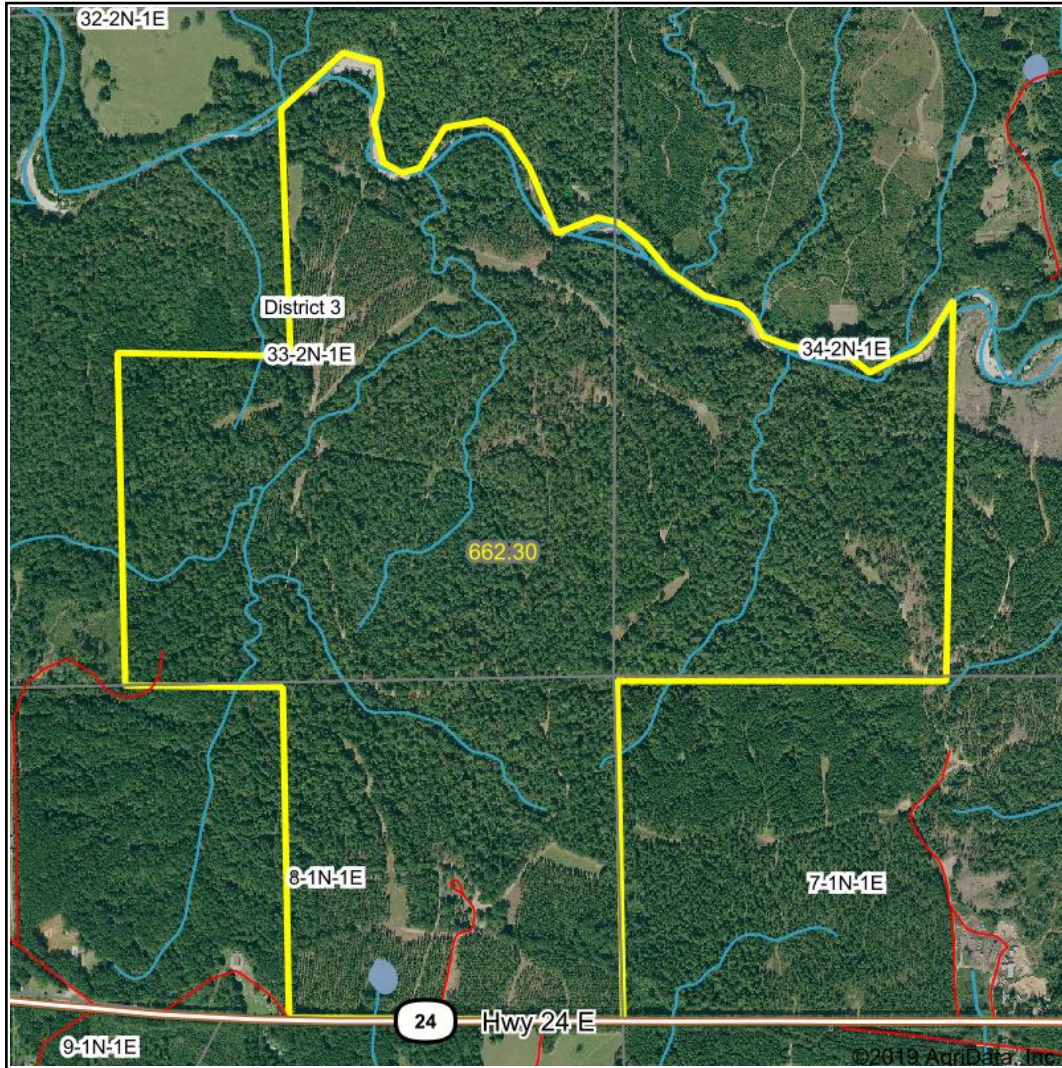
33-2N-1E
Wilkinson County
Mississippi



Boundary Lines Are Estimates. Map For Illustration Only.

5/15/2019

Wetlands Map



State: **Mississippi**
 Location: **33-2N-1E**
 County: **Wilkinson**
 Township: **District 3**
 Date: **5/15/2019**

LOP
 Bonnette Auctions
 Louisiana Outdoor Properties
 Auction & Real Estate Group
 Maps Provided By:
surety
 CUSTOMIZED ONLINE MAPPING
 © AgriData, Inc. 2019 www.AgriDataInc.com



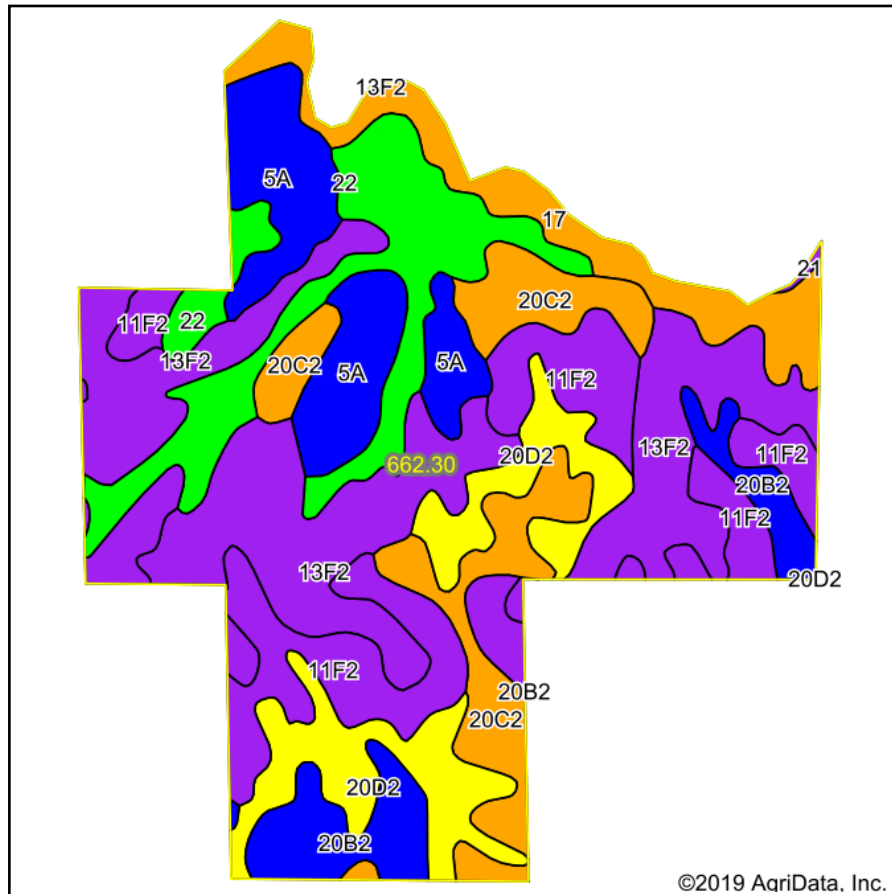
| Classification Code | Type | Acres |
|---------------------|-----------------|-------|
| R4SBC | Riverine | 8.37 |
| R2UBH | Riverine | 4.42 |
| PUBF | Freshwater Pond | 1.07 |
| R5UBH | Riverine | 0.02 |
| Total Acres | | 13.88 |

Data Source: National Wetlands Inventory website. U.S. DoI, Fish and Wildlife Service, Washington, D.C. <http://www.fws.gov/wetlands/>

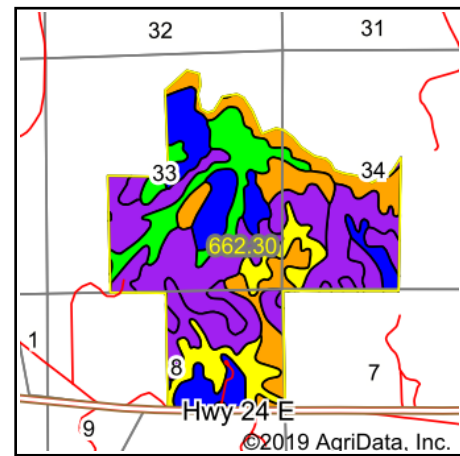
Boundary Lines Are Estimates. Map For Illustration Only.

Field borders provided by Farm Service Agency as of 5/21/2008.

Soils Map



Soils data provided by USDA and NRCS.
Boundary Lines Are Estimates. Map For Illustration Only.



State: **Mississippi**
County: **Wilkinson**
Location: **33-2N-1E**
Township: **District 3**
Acres: **662.3**
Date: **5/15/2019**

LOP
Bonnelle Auctions
Louisiana Outdoor Properties
Auction & Real Estate Group

Maps Provided By:
surety
CUSTOMIZED ONLINE MAPPING
© AgriData, Inc. 2019 www.AgriDataInc.com



Area Symbol: MS157, Soil Area Version: 11

| Code | Soil Description | Acres | Percent of field | Non-Irr Class Legend | Non-Irr Class *c | Bahiagrass | Common bermudagrass | Corn | Cotton lint | Improved bermudagrass | Pasture | Soybeans | Tall fescue | Wheat |
|------------------|---|--------|------------------|----------------------|------------------|------------|---------------------|------|-------------|-----------------------|---------|----------|-------------|-------|
| 13F2 | Lorman silt loam, 15 to 45 percent slopes, eroded | 164.59 | 24.9% | | Vlle | | | | | | | | | |
| 11F2 | Lexington-Smithdale complex, 5 to 40 percent slopes, eroded | 114.44 | 17.3% | | Vle | | | | | | | | | |
| 22 | Riedtown silt loam, rarely flooded | 82.84 | 12.5% | | Ile | | | 9 | 100 | 750 | 12 | 40 | 9 | |
| 20C2 | Providence silt loam, 5 to 8 percent slopes, eroded | 73.91 | 11.2% | | Ille | 8.2 | | 80 | 575 | 8.8 | | 30 | 8 | 37.5 |
| 20D2 | Providence silt loam, 8 to 12 percent slopes, eroded | 69.92 | 10.6% | | IVe | 8 | | 80 | 675 | 8.8 | | 35 | 7.5 | 32.5 |
| 5A | Calloway silt loam, 0 to 2 percent slopes | 69.67 | 10.5% | | Ile | | 6.5 | 90 | 700 | 9 | | 38 | 8.5 | 35 |
| 17 | Nugent sand, frequently flooded | 46.10 | 7.0% | | Ills | | | | | 10 | | | | |
| 20B2 | Providence silt loam, 2 to 5 percent slopes, eroded | 40.11 | 6.1% | | Ile | 8.5 | | 90 | 750 | 9.5 | | 40 | 8.5 | 40 |
| 21 | Quartzipsammments, frequently flooded | 0.72 | 0.1% | | Vw | | | | | | 5 | | | |
| Weighted Average | | | | | | 2.3 | 1.8 | 44.8 | 348.3 | 5.6 | *- | 18.5 | 4.2 | 13.7 |

*c: Using Capabilities Class Dominant Condition Aggregation Method

Soils data provided by USDA and NRCS.